

G:\CAD\126606\Contract\contract_2\Current\Struct_Site Plan and Location of Existing Utilities.dwg

METRIC
 WHOLE NUMBERS INDICATE MILLIMETRES
 DECIMALIZED NUMBERS INDICATE METRES

WARNING
 IF POWER EQUIPMENT OR EXPLOSIVES ARE TO BE USED FOR EXCAVATION ON THIS PROJECT THE CONTRACTOR MUST:

1. NOTIFY THE GAS COMPANY OF THE PROPOSED LOCATION OF EXCAVATION.
2. TAKE PRECAUTION TO AVOID DAMAGE TO GAS COMPANY INSTALLATIONS SEE PROVINCIAL REGULATION 210/72 FOR DETAILS.
3. OBTAIN EXCAVATION PERMITS PRIOR TO CONSTRUCTION.

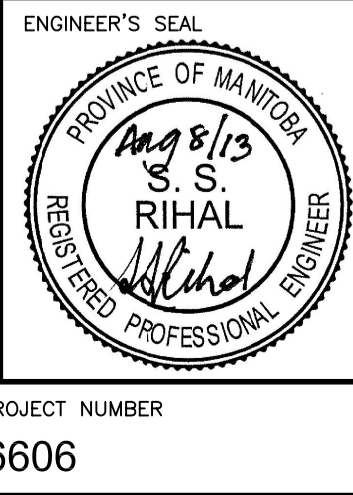
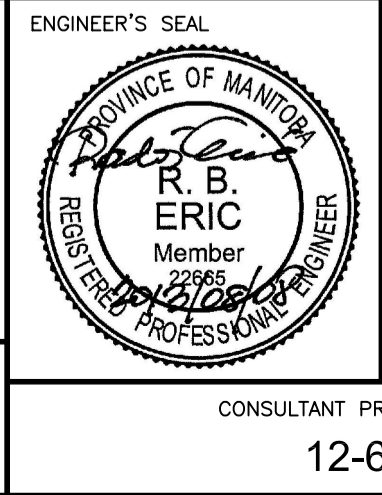
PLAN
1:500



| | |
|--|------|
| UNDERGROUND STRUCTURES | |
| SUPV. U/G STRUCTURES COMMITTEE | DATE |
| NOTE: LOCATION OF UNDERGROUND STRUCTURES AS SHOWN ARE BASED ON THE BEST INFORMATION AVAILABLE BUT NO GUARANTEE IS GIVEN THAT ALL EXISTING UTILITIES ARE SHOWN OR THAT THE GIVEN LOCATIONS ARE EXACT. CONFIRMATION OF EXISTENCE AND EXACT LOCATION OF ALL SERVICES MUST BE OBTAINED FROM THE INDIVIDUAL UTILITIES BEFORE PROCEEDING WITH CONSTRUCTION. | |

| | | | |
|------------|-------------------|----------|-----|
| B.M. ELEV. | | | |
| | | | |
| | | | |
| | | | |
| 0 | ISSUED FOR TENDER | 13/08/08 | MBL |
| NO. | REVISIONS | DATE | BY |

| | |
|-------------|------------|
| DESIGNED BY | RE |
| DRAWN BY | NBG |
| CHECKED BY | SSR |
| APPROVED BY | MBL |
| HOR. SCALE | AS SHOWN |
| VERTICAL | |
| DATE | 2013/08/01 |



THE CITY OF WINNIPEG
PUBLIC WORKS DEPARTMENT

Waverley West Arterial Roads Project (WWARP) Part 3 - Contract 2
 Route 90 to Route 165, Overpass (Kenaston Blvd.) and Associated Works

CITY DRAWING NUMBER: B242-13-03
 SHEET 03 OF 128
 CONSULTANT DRAWING NUMBER

CONSULTANT PROJECT NUMBER: 12-6606

SITE PLAN AND LOCATION OF EXISTING UTILITIES