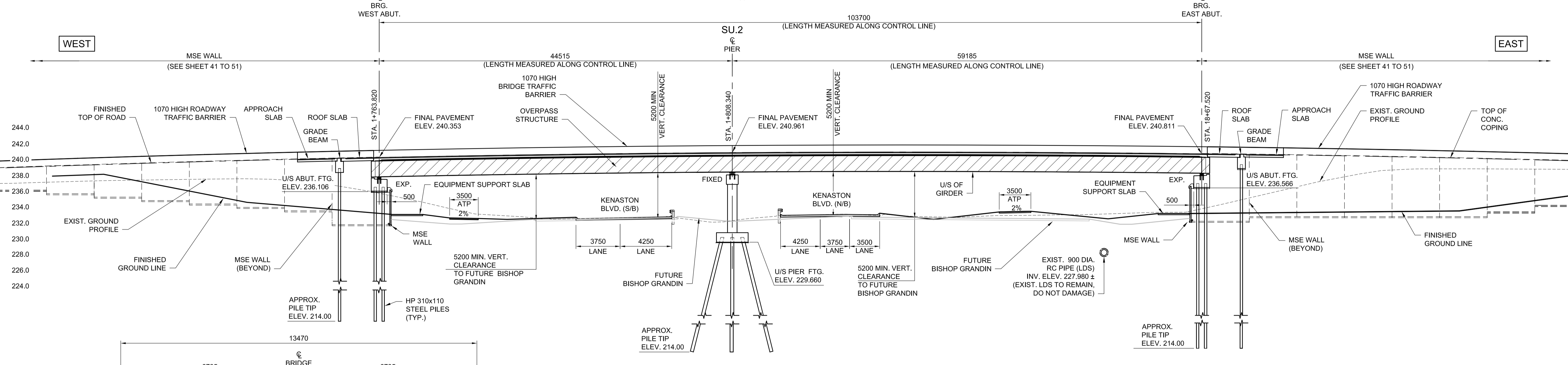
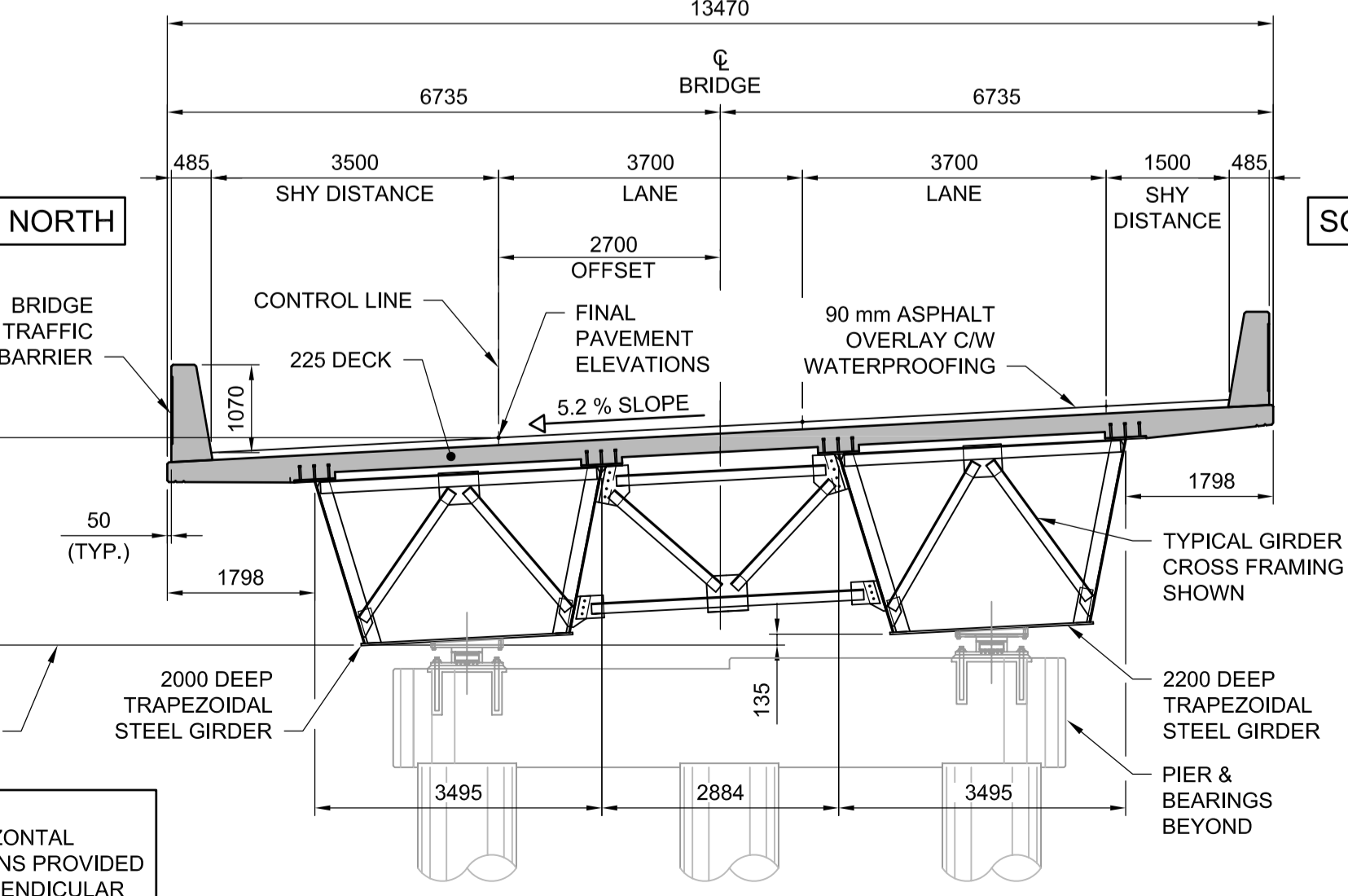


PLAN
1:250



ELEVATION / SECTION ALONG CONTROL LINE
1:250



SECTION
1:75
TYPICAL

WORKING POINT COORDINATES		
LOCAL COORDINATE SYSTEM (GROUND DISTANCES)		
W.P. No.	NORTHING	EASTING
W.P. 1	5519015.783	630228.096
W.P. 2	5519008.875	630272.058
W.P. 3	5519005.671	630331.123

APEGM
Certificate of Authorization
Dillon Consulting Limited (MB)
No. 1789 Date: 2013/08/01

UNDERGROUND STRUCTURES	B.M. ELEV.	DESIGNED BY	RE
SUPV. U/G STRUCTURES COMMITTEE	DATE	DRAWN BY	NBG / CGC
		CHECKED BY	SSR
		APPROVED BY	MBL
		HOR. SCALE	AS SHOWN
		VERTICAL	AS SHOWN
0	ISSUED FOR TENDER	13/08/08	MBL
NO.	REVISIONS	DATE	BY
		2013/08/01	

RELEASED FOR CONSTRUCTION	DATE

ENGINEER'S SEAL

THE CITY OF WINNIPEG
PUBLIC WORKS DEPARTMENT

WAVERLEY WEST ARTERIAL ROADS PROJECT
(WWARP) PART 3 - CONTRACT 2
ROUTE 90 TO ROUTE 165, OVERPASS (KENASTON BLVD.)
AND ASSOCIATED WORKS

CITY DRAWING NUMBER: B242-13-02
SHEET 02 OF 128
CONSULTANT DRAWING NUMBER

GENERAL ARRANGEMENT

CONSULTANT PROJECT NUMBER: 12-6606

NOTE:
ALL HORIZONTAL DIMENSIONS PROVIDED ARE PERPENDICULAR MEASUREMENTS.

NOTE:
LOCATION OF UNDERGROUND STRUCTURES AS SHOWN ARE BASED ON THE BEST INFORMATION AVAILABLE BUT NO GUARANTEE IS GIVEN THAT ALL EXISTING UTILITIES ARE SHOWN OR THAT THE GIVEN LOCATIONS ARE EXACT. CONFIRMATION OF EXISTENCE AND EXACT LOCATION OF ALL SERVICES MUST BE OBTAINED FROM THE INDIVIDUAL UTILITIES BEFORE PROCEEDING WITH CONSTRUCTION.

G:\CAD\126606\Contract_2\Current\Struct_Bridge_General_Arrangement.dwg