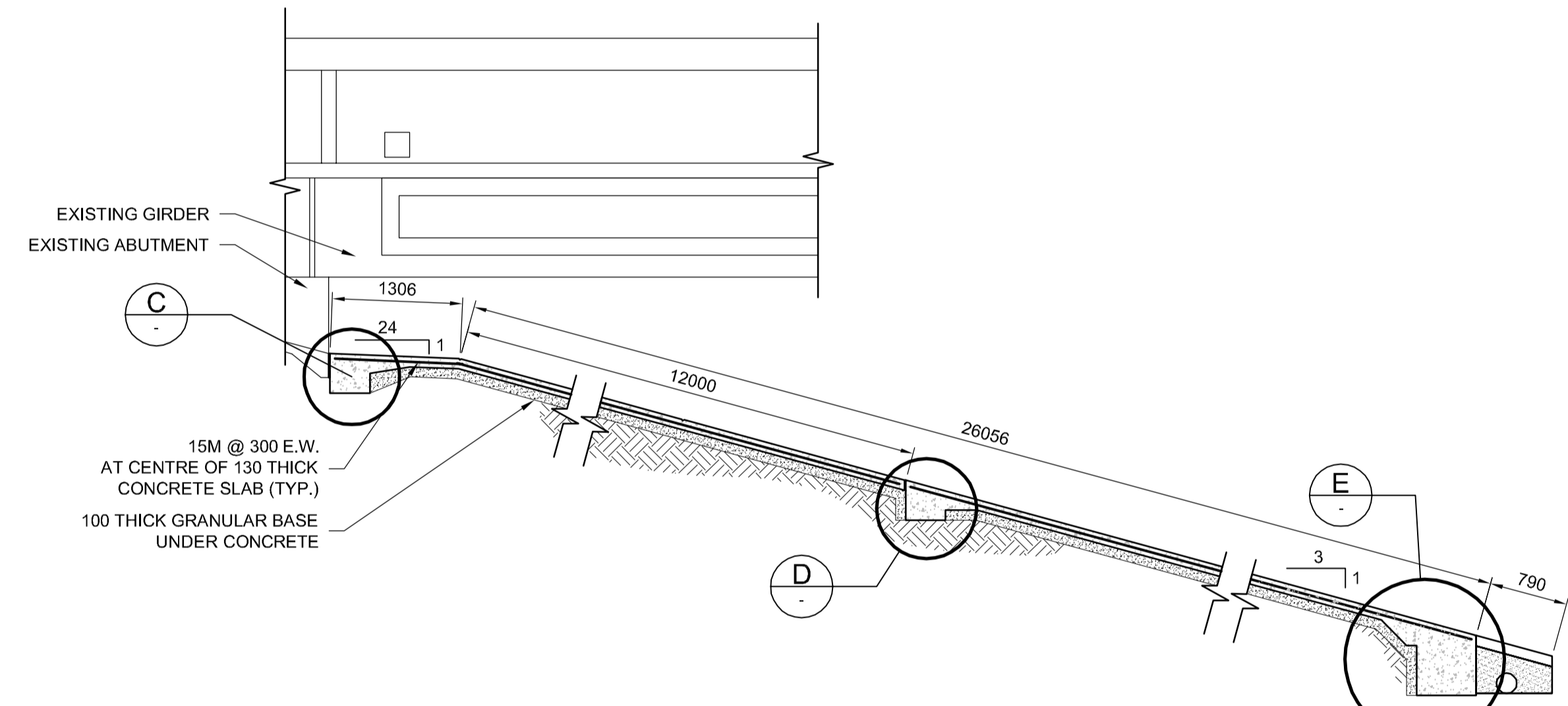
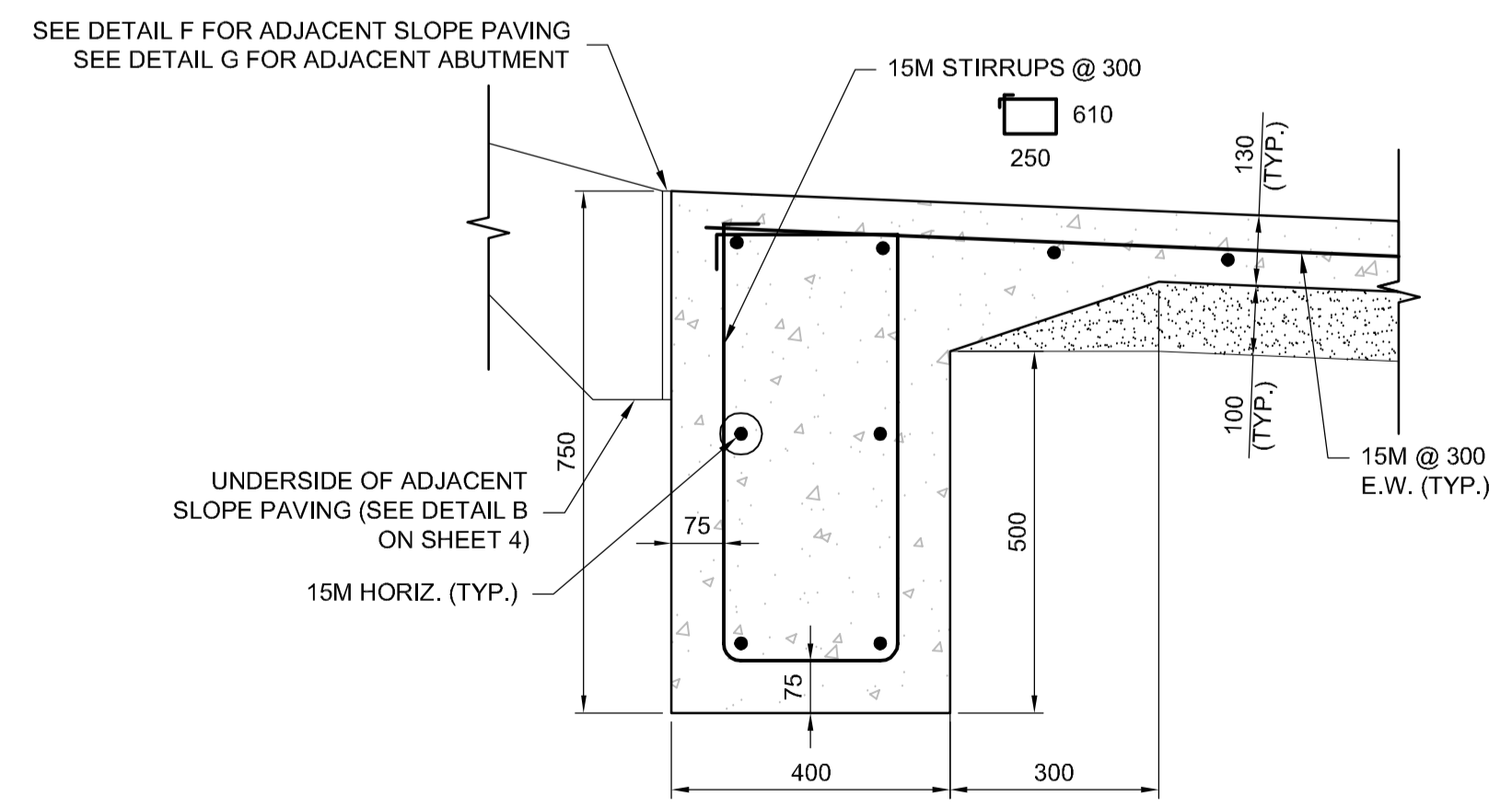


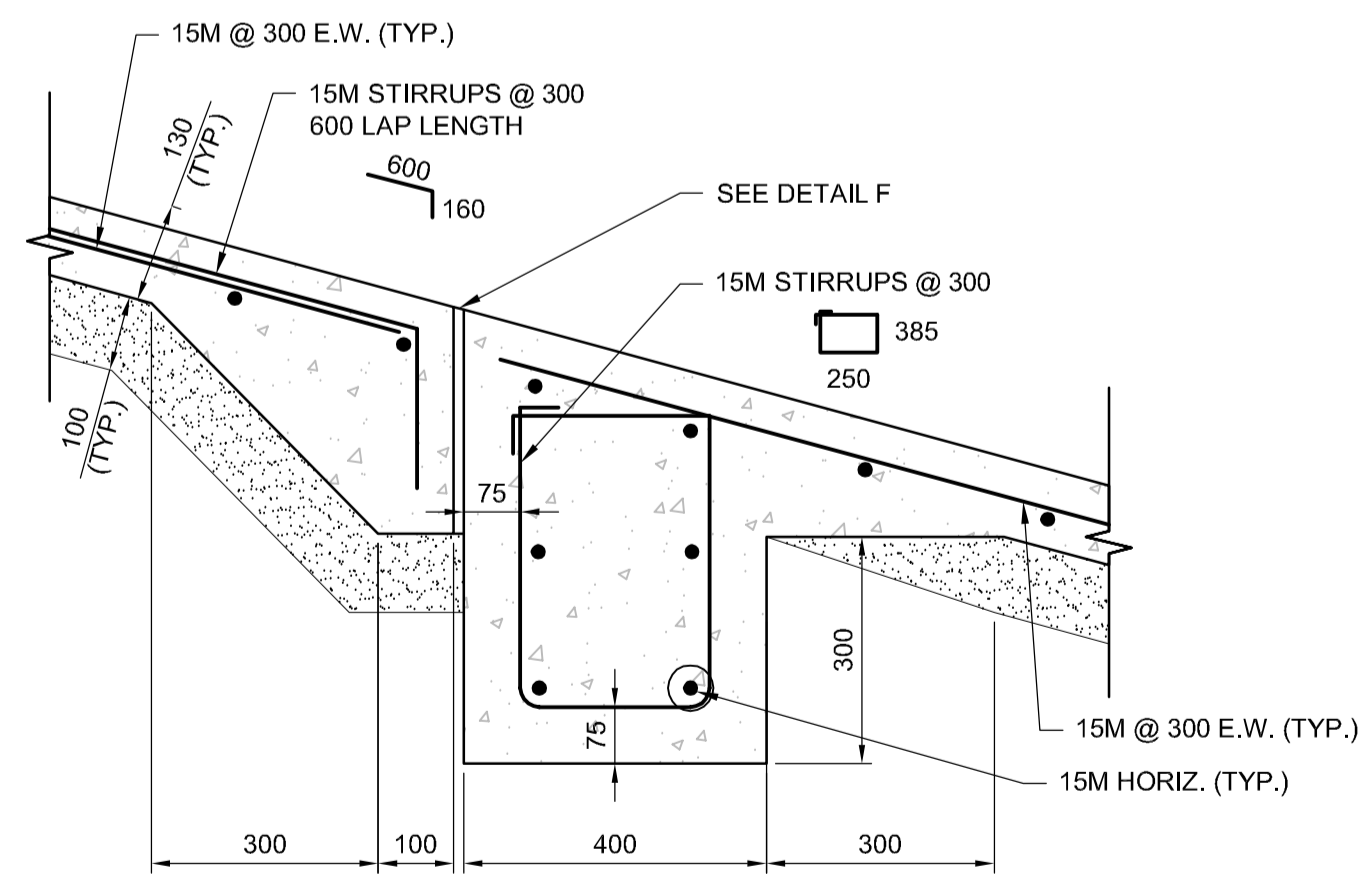
2 SECTION - EXISTING CONCRETE SLOPE PROTECTION
1:50 SOUTH OF ABUTMENT FACE LOOKING EAST



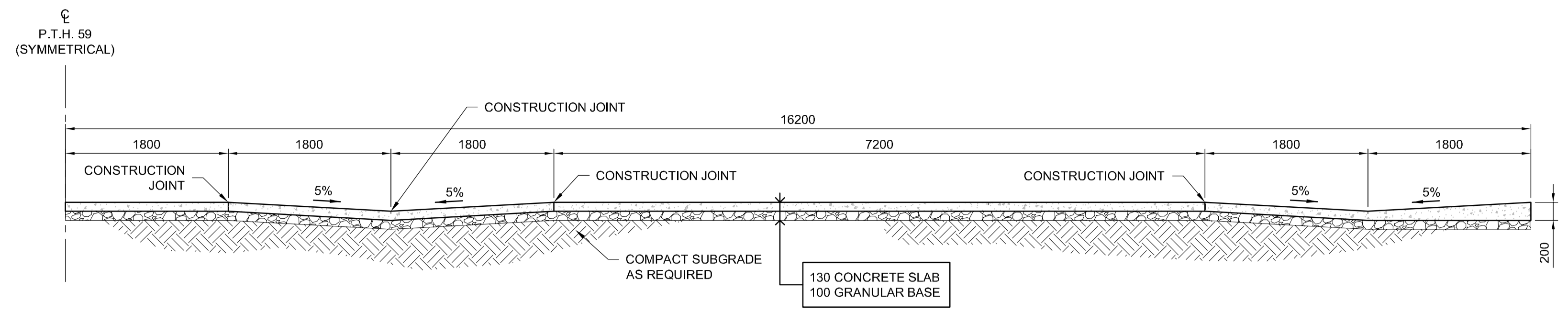
2 SECTION - PROPOSED CONCRETE SLOPE PROTECTION
1:50 SOUTH OF ABUTMENT FACE LOOKING EAST



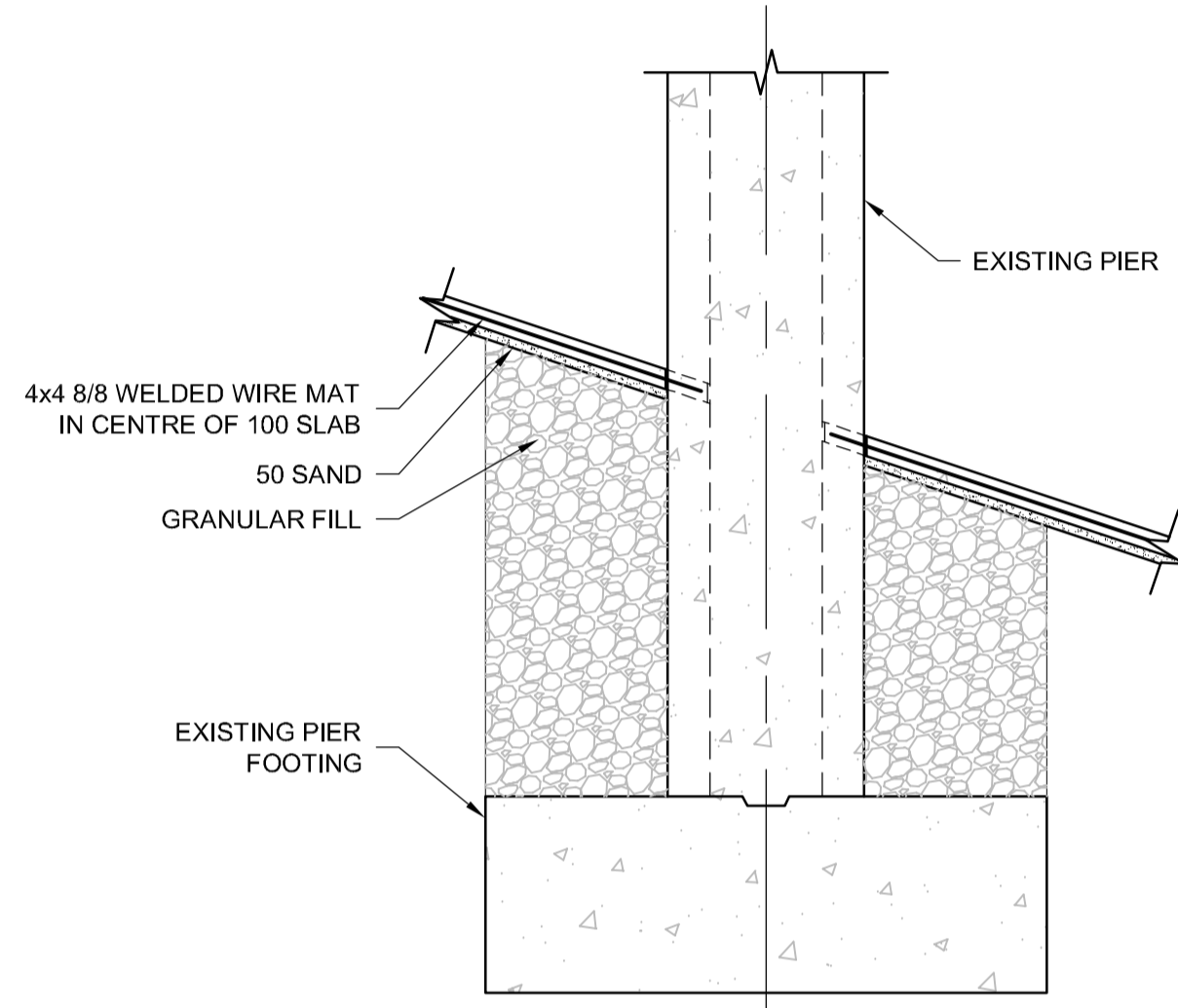
C DETAIL
1:10



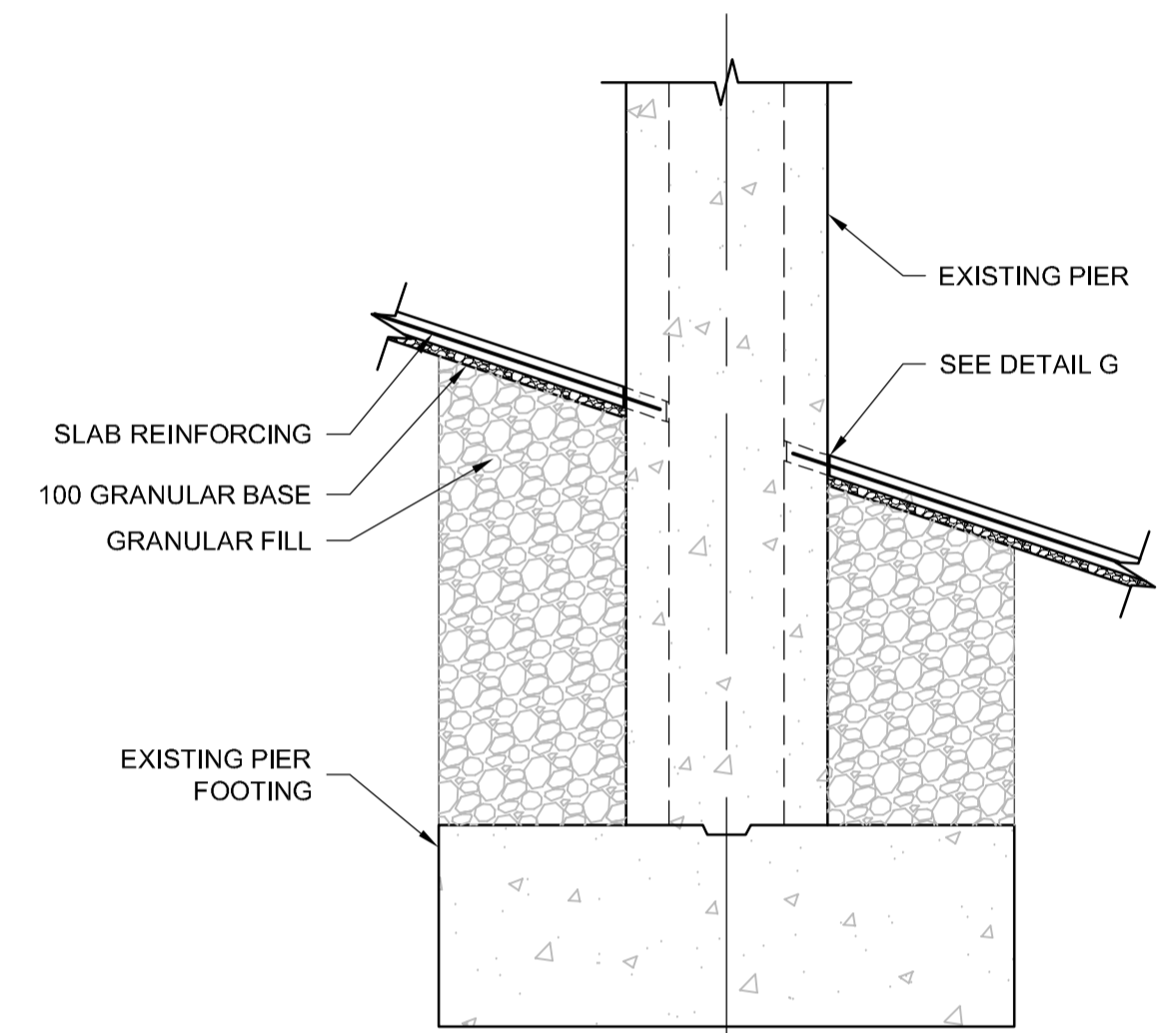
D DETAIL
1:10



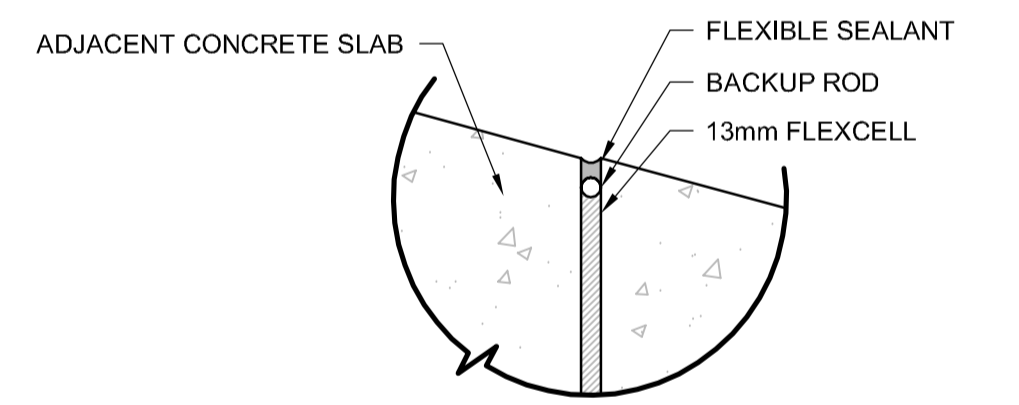
4 SECTION - PROPOSED CONCRETE SLOPE PAVING
1:40 LOOKING NORTH (REINFORCING NOT SHOWN FOR CLARITY)



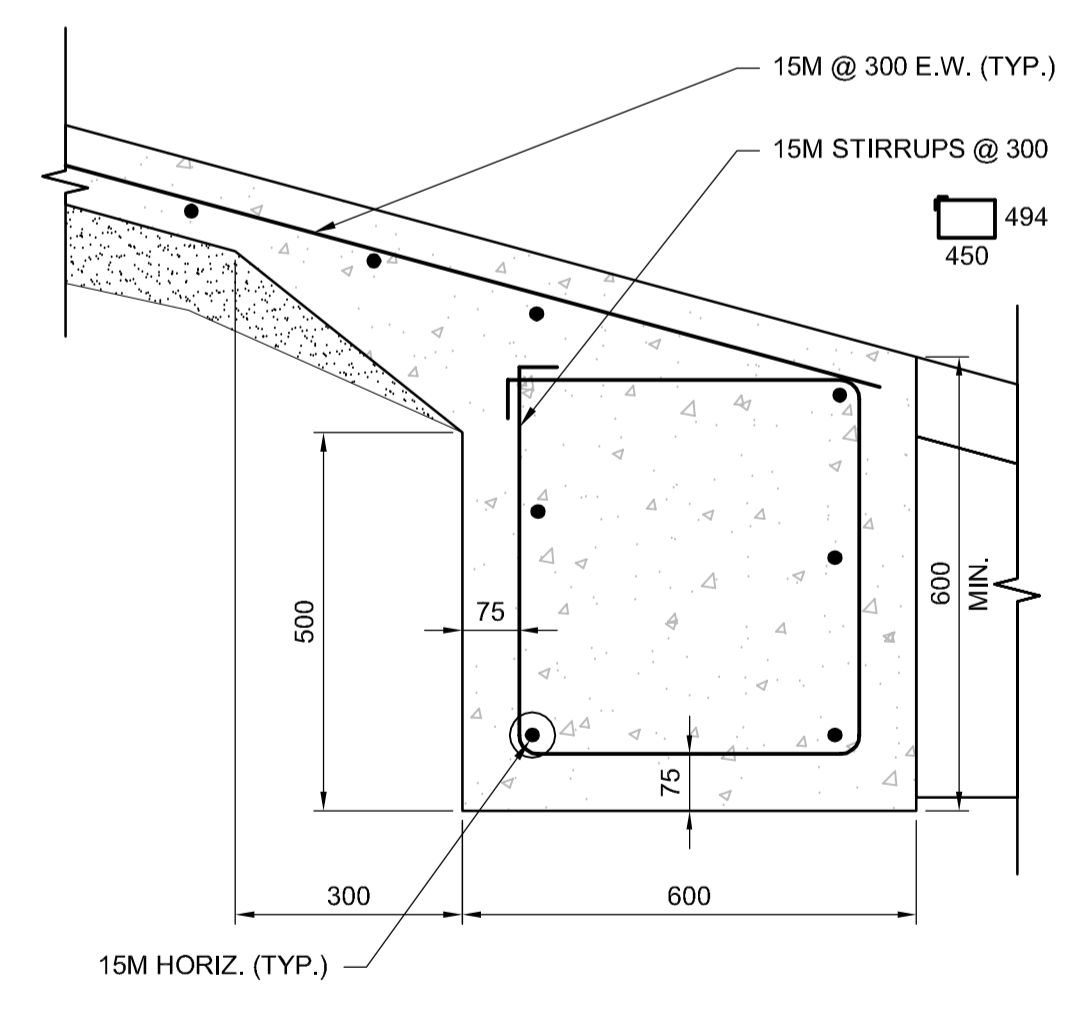
3 SECTION - EXISTING PIER ELEVATION (TYP.)
1:40



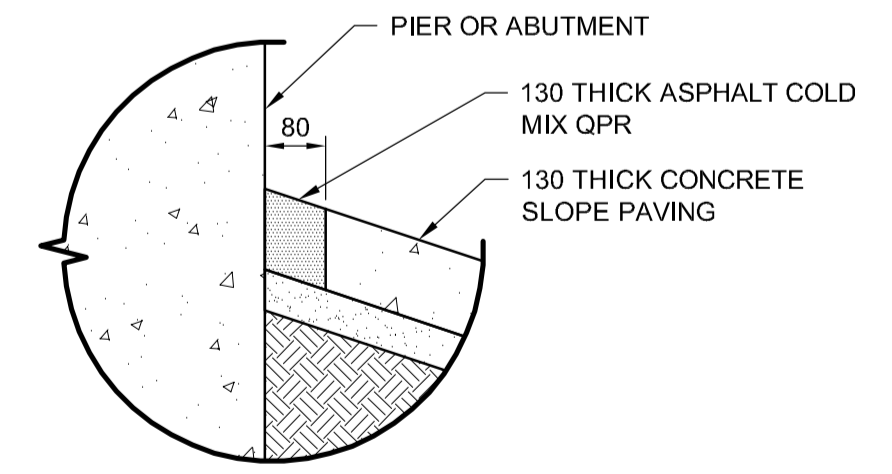
3 SECTION - PROPOSED PIER ELEVATION (TYP.)
1:40



F DETAIL
1:5



E DETAIL
1:10



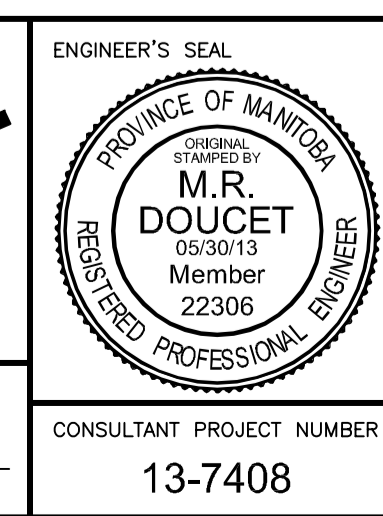
G DETAIL
1:10 (ALL PIER AND ABUTMENT LOCATIONS) METRIC

WHOLE NUMBERS INDICATE MILLIMETRES
DECIMALIZED NUMBERS INDICATE METRES

G:\CAD\137408 - City of Winnipeg - Br. Maint\09-Structural\01-Contract\137408-09-CONCORDIA-CON.dwg



B.M. ELEV.	DESIGNED BY	JLD
	DRAWN BY	JLD
	CHECKED BY	MRD
	APPROVED BY	-
	HOR. SCALE	-
	VERTICAL	-
0 ISSUED FOR TENDER	05/30/13	MRD
NO. REVISIONS	DATE	BY
	05/30/13	



THE CITY OF WINNIPEG
PUBLIC WORKS DEPARTMENT

2013 BRIDGE MAINTENANCE PROGRAM
ROUTE 20 KEEWATIN TWIN OVERPASS

CITY DRAWING NUMBER: B123-13-02
SHEET 05 OF 05
CONSULTANT DRAWING NUMBER

NORTH SLOPE PAVING DETAILS

CONSULTANT PROJECT NUMBER: 13-7408