

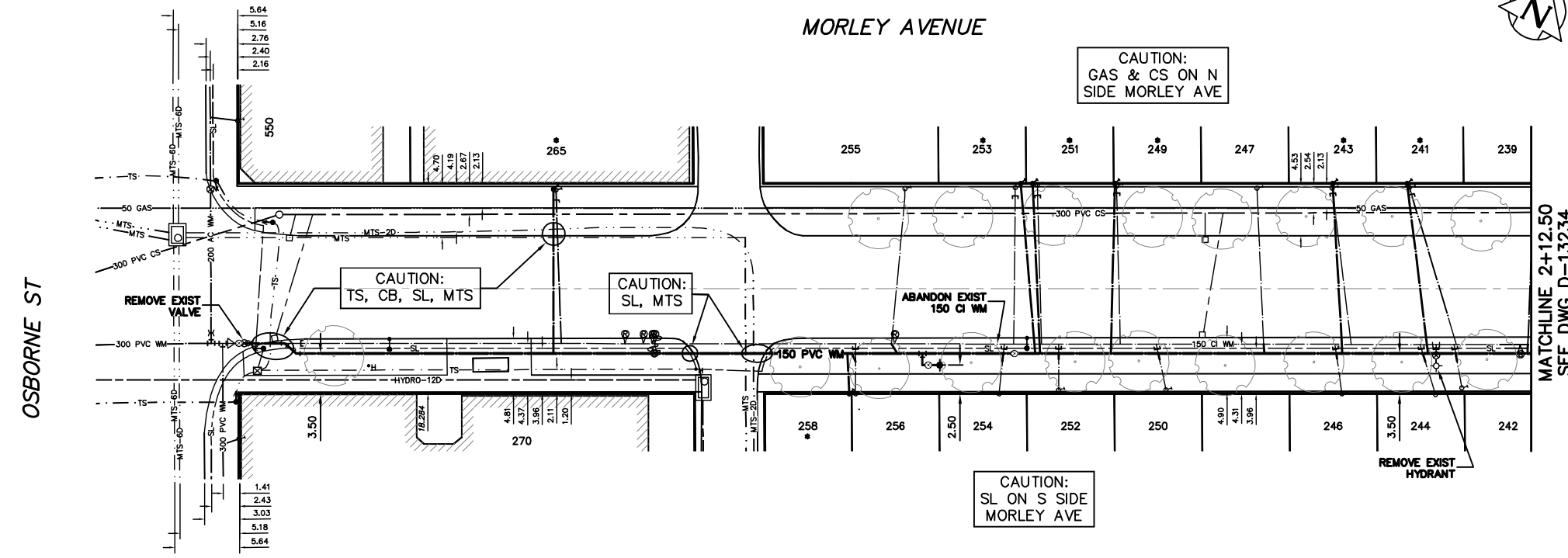
0+97.68 EXIST 300X300X200 TEE
 0+98.93 EXIST 300X300X200 TEE
 0+99.53 EXIST 300X300X200 TEE
 1+00.00 OSBORNE ST INSTALL 150 VALVE AND
 CONNECT TO EXIST 150 PVC WM
 1+00.46 REMOVE EXIST VALVE
 1+01.03 REMOVE EXIST COUPLING
 1+04.00 INSTALL 150-45° BEND
 1+05.00 INSTALL 150-45° BEND

NOTE: CHAINAGES SHOWN ARE ALONG S. R. OF MORLEY AVE.

WATER SERVICE INFORMATION

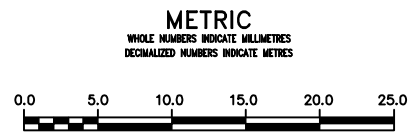
ADDRESS	SIZE (mm) MATERIAL (STREET)	SIZE (mm) MATERIAL (PROP.)	SHORT & LONG MEASUREMENT	CORP. LOCATION	REMARKS
238 MORLEY AVE RESIDENTIAL	20 COPPER	20 COPPER	1.30 WEL HSE 112.75 EEL OSBORNE	0.5 W OF S/C	RECONNECT SERVICE
241 MORLEY AVE RESIDENTIAL	16 LEAD	20 COPPER	2.42 EWL HSE 102.02 EEL OSBORNE	4.1 E OF S/C	RENEW TO 1/2 W/20 COPPER
242 MORLEY AVE RESIDENTIAL	20 COPPER	20 COPPER	0.98 WEL HSE 106.53 EEL OSBORNE	0.5 W OF S/C	RECONNECT SERVICE
243 MORLEY AVE RESIDENTIAL	16 LEAD	12 COPPER	3.63 WEL HSE 95.24 EEL OSBORNE	1.7 E OF S/C	RENEW TO 1/2 W/20 COPPER
244 MORLEY AVE RESIDENTIAL	20 COPPER	20 COPPER	1.98 WEL HSE 104.18 EEL OSBORNE	1.4 W OF S/C	RECONNECT SERVICE
246 MORLEY AVE RESIDENTIAL	20 COPPER	12 COPPER	2.95 WEL HSE 96.02 EEL OSBORNE	0.7 W OF S/C	RECONNECT SERVICE
247 MORLEY AVE RESIDENTIAL	20 COPPER	12 COPPER	2.52 WEL HSE 88.68 EEL OSBORNE	0.5 E OF S/C	RECONNECT SERVICE
249 MORLEY AVE RESIDENTIAL	-	-	0.91 WEL HSE 76.64 EEL OSBORNE	-	RENEW TO 1/2 W/20 COPPER
250 MORLEY AVE RESIDENTIAL	20 COPPER	12 COPPER	2.98 WEL HSE 80.73 EEL OSBORNE	0.8 W OF S/C	RECONNECT SERVICE
251 MORLEY AVE RESIDENTIAL	-	-	0.54 WEL HSE 69.72 EEL OSBORNE	-	RENEW TO 1/2 W/20 COPPER
252 MORLEY AVE RESIDENTIAL	20 COPPER	20 COPPER	2.27 WEL HSE 71.37 EEL OSBORNE	OPP S/C	RECONNECT SERVICE
253 MORLEY AVE RESIDENTIAL	-	-	0.16 EEL HSE 67.39 EEL OSBORNE	-	RENEW TO 1/2 W/20 COPPER
254 MORLEY AVE RESIDENTIAL	20 COPPER	12 COPPER	1.33 WEL HSE 66.08 EEL OSBORNE	0.5 E OF S/C	RECONNECT SERVICE
255 MORLEY AVE RESIDENTIAL	20 COPPER	12 COPPER	2.42 WEL HSE 57.97 EEL OSBORNE	1.1 W OF S/C	RECONNECT SERVICE
256 MORLEY AVE RESIDENTIAL	20 COPPER	12 COPPER	0.30 WEL HSE 53.58 EEL OSBORNE	OPP S/C	SEPERATE DBL SERV. W/#258 RECONNECT SERVICE
258 MORLEY AVE RESIDENTIAL	20 COPPER	12 COPPER	0.70 EEL HSE 53.58 EEL OSBORNE	OPP S/C	SEPERATE DBL SERV. W/#258 RECONNECT SERVICE
265 MORLEY AVE RESIDENTIAL	25 LEAD	25 LEAD	11.63 WEL BLDG 27.65 EEL OSBORNE	0.5 E OF S/C	RENEW TO 1/2 W/20 COPPER
270 MORLEY AVE RESIDENTIAL	25 COPPER	25 COPPER	3.61 SNL BLDG 3.88 SNL MORLEY	0.4 S OF S/C	SERV. OFF OSBORNE
350 OSBORNE ST RESIDENTIAL	16 LEAD	12 LEAD	5.41 SNL BLDG 5.45 NNL MORLEY	0.3 N OF S/C	SERV. OFF OSBORNE

* SERVICES TO BE RENEWED TO 1/2. ALL OTHERS TO BE RECONNECTED



OSBORNE ST

MATCHLINE 2+12.50
SEE DWG D-13234



WARNING
 IF POWER EQUIPMENT OR EXPLOSIVES ARE TO BE USED FOR EXCAVATION ON THIS PROJECT THE CONTRACTOR MUST:
 1) NOTIFY THE GAS COMPANY OF THE PROPOSED LOCATION OF EXCAVATION.
 2) TAKE PRECAUTION TO AVOID DAMAGE TO GAS COMPANY INSTALLATIONS.
 SEE PROVINCIAL REGULATION 210/72 FOR DETAILS

LOCATION APPROVED UNDERGROUND STRUCTURES
 SUPV. U/G STRUCTURES COMMITTEE DATE
 NOTE:
 LOCATION OF UNDERGROUND STRUCTURES AS SHOWN ARE BASED ON THE BEST INFORMATION AVAILABLE BUT NO GUARANTEE IS GIVEN THAT ALL EXISTING UTILITIES ARE SHOWN OR THAT THE GIVEN LOCATIONS ARE EXACT. CONFIRMATION OF EXISTENCE AND EXACT LOCATION OF ALL SERVICES MUST BE OBTAINED FROM THE INDIVIDUAL UTILITIES BEFORE PROCEEDING WITH CONSTRUCTION.

B.M. ELEV.			
CONSTRUCTION COMPLETION DATE: YYYY MM DD			
DESIGNED BY	TS		
CHECKED BY	SC		
DRAWN BY	CJH		
APPROVED BY	KZ		
SCALE:			
HORIZONTAL	1:250		
VERTICAL	1:50		
RELEASED FOR CONSTRUCTION			
NO.	REVISIONS	DATE	BY

DATE	2013 05 22
PLOT DATE:	2013 05 22

ENGINEER'S SEAL
ORIGINAL SIGNED BY
 S.R.J.
 COURNOYER
 13.05.22
 CONSULTANT DRAWING NUMBER

THE CITY OF WINNIPEG
 WATER AND WASTE DEPARTMENT
 ENGINEERING DIVISION
 2013 WATER RENEWALS
MORLEY AVENUE
 OSBORNE STREET TO
 112.5 E OF OSBORNE STREET

SHEET 3 OF 12
 CITY DRAWING NUMBER
D-13233