

- REFERENCE NOTES**
- PAVEMENT DIMENSIONS ARE TO BACK OF CURB
 - BASELINE IS CENTRE LINE RIGHT-OF-WAY
 - PROPERTY LINES OBTAINED FROM CITY OF WINNIPEG L.B.I.S., AND NO SCALE FACTOR WAS APPLIED
 - REFER TO AECOM FIELD BOOK NO. 4791

- CONSTRUCTION NOTES**
- PLACE NEW ASPHALTIC PAVEMENT TYPE 1A (AVERAGE THICKNESS 75mm)
 - REMOVE EXISTING CONCRETE PAVEMENT AND CONSTRUCT NEW 150mm REINFORCED CONCRETE PAVEMENT c/w 65mm ASPHALT OVERLAY
 - REMOVE EXISTING CONCRETE PAVEMENT AND CONSTRUCT NEW 150mm REINFORCED CONCRETE PAVEMENT
 - REMOVE EXISTING CATCH BASIN
 - INSTALL NEW CATCHBASIN (SD-024) AND CONNECT TO EXISTING MANHOLE
 - ADJUST EXISTING MANHOLE/CATCH BASIN TO GRADE
 - CONSTRUCT NEW BARRIER CURB (150mm REVEAL HT. SEPARATE)
 - CONSTRUCT NEW CURB RAMP (10mm REVEAL HT. MONOLITHIC)
 - PLANE EXISTING 120mm MOUNTABLE CURB AND PLACE NEW BARRIER CURB (150mm REVEAL HT. DOWELLED)
 - ADJUST EXISTING WATER VALVE TO GRADE
 - RENEW EXISTING 100mm CONCRETE SIDEWALK
 - ADJUST EXISTING CURB STOP



METRIC
WHOLE NUMBERS INDICATE MILLIMETRES
DECIMALIZED NUMBERS INDICATE METRES

150 mm W.M.		300mm L.D.S.		250mm W.W.S.		HYDRO		C PROFILE	
○	WATERMAIN	○	LAND DRAINAGE SEWER	○	WASTEWATER SEWER	○	HYDRO M.T.S.	—	NORTH/WEST GUTTER
○	HYDRANT	○	VALVE	○	MANHOLE	○	CONCRETE	—	SOUTH/EAST GUTTER
○	LAND DRAINAGE SEWER	○	WASTEWATER SEWER	○	CATCH BASIN	○	ASPHALT	—	N/W PROPERTY LINE
○	WASTEWATER SEWER	○	MANHOLE	○	CURB INLET	○	PROPERTY LINE	○	S/E PROPERTY LINE
○	CATCH BASIN	○	JUNCTIONS	○	CULVERT	○	SURVEY BAR	○	
○	GAS	○	EXISTING	○	PROPOSED	○	ELEVATION (35.750)	○	
○	LEGEND - PLAN	○	PROPOSED	○	EXISTING	○	TREE	○	
○	PROPOSED	○	EXISTING	○	LEGEND - PLAN	○	SIDEWALK RAMP	○	
○	PROPOSED	○	EXISTING	○	LEGEND - PROFILE	○	CONCRETE SIDEWALK	○	
○	PROPOSED	○	EXISTING	○	PROPOSED	○	FENCE	○	
○	PROPOSED	○	EXISTING	○	PROPOSED	○	LEGEND - PROFILE	○	
○	PROPOSED	○	EXISTING	○	PROPOSED	○	PROPOSED	○	

LOCATION APPROVED UNDERGROUND STRUCTURES

SUPV. U/G STRUCTURES COMMITTEE DATE

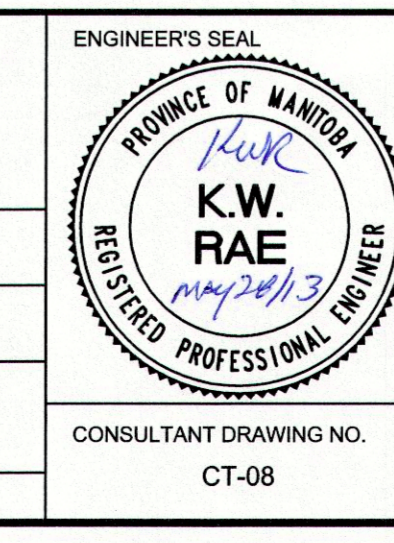
NOTE:
LOCATION OF UNDERGROUND STRUCTURES AS SHOWN ARE BASED ON THE BEST INFORMATION AVAILABLE. BUT NO GUARANTEE IS GIVEN THAT ALL EXISTING UTILITIES ARE SHOWN OR THAT THE GIVEN LOCATIONS ARE EXACT. CONFIRMATION OF EXISTENCE AND EXACT LOCATION OF ALL SERVICES MUST BE OBTAINED FROM THE INDIVIDUAL UTILITIES BEFORE PROCEEDING WITH CONSTRUCTION.

NO.	REVISIONS	DATE	BY
0	ISSUED FOR TENDER	05/30/2013	BC
A	ISSUED FOR REVIEW	05/24/2013	BC

B.M. 83R559 N.W. Cor. Buchanan Blvd. & Fairlane Ave., Tilt on ELEV. 239.659 top of 0.65m dia. x 2.4m iron pipe on W.L.

AECOM

DESIGNED BY	BC	CHECKED BY	KWR
DRAWN BY	SS	APPROVED BY	
HOR. SCALE:	1:250	RELEASED FOR CONSTRUCTION BY:	
VERTICAL:	1:10	DATE	2013/05/24



THE CITY OF WINNIPEG
PUBLIC WORKS DEPARTMENT
ENGINEERING DIVISION

2013 LOCAL STREET RENEWAL PROGRAM

FAIRLANE AVE. - BUCHANAN BOULEVARD TO GOSWELL ROAD
PAVEMENT REHABILITATION
FAIRLANE AVE. - STATION 0+295 TO STATION 0+415

CITY DRAWING NUMBER
SHEET 8 OF 16

CONSULTANT DRAWING NO. CT-08