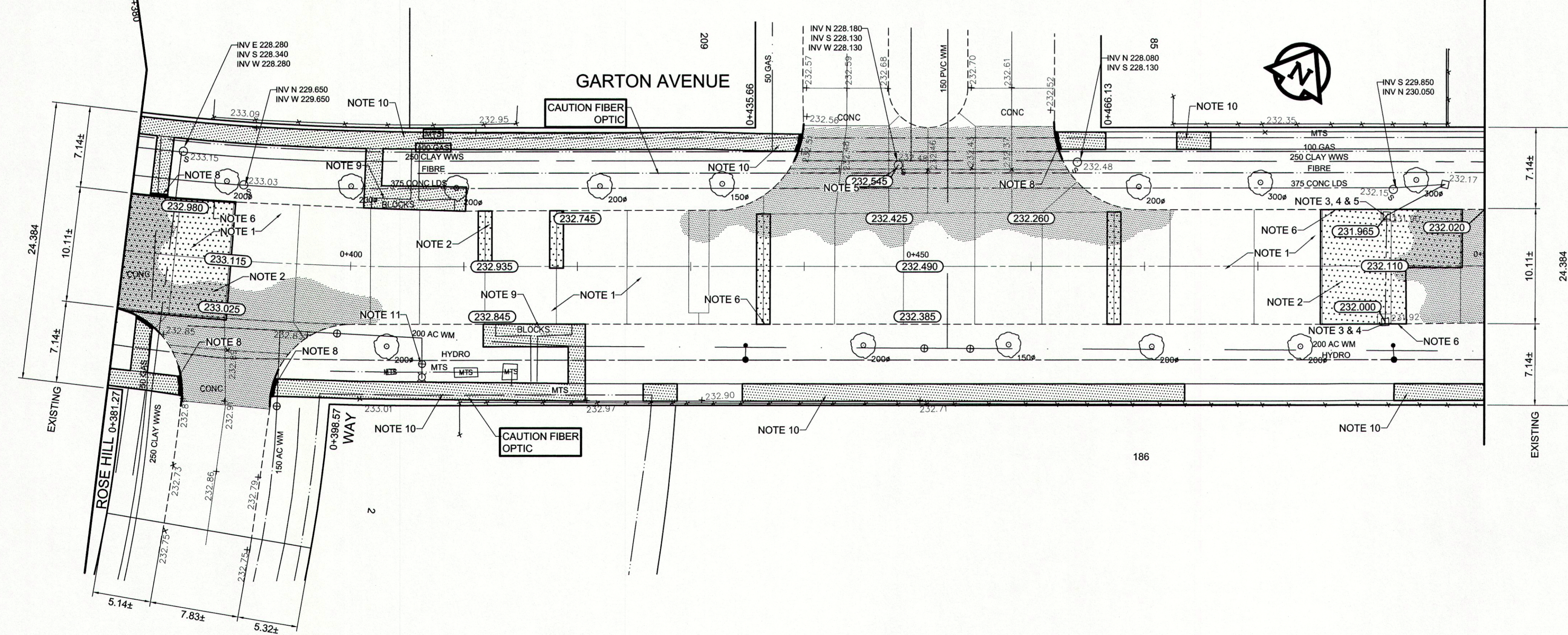


REFERENCE NOTES

- A. PAVEMENT DIMENSIONS ARE TO BACK OF CURB
- B. BASELINE IS CENTRE LINE RIGHT-OF-WAY
- C. PROPERTY LINES OBTAINED FROM CITY OF WINNIPEG L.B.I.S., AND NO SCALE FACTOR WAS APPLIED
- D. REFER TO AECOM FIELD BOOK NO. 4798

CONSTRUCTION NOTES

1. PLACE NEW ASPHALTIC PAVEMENT TYPE 1A (AVERAGE THICKNESS 85mm)
2. REMOVE EXISTING CONCRETE PAVEMENT AND CONSTRUCT NEW 200mm REINFORCED CONCRETE PAVEMENT c/w 85mm ASPHALT OVERLAY
3. REMOVE EXISTING FRAME AND COVER AND INSTALL NEW FRAME AND COVER
4. ADJUST EXISTING MANHOLE/CATCH BASIN TO GRADE
5. INSTALL NEW CAST IRON RISER RING
6. CONSTRUCT NEW BARRIER CURB (150mm REVEAL HT. SEPARATE)
7. CONSTRUCT NEW MODIFIED BARRIER CURB (150mm REVEAL HT. DOWELLED)
8. CONSTRUCT NEW RAMP CURB (10mm REVEAL HT. MONOLITHIC)
9. REMOVE EXISTING PATIO BLOCK BUS PAD AND CONSTRUCT NEW 100mm CONCRETE PUS PAD
10. RENEW EXISTING 100mm CONCRETE SIDEWALK
11. ADJUST EXISTING WATER VALVE TO GRADE
12. ADJUST EXISTING CURB STOP
13. REMOVE AND REINSTALL EXISTING PAVERS
14. REMOVE AND REINSTALL EXISTING PATIO BLOCKS



METRIC
WHOLE NUMBERS INDICATE MILLIMETRES
DECIMALIZED NUMBERS INDICATE METRES

EXISTING	LEGEND - PLAN	PROPOSED	EXISTING	LEGEND - PLAN	PROPOSED	EXISTING	LEGEND - PROFILE	PROPOSED
	WATERMAIN			HYDRO				
	HYDRANT			M.T.S.				
	VALVE			CONCRETE				
	LAND DRAINAGE SEWER			ASPHALT				
	WASTEWATER SEWER			PROPERTY LINE				
	MANHOLE			SURVEY BAR				
	CATCH BASIN			TREE				
	CURB INLET			CONCRETE SIDEWALK				
	JUNCTIONS			GAS				
	CULVERT							

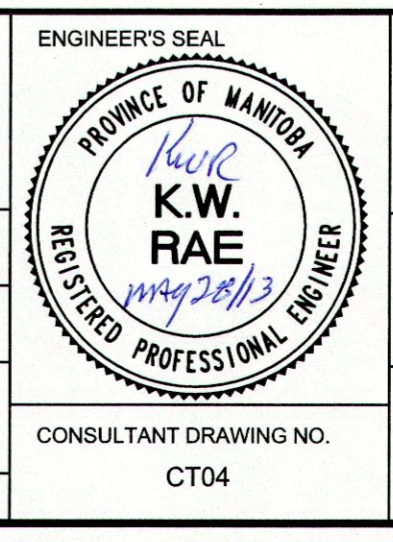
LOCATION APPROVED UNDERGROUND STRUCTURES

SUPV. U/G STRUCTURES COMMITTEE DATE

NOTE:
LOCATION OF UNDERGROUND STRUCTURES AS SHOWN ARE BASED ON THE BEST INFORMATION AVAILABLE. BUT NO GUARANTEE IS GIVEN THAT ALL EXISTING UTILITIES ARE SHOWN OR THAT THE GIVEN LOCATIONS ARE EXACT. CONFIRMATION OF EXISTENCE AND EXACT LOCATION OF ALL SERVICES MUST BE OBTAINED FROM THE INDIVIDUAL UTILITIES BEFORE PROCEEDING WITH CONSTRUCTION.

B.M. 83R676	S.E. Cor. Garton Ave. & Inkster Garden Dr. Tbt. on top of 0.05m dia. x 2.4m iron pipe, 2.3m W. of E.L. of Garton Ave. & 8.1m N. of S.L. of Inkster Garden Dr.	ELEV. 232.589
NO.	REVISIONS	DATE BY
0	ISSUED FOR TENDER	05/30/2013 BC
A	ISSUED FOR REVIEW	05/17/2013 BC

AECOM	
DESIGNED BY: BC	CHECKED BY: KWR
DRAWN BY: SS/RT	APPROVED BY:
HOR. SCALE: 1:250	RELEASED FOR CONSTRUCTION BY: 05/08/2013
VERTICAL: 1:10	DATE: 2013/05/01



THE CITY OF WINNIPEG
PUBLIC WORKS DEPARTMENT
ENGINEERING DIVISION

2013 LOCAL STREET RENEWAL PROGRAM

GARTON AVE. - KING EDWARD ST. TO INKSTER GARDEN DR. PAVEMENT REHABILITATION STATION 0+380 TO STATION 0+500

CITY DRAWING NUMBER: SHEET 4 OF 16