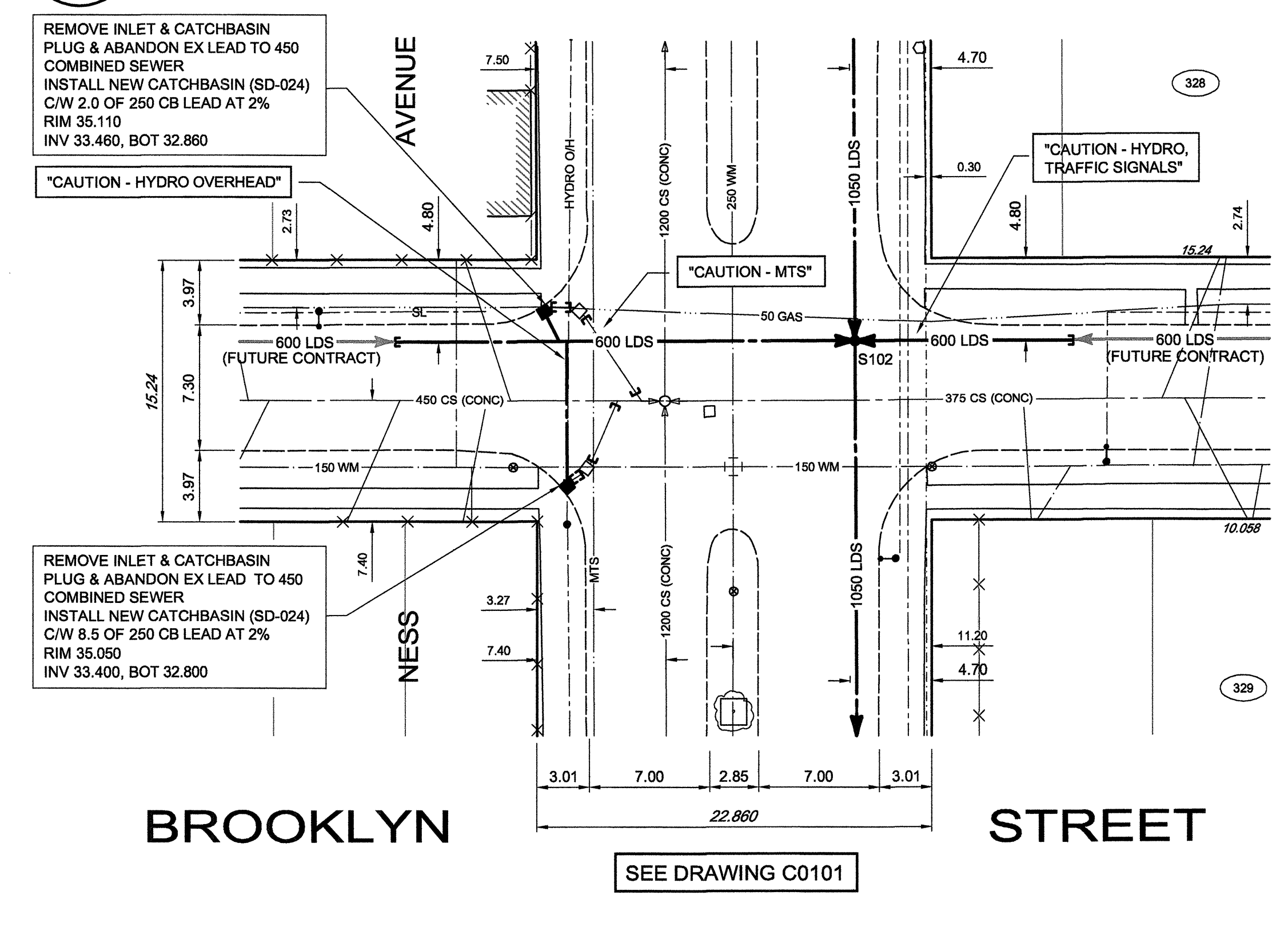
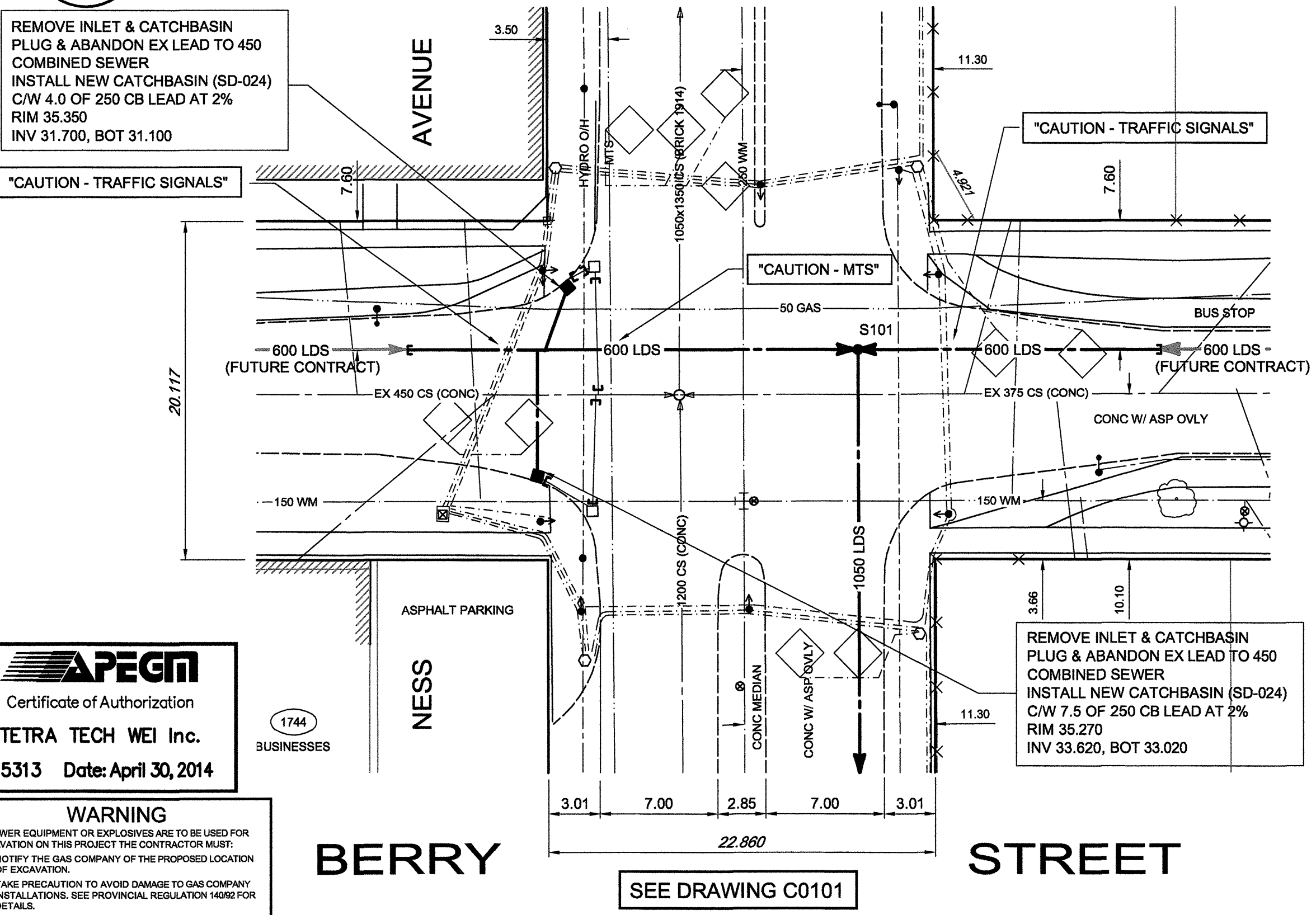


**PRELIMINARY
DRAWING**

NOT TO BE
USED FOR
CONSTRUCTION



CONSTRUCTION NOTES:

1. LOCATION OF ALL SEWER AND WATER LINES TO BE CONFIRMED IN THE FIELD.
2. SEWER AND WATER SERVICES SHOWN ON DRAWINGS ARE APPROXIMATE ONLY.
3. INSTALL NEW SEWER AND CATCHBASIN LEADS BY TRENCHLESS METHODS, UNLESS NOTED OTHERWISE.
4. ALL SHAFTS ON NESS AVENUE TO HAVE CLASS 1 BACKFILL. INSTALL TYPE 'B' RISERS ON CATCHBASIN LEADS AS DIRECTED BY THE CONSULTANT.

GENERAL NOTES:

1. CHAINAGE IS ALONG WEST LIMIT OF BERRY STREET AND BROOKLYN STREET.
2. STATION 1+00 (BERRY) = NORTH LIMIT OF PORTAGE AVENUE. STATION 6+00 (BROOKLYN) = SOUTH LIMIT OF NESS AVENUE.
3. SEE DRAWINGS C0120 TO C0126 FOR TRAFFIC STAGING ON NESS AVENUE AND CENTURY STREET.
4. SEE SPECIFICATIONS FOR DETAILED TEST HOLE INFORMATION.

APEGM
Certificate of Authorization
TETRA TECH WEI Inc.
No. 5313 Date: April 30, 2014

WARNING
IF POWER EQUIPMENT OR EXPLOSIVES ARE TO BE USED FOR EXCAVATION ON THIS PROJECT THE CONTRACTOR MUST:
1. NOTIFY THE GAS COMPANY OF THE PROPOSED LOCATION OF EXCAVATION.
2. TAKE PRECAUTION TO AVOID DAMAGE TO GAS COMPANY INSTALLATIONS. SEE PROVINCIAL REGULATION 140/92 FOR DETAILS.

| EXISTING | LEGEND-PLAN | PROPOSED | EXISTING | LEGEND-PLAN | PROPOSED | EXISTING | LEGEND-PLAN | PROPOSED |
|----------|---------------------|----------|----------------|-------------|-----------------|----------|-------------|----------|
| 150 WM | FEEDERMAIN | 150 WM | BEND | | ANCHOR | | | |
| 400 FM | FEEDERMAIN | 400 FM | TEE | | TREE | | | |
| 300 LDS | LAND DRAINAGE SEWER | 300 LDS | CURB STOP | | LEGAL DIMENSION | | | |
| 250 WWS | WASTEWATER SEWER | 250 WWS | PLUG | | SURVEY BAR | | | |
| 300 CS | COMBINED SEWER | 300 CS | MANHOLE | | TRAFFIC SIGNAL | | | |
| 200 FCM | FORCEMAIN | 200 FCM | CATCHBASIN | | GAS | | | |
| | JUNCTIONS | | CURB INLET | | HYDRO | | | |
| | HYDRANT | | ADDRESS | | MTS | | | |
| | VALVE | | HYDRO POLE | | SIDEWALK | | | |
| | REDUCER | | LIGHT STANDARD | | CURB | | | |

LOCATION APPROVED UNDERGROUND STRUCTURES

| SUPV. U/G STRUCTURES COMMITTEE | DATE |
|--------------------------------|------|
| | |

NOTE:
LOCATION OF UNDERGROUND STRUCTURES AS SHOWN ARE BASED ON THE BEST INFORMATION AVAILABLE. BUT NO GUARANTEE IS GIVEN THAT ALL EXISTING UTILITIES ARE SHOWN OR THAT THE GIVEN LOCATIONS ARE EXACT. CONFIRMATION OF EXISTENCE AND EXACT LOCATION OF ALL SERVICES MUST BE OBTAINED FROM THE INDIVIDUAL UTILITIES BEFORE PROCEEDING WITH CONSTRUCTION.

| B.M. ELEV. | DATE | BY |
|------------|------|----|
| | | |

TETRA TECH

DESIGNED BY: KJM, GWC
CHECKED BY:
DRAWN BY: GMD
APPROVED BY:
HOR. SCALE: 1 : 250
VERTICAL: 1 : 50
ISSUED FOR TENDER: 13.05.13
ISSUED FOR APPROVAL: 13.05.10
NO. REVISIONS: 0

PROVINCE OF MANITOBA
Member
No. 8227
REGISTERED PROFESSIONAL ENGINEER

CONSULTANT DRAWING NO. 1000120300-DWG-C0106

THE CITY OF WINNIPEG
WATER AND WASTE DEPARTMENT

FERRY ROAD AND RIVERBEND COMBINED SEWER RELIEF WORKS CONTRACT 1
BERRY STREET
8m SOUTH OF NESS AVE TO 13m NORTH OF NESS AVE
BROOKLYN STREET
6m SOUTH OF NESS AVE TO 9m NORTH OF NESS AVE

CITY DRAWING NUMBER LD-7110
SHEET 6 OF 26
C0106

