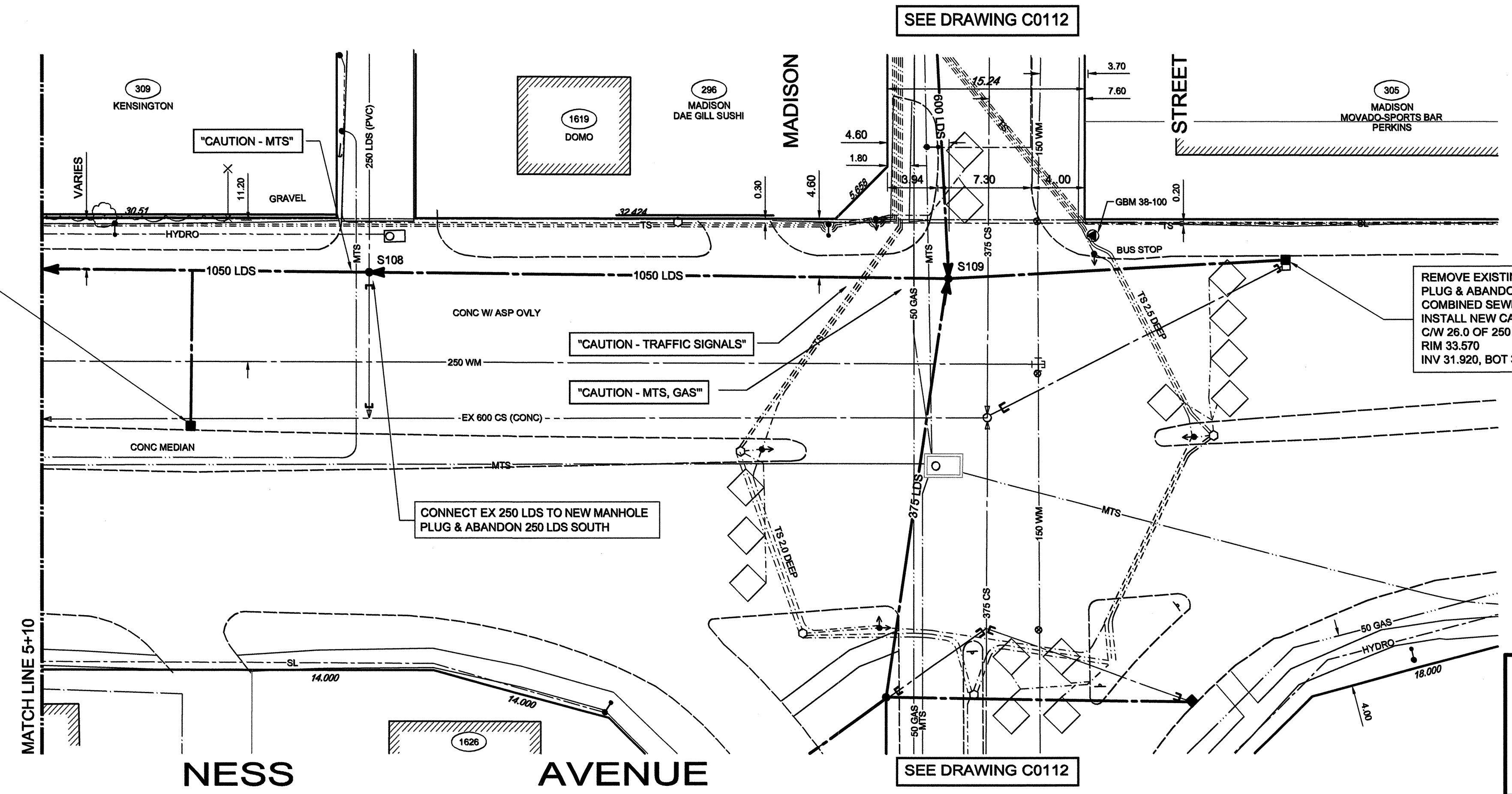
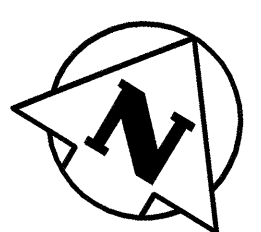


DWG NORTH

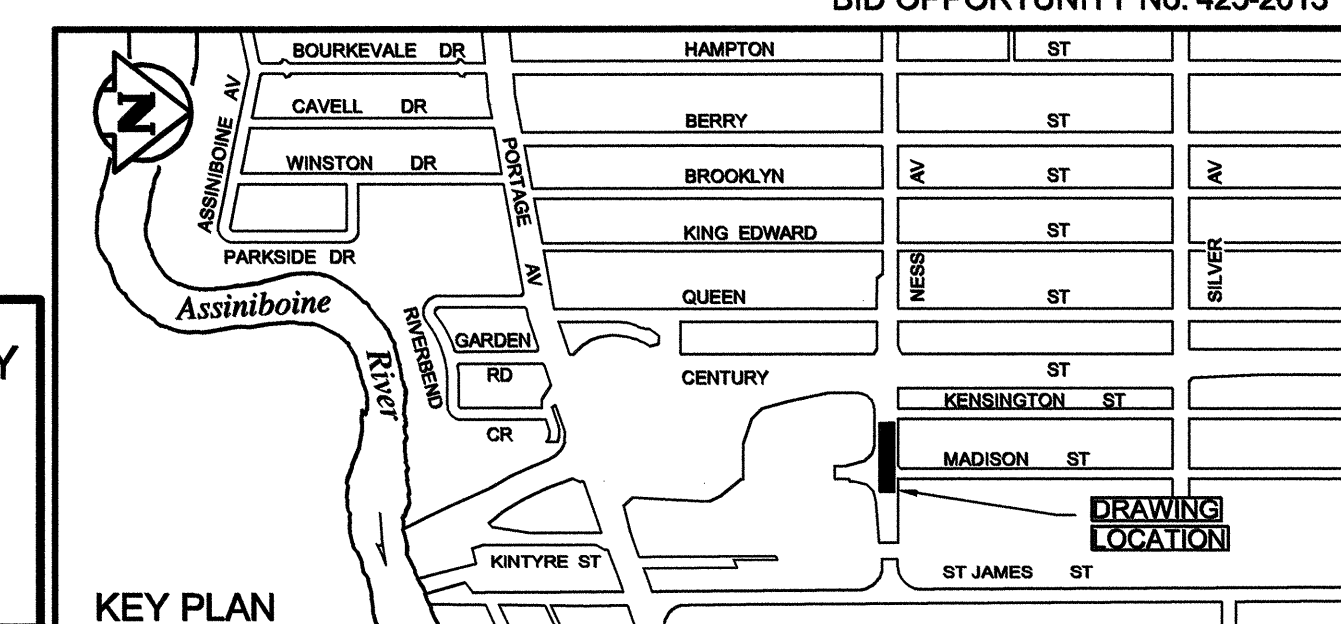


CONSTRUCTION NOTES:

1. LOCATION OF ALL SEWER AND WATER LINES TO BE CONFIRMED IN THE FIELD.
2. SEWER AND WATER SERVICES SHOWN ON DRAWINGS ARE APPROXIMATE ONLY.
3. INSTALL NEW SEWER AND CATCHBASIN LEADS BY TRENCHLESS METHODS, UNLESS NOTED OTHERWISE.
4. ALL SHAFTS ON NESS AVENUE TO HAVE CLASS 1 BACKFILL.
5. INSTALL TYPE 'B' RISERS ON CATCHBASIN LEADS AS DIRECTED BY THE CONSULTANT.

GENERAL NOTES:

1. CHAINAGE IS ALONG NORTH LIMIT OF NESS AVENUE.
2. STATION 1+00 = EAST LIMIT OF BERRY STREET
3. SEE DRAWINGS C0120 TO C0126 FOR TRAFFIC STAGING ON NESS AVENUE AND CENTURY STREET.
4. SEE SPECIFICATIONS FOR DETAILED TEST HOLE INFORMATION.



PRELIMINARY DRAWING  
NOT TO BE USED FOR CONSTRUCTION

**APEGM**  
Certificate of Authorization  
TETRA TECH WEI Inc.  
No. 5313 Date: April 30, 2014

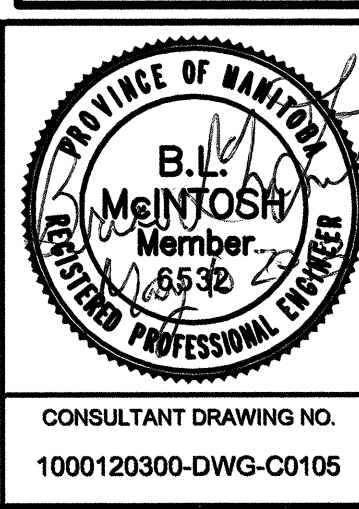
**WARNING**  
IF POWER EQUIPMENT OR EXPLOSIVES ARE TO BE USED FOR EXCAVATION ON THIS PROJECT THE CONTRACTOR MUST:  
1. NOTIFY THE GAS COMPANY OF THE PROPOSED LOCATION OF EXCAVATION.  
2. TAKE PRECAUTION TO AVOID DAMAGE TO GAS COMPANY INSTALLATIONS. SEE PROVINCIAL REGULATION 14092 FOR DETAILS.

EXISTING	LEGEND-PLAN	PROPOSED	EXISTING	LEGEND-PLAN	PROPOSED	EXISTING	LEGEND-PLAN	PROPOSED
150 WM	WATERMAIN	150 WM	BEND	ANCHOR				
400 FM	FEEDERMAIN	400 FM	TEE	TREE				
300 LDS	LAND DRAINAGE SEWER	300 LDS	PLUG	LEGAL DIMENSION				
250 WWS	WASTEWATER SEWER	250 WWS	SIGNALS SERVICE PIT	SURVEY BAR				
300 CS	COMBINED SEWER	300 CS	MANHOLE	TRAFFIC SIGNAL				
200 FCM	FORCEMAIN	200 FCM	CATCHBASIN	GAS				
	JUNCTIONS		CURB INLET	HYDRO				
	HYDRANT		ADDRESS	MTS				
	VALVE		HYDRO POLE	SIDEWALK				
	REDUCER		LIGHT STANDARD	CURB				
				LEGEND-PLAN				

LOCATION APPROVED UNDERGROUND STRUCTURES  
SUPV. U/G STRUCTURES COMMITTEE DATE  
NOTE: LOCATION OF UNDERGROUND STRUCTURES AS SHOWN ARE BASED ON THE BEST INFORMATION AVAILABLE. BUT NO GUARANTEE IS GIVEN THAT ALL EXISTING UTILITIES ARE SHOWN OR THAT THE GIVEN LOCATIONS ARE EXACT. CONFIRMATION OF EXISTENCE AND EXACT LOCATION OF ALL SERVICES MUST BE OBTAINED FROM THE INDIVIDUAL UTILITIES BEFORE PROCEEDING WITH CONSTRUCTION.

B.M. ELEV.	NO.	REVISIONS	DATE	BY
	01	ISSUED FOR TENDER	13.05.13	BLM
	00	ISSUED FOR APPROVAL	13.05.10	

**TETRA TECH**  
DESIGNED BY: KJM, GWC  
CHECKED BY:  
DRAWN BY: GMD  
APPROVED BY:  
HOR. SCALE: 1:250  
VERTICAL: 1:50  
RELEASED FOR CONSTRUCTION  
DATE: 12.09.05



**THE CITY OF WINNIPEG**  
WATER AND WASTE DEPARTMENT  
FERRY ROAD AND RIVERBEND COMBINED SEWER RELIEF WORKS CONTRACT 1  
NESS AVENUE  
8m EAST OF KENSINGTON STREET TO MADISON STREET

CITY DRAWING NUMBER: LD-7109  
SHEET 5 OF 26  
C0105

CONSULTANT DRAWING NO. 1000120300-DWG-C0105