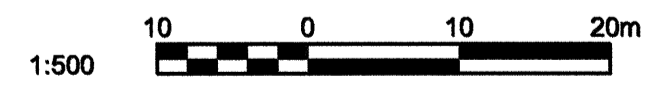


PRELIMINARY DRAWING
NOT TO BE USED FOR CONSTRUCTION

APEGM
Certificate of Authorization
TETRA TECH WEI Inc.
No. 5313 Date: April 30, 2014

- STAGE 5 WORKS**
- S-5.1 ABANDON DEWATERING WELLS AND REMOVE PIPING ON SOUTH SIDE OF 1500 LDS AND RESTORE PAVEMENT. (COMPLETE FIRST)
 - S-5.2 REMOVE TEMPORARY PAVEMENT WIDENING. RESTORE PAVEMENT TO ITS ORIGINAL CONFIGURATION. SEE DRAWING C0126 FOR DETAILS.
 - S-5.3 REMOVE TEMPORARY SAFETY CURB AND RECONSTRUCT IN ITS ORIGINAL LOCATION. SEE DRAWING C0126 FOR DETAILS.

- NOTES**
1. THE CITY MAY CONSIDER FOR SHORT DURATIONS MAINTAINING ONE SOUTHBOUND LANE SUNDAYS TO THURSDAYS - 10PM TO 6AM AND FRIDAYS 10PM TO 6AM.



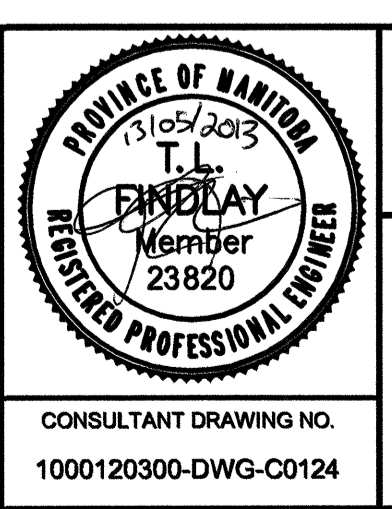
EXISTING	LEGEND-PLAN	PROPOSED	EXISTING	LEGEND-PLAN	PROPOSED	EXISTING	LEGEND-PLAN	PROPOSED
⊕	HYDRANT		—	LAND DRAINAGE SEWER	300 LDS	→	LANE CLOSURE	
⊙	VALVE		—	LAND DRAINAGE SEWER (FUTURE CONTRACT)		→	TRAFFIC FLOW	
○	MANHOLE		—	WATERMAIN	150 WM	→	LANE	
□	CATCHBASIN		—	COMBINED SEWER	300 CS	→	POLY POST	
▽	CURB INLET		—	TRAFFIC SIGNAL		→	TEMPORARY PAVEMENT	
•	HYDRO POLE		—	GAS		↑	SIGN POST	
⊕	LIGHT STANDARD		—	HYDRO		↑	SIDEWALK	
⊕	ANCHOR		—	MTS		↑	CURB	
⊕	TREE		—	PROPERTY LINE		↑		

LOCATION APPROVED UNDERGROUND STRUCTURES	DATE
SUPV. U/G STRUCTURES COMMITTEE	

NOTE: LOCATION OF UNDERGROUND STRUCTURES AS SHOWN ARE BASED ON THE BEST INFORMATION AVAILABLE. BUT NO GUARANTEE IS GIVEN THAT ALL EXISTING UTILITIES ARE SHOWN OR THAT THE GIVEN LOCATIONS ARE EXACT. CONFIRMATION OF EXISTENCE AND EXACT LOCATION OF ALL SERVICES MUST BE OBTAINED FROM THE INDIVIDUAL UTILITIES BEFORE PROCEEDING WITH CONSTRUCTION.

B.M. ELEV.	DATE	BY

TETRA TECH	DESIGNED BY: DAL	CHECKED BY:
	DRAWN BY: GMD	APPROVED BY:
	HOR. SCALE: 1:500	RELEASED FOR CONSTRUCTION:
	VERTICAL:	DATE: 13.03.06



THE CITY OF WINNIPEG
WATER AND WASTE DEPARTMENT

FERRY ROAD AND RIVERBEND COMBINED SEWER RELIEF WORKS CONTRACT 1

PROPOSED TRAFFIC CONTROL
NESS AVENUE STAGE 5

CITY DRAWING NUMBER: SHEET 24 OF 26
C0124

CONSULTANT DRAWING NO. 1000120300-DWG-C0124

BID OPPORTUNITY No. 425-2013