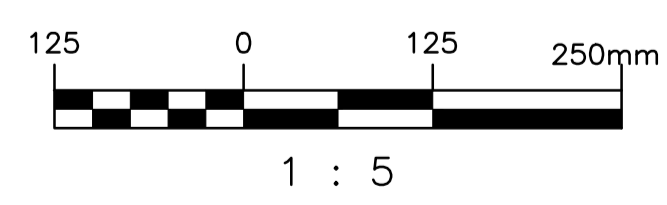
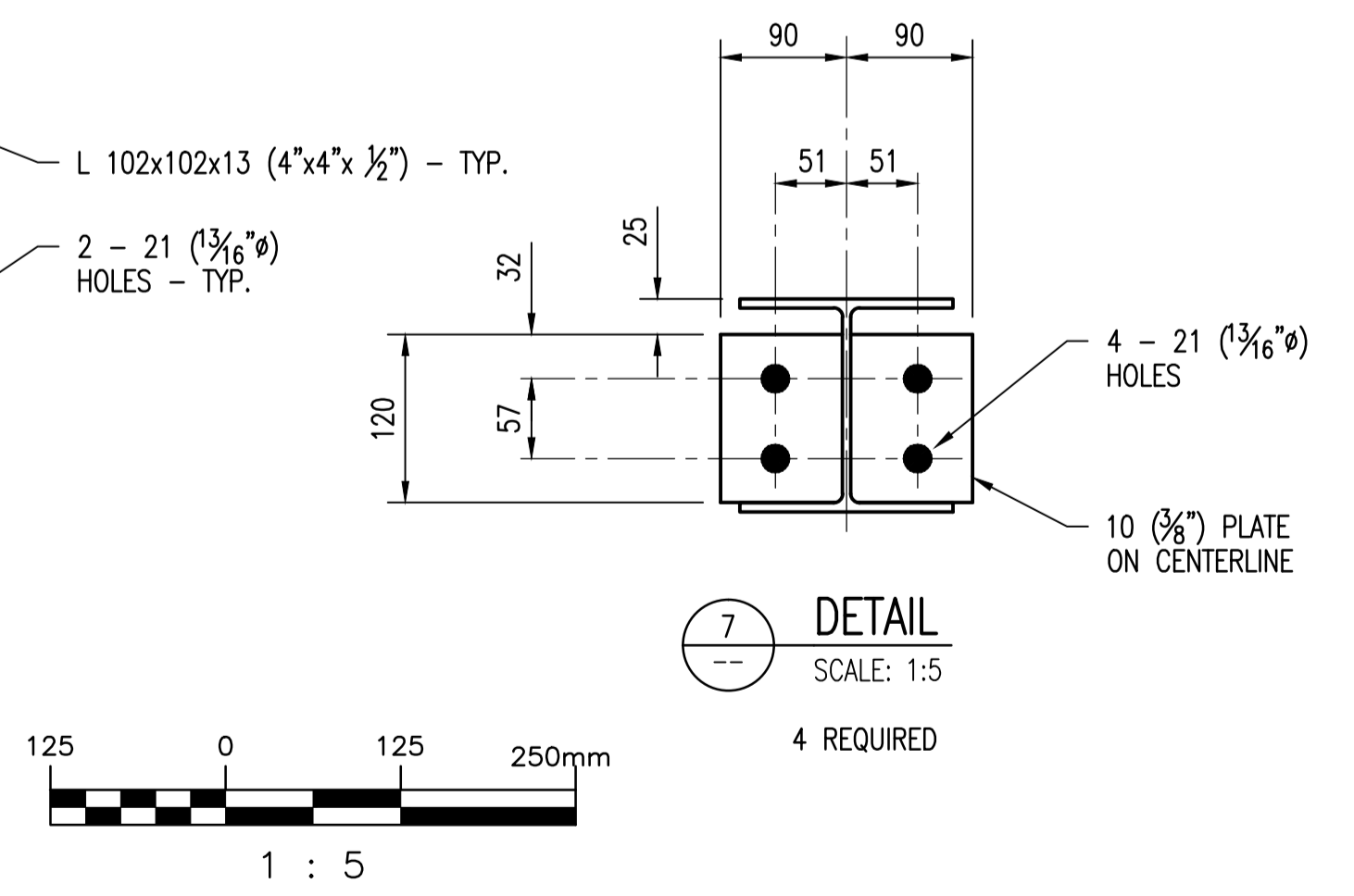
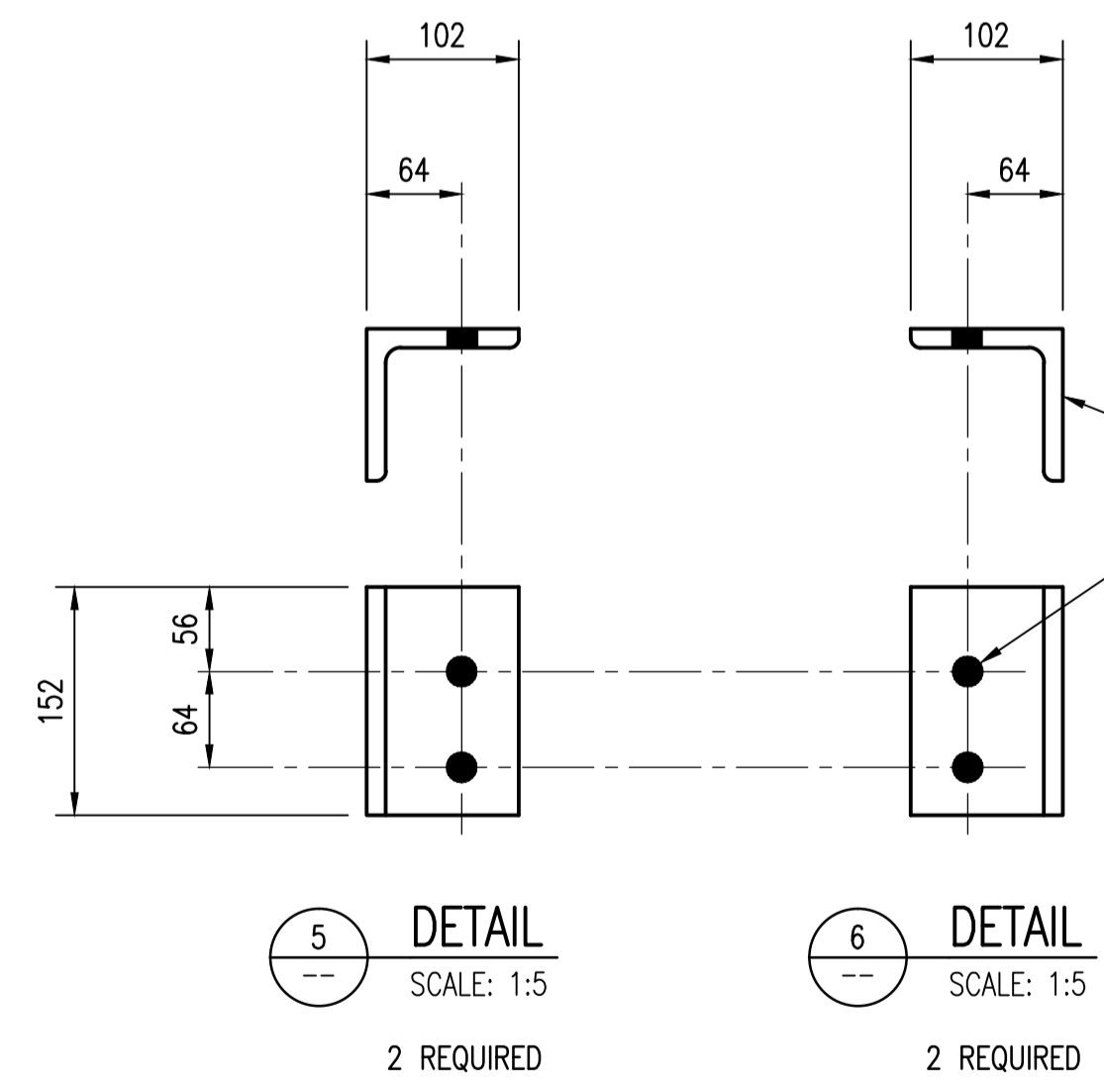
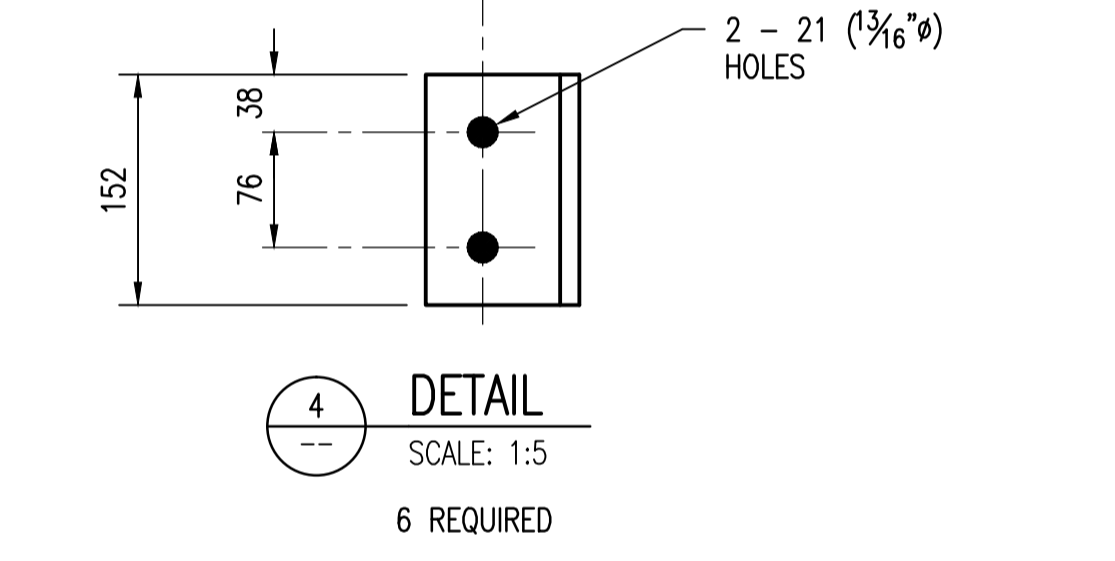
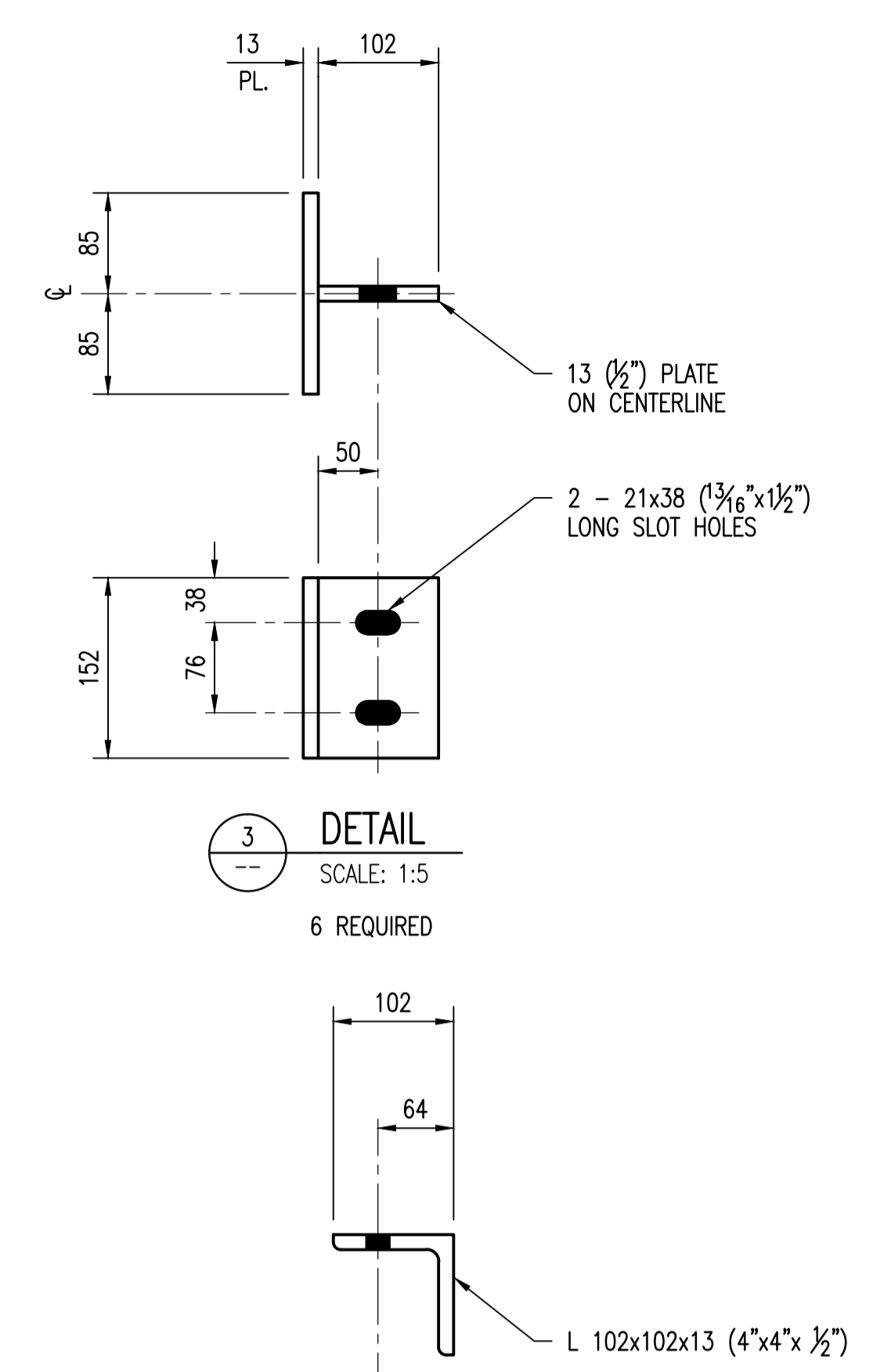
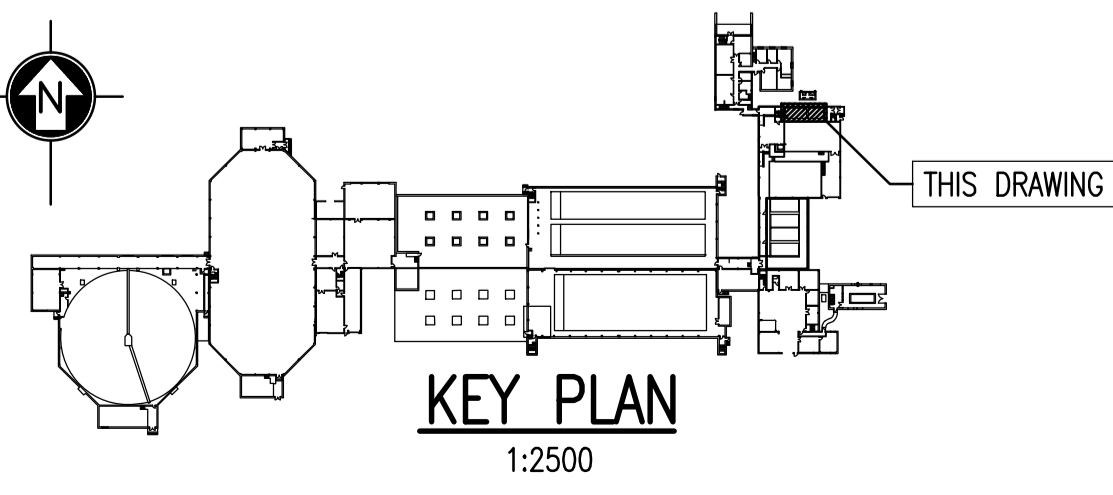
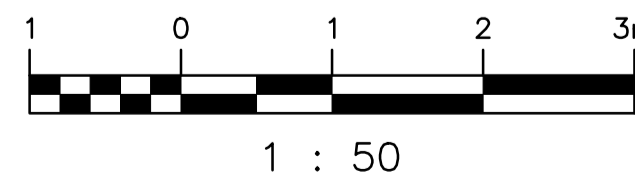
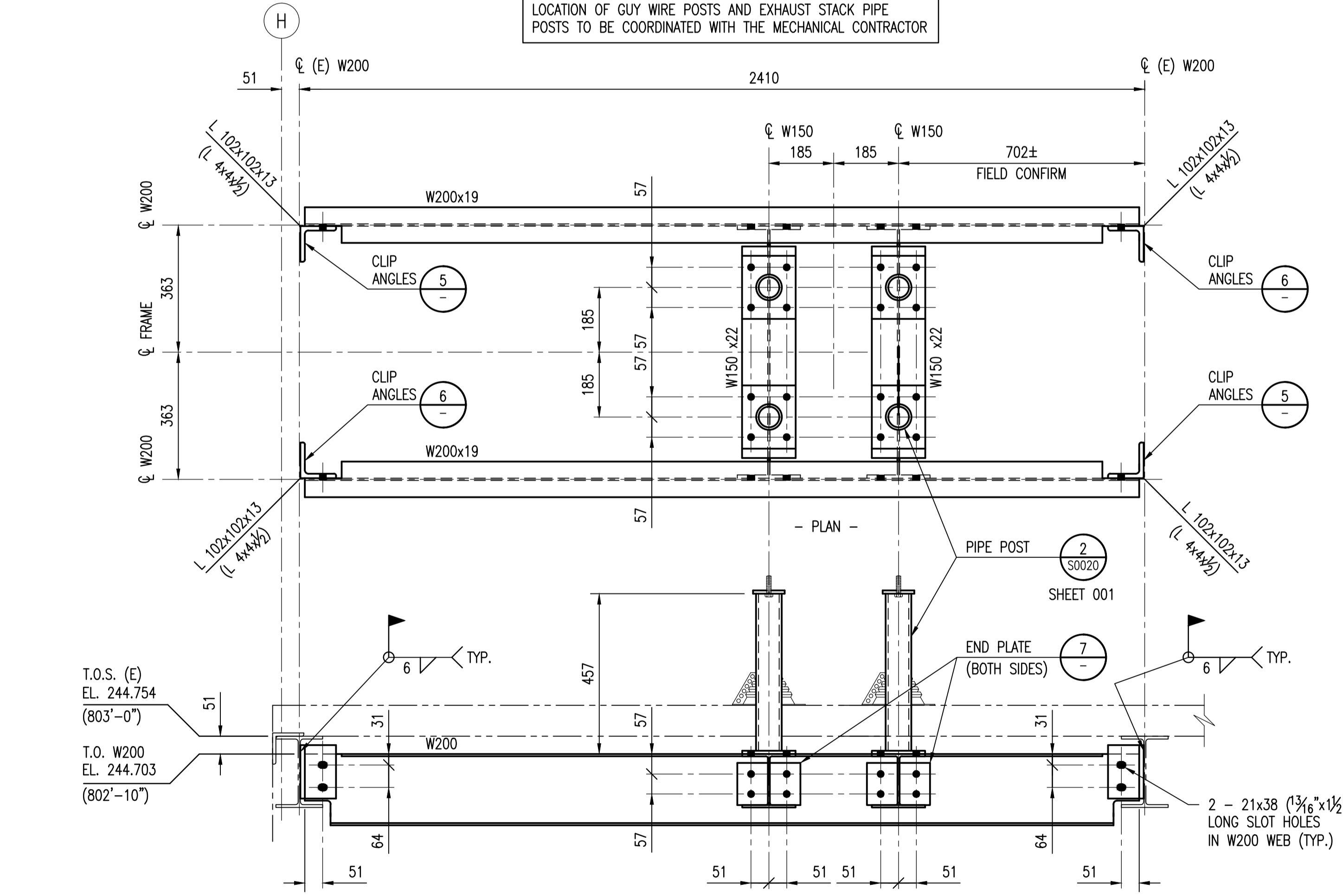


LOCATION OF GUY WIRE POSTS AND EXHAUST STACK PIPE POSTS TO BE COORDINATED WITH THE MECHANICAL CONTRACTOR



NOTES:

- SEE DRAWING 1-0102G-S0020 SHEET 001 FOR GENERAL NOTES.
- STRUCTURAL STEEL:**
- STRUCTURAL STEEL SHALL BE PAINTED UNLESS INDICATED OTHERWISE ON THE DRAWINGS.
- ALL STRUCTURAL STEEL SHAPES AND PLATES TO BE IN ACCORDANCE WITH CAN3-G40.21-M MINIMUM GRADE 300W. W SECTIONS AND HSS SECTIONS TO BE GRADE 350W.
- ALL STRUCTURAL 304 S.S. SHAPES, PLATES AND PIPES TO CONFORM TO ASTM A276, A167 & A269.
- DETAILING, FABRICATION AND ERECTION TO BE IN ACCORDANCE WITH CAN/CSA-S16-01. LIMIT STATES DESIGN OF STRUCTURAL STEEL.
- ALL WELDING TO CONFORM TO CSA W47.1 & W59.
- WELDING SHOPS TO BE CERTIFIED TO DIVISION 1 OR 2 OF CSA W47.1 BY THE CANADIAN WELDING BUREAU. ALL WELDING TO BE PERFORMED BY CWB CERTIFIED WELDERS.
- PREPARATION OF SURFACES AND THE APPLICATION OF PAINT SHALL BE IN ACCORDANCE WITH THE MANUFACTURER'S INSTRUCTIONS. REFER TO PAINT SPECIFICATIONS FOR PAINT FINISHES AND FORMULAE.
- ALL BOLTS FOR STRUCTURAL STEEL SHALL BE 19 (3/4) HIGH STRENGTH BOLTS MEETING THE REQUIREMENTS OF ASTM A325, TYPE 1. ALL NUTS SHALL CONFORM TO ASTM SPEC A563, GRADE DH, OR ASTM A194, GRADE 2H, AND WASHERS SHALL CONFORM TO ASTM SPEC F436. BOLTS, NUTS AND WASHERS SHALL NOT BE WELDED.
- ALL BOLTED CONNECTIONS SHALL USE A MIN. OF TWO HIGH STRENGTH BOLTS UNLESS NOTED OTHERWISE.
- SUBMIT SHOP DRAWINGS FOR REVIEW PRIOR TO FABRICATION AND ERECTION. SHOP DRAWINGS TO BE SEALED BY A PROFESSIONAL ENGINEER INDICATING RESPONSIBILITY FOR CONNECTIONS AND DETAILING, WHERE APPLICABLE.

S.E.P.-28	PUMP & SCREEN BLDG. - STRUCTURAL ROOF & PENTHOUSE DETAILS
DRAWING NUMBER	REFERENCE DRAWINGS



SNC-LAVALIN INC. 148 Nature Park Way Winnipeg, MB, Canada R3P 0X7 204-786-8080	
DESIGNED BY: B. DICKSON	CHECKED BY: D. SIDHU
DRAWN BY: B. DICKSON	APPROVED BY: C. REIMER
SCALE: AS NOTED	RELEASED FOR CONSTRUCTION BY: NEIL HARRINGTON
DATE: 2012/11/08	DATE: 2012/10/10
CONSULTANT NO.: 112577-0116-42DD-0009	

ENGINEER'S SEAL
ORIGINAL DRAWING
SEALED BY:
D. S. SIDHU
SNC-LAVALIN
MEMBER #24837
2012/11/26
REV. 00

THE CITY OF WINNIPEG
WATER AND WASTE DEPARTMENT

SOUTH END WATER POLLUTION CONTROL CENTRE
VENTILATION AND MISCELLANEOUS UPGRADES
PLAN & DETAILS
GRIT VENTILATION PENTHOUSE
G686-EF ROOF STACK SUPPORTS

CITY DRAWING NUMBER	SHEET	REV.	SIZE
1-0102G-S0020	002	01	A1

1-0102G-S0020-002-01.dwg