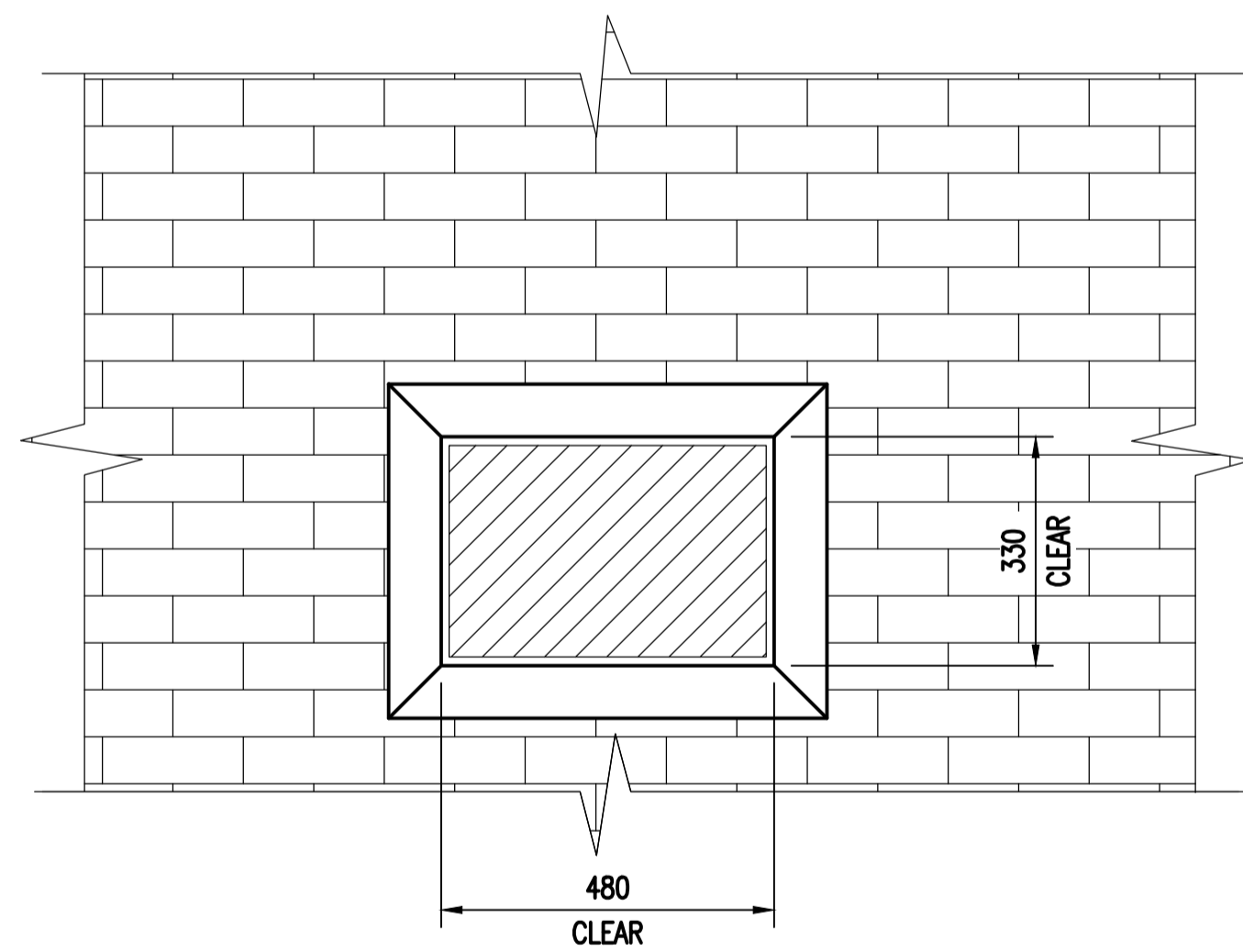


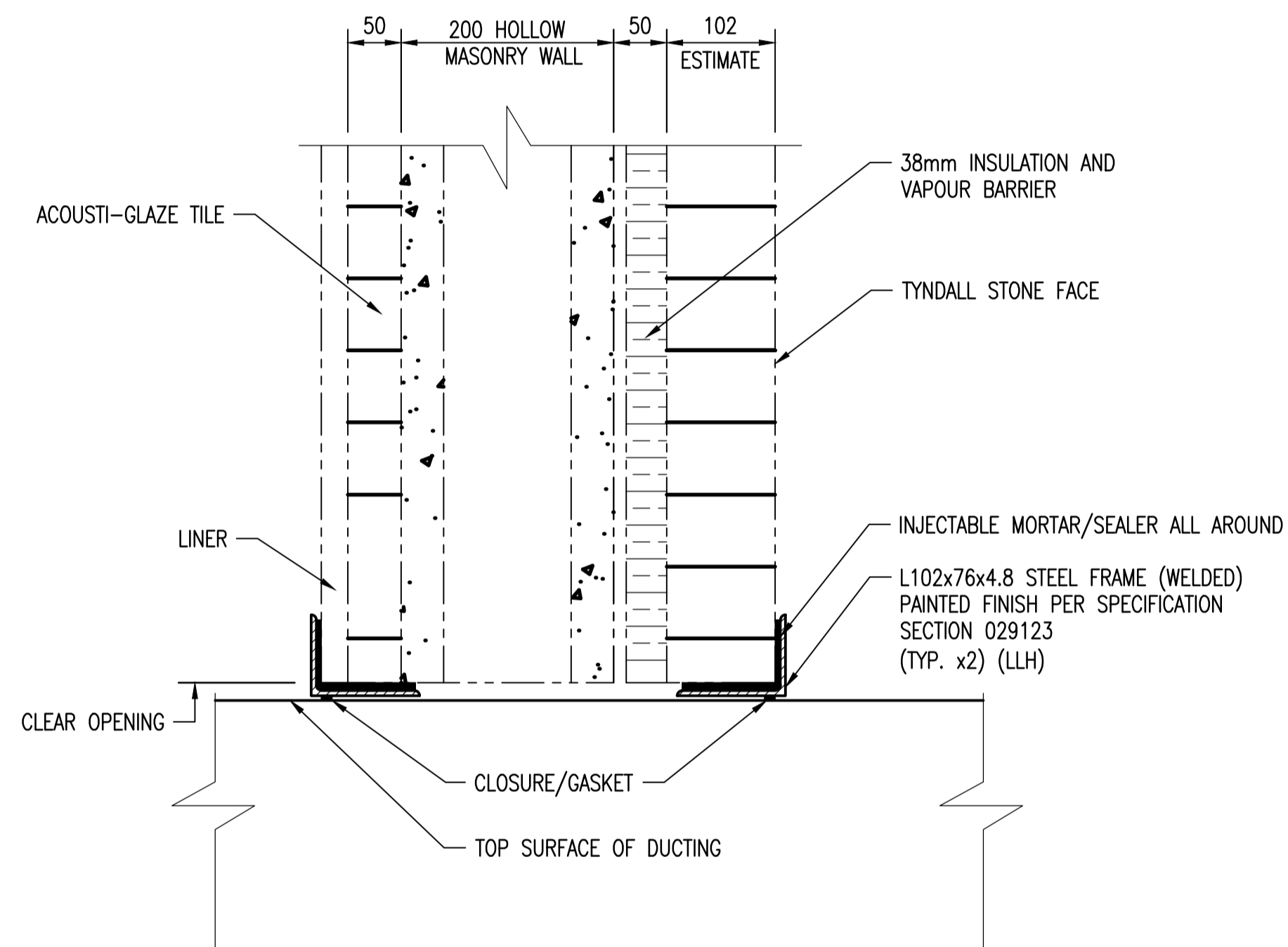
**SPECIFIC NOTES:**

1. CUT BACK EXISTING LINER TO PROVIDE CLEAR OPENING AS INDICATED.
2. SAWCUT AND REMOVE ACOUSTI-GLAZE TILES.
3. SAWCUT EXISTING CONCRETE BLOCK WALL TO CLEAR OPENING AS SHOWN.
4. USE DRY-PAK TO FILL BLOCK IF NEEDED.
5. USE INJECTABLE MORTAR TO IMBED/SEAL ANGLE FRAME TO EXISTING BLOCK.



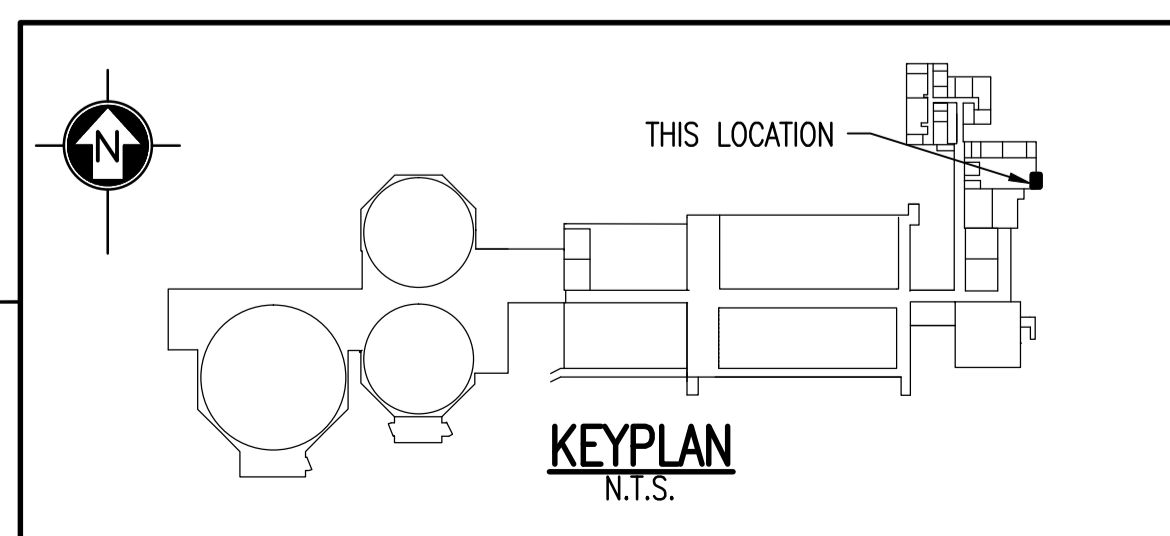
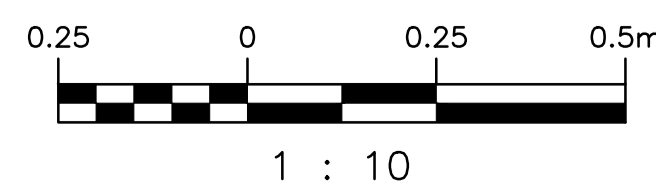
**SPECIFIC NOTES:**

1. SAWCUT AND REMOVE TYNDAL STONES.
2. SAWCUT EXISTING CONCRETE BLOCK WALL TO CLEAR OPENING AS SHOWN.
3. USE DRY-PAK TO FILL BLOCK IF NEEDED.
4. USE INJECTABLE MORTAR TO IMBED/SEAL ANGLE FRAME TO EXISTING BLOCK.



**GENERAL NOTES:**

1. THESE NOTES ARE TO BE READ IN CONJUNCTION WITH THE PROJECT SPECIFICATION.
2. THE CONTRACTOR SHALL COMPLY WITH ALL HEALTH AND SAFETY REQUIREMENTS AND REGULATIONS FOR THE PROVINCE OF MANITOBA.
3. THE DRAWINGS SHOW THE COMPLETED STRUCTURAL SYSTEM; THEY DO NOT SHOW ELEMENTS WHICH MAY BE NECESSARY FOR SAFETY DURING CONSTRUCTION. THE CONTRACTOR IS RESPONSIBLE FOR SAFETY IN AND AROUND THE JOB SITE.
4. ALL WORK IN THE FIELD TO INCORPORATE PROPER SAFETY PRECAUTIONS TO ENSURE THE SAFETY OF THE WORKERS AND PREVENT DAMAGE TO ALL EXISTING EQUIPMENT AND STRUCTURES.
5. DO NOT SCALE DRAWINGS
6. VERIFY ALL DIMENSIONS, ELEVATIONS AND EXTENT OF WORK WITH DRAWINGS AND REPORT ANY DISCREPANCIES OR CONFLICTS TO THE CONTRACT ADMINISTRATOR PRIOR TO PROCEEDING WITH CONSTRUCTION. DO NOT DIMENSION FROM ELECTRONIC DRAWINGS. REWORK OF ITEMS FABRICATED PRIOR TO IDENTIFICATION OF DISCREPANCIES AND/OR CONFLICTS SHALL BE AT NO ADDITIONAL COST TO THE CITY.
7. LOCATE SERVICES AND PROTECT THEM AT ALL TIMES DURING CONSTRUCTION.
8. STRUCTURAL INTEGRITY OF EXISTING STRUCTURES TO BE MAINTAINED DURING CONSTRUCTION.
9. REPORT ANY UNSOUND CONDITIONS OBSERVED OR CREATED IMMEDIATELY TO THE CONTRACT ADMINISTRATOR.
10. MODIFICATIONS, ALTERATIONS, OR SUBSTITUTIONS MUST BE AUTHORIZED IN WRITING BY THE CONTRACT ADMINISTRATOR PRIOR TO ANY FABRICATION OR ERECTION.



NO.	REVISIONS	DATE	DESIGN	CHECK
01	ISSUED FOR TENDER, BID OPP. 42-2013	2013/01/15	KK	RB
00	ISSUED FOR TENDER, BID OPP. 545-2012	2012/10/15	KK	RB

 SNC-LAVALIN INC. 148 Nature Park Way Winnipeg, MB, Canada R3P 0X7 204-786-8080	
DESIGNED BY: K. KOTYK	CHECKED BY: R. BEAN
DRAWN BY: M. TUGADE	APPROVED BY: C. REIMER
SCALE: 1:10	RELEASED FOR CONSTRUCTION BY: N. HARRINGTON
DATE: 2012/06/14	DATE: 2012/10/15
CONSULTANT NO.: 112577-0116-42DD-0004	

ENGINEER'S SEAL  
ORIGINAL DRAWING  
SEALED BY:  
K. K. KOTYK  
SNC-LAVALIN  
MEMBER #21950  
2012/10/19  
REV. 00

**THE CITY OF WINNIPEG**  
WATER AND WASTE DEPARTMENT

SOUTH END WATER POLLUTION CONTROL CENTRE  
VENTILATION & MISC. UPGRADE  
MECHANICAL OPENING & DETAILS  
GRIT BUILDING MOTOR ROOM

CITY DRAWING NUMBER  
**1-0102G-S0017**

SHEET <b>001</b>	REV. <b>01</b>	SIZE <b>A1</b>
---------------------	-------------------	-------------------