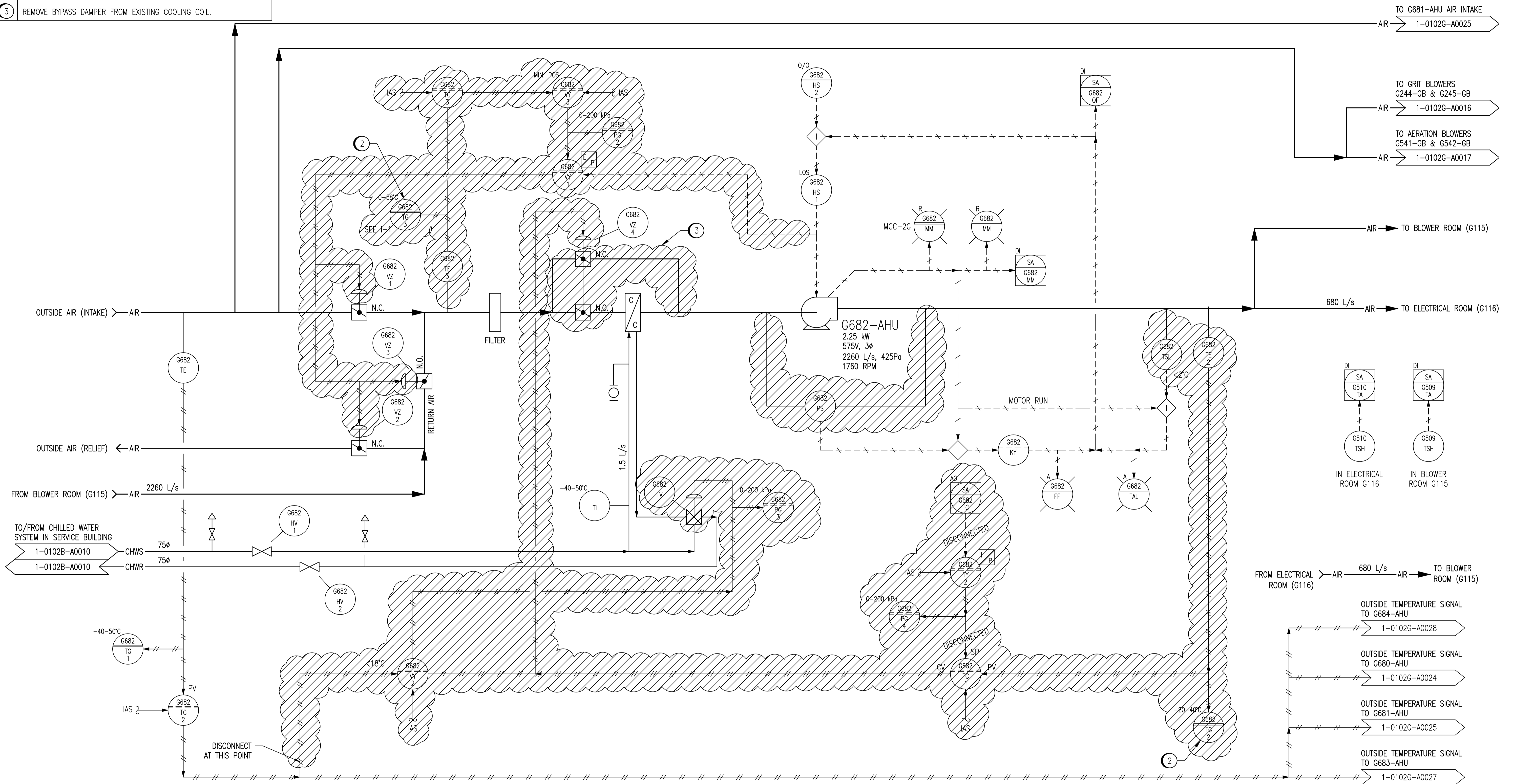


REMOVAL NOTES

- 1 REMOVE ALL TUBING AS SHOWN. LEAVE DISCONNECTED COMPONENTS IN GCP-7 AND LABEL AS SPARE. REMOVE FIELD INSTRUMENTS AND REPAIR DUCTS AS REQUIRED. ENSURE REMAINING EQUIPMENT AND TUBING IN PANEL ARE NOT DAMAGED IN THE PROCESS.
- 2 REMOVE GAUGE FROM DOOR AND COVER HOLE WITH METAL PLATE WITH SAME FINISH AS EXISTING CABINET.
- 3 REMOVE BYPASS DAMPER FROM EXISTING COOLING COIL.

INCONSISTENCIES:

I-1 G682-TG3 IS LABELLED G682-PG4 AT SITE.



NOTES:

1. THIS DRAWING SUPERSEDES PART OF DRAWING SEP-868.
2. ALL INSTRUMENTS SHOWN IN AN AUXILIARY LOCATION ARE LOCATED IN HVAC CONTROL PANEL GCP-7 UNLESS OTHERWISE DESIGNATED.



NO.	REVISIONS	DATE	DESIGN	CHECK
01	ISSUED FOR TENDER, BID OPP. 42-2013	2013/01/15	TMC	CJR
00	ISSUED FOR TENDER, BID OPP. 545-2012	2012/10/11	TMC	CJR

<p>SNC-LAVALIN INC. 148 Nature Park Way Winnipeg, MB, Canada R3P 0X7 204-786-8080</p>		ENGINEER'S SEAL
DESIGNED BY: T. CHURCH	CHECKED BY: C. REIMER	
DRAWN BY: M.J. PERSSON	APPROVED BY: C. REIMER	
SCALE: NTS	RELEASED FOR CONSTRUCTION BY: N. HARRINGTON	
DATE: 2012/01/16	DATE: 2012/10/11	
CONSULTANT NO.: 112577-0116-49DD-0125		

THE CITY OF WINNIPEG
WATER AND WASTE DEPARTMENT

SOUTH END WATER POLLUTION CONTROL CENTRE
PUMP & SCREEN BUILDING
PROCESS & INSTRUMENTATION DIAGRAM
ELECTRICAL ROOM AND BLOWER ROOM COOLING UNIT
G682-AHU - DEMOLITION

CITY DRAWING NUMBER: 1-0102G-A0026
SHEET: D01 01
REV: 01
SIZE: A1