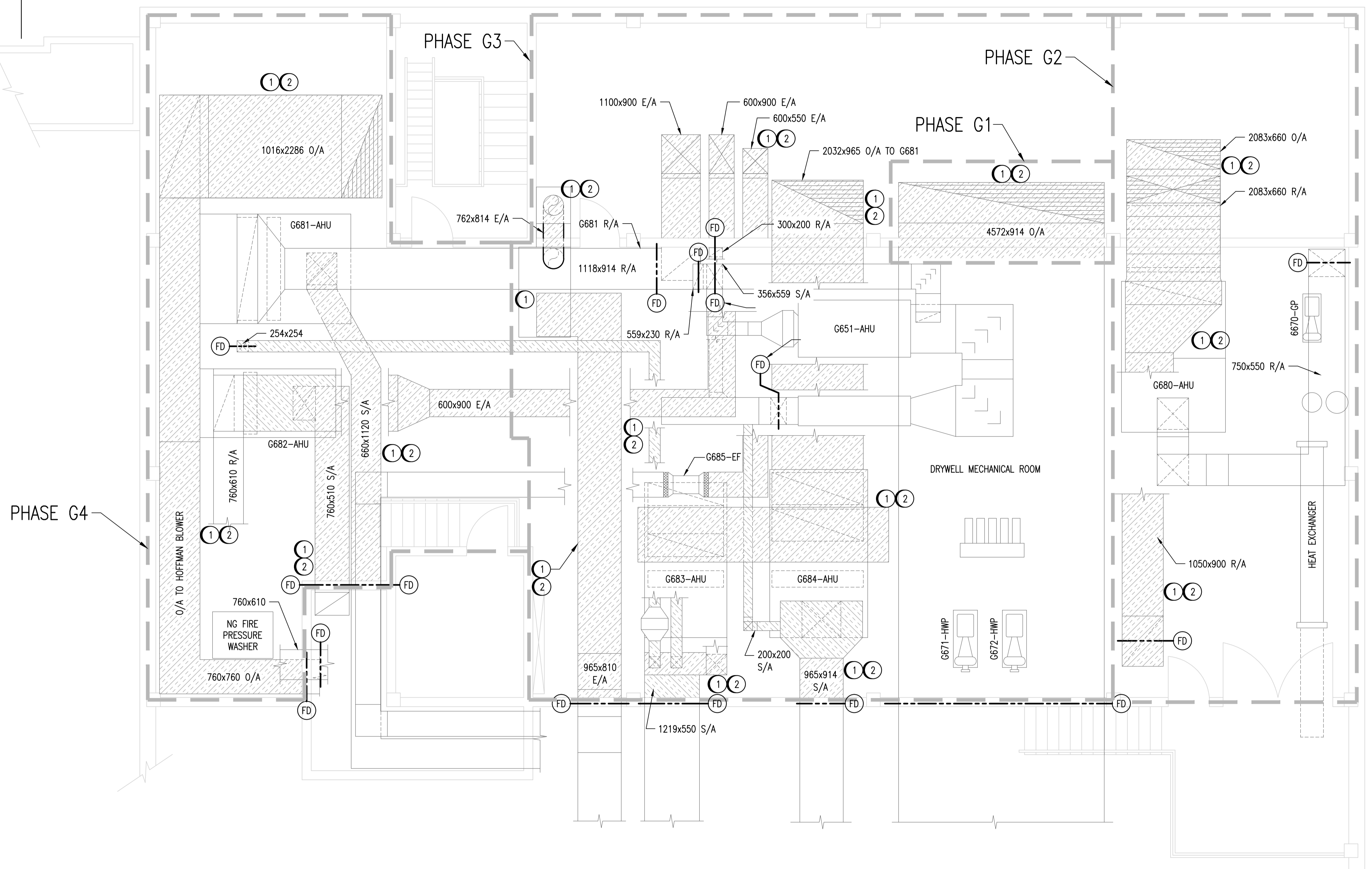


KEYPLAN



NOTES:

- ① DETACH AND TEMPORARILY SUPPORT WIRING, CONDUIT, PIPING, TUBING, ETC. ATTACHED TO DUCTWORK TO ALLOW THE REQUIRED INSULATION REMOVAL. MAINTAIN ALL CONNECTIONS TO ASSOCIATED EQUIPMENT. REINSTALLATION TO BE PERFORMED BY OTHERS.
- ② CONFIRMED AND SUSPECTED ASBESTOS CONTAINING MATERIALS ON DUCTWORK INSULATION ARE TO BE REMOVED. REFER TO ASBESTOS ABATEMENT SPECIFICATIONS FOR ABATEMENT PROCEDURES.

LEGEND

- DUCTWORK WHERE ASBESTOS CONTAINING MATERIALS ARE SUSPECT ON INSULATION
- ENCLOSURE AREA EXTENTS FOR EACH SPECIFIC WORK PHASE IDENTIFIED IN THE ASBESTOS ABATEMENT WORK PLAN



NO.	REVISIONS	DATE	DESIGN	CHECK
00	ISSUED FOR TENDER, BID OPP. 40-2013	2013/01/28	FRS	SSN

SNC-LAVALIN INC. 148 Nature Park Way Winnipeg, MB, Canada R3P 0X7 204-786-8080	
DESIGNED BY: T. SCHICK	CHECKED BY: S. NORSWORTHY
DRAWN BY: C. COOPER	APPROVED BY: C. REIMER
SCALE: 1 : 50	RELEASED FOR CONSTRUCTION BY: NEIL HARRINGTON DATE: 2013/01/24
DATE: 2013/01/14	DATE: 2013/01/24
CONSULTANT NO.: 112577-0116-45DD-1004	

ENGINEER'S SEAL
 ORIGINAL DRAWING
 SEALED BY:
 S. S. NORSWORTHY
 SNC-LAVALIN
 MEMBER #20725
 2013/01/29
 REV. 00

THE CITY OF WINNIPEG
 WATER AND WASTE DEPARTMENT

SOUTH END WATER POLLUTION CONTROL CENTRE
 ASBESTOS ABATEMENT
 PLAN VIEW
 GRIT BUILDING MECHANICAL ROOMS

CITY DRAWING NUMBER	SHEET	REV.	SIZE
1-0102G-M0016	001	00	A1