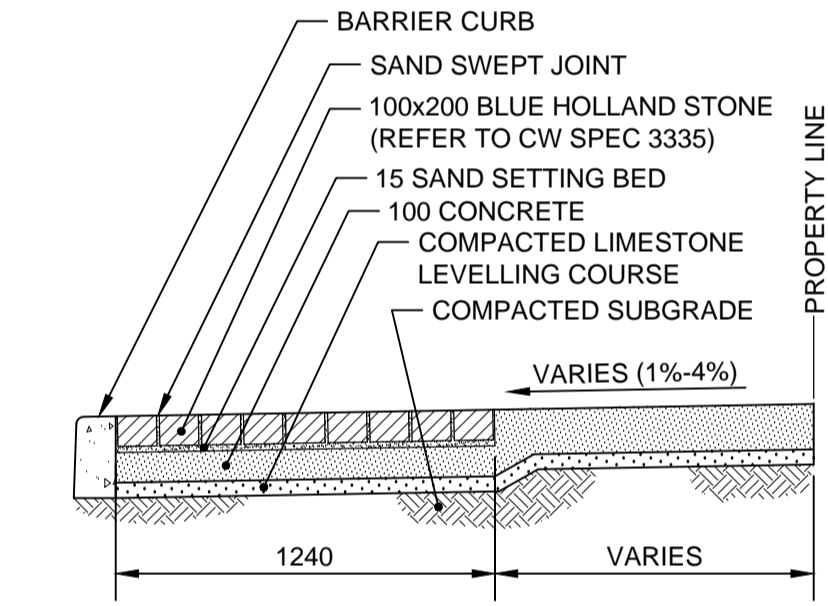
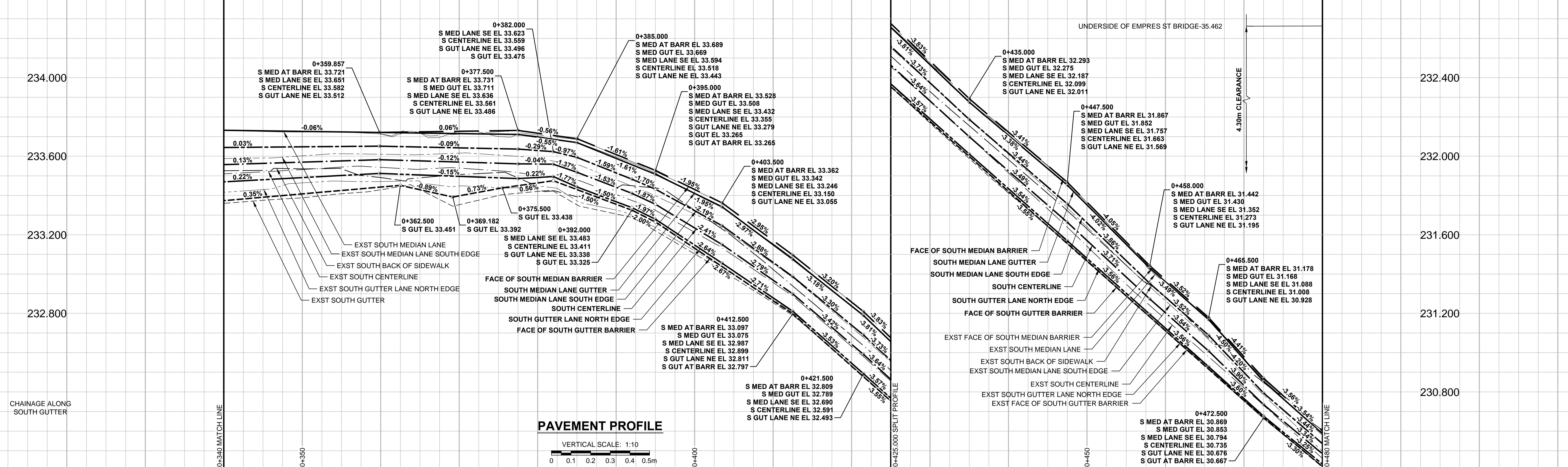
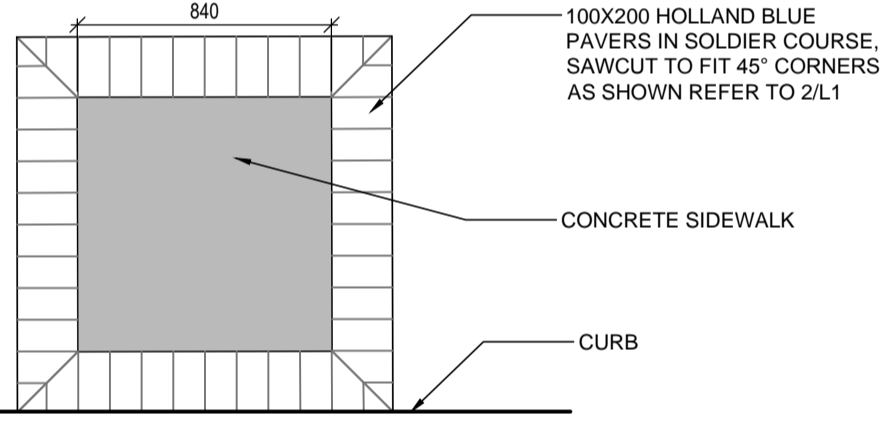


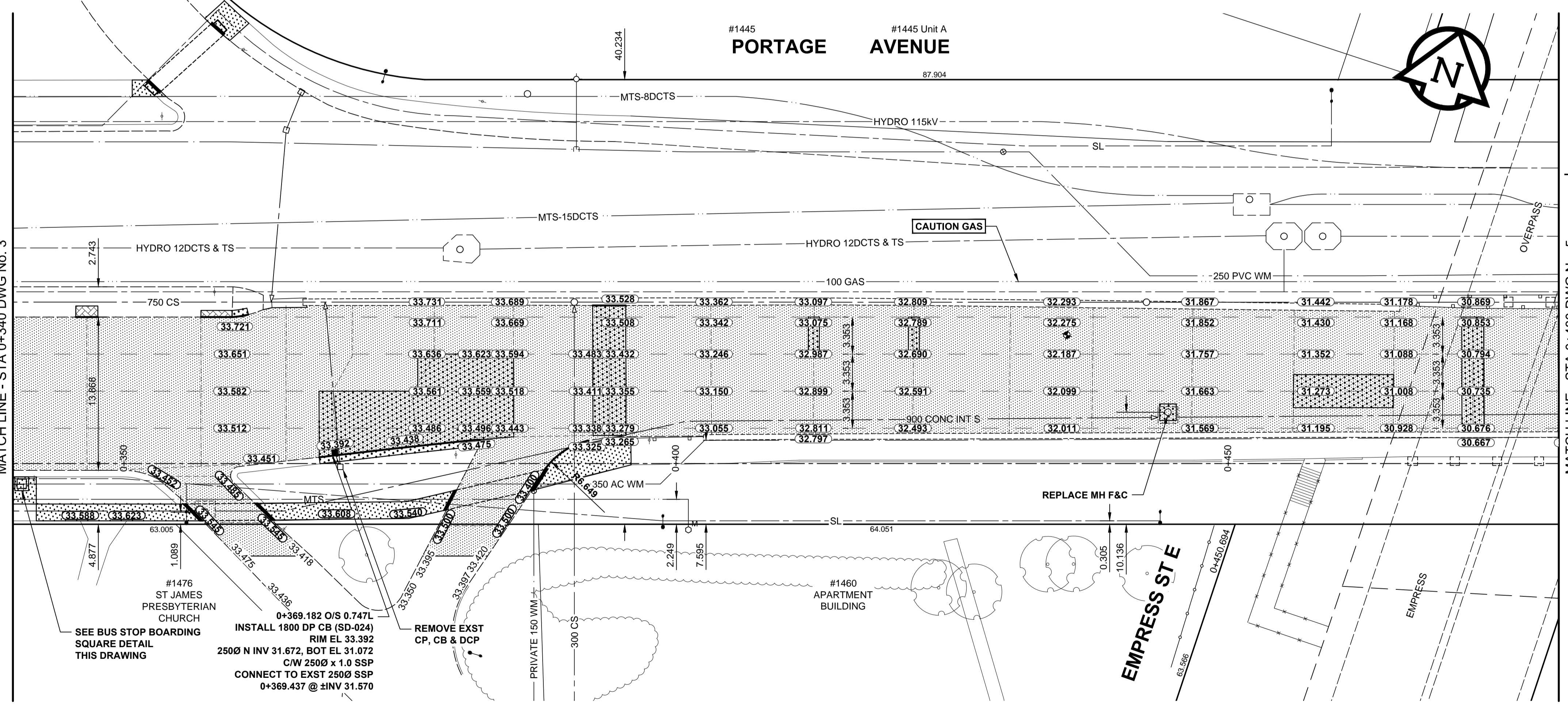
A1 SIZE 894mm x 841mm
PLOT: 5/16/2013 1:23:03 PM
FILE NAME: W130009-T-004_RX.dwg Saved By: ddbszpod



BUS STOP BOARDING SQUARE SECTION
N.T.S.



BUS STOP BOARDING SQUARE DETAIL
N.T.S.



- NOTES**
- ADJUST MH AND CB RIMS TO NEW GRADES.
 - LAMP STANDARDS, HYDRO POLES, AND ANCHORS MAY REQUIRE TEMPORARY SUPPORT, REMOVAL OR REPLACEMENT, TO BE DONE SO AT THE EXPENSE OF THE CONTRACTOR AS NECESSARY.
 - CONTRACTOR TO REGRADE/RENEW EXIST PRIVATE SIDEWALKS TO LIMITS AS SHOWN. SIDEWALKS TO BE RENEWED WITH CONCRETE UNLESS NOTED OTHERWISE.
 - CONTRACTOR TO TAKE PRECAUTIONARY STEPS TO PROTECT EXISTING TREES WITHIN THE LIMITS OF CONSTRUCTION FROM DAMAGE FROM CONSTRUCTION ACTIVITIES AS OUTLINED IN THE SPECIFICATIONS.
 - MODIFIED BARRIER CURBS TO BE USED AT ALL INTERSECTION RADII, BACK LANE RADII AND BULLNOSES.
 - CONTRACTOR TO CONFIRM THE LOCATION OF ALL UTILITIES/SERVICES IN THE FIELD PRIOR TO CONSTRUCTION, TO OBTAIN GEODETIC ELEVATIONS.
 - ADD 200.00mm TO ABBREVIATED ELEVATIONS TO OBTAIN GEODETIC ELEVATIONS.
 - SD-02 CB OFFSETS ARE DIMENSIONED TO BOC.
 - SD-025 CB OFFSETS ARE DIMENSIONED TO CB CENTER.

METRIC
WHOLE NUMBERS INDICATE MILLIMETRES
DECIMALIZED NUMBERS INDICATE METRES

EXISTING	LEGEND - PLAN	NEW	EXISTING	LEGEND - PLAN	NEW	EXISTING	LEGEND - PLAN	NEW	
	GAS		MANHOLE		CONCRETE PAVEMENT		LOCATION APPROVED		GBM AS NOTED
	MTS		CATCH BASIN / CATCH PIT		CONC SIDEWALK / MEDIAN		DATE		ELEV AS NOTED
	HYDRO		CURB INLET WITH BOX		ASPHALT PAVEMENT		SUPR. U/G STRUCTURES		
	CATV / FIBRE OPTIC		TREE		PAVING STONE		COMMITTEE		
	TRAFFIC SIGNALS / PIT		TEST HOLE		GRAVEL		NOTE:		
	LAND DRAINAGE SEWER		PROPERTY LINE		RAMP CURB		LOCATION APPROVED		
	SANITARY/COMBINED SEWER		SURVEY BAR		PLANING / REMOVAL		NOTE:		
	SEWER SERV/DRAINAGE CONN		FENCE				NOTE:		
	WATERMAIN		BOC / EDGE OF PAVEMENT				NOTE:		
	SUBDRAIN		ELEVATION				NOTE:		
	DITCH		TRAFFIC SIGN				NOTE:		

ISSUED FOR CONSTRUCTION	13/05/15	RPB
No. REVISIONS	YYMMDDI	BY

MORRISON HERSHFIELD

DESIGNED BY: WRJ, GFC, JGK
CHECKED BY: RPB

DRAWN BY: DID, DML
APPROVED BY: BWB

HOR. SCALE: 1:250
VERT. SCALE: 1:10

DATE: 13/05/15

PROFESSIONAL'S SEAL

PROVINCE OF MANITOBA
R.P. BRUCE
REGISTERED PROFESSIONAL ENGINEER

CONSULTANT DRAWING No. W130009-T-004_RX.dwg

THE CITY OF WINNIPEG
PUBLIC WORKS DEPARTMENT
ENGINEERING DIVISION

2013 REGIONAL AND LOCAL STREET PACKAGE
PORTAGE AVENUE, EASTBOUND
ST JOHN AMBULANCE WAY TO SHERBURN STREET
PAVEMENT REHABILITATION
HORIZONTAL AND VERTICAL ALIGNMENT
STA 0+340 TO STA 0+480

CITY DRAWING NUMBER: P-3342-4
SHEET 4 OF 15
DRAWING No. 4
REV 0

BID OPPORTUNITY No. 393-2013