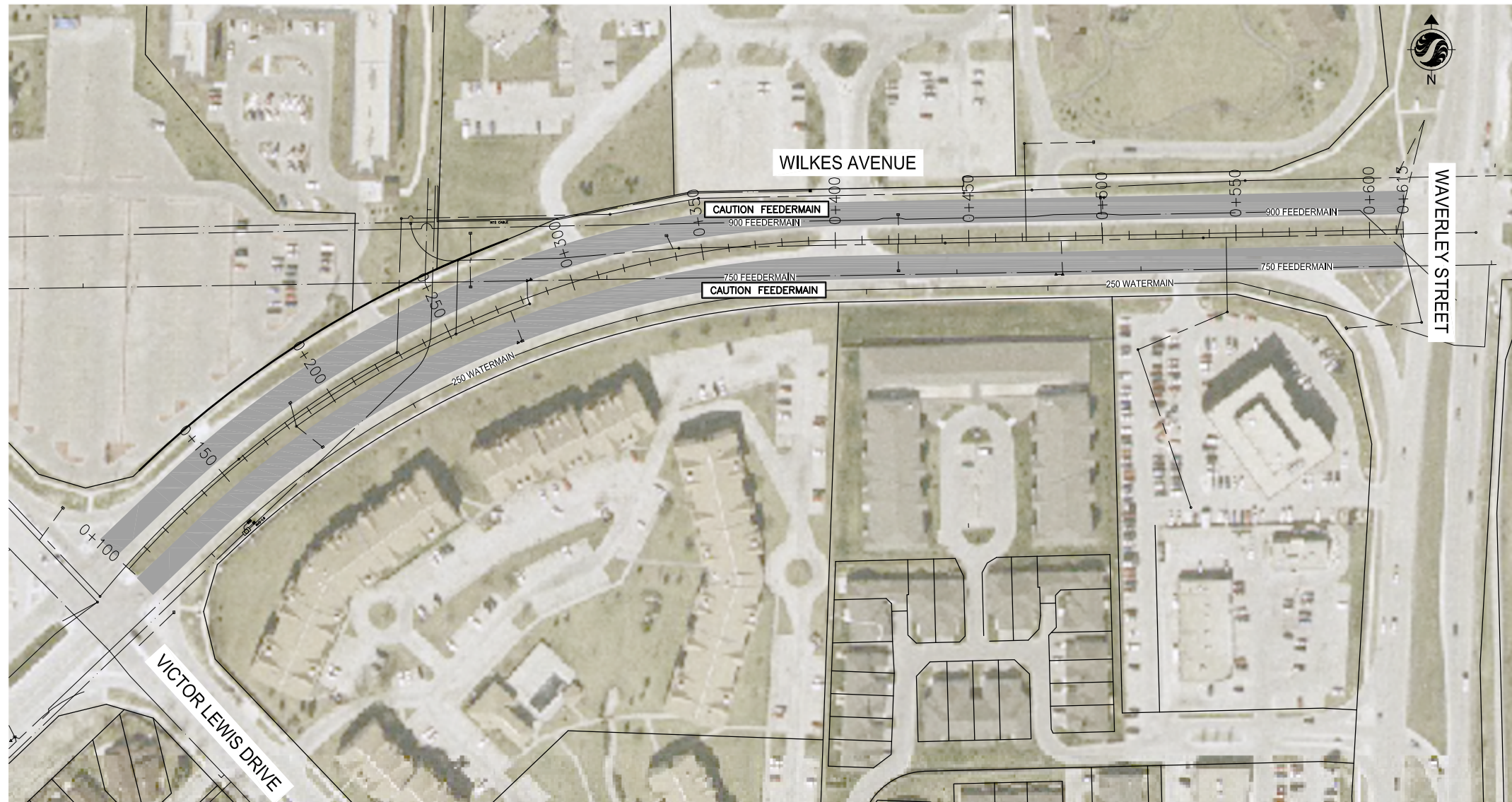


BID OPPORTUNITY NO.: 384-2013

2013 STREETS MAINTENANCE PRESERVATION PROGRAM



NOTES

1. ALL PARTIAL DEPTH JOINT REPAIRS, FULL DEPTH JOINT REPAIRS, AND SLAB REPAIR(S) WILL BE IDENTIFIED AND MARKED ON SITE BY THE CONTRACT ADMINISTRATOR.
2. THE CONTRACTOR WILL ARRANGE WITH THE CONTRACT ADMINISTRATOR AN ON SITE WALK THROUGH TO VERIFY ALL REPAIR LOCATIONS.

METRIC

WHOLE NUMBERS INDICATE MILLIMETRES
DECIMALIZED NUMBERS INDICATE METRES



Certificate of Authorization

Stantec Consulting Ltd.

No. 1301

LEGEND

ASPHALT OVERLAY

CONCRETE PAVEMENT PRESERVATION

NOTE:
LOCATION OF UNDERGROUND STRUCTURES AS SHOWN ARE BASED ON THE BEST INFORMATION AVAILABLE BUT NO GUARANTEE IS GIVEN THAT ALL EXISTING UTILITIES ARE SHOWN OR THAT THE GIVEN LOCATIONS ARE EXACT. CONFIRMATION OF EXISTENCE AND EXACT LOCATION OF ALL SERVICES MUST BE OBTAINED FROM THE INDIVIDUAL UTILITIES BEFORE PROCEEDING WITH CONSTRUCTION.

NO.	REVISIONS	DATE	BY
1	ISSUED FOR TENDER	13/05/06	S.B.C.
0	ISSUED FOR REVIEW	13/04/16	V.M.M.

Stantec Consulting Ltd.
905 Waverley Street, Winnipeg, Manitoba
Tel 204-489-5900 Fax 204-453-9012

DESIGNED BY	B.Q.D.	CHECKED BY	D.J.M.
DRAWN BY	B.Q.D.	APPROVED BY	S.B.C.
HOR. SCALE:	1:2000	RELEASED FOR CONSTRUCTION:	
VERTICAL:	--	DATE	13.04.09

ENGINEER'S SEAL

S.B. COOK
MEMBER 10056
REGISTERED PROFESSIONAL ENGINEER

CONSULTANT DRAWING NO.
C-108

THE CITY OF WINNIPEG
PUBLIC WORKS DEPARTMENT
STREETS MAINTENANCE DIVISION

WILKES AVENUE
VICTOR LEWIS DR. TO WAVERLEY ST.
STA. 0+100 TO STA. 0+613
CONCRETE PAVEMENT PRESERVATION

SHEET	OF
8	8
CAD FILE DRAWING NUMBER	
06030c-101-xxx.DWG	
CITY DRAWING NUMBER	