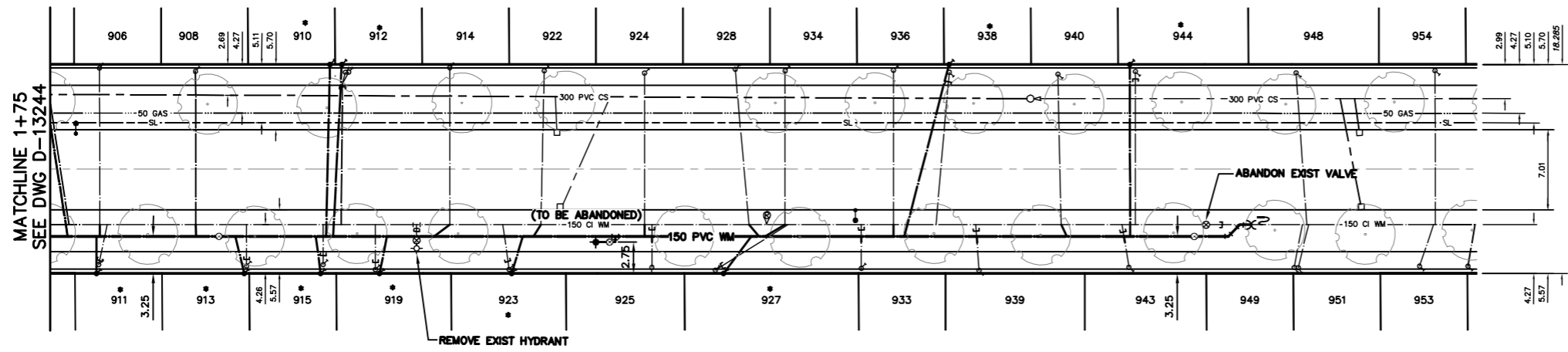


NOTE: CHAINAGES SHOWN ARE ALONG E. R. OF ASHBURN ST.

**ASHBURN STREET**

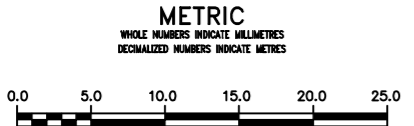


**WATER SERVICE INFORMATION**

ADDRESS	SIZE (mm) MATERIAL (STREET)	SIZE (mm) MATERIAL (PROP.)	SHORT & LONG MEASUREMENT	CORP. LOCATION	REMARKS
906 ASHBURN ST RESIDENTIAL	20 COPPER	20 COPPER	3.6 SNL HSE 80.7>NNL ST. MATTHEWS	OPP S/C	RECONNECT SERVICE
908 ASHBURN ST RESIDENTIAL	12 COPPER	12 COPPER	3.6 SNL HSE 88.0>NNL ST. MATTHEWS	OPP S/C	RECONNECT SERVICE
910 ASHBURN ST RESIDENTIAL	16 LEAD	12 LEAD	0.9 NNL HSE 100.2>NNL ST. MATTHEWS	0.3 N OF S/C	RENEW TO R DBL. SERV. W/#912
911 ASHBURN ST RESIDENTIAL	12 LEAD	12 LEAD	5.2 SNL HSE 78.2>NNL ST. MATTHEWS	0.9 N OF S/C	RENEW TO R
912 ASHBURN ST RESIDENTIAL	16 LEAD	12 LEAD	6.4 SNL HSE 100.5>NNL ST. MATTHEWS	OPP S/C	RENEW TO R DBL. SERV. W/#910
913 ASHBURN ST RESIDENTIAL	12 LEAD	12 LEAD	0.5 SNL HSE 91.2>NNL ST. MATTHEWS	OPP S/C	RENEW TO R
914 ASHBURN ST RESIDENTIAL	20 COPPER	20 COPPER	4.0 SNL HSE 110.0>NNL ST. MATTHEWS	OPP S/C	RECONNECT SERVICE
915 ASHBURN ST RESIDENTIAL	12 LEAD	12 LEAD	1.4 SNL HSE 98.1>NNL ST. MATTHEWS	-	RENEW TO R
919 ASHBURN ST RESIDENTIAL	20 LEAD	20 LEAD	5.2 SNL HSE 103.3>NNL ST. MATTHEWS	OPP S/C	RECONNECT SERVICE
922 ASHBURN ST RESIDENTIAL	20 COPPER	20 COPPER	4.1 SNL HSE 118.0>NNL ST. MATTHEWS	0.3 S OF S/C	RECONNECT SERVICE
923 ASHBURN ST RESIDENTIAL	20 LEAD	20 LEAD	3.4 SNL HSE 115.3>NNL ST. MATTHEWS	0.5 S OF S/C	RECONNECT SERVICE
924 ASHBURN ST RESIDENTIAL	20 COPPER	20 COPPER	3.1 SNL HSE 126.3>NNL ST. MATTHEWS	OPP S/C	RECONNECT SERVICE
925 ASHBURN ST RESIDENTIAL	20 COPPER	20 COPPER	2.6 SNL HSE 127.2>NNL ST. MATTHEWS	OPP S/C	RECONNECT SERVICE
927 ASHBURN ST RESIDENTIAL	12 LEAD	12 LEAD	3.8 SNL HSE 133.8>NNL ST. MATTHEWS	6.6 N OF S/C	RENEW TO R
928 ASHBURN ST RESIDENTIAL	12 COPPER	12 COPPER	0.8 SNL HSE 136.5>NNL ST. MATTHEWS	1.2 N OF S/C	RECONNECT SERVICE
933 ASHBURN ST RESIDENTIAL	20 LEAD	20 LEAD	7.6 SNL HSE 145.1>NNL ST. MATTHEWS	OPP S/C	RECONNECT SERVICE
934 ASHBURN ST RESIDENTIAL	20 COPPER	20 COPPER	5.0 SNL HSE 147.9>NNL ST. MATTHEWS	OPP S/C	RECONNECT SERVICE
936 ASHBURN ST RESIDENTIAL	20 COPPER	20 COPPER	4.9 SNL HSE 155.8>NNL ST. MATTHEWS	OPP S/C	RECONNECT SERVICE
938 ASHBURN ST RESIDENTIAL	20 COPPER	20 COPPER	0.3 SNL HSE 163.7>NNL ST. MATTHEWS	1.2 S OF S/C	RECONNECT SERVICE
939 ASHBURN ST RESIDENTIAL	20 COPPER	20 COPPER	8.4 SNL HSE 163.9>NNL ST. MATTHEWS	0.3 S OF S/C	RECONNECT SERVICE
940 ASHBURN ST RESIDENTIAL	20 COPPER	20 COPPER	3.8 SNL HSE 169.4>NNL ST. MATTHEWS	0.5 S OF S/C	RECONNECT SERVICE
943 ASHBURN ST RESIDENTIAL	20 COPPER	20 COPPER	5.1 SNL HSE 169.8>NNL ST. MATTHEWS	OPP S/C	RECONNECT SERVICE
944 ASHBURN ST RESIDENTIAL	20 LEAD	20 LEAD	8.2 SNL HSE 183.7>NNL ST. MATTHEWS	0.9 N OF S/C	RECONNECT SERVICE
948 ASHBURN ST RESIDENTIAL	20 LEAD	20 LEAD	5.8 SNL HSE 184.3>NNL ST. MATTHEWS	0.8 N OF S/C	RECONNECT SERVICE
949 ASHBURN ST RESIDENTIAL	20 COPPER	20 COPPER	1.0 SNL HSE 184.7>NNL ST. MATTHEWS	0.9 N OF S/C	RECONNECT SERVICE
951 ASHBURN ST RESIDENTIAL	12 COPPER	12 COPPER	6.2 SNL HSE 184.7>NNL ST. MATTHEWS	0.9 N OF S/C	RECONNECT SERVICE

\* SERVICES TO BE RENEWED TO R. ALL OTHERS TO BE RECONNECTED

VALVES TO BE COUNTER-CLOCKWISE TO CLOSE (RED OPERATING NUT)



**WARNING**  
 IF POWER EQUIPMENT OR EXPLOSIVES ARE TO BE USED FOR EXCAVATION ON THIS PROJECT THE CONTRACTOR MUST:  
 1) NOTIFY THE GAS COMPANY OF THE PROPOSED LOCATION OF EXCAVATION.  
 2) TAKE PRECAUTION TO AVOID DAMAGE TO GAS COMPANY INSTALLATIONS.  
 SEE PROVINCIAL REGULATION 210/72 FOR DETAILS

**LOCATION APPROVED UNDERGROUND STRUCTURES**  
 SUPV. U/G STRUCTURES COMMITTEE: \_\_\_\_\_ DATE: \_\_\_\_\_  
 NOTE:  
 LOCATION OF UNDERGROUND STRUCTURES AS SHOWN ARE BASED ON THE BEST INFORMATION AVAILABLE BUT NO GUARANTEE IS GIVEN THAT ALL EXISTING UTILITIES ARE SHOWN OR THAT THE GIVEN LOCATIONS ARE EXACT. CONFIRMATION OF EXISTENCE AND EXACT LOCATION OF ALL SERVICES MUST BE OBTAINED FROM THE INDIVIDUAL UTILITIES BEFORE PROCEEDING WITH CONSTRUCTION.

B.M. ELEV.			
CONSTRUCTION COMPLETION DATE: YYYY MM DD			
DESIGNED BY	MK	CHECKED BY	SC
DRAWN BY	CJH/RS	APPROVED BY	KZ
SCALE:			
HORIZONTAL	1:250		
VERTICAL	1:50		
	K.R. ZUREK		
NO.	REVISIONS	DATE	BY

ENGINEER'S SEAL	
ORIGINAL SIGNED BY S.R.J. COURNOYER 13-05-27	
DESIGNED BY	MK
CHECKED BY	SC
DRAWN BY	CJH/RS
APPROVED BY	KZ
SCALE:	
HORIZONTAL	1:250
VERTICAL	1:50
	K.R. ZUREK
DATE	2013 05 22
DATE	13-05-28

CONSULTANT DRAWING NUMBER: \_\_\_\_\_

**THE CITY OF WINNIPEG**  
 WATER AND WASTE DEPARTMENT  
 ENGINEERING DIVISION  
**2013 WATER RENEWALS**  
**ASHBURN STREET**  
 75 N OF ST MATTHEWS AVENUE TO  
 200 N OF ST MATTHEWS AVENUE

SHEET 3 OF 11  
 CITY DRAWING NUMBER  
**D-13245**