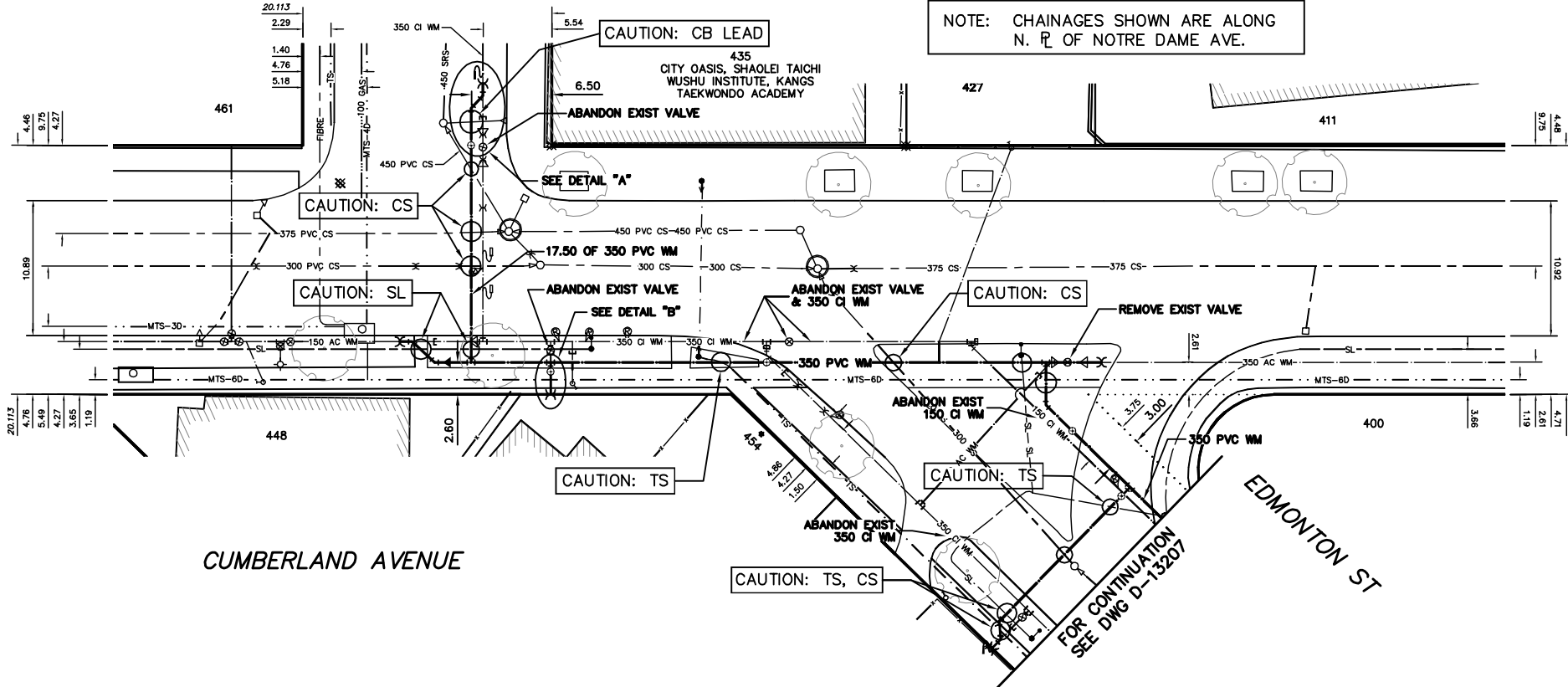


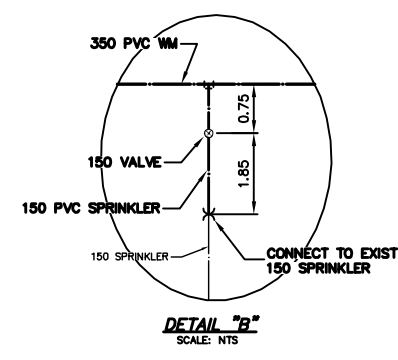
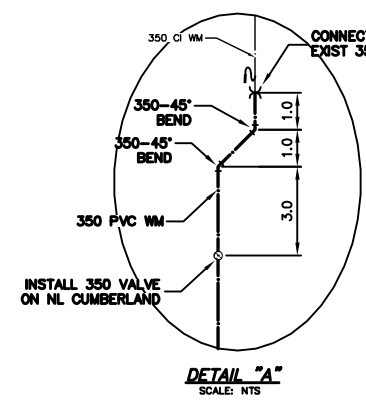
- 1+08.99 EXIST VALVE 300X150X150 TEE
- 1+09.50 EXIST VALVE
- 1+10.11 EXIST VALVE
- 1+13.54 EXIST HYDRANT VALVE
- 1+14.36 EXIST VALVE
- 1+16.334 W R EDMONTON
- 1+23.20 CONNECT TO EXIST 150 AC WM
- 1+24.20 INSTALL 150-45° BEND
- 1+24.00 INSTALL 150-45° BEND
- 1+23.00 INSTALL 300X150 REDUCER
- 1+26.95 300X350X350 TEE
- 1+28.15 EXIST REDUCER
- 1+28.71 EXIST REDUCER
- 1+35.37 ABANDON EXIST 350X350X150 TEE & INSTALL 350X150 TEE
- 1+35.447 E EDMONTON
- 1+50 W R EDMONTON
- 1+52.82 ABANDON EXIST 350X350X350 TEE & INSTALL 350 VALVE
- 1+54.85 ABANDON EXIST VALVE
- 1+65.25 EXIST 350X350X350 TEE
- 1+69.35 EXIST 350X350X150 TEE
- 1+69.87 EXIST PLUG
- 1+75.40 INSTALL 350X350X350 TEE
- 1+75.77 REMOVE EXIST BEND
- 1+76.14 REMOVE EXIST REDUCER
- 1+77.14 REMOVE EXIST VALVE
- 1+85.447 E EDMONTON (PROJECTED)
- 1+79.80 CONNECT TO EXIST 350 AC WM



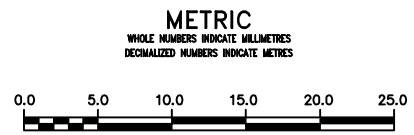
**WATER SERVICE INFORMATION**

ADDRESS	SIZE (mm) MATERIAL (STREET)	SIZE (mm) MATERIAL (PROP.)	SHORT & LONG MEASUREMENT	CORP. LOCATION	REMARKS
400 CUMBERLAND AVE PARK	-	-	-	-	-
427 CUMBERLAND AVE COMMERCIAL	25 COPPER	25 COPPER	5.09 WEL BLDG	5.9 E OF S/C	RECONNECT SERVICE
435 CUMBERLAND AVE COMMERCIAL	150 PVC	150 PVC	37.42 EEL EDMONTON		SERV. OFF EDMONTON
448 CUMBERLAND AVE COMMERCIAL	20 COPPER	20 LEAD	31.97 NNL CUMBERLAND	1.5 W OF S/C	OPP VALVE
461 CUMBERLAND AVE COMMERCIAL	150 PVC	150 PVC	6.90 EWL BLDG		OPP VALVE
454 EDMONTON ST COMMERCIAL	20 COPPER	20 LEAD	37.10 WML EDMONTON	0.2 W OF S/C	SERV. OFF CUMBERLAND
454 EDMONTON ST SPRINKLER	150	150	6.20 WML EDMONTON		RECONNECT SERVICE
			4.35 E OF NW CRN HSE		SERV. OFF CUMBERLAND
			12.95 WML EDMONTON		RENEW TO R/W 150 PVC
			2.51 E OF NW CRN HSE		OPP VALVE
			13.35 WML EDMONTON		

\* SERVICES TO BE RENEWED TO R. ALL OTHERS TO BE RECONNECTED



VALVES TO BE COUNTER-CLOCKWISE TO CLOSE (RED OPERATING NUT)



**WARNING**  
IF POWER EQUIPMENT OR EXPLOSIVES ARE TO BE USED FOR EXCAVATION ON THIS PROJECT THE CONTRACTOR MUST:  
1) NOTIFY THE GAS COMPANY OF THE PROPOSED LOCATION OF EXCAVATION.  
2) TAKE PRECAUTION TO AVOID DAMAGE TO GAS COMPANY INSTALLATIONS.  
SEE PROVINCIAL REGULATION 210/72 FOR DETAILS

**LOCATION APPROVED UNDERGROUND STRUCTURES**  
SUPV. U/G STRUCTURES COMMITTEE DATE  
NOTE: LOCATION OF UNDERGROUND STRUCTURES AS SHOWN ARE BASED ON THE BEST INFORMATION AVAILABLE BUT NO GUARANTEE IS GIVEN THAT ALL EXISTING UTILITIES ARE SHOWN OR THAT THE GIVEN LOCATIONS ARE EXACT. CONFIRMATION OF EXISTENCE AND EXACT LOCATION OF ALL SERVICES MUST BE OBTAINED FROM THE INDIVIDUAL UTILITIES BEFORE PROCEEDING WITH CONSTRUCTION.

NO.	REVISIONS	DATE	BY

DESIGNED BY	TS	CHECKED BY	SC
DRAWN BY	CJH	APPROVED BY	KZ
SCALE:	HORIZONTAL 1:250 VERTICAL 1:50		
DATE	2013 04 19	DATE	

ENGINEER'S SEAL  
ORIGINAL SIGNED BY K.R. ZUREK 13.04.19  
CONSULTANT DRAWING NUMBER

**THE CITY OF WINNIPEG**  
Winnipeg  
WATER AND WASTE DEPARTMENT  
ENGINEERING DIVISION  
2013 WATER RENEWALS  
CUMBERLAND AVENUE  
EDMONTON STREET TO  
25 E OF EDMONTON STREET  
SHEET 6 OF 10  
CITY DRAWING NUMBER  
D-13206