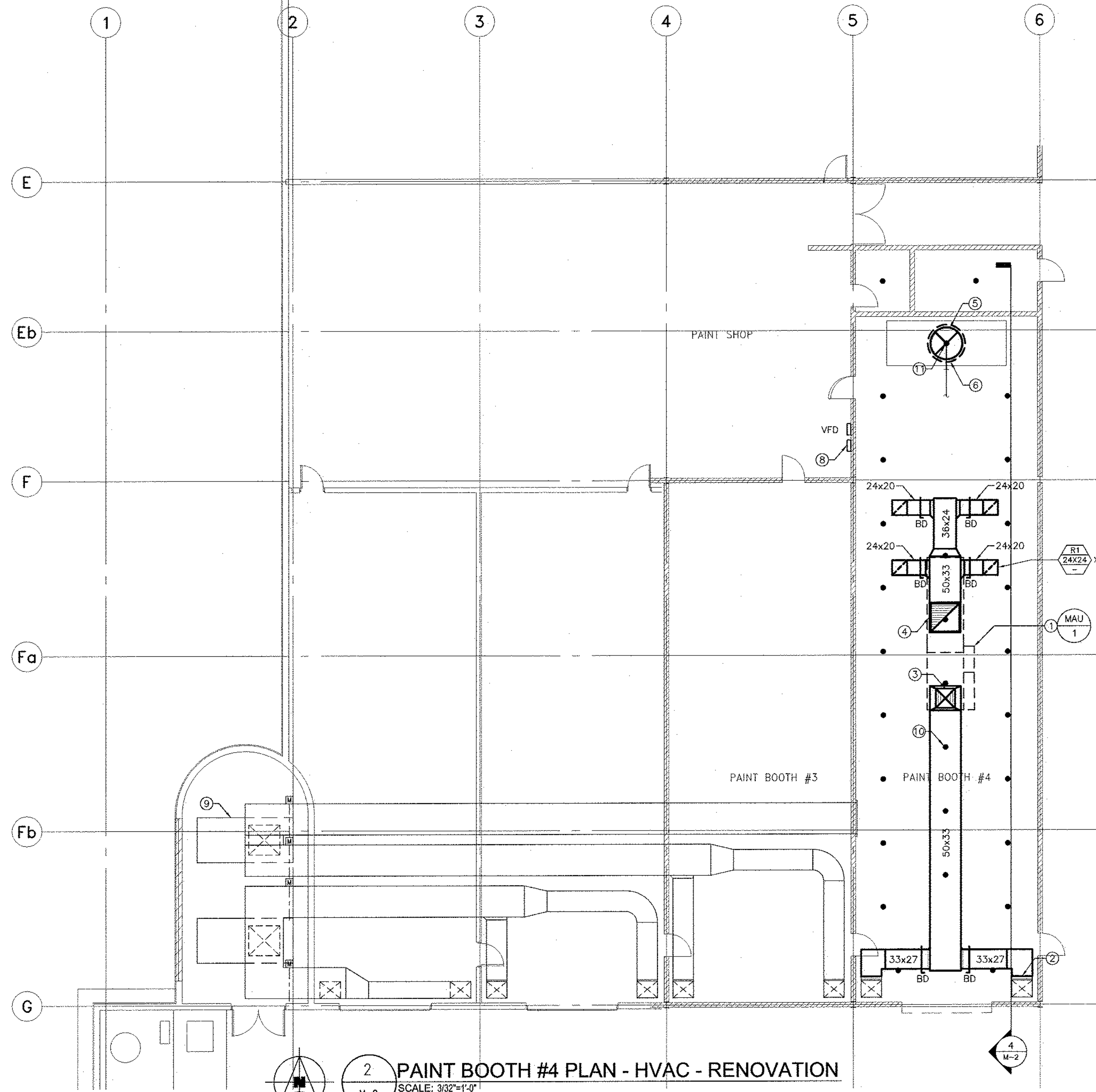
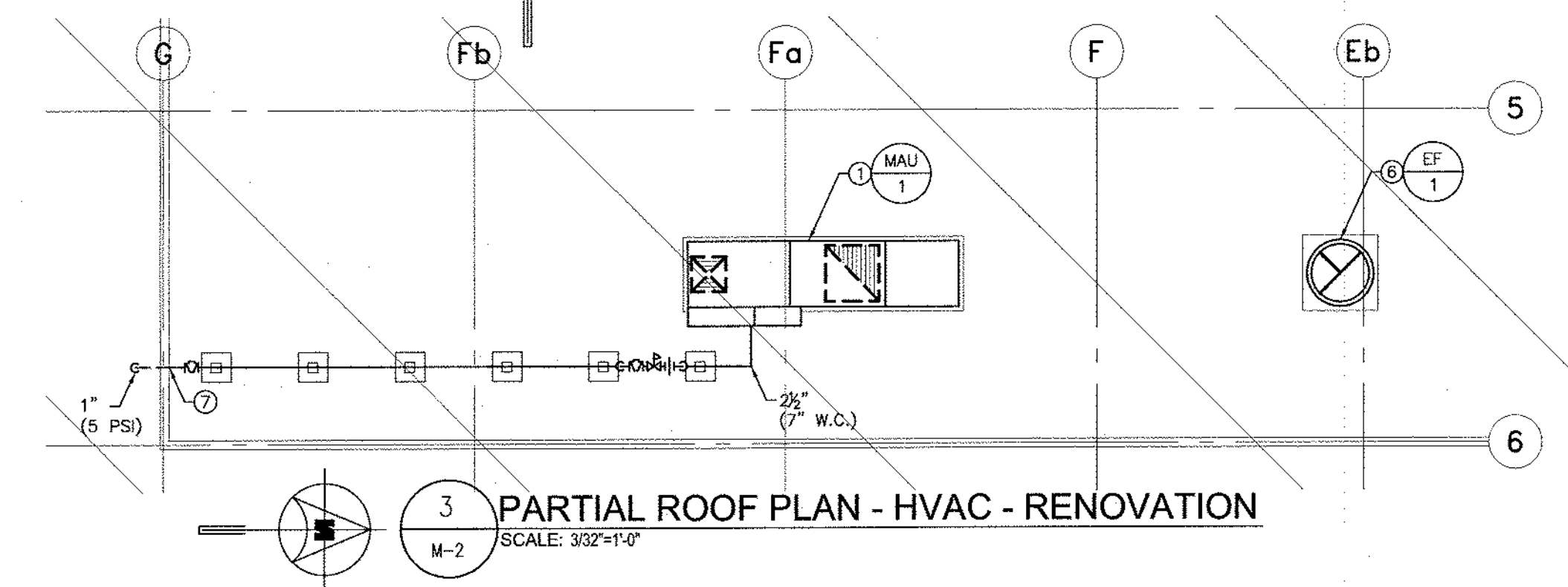


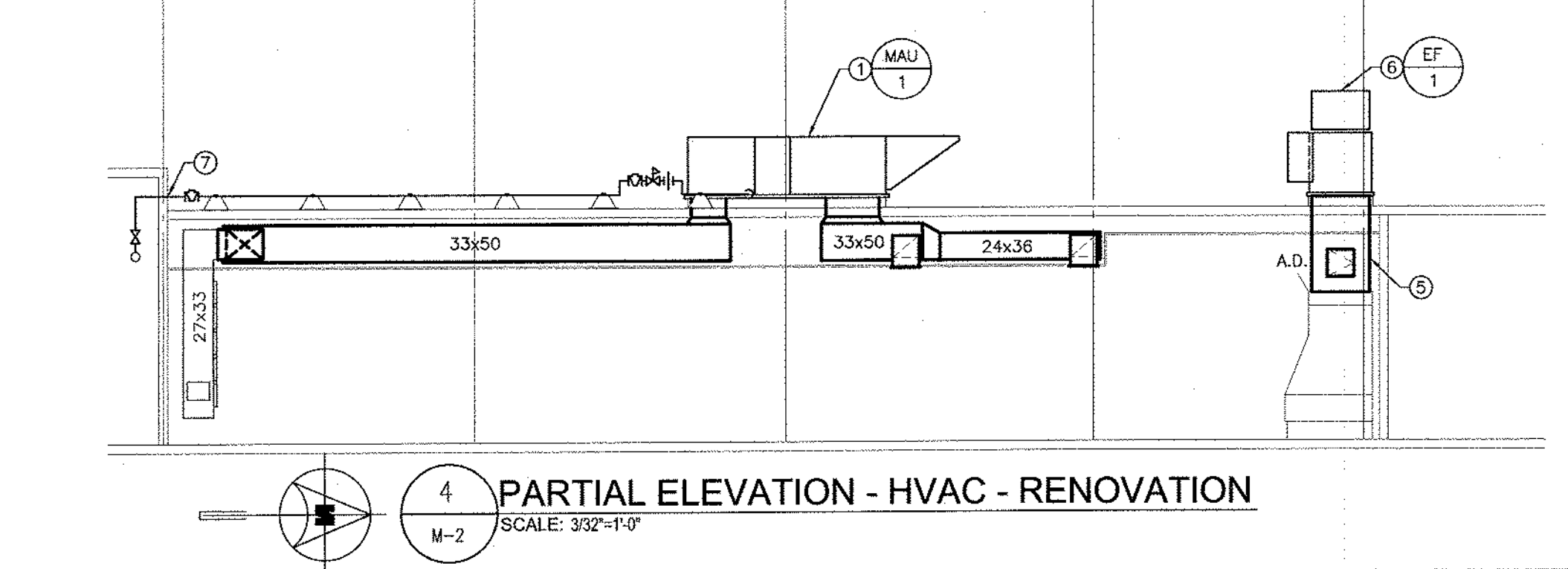
1 PAINT BOOTH #4 PLAN - HVAC - DEMOLITION  
M-2 SCALE: 3/32"=1'-0"



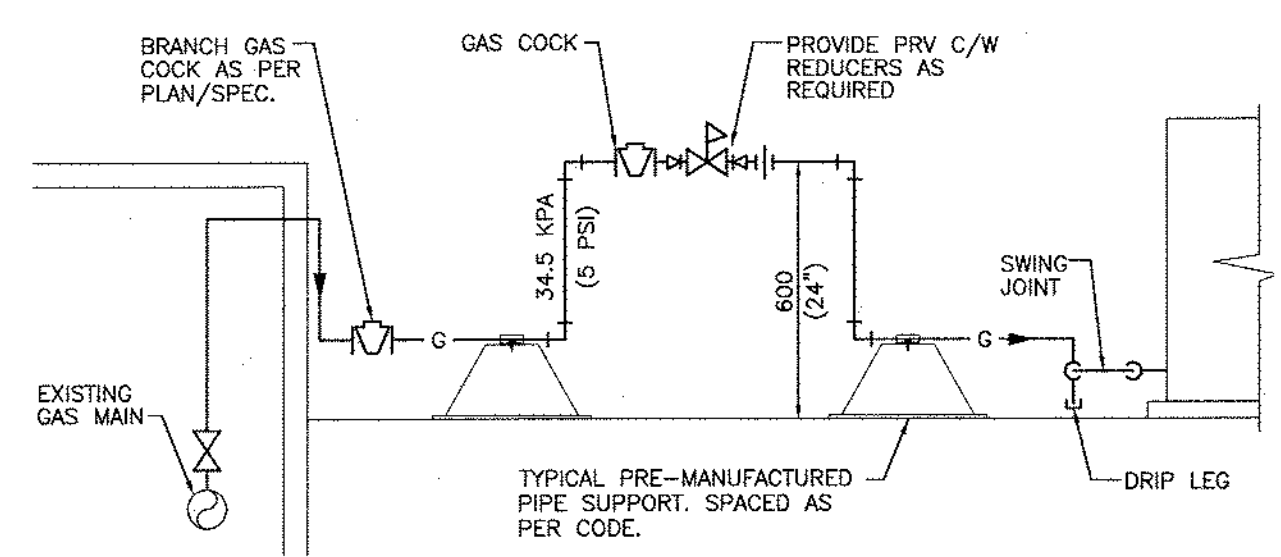
2 PAINT BOOTH #4 PLAN - HVAC - RENOVATION  
M-2 SCALE: 3/32"=1'-0"



3 PARTIAL ROOF PLAN - HVAC - RENOVATION  
M-2 SCALE: 3/32"=1'-0"

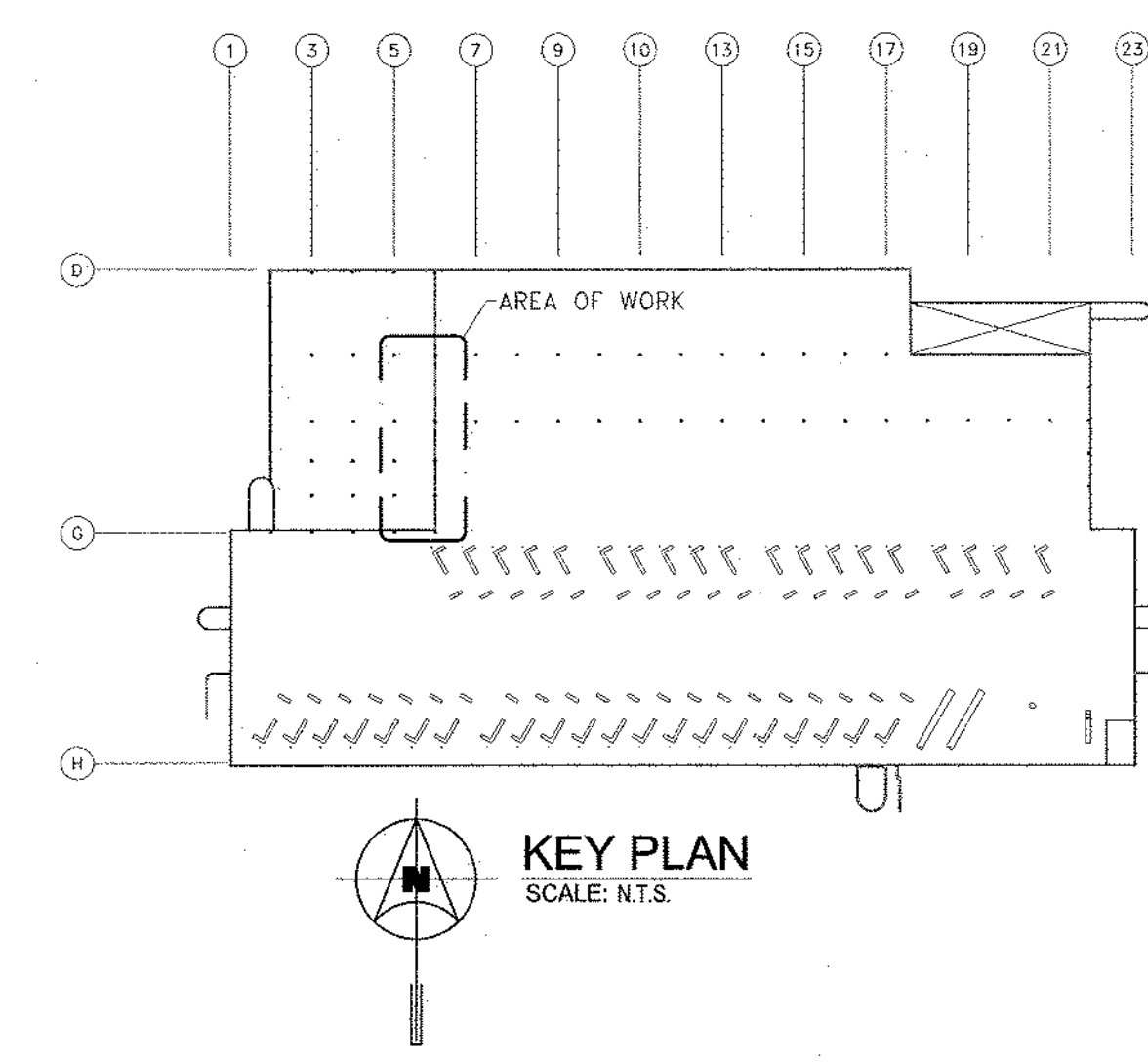


4 PARTIAL ELEVATION - HVAC - RENOVATION  
M-2 SCALE: 3/32"=1'-0"



5 TYPICAL PRV SNOW CLEARANCE  
M-2 SCALE: N.T.S.

HVAC LEGEND	
	EXISTING DUCTWORK TO BE REMOVED
	EXISTING DUCTWORK TO REMAIN
	MANUAL BALANCING DAMPER
	MOTORIZED DAMPER
	SINGLE LINE DUCT PLAN ELEVATION/SECTION
	SUPPLY/MAKE-UP/OUTSIDE/COMBUSTION AIR DUCT
	RETURN AIR DUCT
	EXHAUST/RELIEF AIR DUCT
	EQUIPMENT DESIGNATION
	GRILLE/DIFFUSER TYPE
	NECK SIZE
	QUANTITY OR NUMBER OF FLOW RATE (CFM OR L/S)
	FACE SIZE OR THROW
	GRILLE OR DIFFUSER DESIGNATION
	TAGS / NOTES DESIGNATION FOR HVAC DRAWINGS



KEY PLAN  
SCALE: N.T.S.

**GENERAL NOTES**

- A. REMOVE AND RE-INSTALL SPRINKLER HEADS AND BRANCH LINES, AS REQUIRED, TO ACCOMMODATE RENOVATIONS.
- B. PROVIDE 40" CLEARANCE FROM DOORWAYS TO CONTROL PANELS, ETC.

**DEMOLITION KEY NOTES**

1. CAP EXISTING DUCTWORK AND REMOVE PORTION, AS SHOWN.
2. DE-ENERGIZE EXISTING MOTORIZED DAMPER. REFER TO ELECTRICAL DRAWINGS.
3. REMOVE PORTION OF EXISTING DUCTWORK AND EXHAUST FAN BELOW ROOF.
4. REMOVE DISCHARGE PORTION OF EXHAUST DUCTWORK ON ROOF.
5. EXISTING SUPPLY AIR RISER TO REMAIN.
6. EXISTING SPRINKLER HEADS TO REMAIN. REFER TO GENERAL NOTES.
7. REMOVE EXISTING SPRINKLER HEAD INSIDE EXISTING EXHAUST DUCTWORK. CAP-OFF PIPING AS SHOWN.

**RENOVATION KEY NOTES**

1. OUTLINE OF NEW GAS-FIRED MAKE-UP AIR UNIT & MOUNTING BASE ON ROOF. REFER TO PARTIAL ROOF PLAN AND PARTIAL ELEVATION, THIS DRAWING. REFER TO SPECIFICATION. REFER TO ELECTRICAL DRAWINGS FOR WIRING.
2. CONNECT NEW SUPPLY DUCTWORK TO EXISTING 33"x27" RISERS.
3. NEW SUPPLY DUCT UP THRU ROOF TO NEW MAKE-UP AIR UNIT.
4. NEW RETURN AIR DUCT UP THRU ROOF TO NEW MAKE-UP AIR UNIT.
5. NEW EXHAUST DUCTWORK BELOW ROOF c/w ACCESS DOOR (24"x24"), INSULATION, AS REQUIRED. REFER TO PARTIAL ROOF PLAN AND PARTIAL ELEVATION, THIS DRAWING.
6. OUTLINE OF NEW INLINE CENTRIFUGAL UPBLAST EXHAUST FAN ON ROOF. REFER TO PARTIAL ROOF PLAN, THIS DRAWING. REFER TO SPECIFICATION. REFER TO ELECTRICAL DRAWINGS FOR WIRING.
7. 1" (5 PSI) GAS LINE THRU VERTICAL WALL ON ROOF. REFER TO DRAWING M-1 FOR CONTINUATION.
8. REMOTE, FACTORY SUPPLIED CONTROL PANEL, SERVING NEW MAKE-UP AIR UNIT AND EXHAUST FAN. REFER TO ELECTRICAL DRAWINGS FOR WIRING.
9. OWNER TO MODIFY EXISTING MAKE-UP AIR UNIT TO 50% OF IT'S CAPACITY.
10. EXISTING SPRINKLER HEADS TO REMAIN. REFER TO GENERAL NOTES.
11. PROVIDE AND INSTALL STANDARD DRY PENDENT SPRINKLER HEAD IN EXHAUST STACK.

NO.	Revisions	BY	DD/MM/YY
0	ISSUED FOR BID OPPORTUNITY	XW	12/04/13
-	ISSUED FOR CLIENT REVIEW	XW	25/03/13
-	ISSUED FOR COORDINATION	XW	22/03/13

**APEGM**  
Certificate of Authorization  
SMS Engineering Ltd.  
No. 166 Expiry: April 30, 2019

PROVINCE OF MANITOBA  
REGISTERED PROFESSIONAL ENGINEER  
X W U  
Member  
30166

**SMS ENGINEERING**  
SMS Engineering Ltd. Consulting Engineers  
770 Brandon Street Winnipeg MB Canada R3M 0K5  
Telephone 204.775.0291 Fax 204.772.2153  
sms@smseng.com

Project Title  
CITY OF WINNIPEG  
TRANSIT GARAGE PAINT BOOTH #4  
MAKE-UP AIR UNIT REPLACEMENT  
WINNIPEG MANITOBA

Drawing Title  
PARTIAL FLOOR PLAN  
HVAC  
DEMOLITION & RENOVATION

Drawn By	Checked By	Approved By
JD	XW	PG
Scale	Date	Project No.
AS NOTED	APR. 2013	13-064-01
Revision Number	Drawing Number	Sheet Order
0	M-2	2 OF 2

13064\_M-2\_JIP\_1\_LDWG - APRIL 10, 2013 - 1:08PM CST - JDDG