

KEY NOTES

1. WIRE AND CONNECT NEW 20HP, 600V/3φ PACKAGED MAKE-UP AIR UNIT WITH MINIMUM 3/8" IN CONDUIT. PROVIDE WEATHERPROOF DISCONNECT. PROVIDE NEW 60A-3P BREAKER IN EXISTING PANEL PP-UU. UPDATE LAMACOID UPON COMPLETION.
2. PROVIDE AND INSTALL WET LOCATION GFI RECEPTACLE FOR MAKE-UP AIR UNIT. PROVIDE 20A-1P BREAKER IN PANEL PBL CCT 35. REFER TO CEC SECTION 26-702 AND 26-704 FOR RECEPTACLE DETAILS, MOUNTING ETC. UPDATE LAMACOID UPON COMPLETION.
3. PROVIDE AND INSTALL WET LOCATION GFI RECEPTACLE FOR EXHAUST FAN. PROVIDE 20A-1P BREAKER IN PANEL PBL CCT 36. REFER TO CEC SECTION 26-702 AND 26-704 FOR RECEPTACLE DETAILS, MOUNTING ETC. UPDATE LAMACOID UPON COMPLETION.
4. WIRE AND CONNECT NEW 15HP, 600V/3φ EXHAUST FAN WITH MINIMUM 3/8" RW90 TO VFD AND TECK DRIVE RX FROM VFD TO MOTOR. PROVIDE WEATHERPROOF DISCONNECT. PROVIDE NEW 40A-3P BREAKER IN EXISTING MCC-TT. RE-USE SPACE COMPARTMENT THAT WAS MADE AVAILABLE DURING THE DEMOLITION OF EXHAUST FAN STARTER.
5. DISCONNECT AND REMOVE LIGHT FIXTURES THAT INTERFERE WITH INSTALLATION OF DUCTWORK. COORDINATE WITH OTHER TRADES. RE-INSTALL FIXTURES WHEN COMPLETE. WIRE USING RIGID THREADED CONDUIT, EXPLOSION PROOF BOXES AND FITTINGS. REFER TO CEC 18-106.
6. SUPPLY, WIRE AND INSTALL SINGLE POLE CONTACTOR IN EXISTING FIRE ALARM CONTACTOR ENCLOSURE. CONTACTOR TO OPEN IN THE EVENT OF FIRE ALARM AND SHUTDOWN MAKE-UP AIR UNIT.
7. ALL EQUIPMENT TO BE LOCATED GREATER THAN 1M FROM PAINT ROOM DOOR OR OPENINGS AS PER CEC. DIAGRAM JD-10.
8. 11 RUNS OF 2#12 IN CONDUIT. SEE MUA UNIT DIAGRAM IN SPECIFICATION FOR FURTHER DETAILS.
9. 4 RUNS OF 2c#12 SHIELDED CONDUCTORS IN CONDUIT. SEE MUA UNIT DIAGRAM IN SPECIFICATION FOR FURTHER DETAILS.
10. 6-POLE CONTACTOR TO REPLACE EXISTING LIGHT SWITCHES. WIRE TO SWITCH IN MUA UNIT CONTROL PANEL. SEE WIRING DIAGRAM IN SPECIFICATION.
11. INTERLOCK EXHAUST FAN WITH MUA UNIT.
12. AREA 1M IN ALL DIRECTIONS OF EDGES TO DOORS IS CLASSIFIED CLASS 1, DIV. 2 HAZARDOUS LOCATIONS. DO NOT INSTALL ANY ELECTRICAL EQUIPMENT AROUND THESE AREAS UNLESS SUITABLE FOR THIS ENVIRONMENT.
13. RETROFIT NEW 40A-3P BREAKER INTO EXISTING MCC.
14. MAKE ALL NECESSARY WIRING CONNECTIONS BETWEEN MAU, CONTROL PANEL AND ALL AUXILIARY DEVICES SUCH AS SPRAY GUN.
15. CONNECTORS AT ROOF TOP UNITS TO BE EXPLOSION PROOF. LOCATE DISCONNECTS GREATER THAN 3M FROM UNITS AND INTERCONNECT WITH TECK OR TECK DRIVE RX.
16. SEAL ANY CONDUITS ENTERING OR LEAVING THE PAINT BOOTH. USE PROPRIETARY EXPLOSION PROOF FITTINGS FOR SEALING.
17. DISCONNECT, REROUTE, EXTEND WIRE AND CONDUITS IF NECESSARY ANY ELECTRICAL EQUIPMENT THAT INTERFERE WITH THE INSTALLATION OF THE BEAM. CO-ORDINATE WITH ARCHITECT AND STRUCTURAL.

GENERAL NOTES

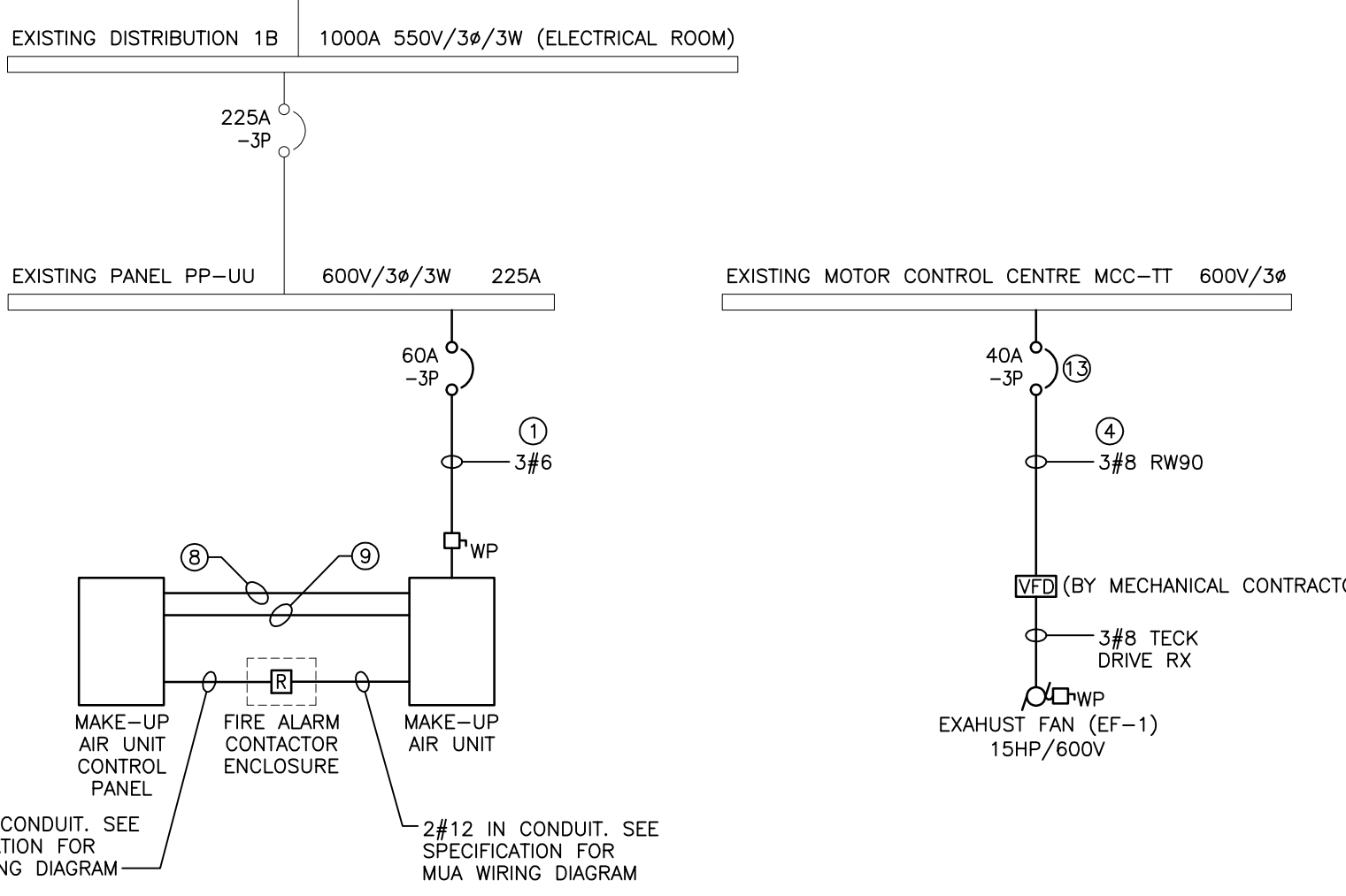
- A. ELECTRICAL SUB-CONTRACTOR TO VISIT SITE DURING BID AND VERIFY ALL EXISTING SERVICES ON SITE PRIOR TO SUBMITTING BID. REPORT ANY DISCREPANCIES TO CONTRACT ADMINISTRATOR DURING BID PERIOD.
- B. ELECTRICAL SUB-CONTRACTOR SHALL ENSURE COORDINATION BETWEEN ALL TRADES AND CONTRACT ADMINISTRATOR, ON AND OFF SITE, AS REQUIRED FOR INSTALLATION OF ELECTRICAL EQUIPMENT.
- C. ANY PENETRATION THROUGH ROOF INTO PAINT BOOTH, ELECTRICAL INSTALLATION MUST CONFIRM WITH SECTION 18 "HAZARDOUS LOCATIONS" OF THE CANADIAN ELECTRICAL CODE.
- D. CO-ORDINATE WITH CITY OF WINNIPEG FOR CONDUIT ROUTES.
- E. WIRING DIAGRAM IS TYPICAL. COORDINATE WITH MUA UNIT SUPPLIER ON SITE.

0	ISSUED FOR BID OPPORTUNITY	DF	12/04/13
-	ISSUED FOR CLIENT REVIEW	DF	25/03/13
-	ISSUED FOR COORDINATION	DF	22/03/13
NO.	Revisions	BY	DD/MM/YY

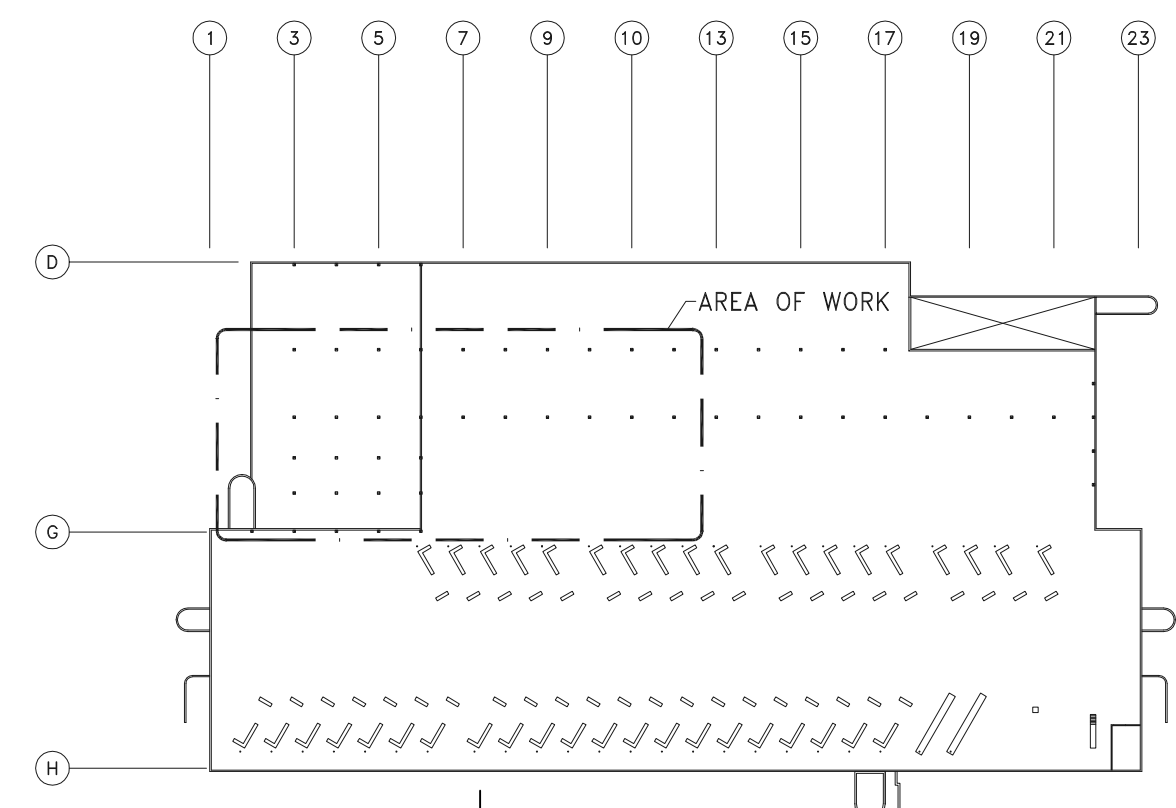


SMS ENGINEERING
 SMS Engineering Ltd. Consulting Engineers
 770 Bradford Street Winnipeg MB Canada R3H 0K3
 Telephone: 204.775.0291 Fax: 204.772.2153
 sms@smseng.com

1 PARTIAL FLOOR PLAN - ELECTRICAL - RENOVATION
 SCALE: 3/32"=1'-0"



2 SINGLE LINE DIAGRAM
 SCALE: N.T.S.



KEY PLAN
 SCALE: N.T.S.

Project Title
**CITY OF WINNIPEG
 TRANSIT GARAGE PAINT BOOTH #4
 MAKE-UP AIR UNIT REPLACEMENT**
 WINNIPEG MANITOBA

**PARTIAL FLOOR PLAN
 ELECTRICAL
 RENOVATION**

Drawn By GB	Checked By DF	Approved By GH
Scale AS NOTED	Date APR. 2013	Project No. 13-064-01
Revision Number 0	Drawing Number E-2	Sheet Order 2 OF 2