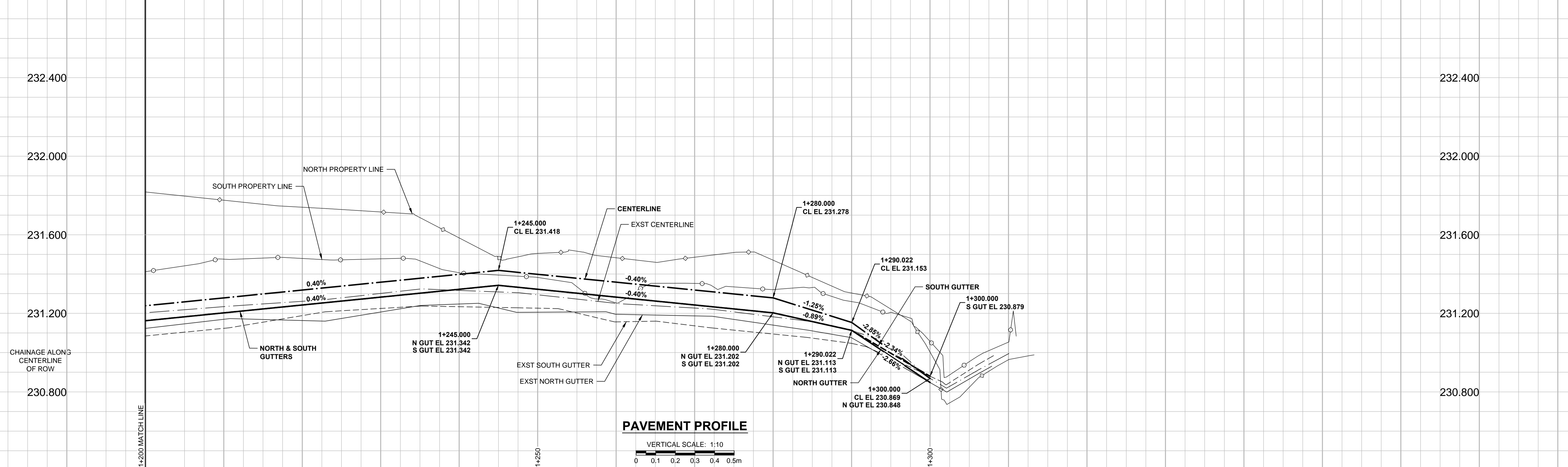
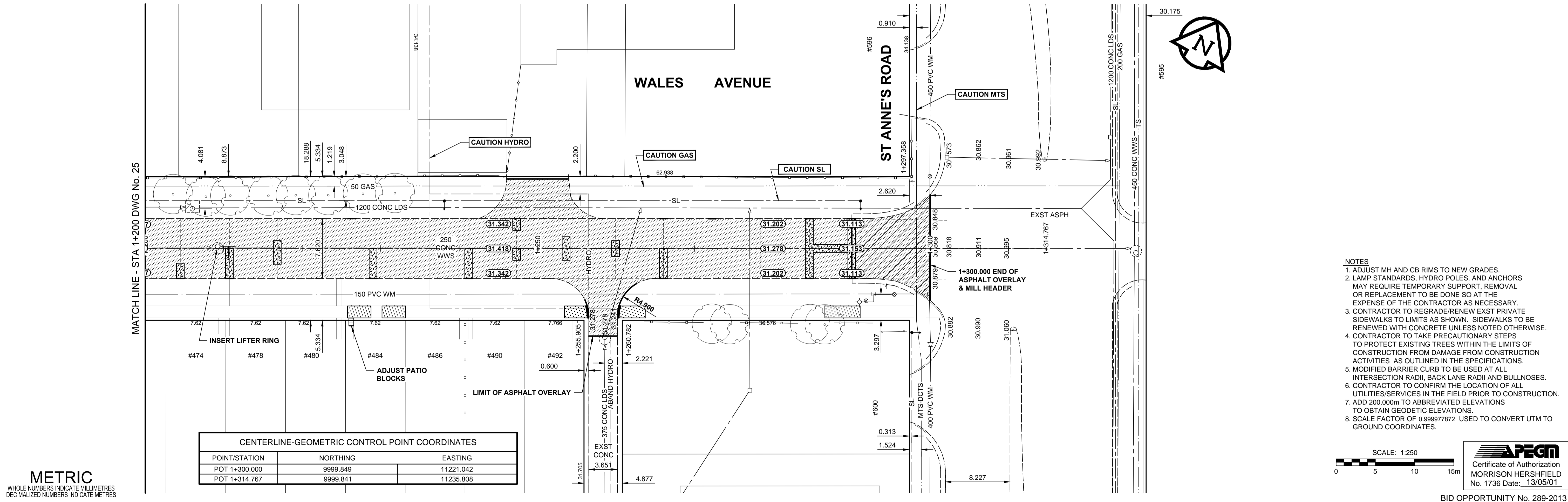


A1 SIZE 894mm x 841mm



PLOT: 13/05/01 11:20:51 AM



- NOTES**
1. ADJUST MH AND CB RIMS TO NEW GRADES.
 2. LAMP STANDARDS, HYDRO POLES, AND ANCHORS MAY REQUIRE TEMPORARY SUPPORT, REMOVAL OR REPLACEMENT TO BE DONE SO AT THE EXPENSE OF THE CONTRACTOR AS NECESSARY.
 3. CONTRACTOR TO REGRADE/RENEW EXST PRIVATE SIDEWALKS TO LIMITS AS SHOWN. SIDEWALKS TO BE RENEWED WITH CONCRETE UNLESS NOTED OTHERWISE.
 4. CONTRACTOR TO TAKE PRECAUTIONARY STEPS TO PROTECT EXISTING TREES WITHIN THE LIMITS OF CONSTRUCTION FROM DAMAGE FROM CONSTRUCTION ACTIVITIES AS OUTLINED IN THE SPECIFICATIONS.
 5. MODIFIED BARRIER CURB TO BE USED AT ALL INTERSECTION RADII, BACK LANE RADII AND BULLNOSES.
 6. CONTRACTOR TO CONFIRM THE LOCATION OF ALL UTILITIES/SERVICES IN THE FIELD PRIOR TO CONSTRUCTION.
 7. ADD 200.000m TO ABBREVIATED ELEVATIONS TO OBTAIN GEODETIC ELEVATIONS.
 8. SCALE FACTOR OF 0.99997872 USED TO CONVERT UTM TO GROUND COORDINATES.

CENTERLINE-GEOMETRIC CONTROL POINT COORDINATES

POINT/STATION	NORTHING	EASTING
POT 1+300.000	9999.849	11221.042
POT 1+314.767	9999.841	11235.808

METRIC
WHOLE NUMBERS INDICATE MILLIMETRES
DECIMALIZED NUMBERS INDICATE METRES

SCALE: 1:250

APEGM
Certificate of Authorization
MORRISON HERSHFIELD
No. 1736 Date: 13/05/01

EXISTING	LEGEND - PLAN	NEW	EXISTING	LEGEND - PLAN	NEW	EXISTING	LEGEND - PLAN	NEW	
	GAS		MANHOLE		CONCRETE PAVEMENT		LOCATION APPROVED		GBM 62-010
	MTS		CATCH BASIN / CATCH PIT		CONC SIDEWALK / MEDIAN		UNDERGROUND STRUCTURES		ELEV 232.975m
	HYDRO		CURB INLET WITH BOX		ASPHALT PAVEMENT		SUPR. U/G STRUCTURES		DATE
	CATV / FIBRE OPTIC		TREE		PAVING STONE		COMMITTEE		NOTE:
	TRAFFIC SIGNALS / PIT		TEST HOLE		GRAVEL		LOCATION OF UNDERGROUND STRUCTURES		AS SHOWN ARE BASED ON THE BEST INFORMATION AVAILABLE. BUT NO
	LAND DRAINAGE SEWER		PROPERTY LINE		RAMP CURB		GUARANTEE IS GIVEN THAT ALL EXISTING		LOCATIONS ARE SHOWN OR THAT THE GIVEN
	SANITARY/COMBINED SEWER		SURVEY BAR		PLANING / REMOVAL		EXISTENCE AND EXACT LOCATION OF ALL		SERVICES MUST BE OBTAINED FROM THE
	SEWER SERV/DRAINAGE CONN		FENCE		LEGEND		INDIVIDUAL UTILITIES BEFORE PROCEEDING		WITH CONSTRUCTION.
	WATERMAIN		BOC / EDGE OF PAVEMENT		LEGEND		CONSTRUCTION.		CONSTRUCTION.
	SUBDRAIN		ELEVATION		LEGEND		CONSTRUCTION.		CONSTRUCTION.
	DITCH		TRAFFIC SIGN		LEGEND		CONSTRUCTION.		CONSTRUCTION.

LOCATION APPROVED
UNDERGROUND STRUCTURES

SUPR. U/G STRUCTURES DATE COMMITTEE

NOTE:
LOCATION OF UNDERGROUND STRUCTURES AS SHOWN ARE BASED ON THE BEST INFORMATION AVAILABLE. BUT NO GUARANTEE IS GIVEN THAT ALL EXISTING UTILITIES ARE SHOWN OR THAT THE GIVEN LOCATIONS ARE EXACT. CONFIRMATION OF EXISTENCE AND EXACT LOCATION OF ALL SERVICES MUST BE OBTAINED FROM THE INDIVIDUAL UTILITIES BEFORE PROCEEDING WITH CONSTRUCTION.

No.	ISSUED FOR CONSTRUCTION	13/05/01	JGK
0	ISSUED FOR CONSTRUCTION	13/05/01	JGK
No.	REVISIONS	YYMMDDI	BY

MORRISON HERSHFIELD

DESIGNED BY: JGK
CHECKED BY: RPB

DRAWN BY: DID/DML
APPROVED BY: BWB

HOR. SCALE: 1:250
VERT. SCALE: 1:10

DATE: 13/05/24

RELEASED FOR CONSTRUCTION

DATE: MAY 13

PROFESSIONAL'S SEAL

PROVINCE OF MANITOBA
REGISTERED PROFESSIONAL ENGINEER

J.G. KENNEDY
Member
22326
MAY 13

CONSULTANT DRAWING No.
W130003-T-026_RX.dwg

THE CITY OF WINNIPEG
PUBLIC WORKS DEPARTMENT
ENGINEERING DIVISION

2013 LOCAL STREET PACKAGE
WALES AVENUE
DAKOTA STREET TO ST ANNE'S ROAD
PAVEMENT REHABILITATION
HORIZONTAL AND VERTICAL ALIGNMENT
STA 1+200 TO STA 1+300

CITY DRAWING NUMBER: N/A
SHEET 26 OF 26
DRAWING No. 26
REV 0

BID OPPORTUNITY No. 289-2013