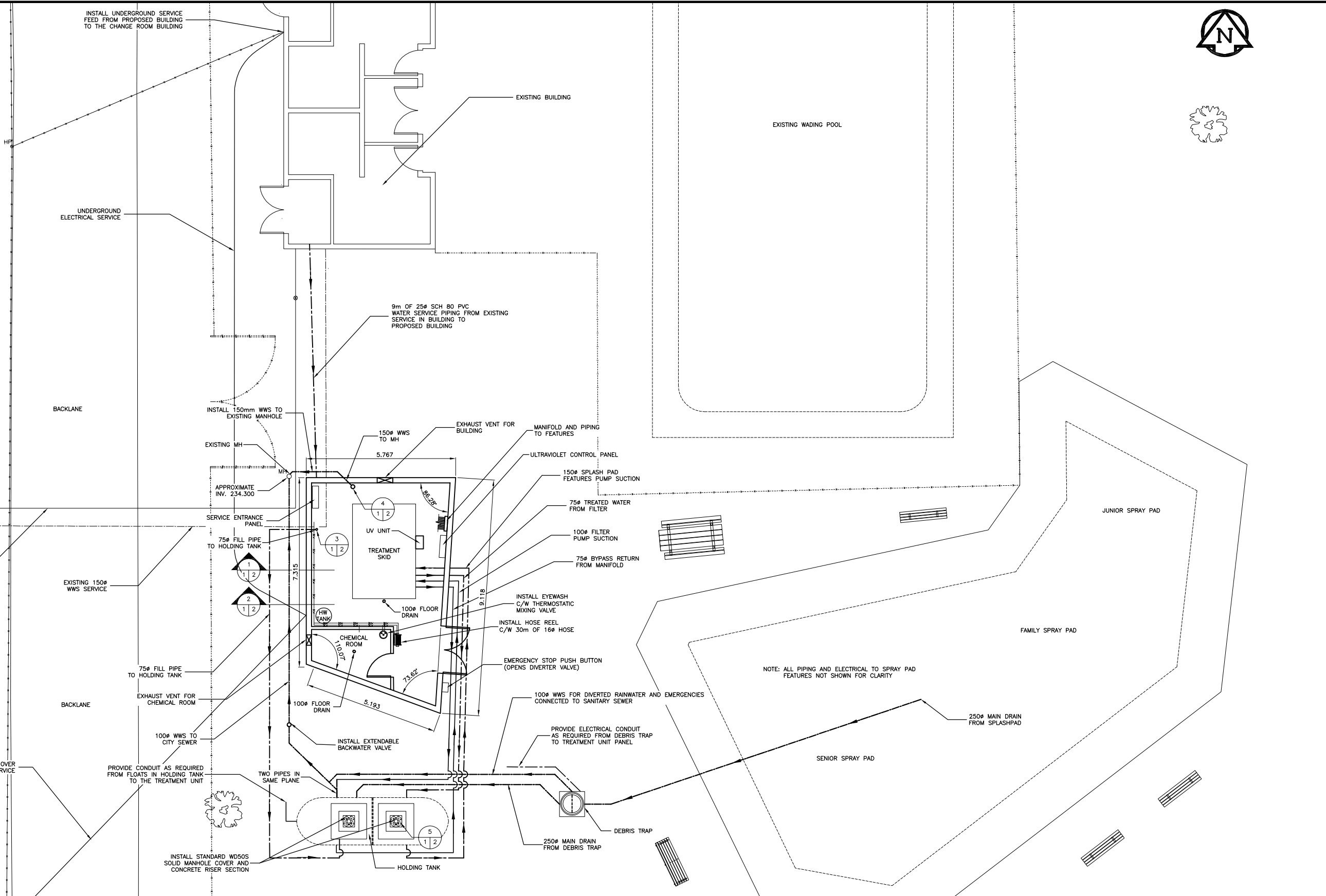


NEW BUILDING CORNER COORDINATES

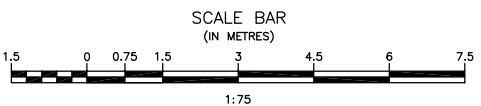
BUILDING CORNER	NORTHING	EASTING
NW CORNER	5526317.3174	624968.0377
NE CORNER	5526317.1339	624973.5020
SE CORNER	5526308.0596	624972.6061
SW CORNER	5526310.0065	624967.7922

- ROOF CONSTRUCTION**
- ICE RAKES
 - 24 GAUGE STEEL ROOF PANELS
 - 51mm HAT BARS (FILL HAT BARS/VOID WITH BATT INSULATION)
 - MIN. R-44 FIBERGLASS INSULATION
 - 305mm THERMAL HAT CLIPS
 - CEILING PANELS

- WALL CONSTRUCTION**
- 190mm CONCRETE MASONARY BLOCK
 - 13mm AIR GAP
 - 150mm STEEL STUD (18 GAUGE)
 - R-20 FIBERGLASS INSULATION
 - 6 MIL POLY VAPOUR BARRIER
 - 13mm DRYWALL
 - 1 COAT OF PRIMER AND TWO COATS OF PAINT, COLOR OF OWNERS CHOICE.



NOTE: ALL PIPING AND FITTINGS PVC SCH 40 UNLESS OTHERWISE NOTED



No.	REVISIONS	DATE	INITIALS
1	ISSUED FOR TENDER	13/02/26	

B.M. E.L.
TOP NUT OF FH ON BOULEVARD IN FRONT OF LOT 7 ON ANSLIE ST. ELEV. 237.532 N. 5526296.9874 E. 624918.9064

LOCATIONS OF UNDERGROUND STRUCTURES/UTILITIES AS SHOWN ARE BASED ON AVAILABLE INFORMATION BUT NO GUARANTEE IS GIVEN OR IMPLIED THAT ALL EXISTING UNDERGROUND STRUCTURES/UTILITIES ARE SHOWN OR THAT THE GIVEN LOCATIONS ARE EXACT. CONFIRMATION OF EXISTENCE AND EXACT LOCATION OF ALL UNDERGROUND STRUCTURES/UTILITIES MUST BE OBTAINED FROM THE APPROPRIATE AUTHORITY/OWNER, BY THE CONTRACTOR, BEFORE PROCEEDING WITH CONSTRUCTION.

ENGINEER'S SEAL



J. R. Cousin Consultants Ltd.
Consulting Engineers and Project Managers

91A Scurfield Blvd. Winnipeg, MB R3Y 1G4
ph: (204) 489-0474 fax: (204) 489-0487
email: info@jrcc.ca website: www.jrcc.ca

Engineering Excellence since 1981

CODE: D-661.01	PROJECT: STURGEON HEIGHTS CC SPRAY PAD
DESIGNED BY: RO	TITLE: BUILDING AND SERVICE LINE PIPING LAYOUT
DRAWN BY: RO	SCALE: 1:75
REVIEWED BY: TL	DATE: 13/02/26
	PLAN: M1
	SHEET: 1 of 2

Mar 25, 2013 11:02:28 AM User: D:\spencer\lambert\06101\01 Sturgeon Heights CC - 06101.dwg Plot: 06101.dwg Plotter: HP DesignJet 5000 Series Plotter