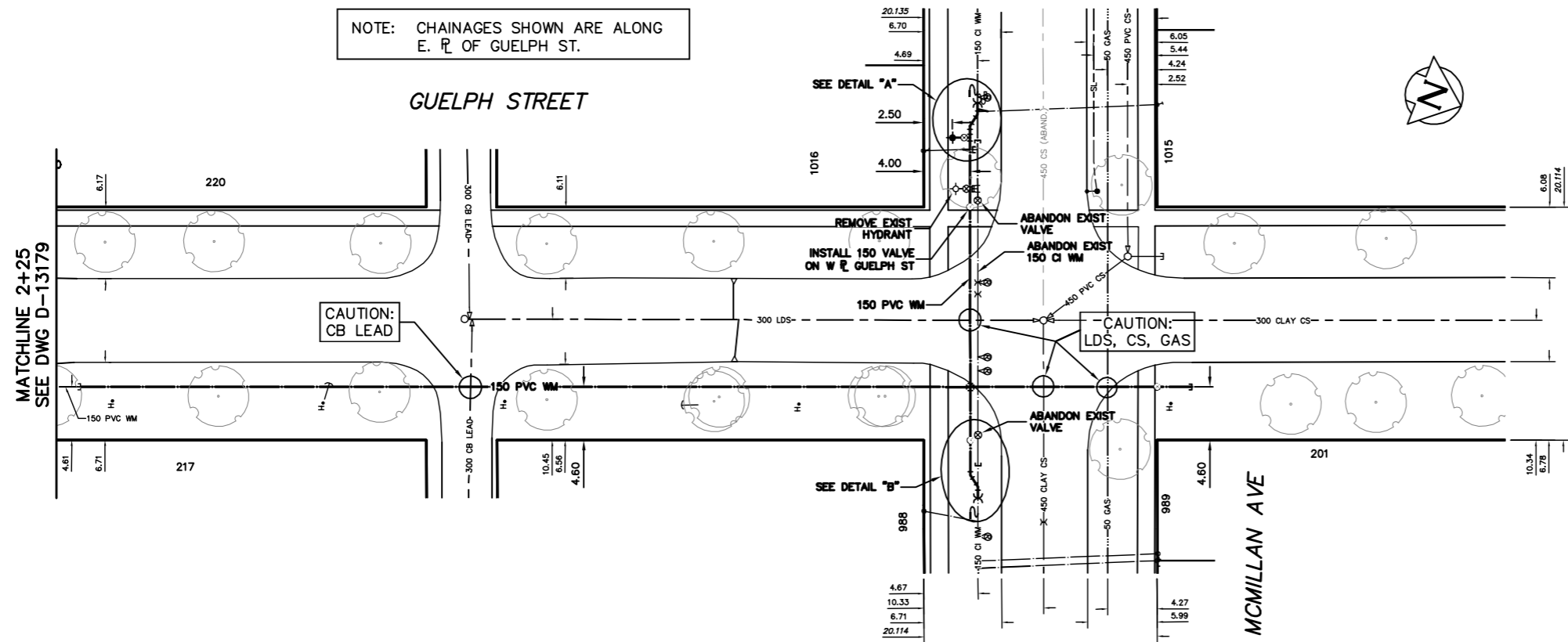


NOTE: CHAINAGES SHOWN ARE ALONG E. R. OF GUELPH ST.

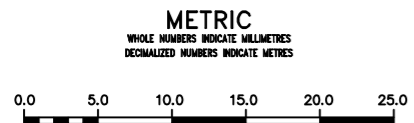


**WATER SERVICE INFORMATION**

| ADDRESS           | SIZE (mm) MATERIAL (STREET) | SIZE (mm) MATERIAL (PROP.) | SHORT & LONG MEASUREMENT | CORP. LOCATION | REMARKS           |
|-------------------|-----------------------------|----------------------------|--------------------------|----------------|-------------------|
| 217 GUELPH ST     | 25 COPPER                   | 25 COPPER                  | 3.47 WEL HSE             | OPP S/C        | SERV. OFF CORYDON |
| 220 GUELPH ST     | 25 COPPER                   | 25 COPPER                  | 11.40 EEL GUELPH         | OPP S/C        | SERV. OFF CORYDON |
| 988 MCMILLAN AVE  | 20 COPPER                   | 12 COPPER                  | 2.16 WEL BLDG            | OPP S/C        | -                 |
| 988 MCMILLAN AVE  | 20 COPPER                   | 20 COPPER                  | 3.59 WML GUELPH          | OPP S/C        | -                 |
| 1015 MCMILLAN AVE | 20 COPPER                   | 20 COPPER                  | 8.92 WEL HSE             | 0.9 E OF S/C   | -                 |
| 988 MCMILLAN AVE  | 20 COPPER                   | 20 COPPER                  | 6.06 EEL GUELPH          | 0.7 E OF S/C   | -                 |
| 1015 MCMILLAN AVE | 20 COPPER                   | 20 COPPER                  | 9.72 EEL GUELPH          | 0.5 E OF S/C   | RECONNECT SERVICE |
| 1015 MCMILLAN AVE | 20 COPPER                   | 20 COPPER                  | 3.68 WEL HSE             | 0.5 E OF S/C   | RECONNECT SERVICE |
| 1015 MCMILLAN AVE | 20 COPPER                   | 20 COPPER                  | 8.75 WML GUELPH          | 0.1 W OF S/C   | RECONNECT SERVICE |
| 1015 MCMILLAN AVE | 20 COPPER                   | 20 COPPER                  | 2.65 WEL HSE             | -              | -                 |
| 1015 MCMILLAN AVE | 20 COPPER                   | 20 COPPER                  | 5.03 WML GUELPH          | -              | -                 |

\*SERVICES TO BE RENEWED TO R. ALL OTHERS TO BE RECONNECTED

VALVES TO BE COUNTER-CLOCKWISE TO CLOSE (RED OPERATING NUT)



**WARNING**  
IF POWER EQUIPMENT OR EXPLOSIVES ARE TO BE USED FOR EXCAVATION ON THIS PROJECT THE CONTRACTOR MUST:  
1) NOTIFY THE GAS COMPANY OF THE PROPOSED LOCATION OF EXCAVATION.  
2) TAKE PRECAUTION TO AVOID DAMAGE TO GAS COMPANY INSTALLATIONS.  
SEE PROVINCIAL REGULATION 210/72 FOR DETAILS

**LOCATION APPROVED UNDERGROUND STRUCTURES**  
SUPV. U/G STRUCTURES COMMITTEE DATE  
NOTE: LOCATION OF UNDERGROUND STRUCTURES AS SHOWN ARE BASED ON THE BEST INFORMATION AVAILABLE BUT NO GUARANTEE IS GIVEN THAT ALL EXISTING UTILITIES ARE SHOWN OR THAT THE GIVEN LOCATIONS ARE EXACT. CONFIRMATION OF EXISTENCE AND EXACT LOCATION OF ALL SERVICES MUST BE OBTAINED FROM THE INDIVIDUAL UTILITIES BEFORE PROCEEDING WITH CONSTRUCTION.

|  |           |
|--|-----------|
| B.M. ELEV.                               |           |
| CONSTRUCTION COMPLETION DATE: YYYY MM DD |           |
| NO.                                      | REVISIONS |
|  | DATE      |
|  | BY        |

|             |            |                           |          |
|-------------|------------|---------------------------|----------|
| DESIGNED BY | RD         | CHECKED BY                | SC       |
| DRAWN BY    | CJH        | APPROVED BY               | KZ       |
| SCALE:      |            | RELEASED FOR CONSTRUCTION |          |
| HORIZONTAL  | 1:250      | K.R. ZUREK                |          |
| VERTICAL    | 1:50       |                           |          |
| DATE        | 2013 04 09 | DATE                      | 13.04.09 |

ENGINEER'S SEAL  
**ORIGINAL SIGNED BY S.R.J. COURNOYER 13.04.08**  
CONSULTANT DRAWING NUMBER

**THE CITY OF WINNIPEG**  
Winnipeg  
WATER AND WASTE DEPARTMENT  
ENGINEERING DIVISION  
2013 WATER RENEWALS  
GUELPH STREET  
5 N OF CORYDON AVENUE TO  
MCMILLAN AVENUE

SHEET 7 OF 15  
CITY DRAWING NUMBER  
**D-13180**