

FILE NAME:

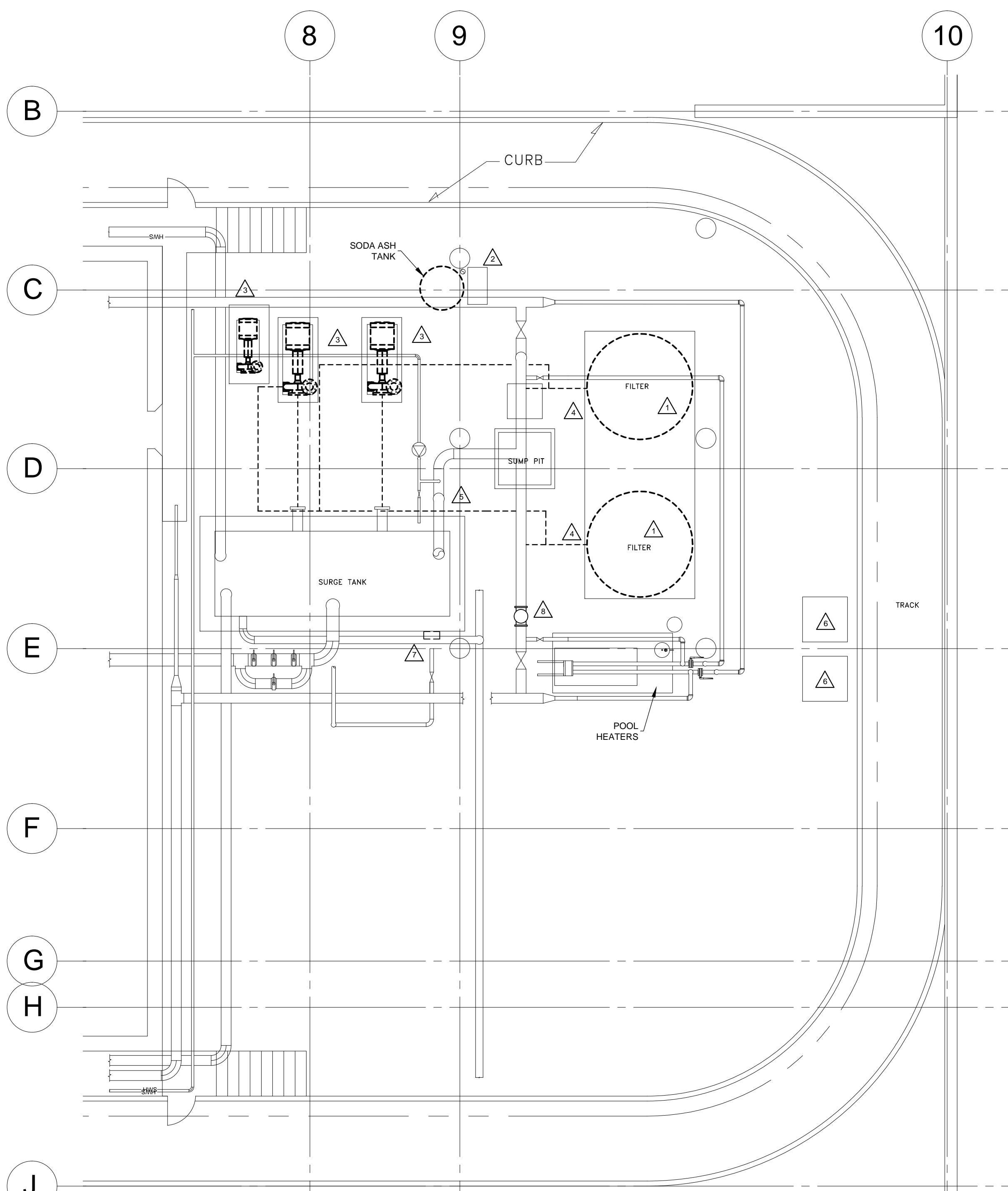
DATE: 2013.03.22

DESCRIPTION:

PROJECT No: 2012-140

ADDRESS: 999 SARGENT AVE.

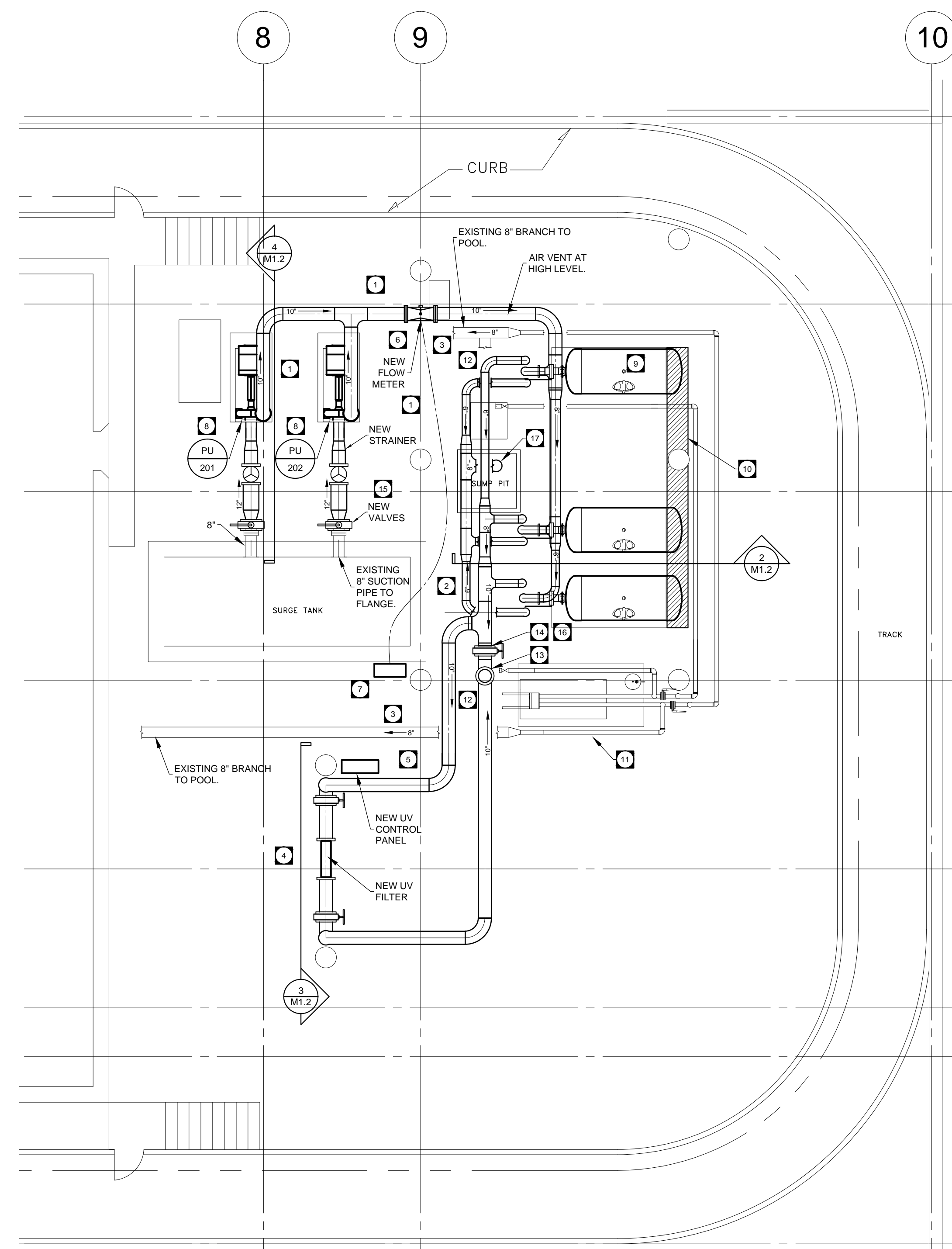
NOTES :



1 PARTIAL FLOOR PLAN - DEMOLITION
 M1.1 SCALE: 3/16" = 1' - 0"

DEMOLITION NOTES

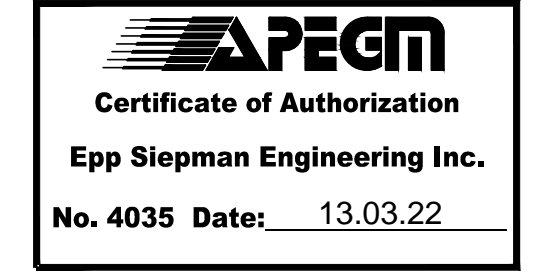
- REMOVE AND DISPOSE OF FILTER TANKS.
- REMOVE AND DISPOSE OF SODA ASH TANK, PUMP, AND ASSOCIATED PIPING.
- REMOVE AND DISPOSE OF THREE PUMPS. REMOVE PIPING AND RELATED EQUIPMENT ON THE PUMP SUCTION SIDE BACK TO THE FLANGE AT THE TANK. REMOVE THE CONCRETE EQUIPMENT PADS FOR THE BACKUP PUMP. PATCH AND REPAIR TO MAKE LEVEL WITH THE SURROUNDING FLOOR.
- REMOVE AND DISPOSE OF THE PIPING
 - BETWEEN THE PUMPS AND THE FILTERS.
 - BETWEEN THE FILTERS AND THE BACKWASH TANK.
 - BETWEEN THE FILTERS AND THE TEE CONNECTIONS AT THE MAIN POOL SUPPLY (HIGH LEVEL).
- REMOVE & DISPOSE OF EXISTING FLOW METER AND ASSOCIATED PIPING.
- REMOVE AND DISPOSE OF THE REFRIGERATION UNITS, PUMPS, AND RELATED POOL WATER PIPING BACK TO THE MAIN 8" POOL SUPPLY. REMOVE AND DISPOSE OF ANY REMAINING REFRIGERANTS. CAP THE BRANCH RUN-OUTS AT THE MAIN 8" POOL SUPPLY PIPE. REMOVE CONCRETE EQUIPMENT PADS. PATCH AND REPAIR TO MAKE LEVEL WITH THE SURROUNDING FLOOR.
- REMOVE & DISPOSE OF EXISTING FLOW ALARM CONTROLS.
- CUT EXISTING 8" MAIN AND INSTALL NEW 10" TEE. REDUCE EACH SIDE TO THE EXISTING 8" PIPE DOWN TO CONNECT TO NEW 10" POOL RETURN MAIN. REFER TO 2-M1.1.



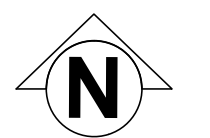
2 PARTIAL FLOOR PLAN - RENOVATION
 M1.1 SCALE: 3/16" = 1' - 0"

KEY NOTES

- NEW 10" PIPING FROM PUMPS TO FILTER TANKS AT APPROXIMATELY 10' ABOVE FINISHED FLOOR. NEW 10" PIPING FROM FILTER TANKS TO POOL RETURN TO RUN APPROXIMATELY 12' A.F.F.
- BACKWASH PIPING FROM FILTERS TO BACKWASH SUMP PIT TO RUN AT APPROXIMATELY 8' A.F.F. REFER TO SECTIONS AND SCHEMATIC.
- EXISTING CONNECTIONS TO THE 8" BRANCHES FROM EXISTING CHLORINE AND CO2 SYSTEMS TO REMAIN. CONNECTION TO MAIN POOL RETURN SHALL BE DOWNSTREAM FROM UV TAKEOFF AND CONNECTION TO BOILER RETURN.
- NEW UV SYSTEM. DROP PIPING FROM HIGH LEVEL DOWN TO UV FILTER AT APPROXIMATELY 48" ABOVE THE FLOOR. INSTALL UNISTRUT FRAME TO SUPPORT THE FILTER AND PIPING AT LOW LEVEL AND SECURE BACK TO THE CLOSEST STRUCTURAL COLUMN. ELECTRICAL DIVISION TO WIRE THE UV UNIT CONTROL PANEL AND TRANSFORMER TO POWER SUPPLY.
- INSTALL UV CONTROL PANEL ON UNISTRUT FRAME. SECURE FRAME TO COLUMN FOR LATERAL SUPPORT.
- NEW FLOW METER. MOUNT AT HIGH LEVEL. RUN CONTROL WIRING TO REMOTE READ-OUT PANEL.
- LOCATE NEW DIGITAL FLOW METER DISPLAY AS LOCATED.
- PUMPS TO OPERATE AS DUTY-STANDBY WITH MANUAL SWITCHOVER. ISOLATION VALVES FOR STANDBY PUMP TO BE IN NORMALLY CLOSED POSITION.
- NEW STACKED SAND FILTERS (6 FILTERS IN TOTAL). CW/FACE-PIPING LINKED VALVE ASSEMBLY. INSTALL ON EXISTING CONCRETE PAD. FILTERS SHALL BE BROUGHT INTO THE POOL MECHANICAL AREA IN ONE PIECE. COORDINATE LOCATION WITH CITY OF WINNIPEG PROJECT MANAGER.
- ALLOW FOR THE ADDITION OF APPROXIMATELY 16" TO THE BACK OF THE EXISTING CONCRETE PAD BELOW THE FILTERS. FULL LENGTH. NEW CONCRETE SHALL MATCH EXISTING ELEVATIONS. PADS SHALL BE COMPLETE WITH 10m REBAR AND 15 M DOWELS TO TIE INTO EXISTING PAD.
- EXISTING POOL HEATER SYSTEM SHALL REMAIN.
- USE EXISTING VALVES ON 8" MAIN AT HIGH LEVEL TO BALANCE FLOW RATE THROUGH THE HEATERS AND TO EQUALIZE FLOW TO EACH SIDE OF THE POOL.
- TEE OFF OF THE NEW 10" AFTER THE UV. RISE AND TEE INTO THE EXISTING 8" MAIN AT HIGHER LEVEL. TEE WITH A 10" X 10" X 10" TEE. FLOW SPLITS TO EACH SIDE OF THE POOL FROM HERE THROUGH THE EXISTING 8" PIPE DISTRIBUTION.
- NORMALLY CLOSED VALVE FOR FILTER BYPASS.
- INCREASE PIPE SIZE TO 12" AFTER THE NEW VALVE. RUN 12" TO THE 12" X 10" BASKET STRAINER, AND REDUCE TO 8" FOR THE PUMP INTAKE.
- CHAIN-OPERATED BUTTERFLY VALVE. CHAIN TO BE OPERABLE FROM FLOOR LEVEL. LOCATE CHAIN AWAY FROM EQUIPMENT AND WALKWAYS.
- DISCHARGE FILTER BACKWASH TO SUMP PIT.



epp siepman engineering inc.
 mechanical engineers
 3035-100 Osborne St. South Winnipeg, MB R3L 1Y5
 p 204.453.1080 f 204.453.1335 ese@eppsiepman.com



0	ISSUED FOR CONSTRUCTION	DE	13.03.22
NO.	REVISION/DESCRIPTION	BY	DATE
SEALS			

DRAWN BY [Signature] **CHECKED BY** [Signature] **APPROVED** [Signature]
 DATE 2013.03.22 USER APPROVAL
CITY OF WINNIPEG
 PLANNING, PROPERTY AND DEVELOPMENT DEPARTMENT
 MUNICIPAL ACCOMMODATIONS DIVISION
 185 KING ST., 4th FLOOR

PROJECT
 WATER TREATMENT
 PROCESS UPGRADES
 BID OPPORTUNITY # 237-2013
 999 SARGENT AVE.

SHEET TITLE
 MECHANICAL ROOM PLANS
 DEMOLITION AND RENOVATION

SCALE	PROJECT NO.	SHEET NO.
AS NOTED	2012-140	M1.1

DRAWING SHEET SIZE: A1 (841mm x 594mm) PLOT 1:1