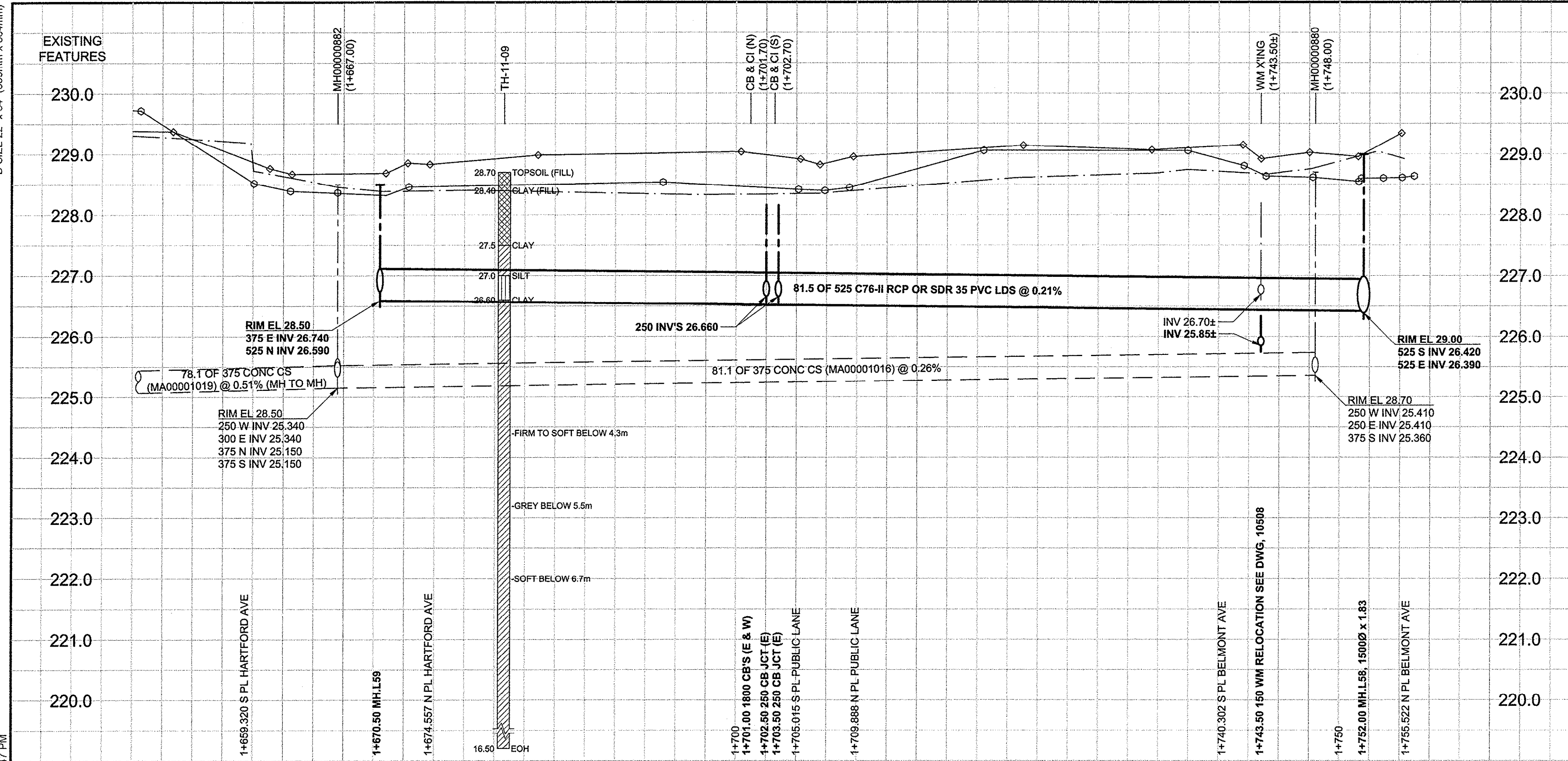
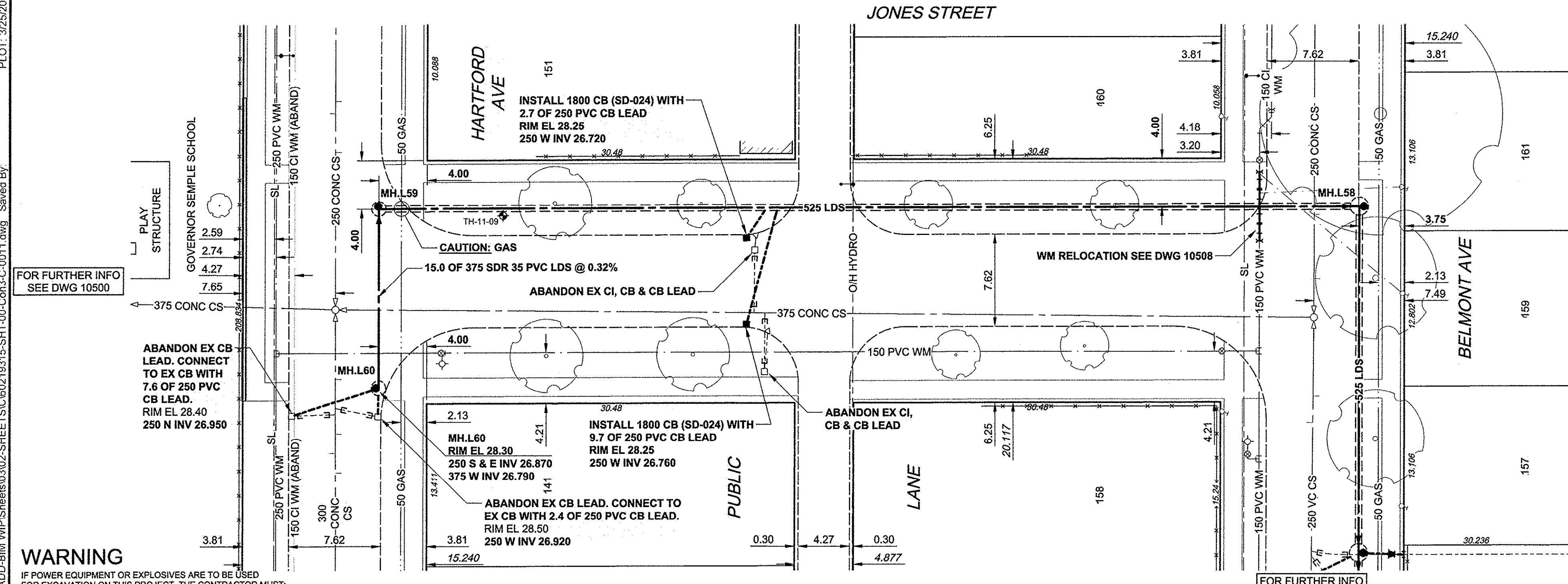


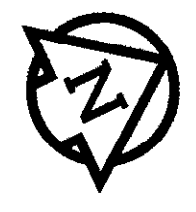
D SIZE 22" x 34" (559mm x 864mm)
 PLOT: 3/25/2013 2:20:47 PM
 AECOM FILE NAME: P:\60219315\000-CADD\040-CADD\040-SHEET\0302-SHEET\030219315-SHT-00-CON3-C-0011.dwg Saved By:



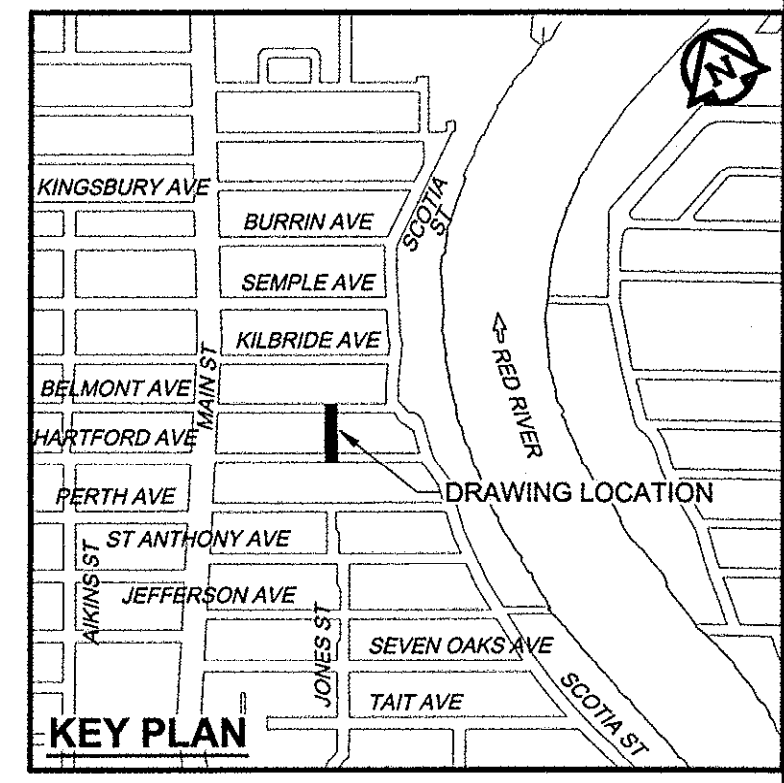
CHAINAGE ALONG E PL



WARNING
 IF POWER EQUIPMENT OR EXPLOSIVES ARE TO BE USED FOR EXCAVATION ON THIS PROJECT, THE CONTRACTOR MUST:
 1) NOTIFY THE GAS COMPANY OF THE PROPOSED LOCATION OF EXCAVATION.
 2) TAKE PRECAUTION TO AVOID DAMAGE TO GAS COMPANY INSTALLATIONS.
 SEE PROVINCIAL REGULATION 140/92 FOR DETAILS.



- CONSTRUCTION NOTES:**
- FOR DETAILED TEST HOLE INFORMATION, SEE SPECIFICATION.
 - LOCATION OF SERVICES SHOWN ON DRAWINGS ARE APPROXIMATE.
 - CONFIRM LOCATION OF ALL WATER & WASTEWATER SERVICES IN THE FIELD.
 - INSTALL NEW SEWERS, CATCHBASIN LEADS AND WATERMANS BY TRENCHLESS METHODS.
 - ALL SHAFTS SHALL HAVE CLASS 3 BACKFILL.



APEGM
 Certificate of Authorization
 AECOM Canada Ltd.
 No. 4671 Date: March 26/13

METRIC
 WHOLE NUMBERS INDICATE MILLIMETRES
 DECIMALIZED NUMBERS INDICATE METRES

BID OPPORTUNITY NO. 235-1013

150 WM	WATERMAIN	150 WM	CURB STOP	150 WM	WATERMAIN	150 WM
Hydrant	HYDRANT	Hydrant	REDUCER	Hydrant	HYDRANT	Hydrant
Valve	VALVE	Valve	COUPLING	Valve	VALVE	Valve
300 LDS	LAND DRAINAGE SEWER	300 LDS	ANODE	300 LDS	LAND DRAINAGE SEWER	300 LDS
250 WWS	WASTE WATER SEWER	250 WWS	HYDRO	250 WWS	WASTE WATER SEWER	250 WWS
Manhole	MANHOLE	Manhole	MTS	Manhole	MANHOLE	Manhole
Catch Basin	CATCH BASIN	Catch Basin	GAS	Catch Basin	CATCH BASIN	Catch Basin
Curb Inlet	CURB INLET	Curb Inlet	TESTHOLE	Curb Inlet	CURB INLET	Curb Inlet
Culvert	CULVERT	Culvert	LAMP STANDARD	Culvert	CULVERT	Culvert
Pipe Abandonments	PIPE ABANDONMENTS	Pipe Abandonments	TREE	Pipe Abandonments	PIPE ABANDONMENTS	Pipe Abandonments
Survey Bar	SURVEY BAR	Survey Bar	PAVING STONE	Survey Bar	SURVEY BAR	Survey Bar
EXISTING	LEGEND - PLAN	NEW	LEGEND - PLAN	EXISTING	LEGEND - PROFILE	NEW

LOCATION APPROVED
 UNDERGROUND STRUCTURES
 SUPR. U/G STRUCTURES DATE COMMITTEE
 NOTE:
 LOCATION OF UNDERGROUND STRUCTURES AS SHOWN ARE BASED ON THE BEST INFORMATION AVAILABLE. BUT NO GUARANTEE IS GIVEN THAT ALL EXISTING UTILITIES ARE SHOWN OR THAT THE GIVEN LOCATIONS ARE EXACT. CONFIRMATION OF EXISTENCE AND EXACT LOCATION OF ALL SERVICES MUST BE OBTAINED FROM THE INDIVIDUAL UTILITIES BEFORE PROCEEDING WITH CONSTRUCTION.

BM 13-009	N.E. Cor. Jefferson Ave. & Main St., Tbt. in S. Conc. foundation of Lift Station, 0.5m W. & 0.1m below brick of S.E. Cor. of Bldg.
ELEV 230.692m	
NO.	REVISIONS
0	ISSUED FOR CONSTRUCTION 13/03/26 ADL
	YY/MM/DD BY DATE

AECOM

DESIGNED BY	FMI	CHECKED BY	EDT
DRAWN BY	ADL	APPROVED BY	[Signature]
HOR. SCALE	1:250	RELEASED FOR CONSTRUCTION	[Signature]
VERT. SCALE	1:50	DATE	March 26/13

PROFESSIONAL'S SEAL
E.B.J. TOUPIN
 Member
 23484
 26/03/13
 CONSULTANT DRAWING NO.
 60219315-SHT-00-CON3-C-0011

THE CITY OF WINNIPEG
 WATER AND WASTE DEPARTMENT

JEFFERSON EAST
 COMBINED SEWER RELIEF
 CONTRACT 3
 JONES STREET
 HARTFORD AVENUE TO
 BELMONT AVENUE

SHEET 11 OF 13
 CITY DRAWING NUMBER
10509
 REV 0