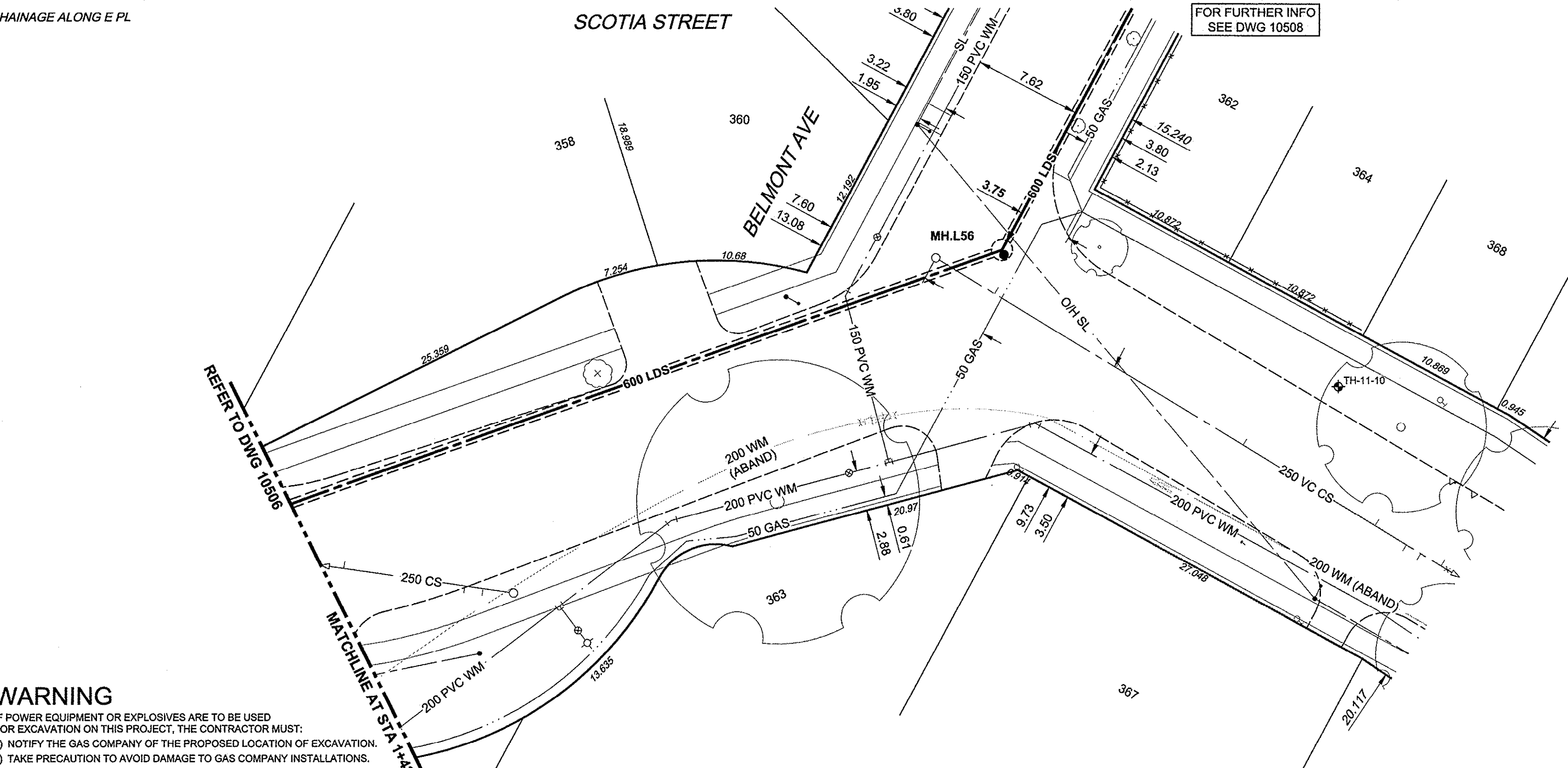
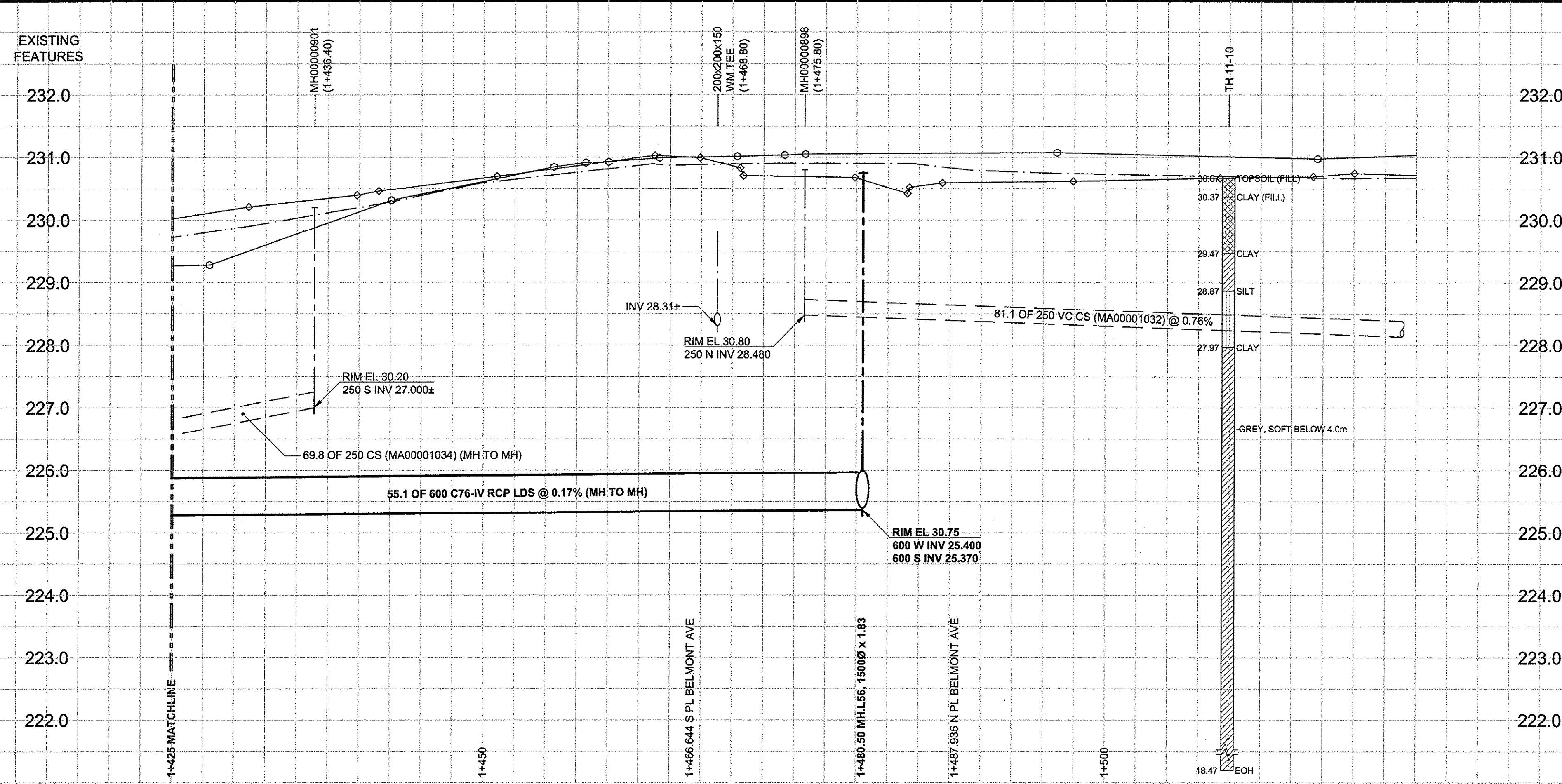


D SIZE 22" x 34" (559mm x 864mm) PLOT: 3/25/2013 2:19:53 PM AECOM REVIEW DRFT CHK (G) AECOM FILE NAME: P:\602193\15000-CADD\040-CADD\040-SHEETS\0302-SHEETS\0302-SHT-00-CON-3-C-0006\_C-0008.dwg Saved



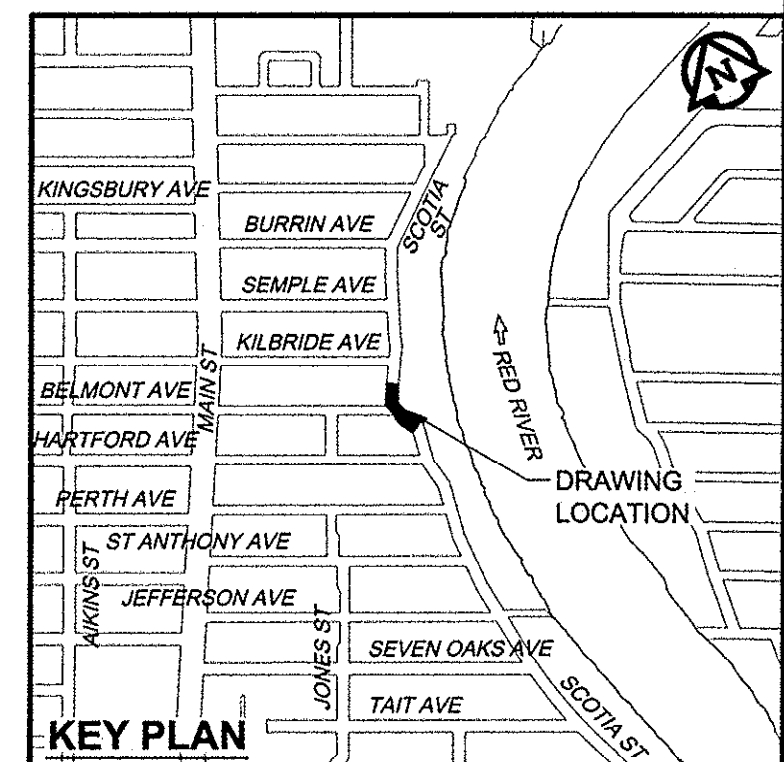
**SEWER SERVICE INFORMATION**

| ADDRESS    | PL TIE (SHORT/LONG) | JUNCTION TIE | REMARKS |
|------------|---------------------|--------------|---------|
| 358 SCOTIA |                     |              | NO INFO |
| 360 SCOTIA |                     |              | NO INFO |
| 362 SCOTIA |                     |              | NO INFO |
| 363 SCOTIA |                     |              | NO INFO |
| 364 SCOTIA |                     |              | NO INFO |
| 367 SCOTIA |                     |              | NO INFO |
| 368 SCOTIA |                     |              | NO INFO |

**WATER SERVICE INFORMATION**

| ADDRESS    | DISTANCE PROPERTY | SIZE (mm) & TYPE | SHORT & LONG MEASUREMENT              | CORPORATION LOCATION | REMARKS  |
|------------|-------------------|------------------|---------------------------------------|----------------------|----------|
| 358 SCOTIA |                   | 16 LEAD          | 2.1m SNL HSE                          |                      |          |
| 360 SCOTIA |                   | 20 COPPER        | OPP WL HSE<br>7.2m EWL SCOTIA (NORTH) |                      |          |
| 362 SCOTIA |                   | 12 COPPER        | 2.8m SSL HSE                          |                      | OPP S/C  |
| 363 SCOTIA |                   |                  | 0.4m>NNL HSE<br>4.7m>NNL BELMONT      |                      |          |
| 364 SCOTIA |                   | 12 COPPER        | 1.4m>NNL HSE<br>19.7m>NNL BELMONT     |                      | 0.5m S/C |
| 367 SCOTIA |                   |                  | OPP NIL HSE                           |                      |          |
| 368 SCOTIA |                   |                  | 38.4 SSL KILBRIDE                     |                      |          |

- CONSTRUCTION NOTES:**
- FOR DETAILED TEST HOLE INFORMATION, SEE SPECIFICATION.
  - LOCATION OF SERVICES SHOWN ON DRAWINGS ARE APPROXIMATE.
  - CONFIRM LOCATION OF ALL WATER & WASTEWATER SERVICES IN THE FIELD.
  - INSTALL NEW SEWERS, CATCHBASIN LEADS AND WATERMANS BY TRENCHLESS METHODS.
  - ALL SHAFTS SHALL HAVE CLASS 3 BACKFILL.
  - PAVEMENT RESTORATION FOR 600 & 750 LDS INSTALLATION ON SCOTIA STREET FROM MH.L49 TO MH.L56 SHALL BE INCIDENTAL TO PIPE INSTALLATION EXCEPT ASPHALTIC CONCRETE PLANING AND OVERLAY.



**WARNING**  
IF POWER EQUIPMENT OR EXPLOSIVES ARE TO BE USED FOR EXCAVATION ON THIS PROJECT, THE CONTRACTOR MUST:  
1) NOTIFY THE GAS COMPANY OF THE PROPOSED LOCATION OF EXCAVATION.  
2) TAKE PRECAUTION TO AVOID DAMAGE TO GAS COMPANY INSTALLATIONS.  
SEE PROVINCIAL REGULATION 140/92 FOR DETAILS

**LOCATION APPROVED**  
UNDERGROUND STRUCTURES  
SUPR. U/G STRUCTURES COMMITTEE DATE  
NOTE:  
LOCATION OF UNDERGROUND STRUCTURES AS SHOWN ARE BASED ON THE BEST INFORMATION AVAILABLE. BUT NO GUARANTEE IS GIVEN THAT ALL EXISTING UTILITIES ARE SHOWN OR THAT THE GIVEN LOCATIONS ARE EXACT. CONFIRMATION OF EXISTENCE AND EXACT LOCATION OF ALL SERVICES MUST BE OBTAINED FROM THE INDIVIDUAL UTILITIES BEFORE PROCEEDING WITH CONSTRUCTION.

|               |  |
|---------------|--|
| BM 13-009     | N.E. Cor. Jefferson Ave. & Main St., Tdbt. in S. Conc. foundation of Ltr Station, 0.5m W. & 0.1m below brick of S.E. Cor. of Bldg. |
| ELEV 230.692m |  |
| NO.           | REVISIONS  |
|               | BY   |
|               | DATE   |

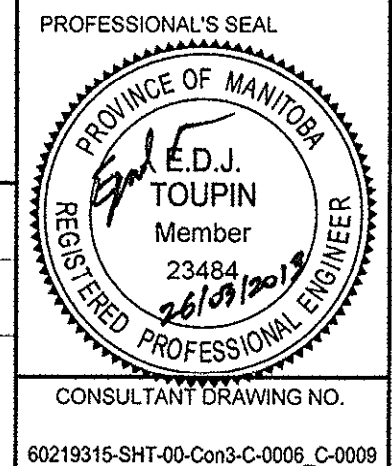
|             |       |                           |                    |
|-------------|-------|---------------------------|--------------------|
| DESIGNED BY | FMI   | CHECKED BY                | EDT                |
| DRAWN BY    | ADL   | APPROVED BY               | <i>[Signature]</i> |
| HOR. SCALE  | 1:250 | RELEASED FOR CONSTRUCTION | <i>[Signature]</i> |
| VERT. SCALE | 1:50  | DATE                      | March 26, 2013     |



**METRIC**  
WHOLE NUMBERS INDICATE MILLIMETRES  
DECIMALIZED NUMBERS INDICATE METRES

BID OPPORTUNITY NO. 235-2013

| EXISTING           | LEGEND - PLAN       | NEW                | EXISTING      | LEGEND - PROFILE   | NEW                 |
|--------------------|---------------------|--------------------|---------------|--------------------|---------------------|
| 150 WM             | WATERMAIN           | 150 WM             | CURB STOP     | 150 WM             | WATERMAIN           |
| Hydrant symbol     | HYDRANT             | Hydrant symbol     | REDUCER       | Hydrant symbol     | HYDRANT             |
| Valve symbol       | VALVE               | Valve symbol       | COUPLING      | Valve symbol       | VALVE               |
| 300 LDS            | LAND DRAINAGE SEWER | 300 LDS            | ANODE         | 300 LDS            | LAND DRAINAGE SEWER |
| 250 WWS            | WASTE WATER SEWER   | 250 WWS            | HYDRO         | 250 WWS            | WASTE WATER SEWER   |
| Manhole symbol     | MANHOLE             | Manhole symbol     | MTS           | Manhole symbol     | PAVEMENT CROWN      |
| Catch basin symbol | CATCH BASIN         | Catch basin symbol | GAS           | Catch basin symbol | N/W PROPERTY LINE   |
| Curb inlet symbol  | CURB INLET          | Curb inlet symbol  | TESTHOLE      | Curb inlet symbol  | S/E PROPERTY LINE   |
| Culvert symbol     | CULVERT             | Culvert symbol     | LAMP STANDARD | Culvert symbol     | N/W GUTTER          |
| Survey bar symbol  | PIPE ABANDONMENTS   | Survey bar symbol  | TREE          | Survey bar symbol  | S/E GUTTER          |
| Survey bar symbol  | SURVEY BAR          | Survey bar symbol  | PAVING STONE  | Survey bar symbol  |                     |



**THE CITY OF WINNIPEG**  
WATER AND WASTE DEPARTMENT

**JEFFERSON EAST**  
COMBINED SEWER RELIEF  
CONTRACT 3  
SCOTIA STREET

40m NORTH OF HARTFORD AVENUE TO  
30m SOUTH OF KILBRIDE AVENUE

SHEET 09 OF 13  
CITY DRAWING NUMBER  
10507