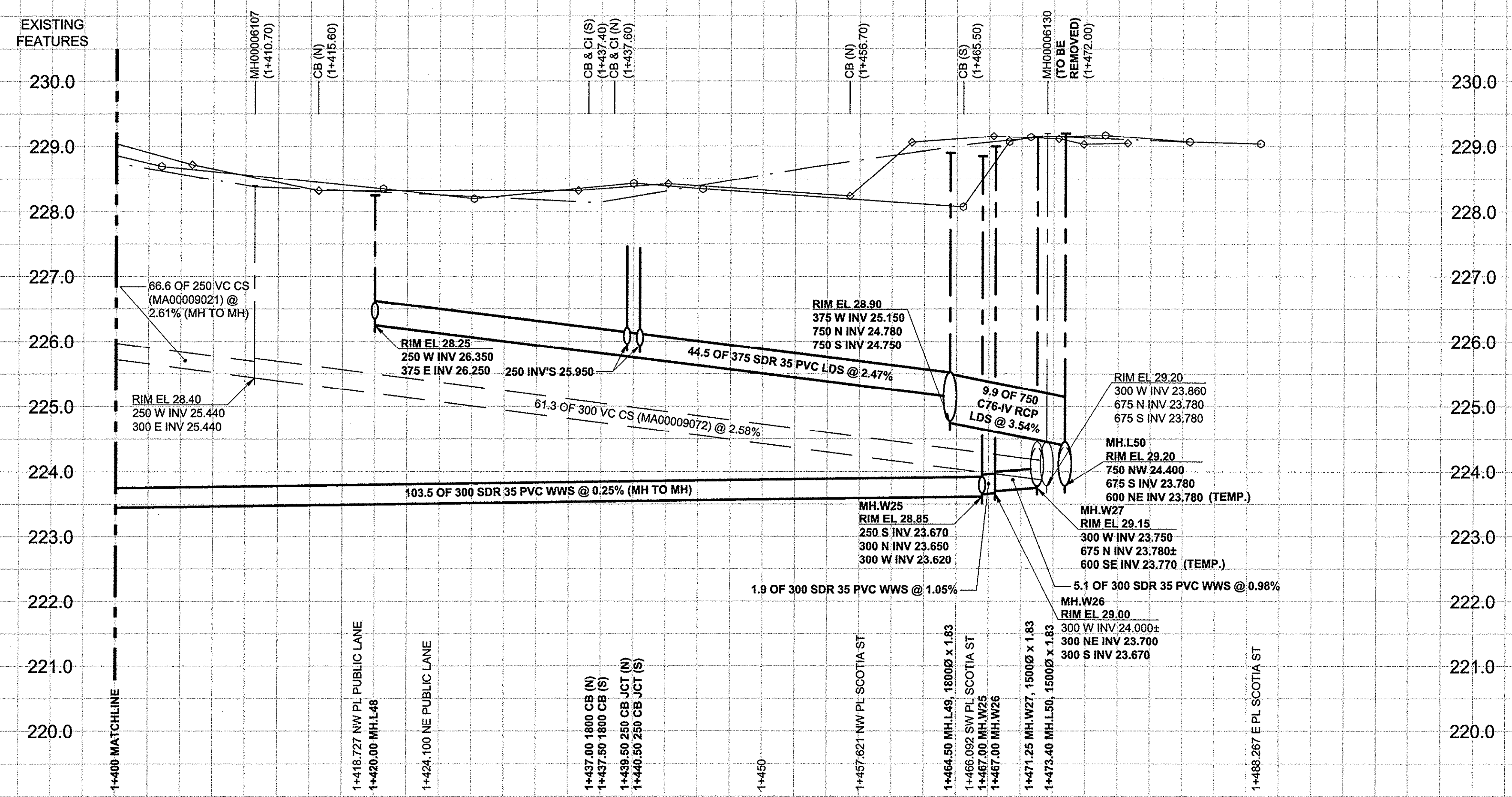


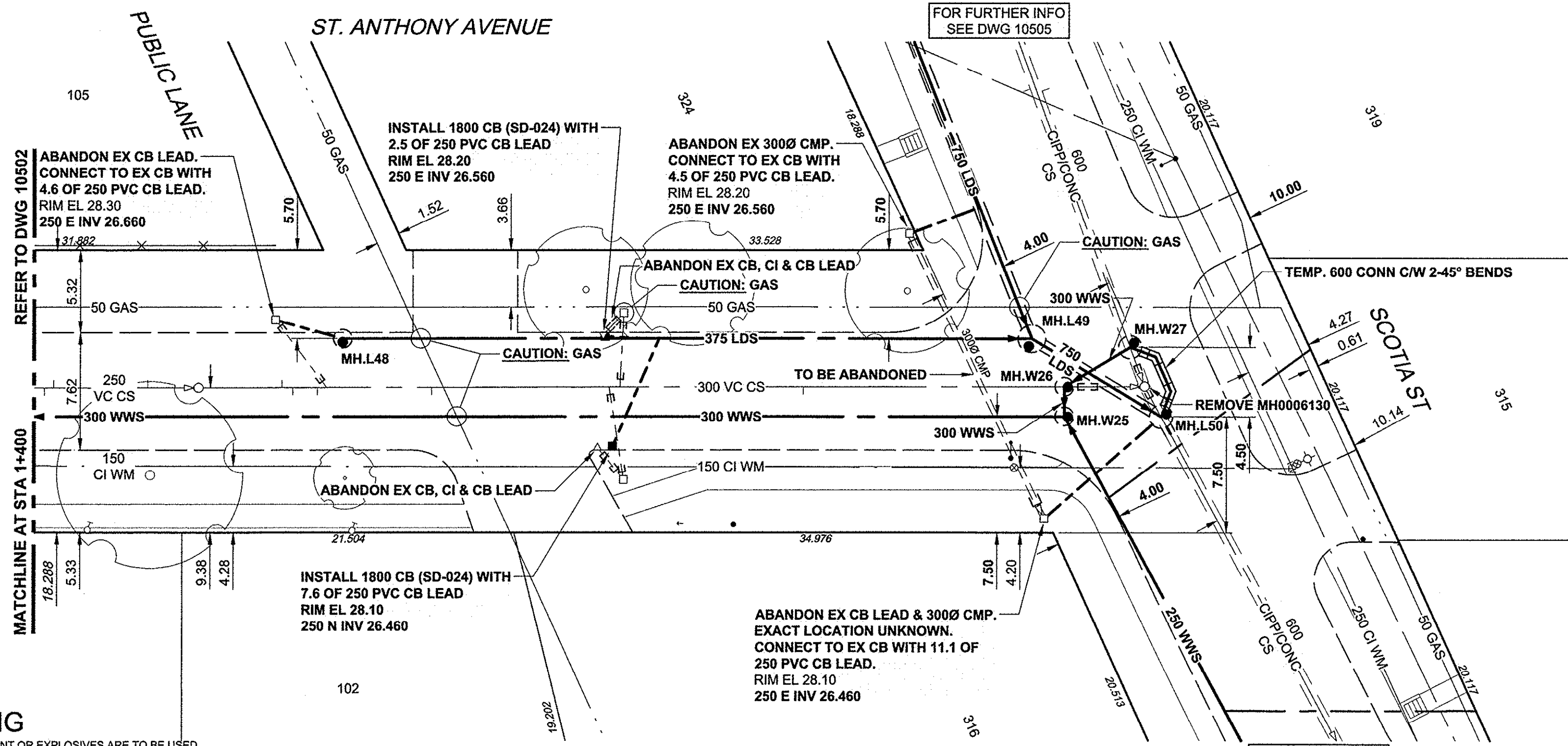
D SIZE 22" x 34" (560mm x 864mm)

PLOT: 3/25/2013 2:17:25 PM

AECOM REVIEW DRAFT CHK [Signature]



CHAINAGE ALONG S PL



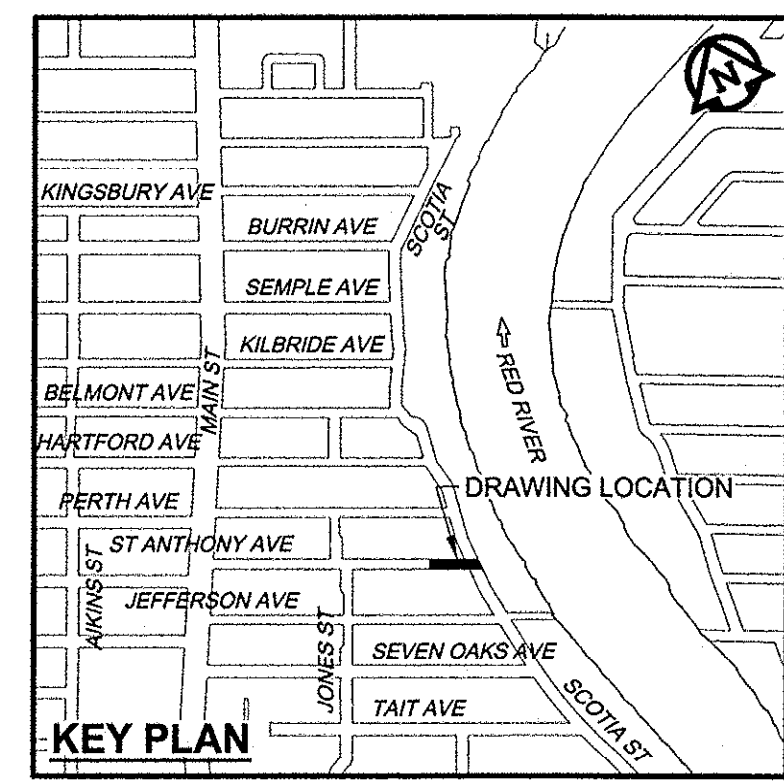
- CONSTRUCTION NOTES:**
- FOR DETAILED TEST HOLE INFORMATION, SEE SPECIFICATION.
 - LOCATION OF SERVICES SHOWN ON DRAWINGS ARE APPROXIMATE.
 - CONFIRM LOCATION OF ALL WATER & WASTEWATER SERVICES IN THE FIELD.
 - INSTALL NEW SEWERS, CATCHBASIN LEADS AND WATERMANS BY TRENCHLESS METHODS.
 - ALL SHAFTS SHALL HAVE CLASS 3 BACKFILL.
 - RENEW SEWER SERVICES TO PROPERTY LINE AND PLUG EXISTING SERVICE AS PER SD-021

SEWER SERVICE INFORMATION

ADDRESS	PL TIE (SHORT/LONG)	JUNCTION TIE	REMARKS
* 315 SCOTIA		1.0m S OF MH @ ST ANTHONY	
316 SCOTIA		22.3m W OF MANHOLE @ SCOTIA ST	SERVICE OFF ST ANTHONY
319 SCOTIA		69m S OF MH @ PERTH	
324 SCOTIA		69.0m S OF MH @ PERTH	

WATER SERVICE INFORMATION

ADDRESS	DISTANCE PROPERTY	SIZE (mm) & TYPE	SHORT & LONG MEASUREMENT	CORPORATION LOCATION	REMARKS
315 SCOTIA	10.50	20 COPPER	5.1m SNL HSE 6.4m N HYD ST ANTHONY	0.4m N S/C	
316 SCOTIA	0.15	20 COPPER	3.8m EWL HSE 16.7m WWL SCOTIA	0.3m W S/C	
319 SCOTIA	0.30	20 COPPER	6.7m SNL HSE 24.6m N HYD ST ANTHONY	1.7m S S/C	
324 SCOTIA	PROPERTY	20 COPPER	4m SNL HSE 11.2m NNL ST ANTHONY	52m S S/C	



WARNING
IF POWER EQUIPMENT OR EXPLOSIVES ARE TO BE USED FOR EXCAVATION ON THIS PROJECT, THE CONTRACTOR MUST:
1) NOTIFY THE GAS COMPANY OF THE PROPOSED LOCATION OF EXCAVATION.
2) TAKE PRECAUTION TO AVOID DAMAGE TO GAS COMPANY INSTALLATIONS.
SEE PROVINCIAL REGULATION 140/92 FOR DETAILS

APECM
Certificate of Authorization
AECOM Canada Ltd.
No. 4671 Date: *March 26/2013*

METRIC
WHOLE NUMBERS INDICATE MILLIMETRES
DECIMALIZED NUMBERS INDICATE METRES

BID OPPORTUNITY NO. 235-2013

150 WM	WATERMAIN	150 WM	150 WM	150 WM	WATERMAIN	150 WM	150 WM
	HYDRANT		VALVE		CURB STOP		HYDRANT
	COUPLING		ANODE		REDUCER		VALVE
	LAND DRAINAGE SEWER		ANODE		COUPLING		LAND DRAINAGE SEWER
	WASTE WATER SEWER		HYDRO		WASTE WATER SEWER		WASTE WATER SEWER
	MANHOLE		HYDRO		LAND DRAINAGE SEWER		WASTE WATER SEWER
	CATCH BASIN		HYDRO		LAND DRAINAGE SEWER		WASTE WATER SEWER
	CURB INLET		HYDRO		LAND DRAINAGE SEWER		WASTE WATER SEWER
	CULVERT		HYDRO		LAND DRAINAGE SEWER		WASTE WATER SEWER
	PIPE ABANDONMENTS		HYDRO		LAND DRAINAGE SEWER		WASTE WATER SEWER
	SURVEY BAR		HYDRO		LAND DRAINAGE SEWER		WASTE WATER SEWER
	EXISTING		NEW		EXISTING		NEW

LOCATION APPROVED
UNDERGROUND STRUCTURES

DATE COMMITTEE

NOTE:
LOCATION OF UNDERGROUND STRUCTURES AS SHOWN ARE BASED ON THE BEST INFORMATION AVAILABLE. BUT NO GUARANTEE IS GIVEN THAT ALL EXISTING UTILITIES ARE SHOWN OR THAT THE GIVEN LOCATIONS ARE EXACT. CONFIRMATION OF EXISTENCE AND EXACT LOCATION OF ALL SERVICES MUST BE OBTAINED FROM THE INDIVIDUAL UTILITIES BEFORE PROCEEDING WITH CONSTRUCTION.

NO.	ISSUED FOR CONSTRUCTION	13/03/26	ADL
0	ISSUED FOR CONSTRUCTION	13/03/26	ADL
NO.	REVISIONS	YYMMDD	BY

AECOM

DESIGNED BY: FMI
DRAWN BY: ADL
HOR. SCALE: 1:250
VERT. SCALE: 1:50

CHECKED BY: *EDT*
APPROVED BY: *[Signature]*
RELEASED FOR CONSTRUCTION: *[Signature]*
DATE: *March 26/13*

PROFESSIONAL'S SEAL
E.D.J. TOUPIN
Member
23484
26/03/2013
CONSULTANT DRAWING NO.
60219315-SHT-00-CON-3-C-0003_C-0005

THE CITY OF WINNIPEG
WATER AND WASTE DEPARTMENT

JEFFERSON EAST
COMBINED SEWER RELIEF
CONTRACT 3
ST. ANTHONY AVENUE
128m EAST OF JONES STREET TO
SCOTIA STREET

SHEET 05 OF 13
CITY DRAWING NUMBER
10503
REV 0