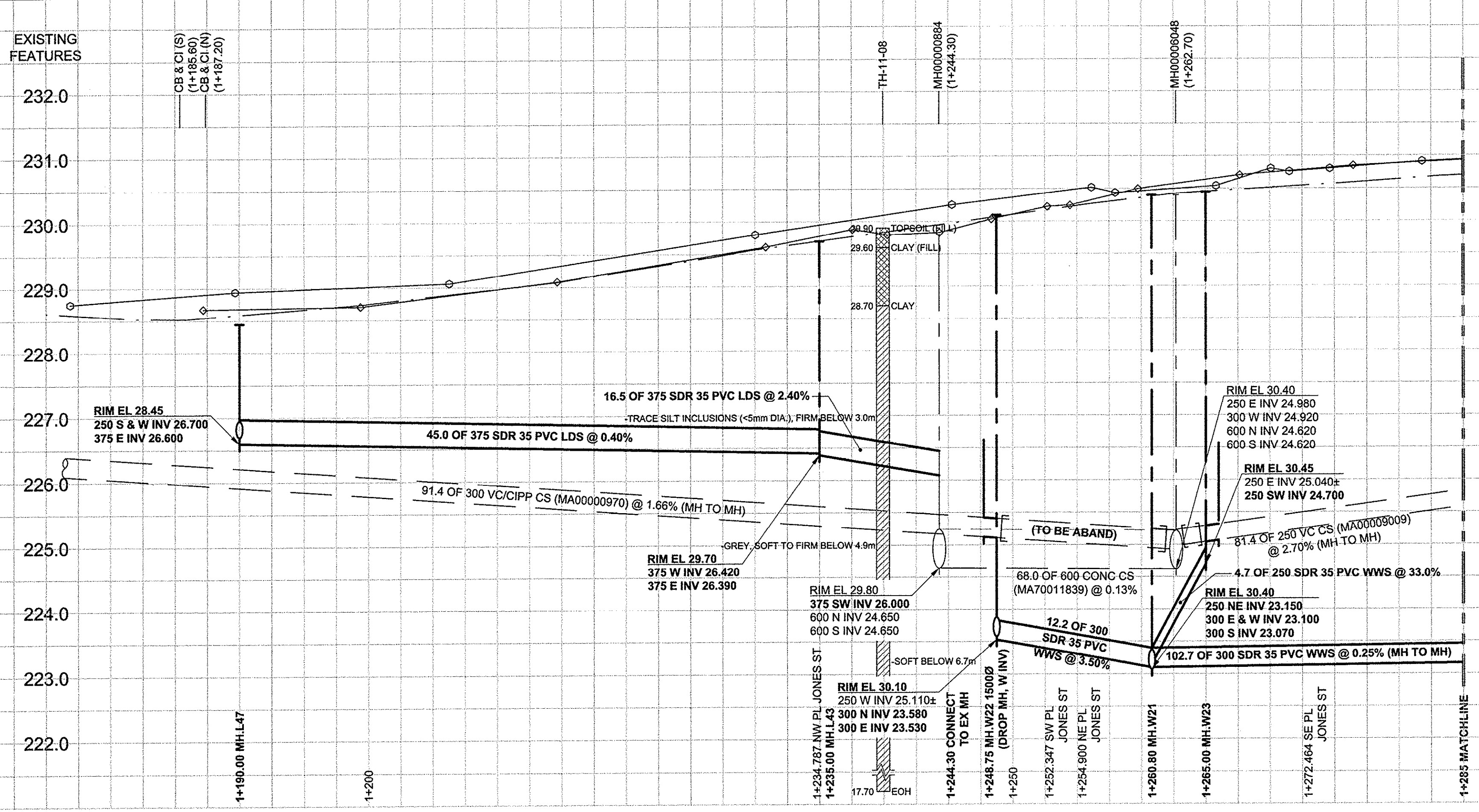
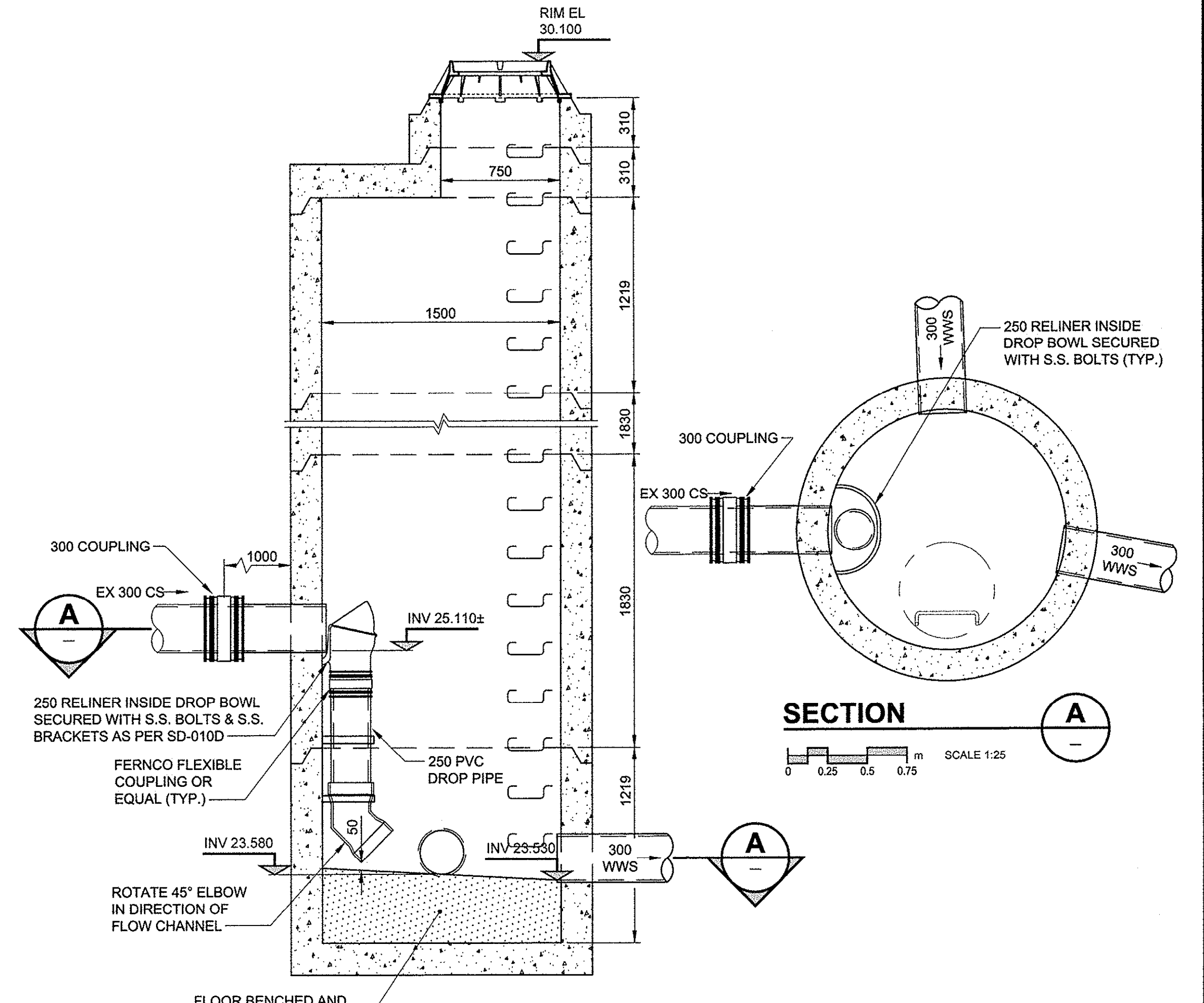


D SIZE 22" x 34" (558mm x 864mm) PLOT: 3/25/2013 2:16:39 PM AECOM REVIEW DRFT CHK AECOM FILE NAME: P:\02\1931\000\CADD\040\CADD\040_SHT-00-CON-3-C-0003_C-0005.dwg Saved



232.0
231.0
230.0
229.0
228.0
227.0
226.0
225.0
224.0
223.0
222.0

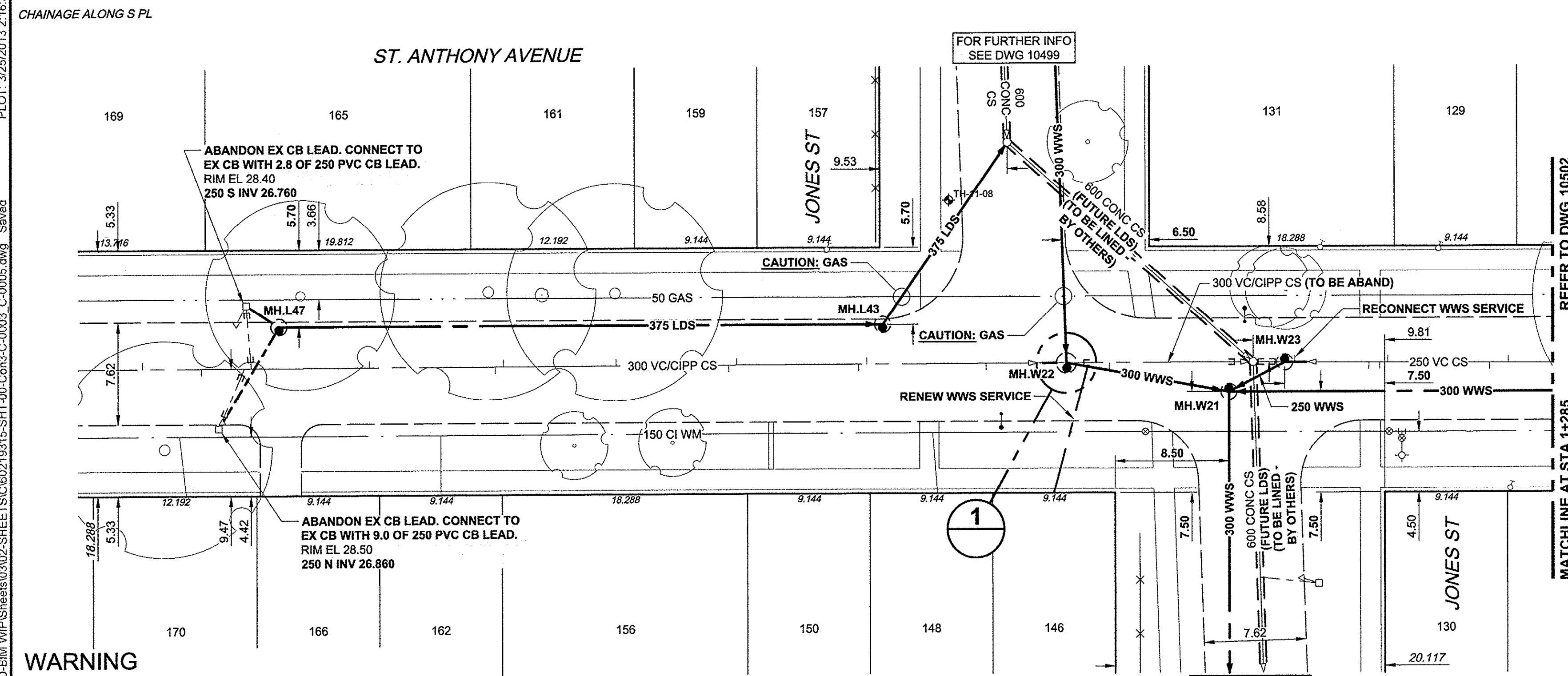


DETAIL

SCALE 1:25
0 0.25 0.5 0.75 m

CONSTRUCTION NOTES:

- FOR DETAILED TEST HOLE INFORMATION, SEE SPECIFICATION.
- LOCATION OF SERVICES SHOWN ON DRAWINGS ARE APPROXIMATE.
- CONFIRM LOCATION OF ALL WATER & WASTEWATER SERVICES IN THE FIELD.
- INSTALL NEW SEWERS, CATCHBASIN LEADS AND WATERMAINS BY TRENCHLESS METHODS.
- ALL SHAFTS SHALL HAVE CLASS 3 BACKFILL.
- RECONNECT SEWER SERVICE TO #131 ST. ANTHONY AVENUE. RENEW SEWER SERVICE TO #146 ST. ANTHONY AVENUE. PLUG EXISTING SERVICE AS PER SD-021.



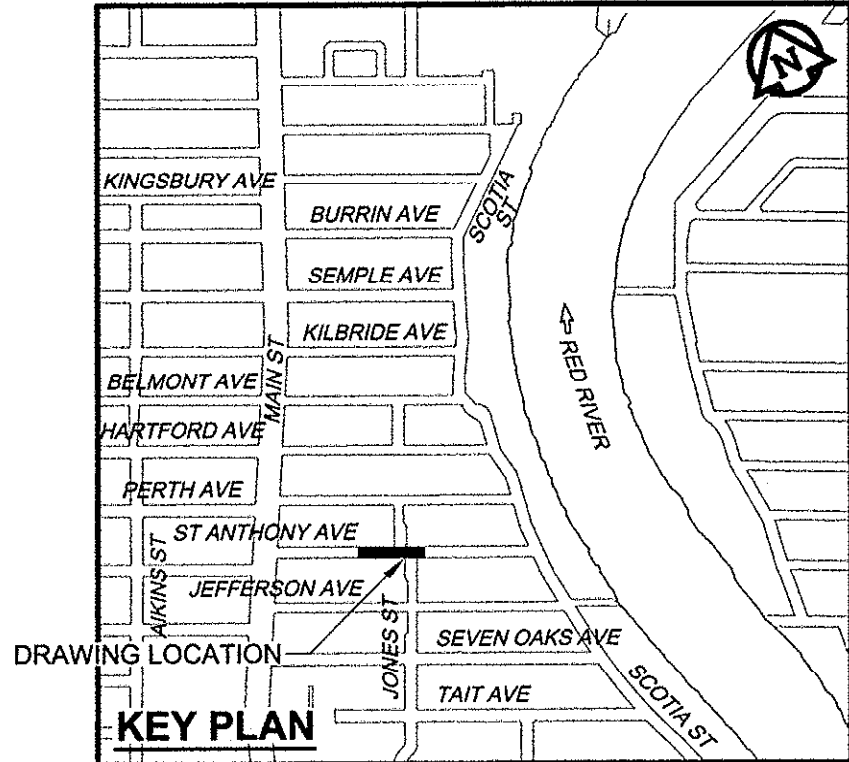
REFER TO DWG 10502
MATCHLINE AT STA 1+285

SEWER SERVICE INFORMATION

ADDRESS	PL TIE (SHORT/LONG)	JUNCTION TIE	REMARKS
131 ST. ANTHONY		3.7m E OF MH @ JONES	
146 ST. ANTHONY		10.7m W OF MH @ JONES	
157 ST. ANTHONY		29.6m W OF MH @ JONES	
159 ST. ANTHONY		38.4m W OF MH @ JONES	
161 ST. ANTHONY		47.5m W OF MH @ JONES	
165 ST. ANTHONY			NO INFO

WATER SERVICE INFORMATION

ADDRESS	DISTANCE PROPERTY	SIZE (mm) & TYPE	SHORT & LONG MEASUREMENT	CORPORATION LOCATION	REMARKS
131 ST. ANTHONY	0.15	12 LEAD	0.20m WEL HSE 14.2m EEL JONES		0.3m W S/C
146 ST. ANTHONY		19 COPPER	2.3m WEL HSE		
157 ST. ANTHONY	0.30	12 LEAD	1.7m WEL HSE 4.9m WWL JONES		OPP S/C
159 ST. ANTHONY	0.30	20 COPPER	4.0m EWL HSE 16.9m WWL JONES		1.5m W S/C
161 ST. ANTHONY	0.15	20 LEAD	1.7 WEL HSE		0.3m W S/C
165 ST. ANTHONY					NO INFO



WARNING
IF POWER EQUIPMENT OR EXPLOSIVES ARE TO BE USED FOR EXCAVATION ON THIS PROJECT, THE CONTRACTOR MUST:
1) NOTIFY THE GAS COMPANY OF THE PROPOSED LOCATION OF EXCAVATION.
2) TAKE PRECAUTION TO AVOID DAMAGE TO GAS COMPANY INSTALLATIONS.
SEE PROVINCIAL REGULATION 140/92 FOR DETAILS

150 WM	WATERMAIN	150 WM	150 WM	CURB STOP	150 WM	WATERMAIN	150 WM
	HYDRANT			REDUCER		HYDRANT	
	VALVE			COUPLING		VALVE	
	LAND DRAINAGE SEWER			ANODE		LAND DRAINAGE SEWER	
	WASTE WATER SEWER			HYDRO		WASTE WATER SEWER	
	MANHOLE			MTS		PAVEMENT CROWN	
	CATCH BASIN			GAS		S/E PROPERTY LINE	
	CURB INLET			TESTHOLE		N/W GUTTER	
	CULVERT			LAMP STANDARD		S/E GUTTER	
	PIPE ABANDONMENTS			TREE		PAVING STONE	
	SURVEY BAR			LEGEND - PLAN		LEGEND - PROFILE	
	LEGEND - PLAN			LEGEND - PLAN			

LOCATION APPROVED
UNDERGROUND STRUCTURES
SUPR. U/G STRUCTURES DATE COMMITTEE
NOTE: LOCATION OF UNDERGROUND STRUCTURES AS SHOWN ARE BASED ON THE BEST INFORMATION AVAILABLE. BUT NO GUARANTEE IS GIVEN THAT ALL EXISTING UTILITIES ARE SHOWN OR THAT THE GIVEN LOCATIONS ARE EXACT. CONFIRMATION OF EXISTENCE AND EXACT LOCATION OF ALL SERVICES MUST BE OBTAINED FROM THE INDIVIDUAL UTILITIES BEFORE PROCEEDING WITH CONSTRUCTION.

NO.	ISSUED FOR CONSTRUCTION	13/03/26	ADL
0	ISSUED FOR CONSTRUCTION	13/03/26	ADL
NO.	REVISIONS	YYMMDD	BY

AECOM
DESIGNED BY: FMI
DRAWN BY: ADL
HOR. SCALE: 1:250
VERT. SCALE: 1:50
CHECKED BY: EDI
APPROVED BY: [Signature]
RELEASED FOR CONSTRUCTION
DATE: March 26/13

APEGM
Certificate of Authorization
AECOM Canada Ltd.
No. 4671 Date: March 26/2013

PROFESSIONAL'S SEAL
EDJ. TOUPIN
Member
23484
26/03/2013
CONSULTANT DRAWING NO. 60219315-SHT-00-CON-3-C-0003_C-0005

THE CITY OF WINNIPEG
WATER AND WASTE DEPARTMENT
JEFFERSON EAST
COMBINED SEWER RELIEF
CONTRACT 3
ST. ANTHONY AVENUE
135m EAST OF MAIN STREET TO
181m WEST OF SCOTIA STREET
SHEET 03 OF 13
CITY DRAWING NUMBER
10501
REV 0

BID OPPORTUNITY NO. 235-1013