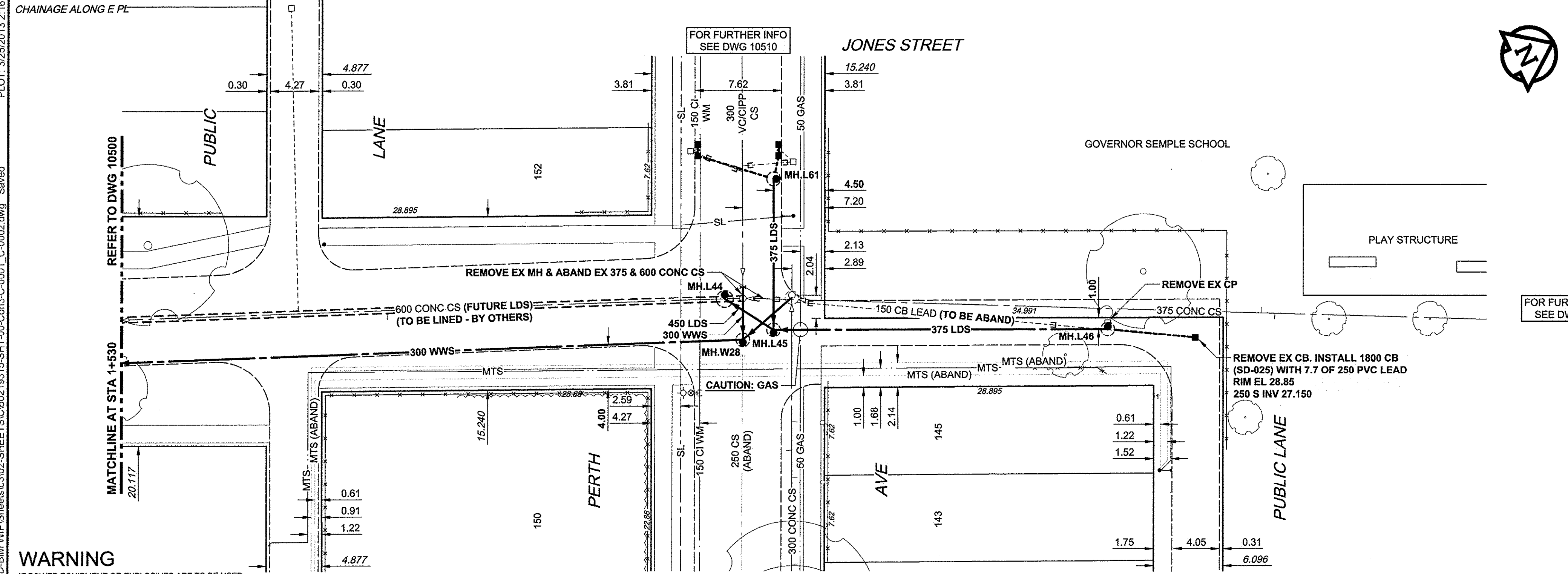
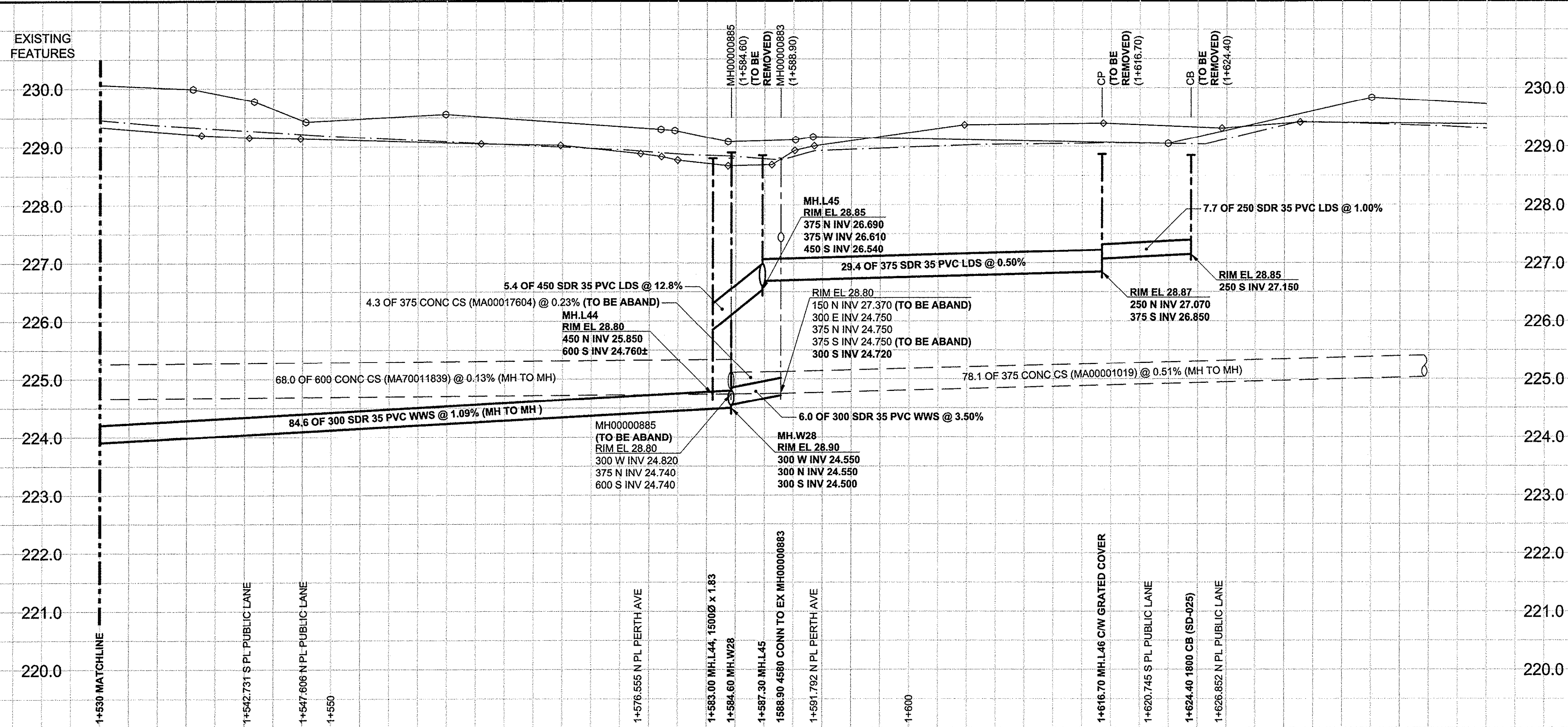


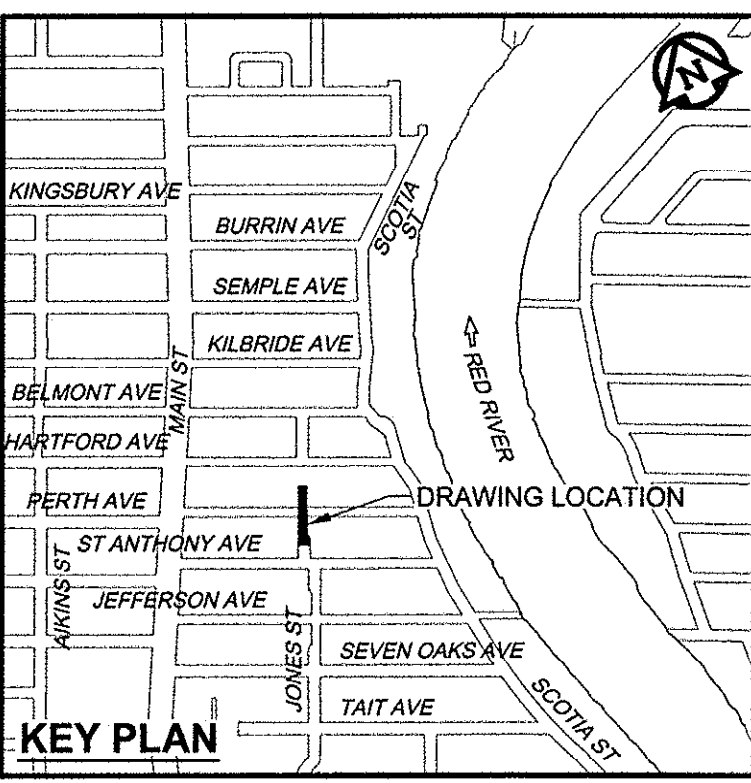
D SIZE 22" x 34" (559mm x 864mm)

PLOT: 3/25/2013 2:16:12 PM

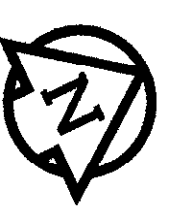
AECOM REVIEW DRFT CHK



- CONSTRUCTION NOTES:**
- FOR DETAILED TEST HOLE INFORMATION, SEE SPECIFICATION.
  - LOCATION OF SERVICES SHOWN ON DRAWINGS ARE APPROXIMATE.
  - CONFIRM LOCATION OF ALL WATER & WASTEWATER SERVICES IN THE FIELD.
  - INSTALL NEW SEWERS, CATCHBASIN LEADS AND WATERMANS BY TRENCHLESS METHODS.
  - ALL SHAFTS SHALL HAVE CLASS 3 BACKFILL.



**WARNING**  
 IF POWER EQUIPMENT OR EXPLOSIVES ARE TO BE USED FOR EXCAVATION ON THIS PROJECT, THE CONTRACTOR MUST:  
 1) NOTIFY THE GAS COMPANY OF THE PROPOSED LOCATION OF EXCAVATION.  
 2) TAKE PRECAUTION TO AVOID DAMAGE TO GAS COMPANY INSTALLATIONS.  
 SEE PROVINCIAL REGULATION 140/92 FOR DETAILS



FOR FURTHER INFO SEE DWG 10509

**APECM**  
 Certificate of Authorization  
 AECOM Canada Ltd.  
 No. 4671 Date: March 26, 2013

**METRIC**  
 WHOLE NUMBERS INDICATE MILLIMETRES  
 DECIMALIZED NUMBERS INDICATE METRES

BID OPPORTUNITY NO. 235-2013

LEGEND - PLAN	NEW	EXISTING	LEGEND - PROFILE	NEW	EXISTING
150 WM	WATERMAIN	150 WM	150 WM	WATERMAIN	150 WM
Hydrant	HYDRANT	Hydrant	Hydrant	HYDRANT	Hydrant
Valve	VALVE	Valve	Valve	VALVE	Valve
300 LDS	LAND DRAINAGE SEWER	300 LDS	300 LDS	LAND DRAINAGE SEWER	300 LDS
250 WWS	WASTE WATER SEWER	250 WWS	250 WWS	WASTE WATER SEWER	250 WWS
Manhole	MANHOLE	Manhole	Manhole	MANHOLE	Manhole
Catch Basin	CATCH BASIN	Catch Basin	Catch Basin	CATCH BASIN	Catch Basin
Curb Inlet	CURB INLET	Curb Inlet	Curb Inlet	CURB INLET	Curb Inlet
Culvert	CULVERT	Culvert	Culvert	CULVERT	Culvert
Pipe Abandonments	PIPE ABANDONMENTS	Pipe Abandonments	Pipe Abandonments	PIPE ABANDONMENTS	Pipe Abandonments
Survey Bar	SURVEY BAR	Survey Bar	Survey Bar	SURVEY BAR	Survey Bar
Existing	LEGEND - PLAN	New	Existing	LEGEND - PROFILE	New

**LOCATION APPROVED**  
 UNDERGROUND STRUCTURES  
 SUPR. U/G STRUCTURES DATE COMMITTEE  
 NOTE: LOCATION OF UNDERGROUND STRUCTURES AS SHOWN ARE BASED ON THE BEST INFORMATION AVAILABLE. BUT NO GUARANTEE IS GIVEN THAT ALL EXISTING UTILITIES ARE SHOWN OR THAT THE GIVEN LOCATIONS ARE EXACT. CONFIRMATION OF EXISTENCE AND EXACT LOCATION OF ALL SERVICES MUST BE OBTAINED FROM THE INDIVIDUAL UTILITIES BEFORE PROCEEDING WITH CONSTRUCTION.

BM 13-009	N.E. Cor. Jefferson Ave. & Main St., Tdbt. in S. Conc. foundation of Lift Station, 0.5m W. & 0.1m below brick of S.E. Cor. of Bldg.
ELEV 230.692m	
NO.	REVISIONS
0	ISSUED FOR CONSTRUCTION 13/03/26 ADL
	DATE

<b>AECOM</b>	DESIGNED BY: FMI	CHECKED BY: EDT
	DRAWN BY: ADL	APPROVED BY: [Signature]
	HOR. SCALE: 1:250	RELEASED FOR CONSTRUCTION: [Signature]
	VERT. SCALE: 1:50	DATE: March 26, 2013

PROFESSIONAL'S SEAL  
**E.D.J. TOUPIN**  
 Member  
 23484  
 26/03/2013  
 REGISTERED PROFESSIONAL ENGINEER  
 CONSULTANT DRAWING NO.  
 60219315-SHT-00-Con3-C-0001\_C-0002

**THE CITY OF WINNIPEG**  
 WATER AND WASTE DEPARTMENT

**JEFFERSON EAST**  
 COMBINED SEWER RELIEF  
 CONTRACT 3  
 JONES STREET  
 21m NORTH OF ST. ANTHONY TO  
 PUBLIC LANE NORTH OF PERTH AVENUE

SHEET 02 OF 13  
 CITY DRAWING NUMBER  
**10500**  
 REV 0