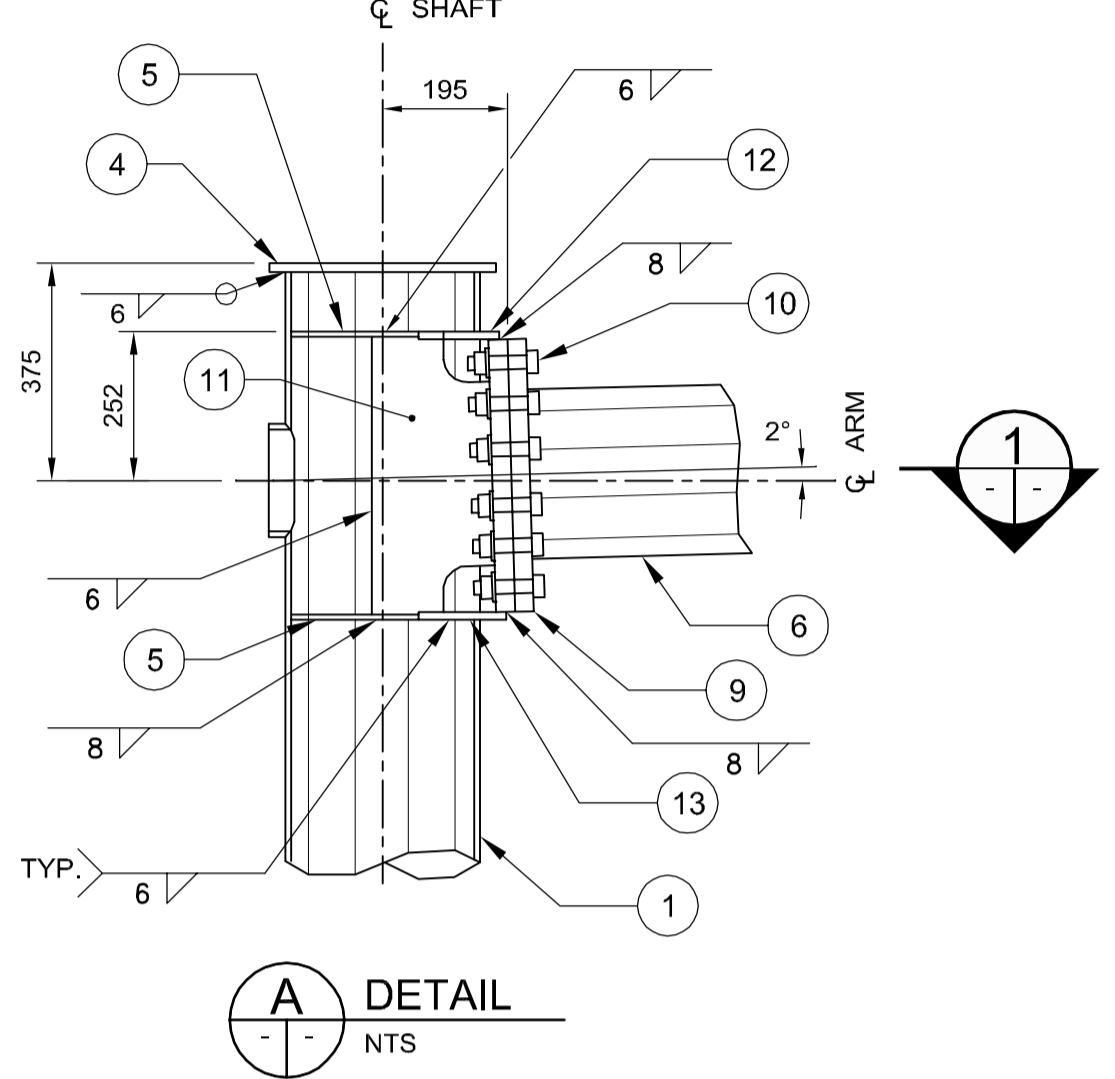
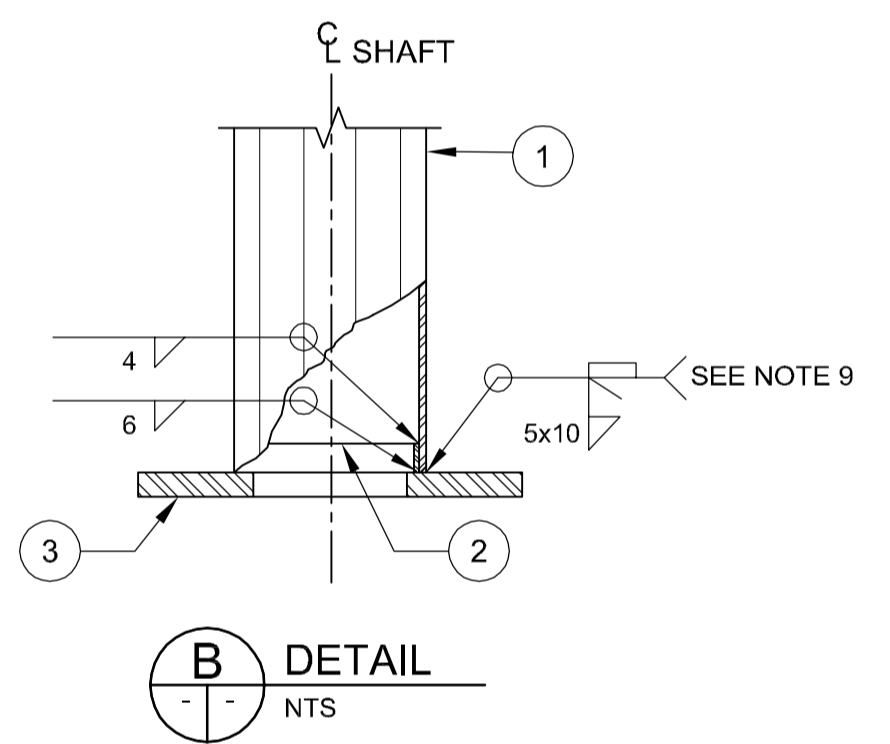


ELEVATION
NTS

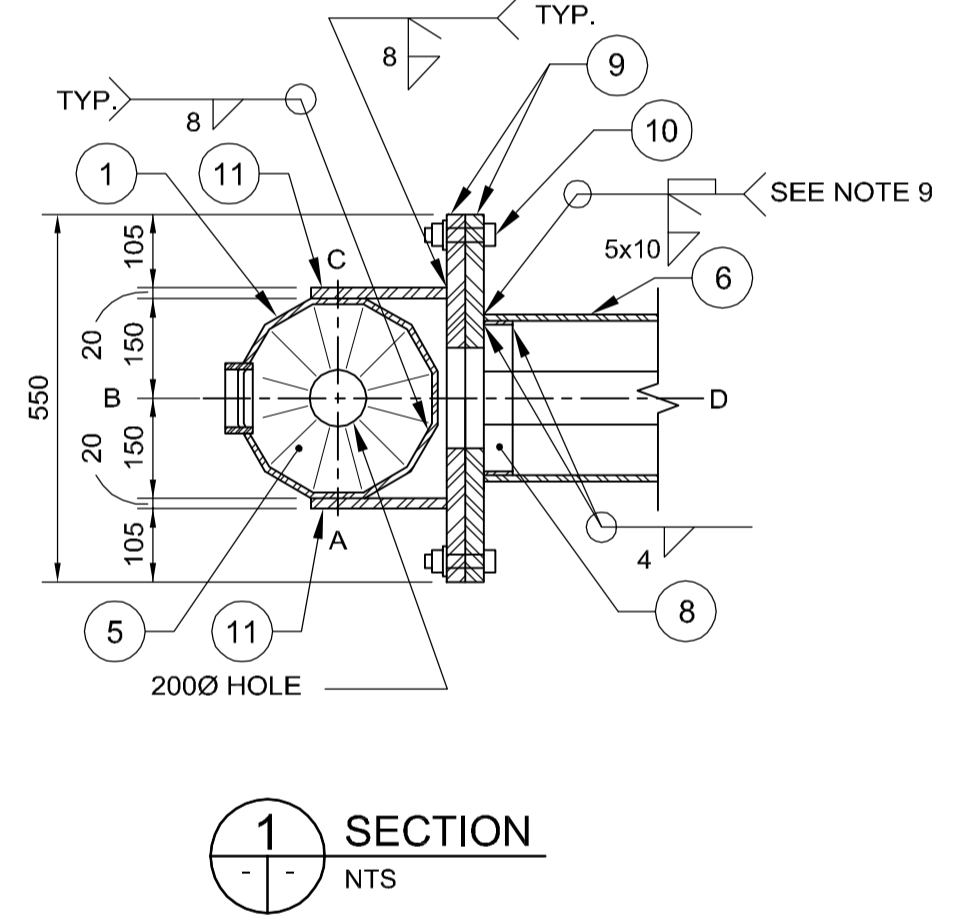
ORIENTATION
NTS



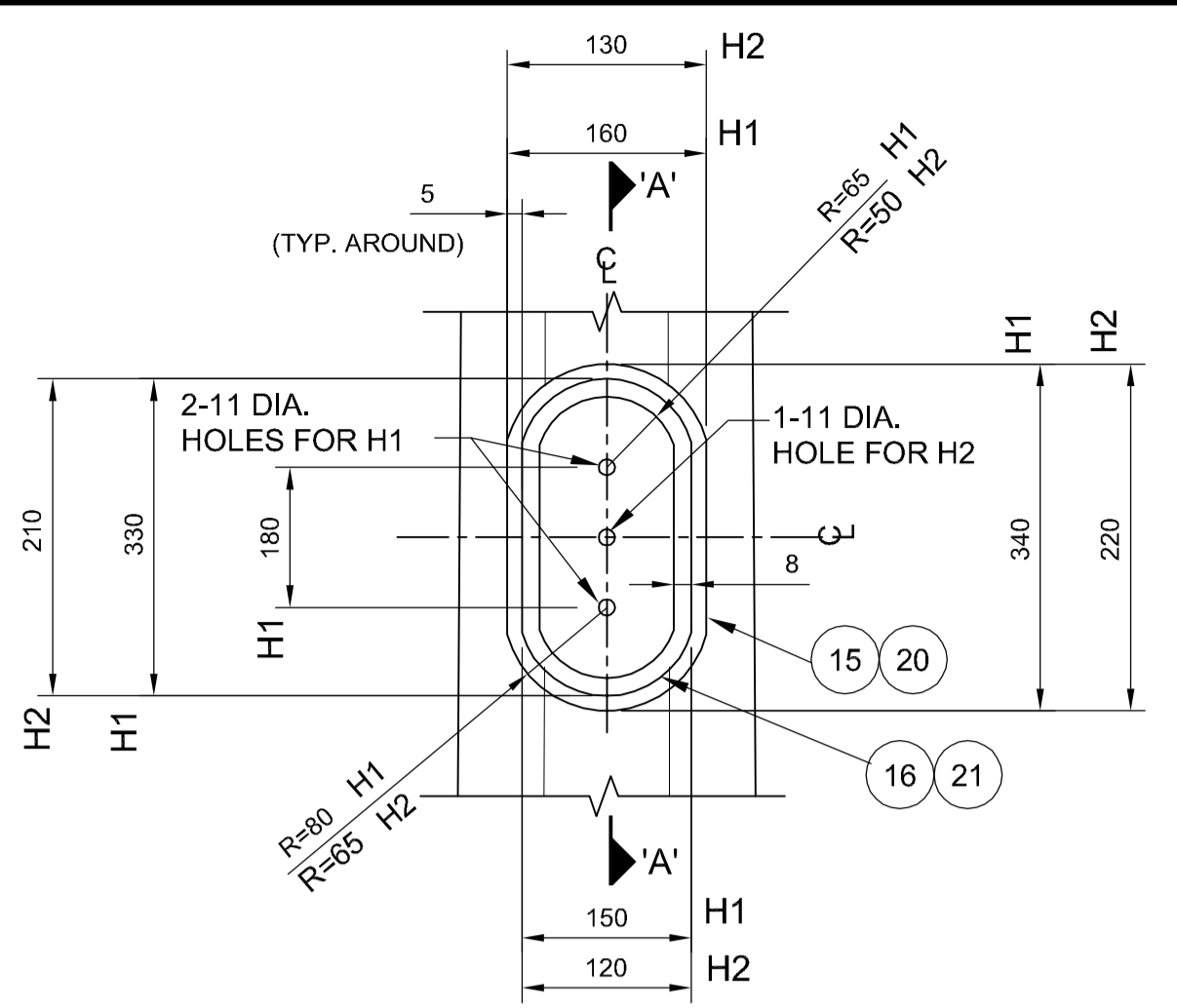
DETAIL
NTS



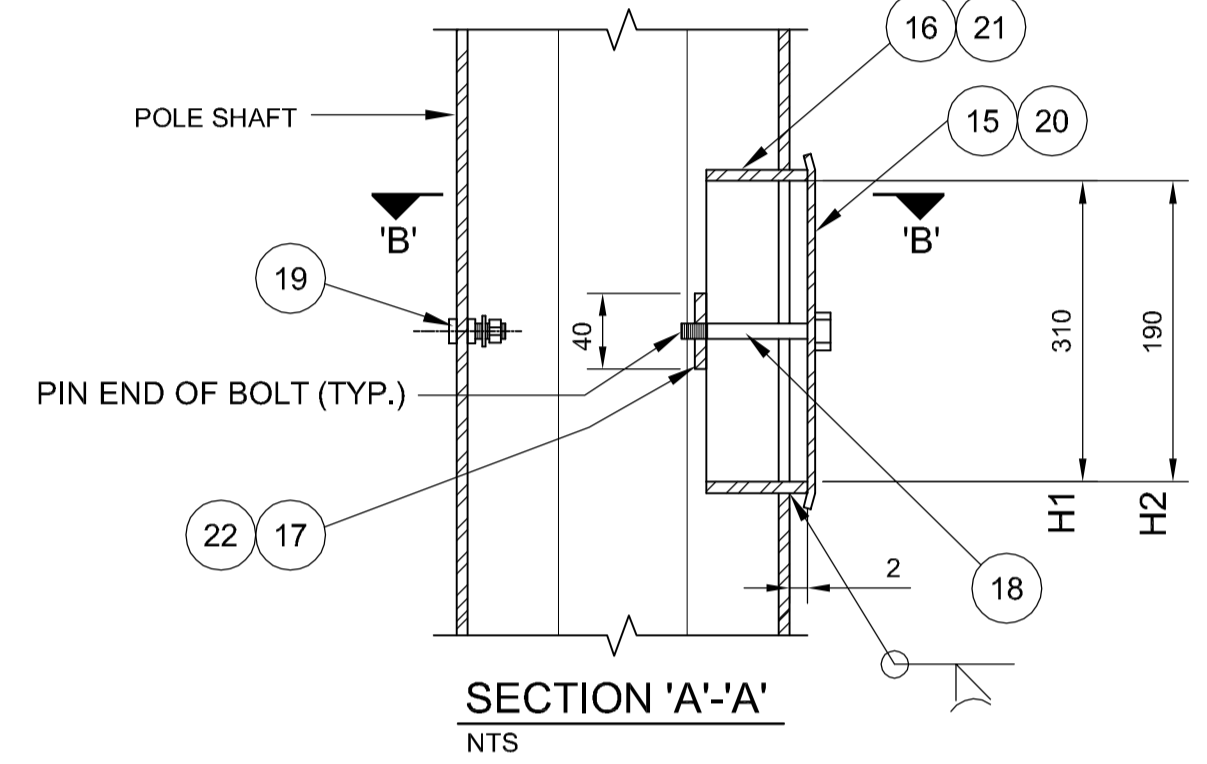
DETAIL
NTS



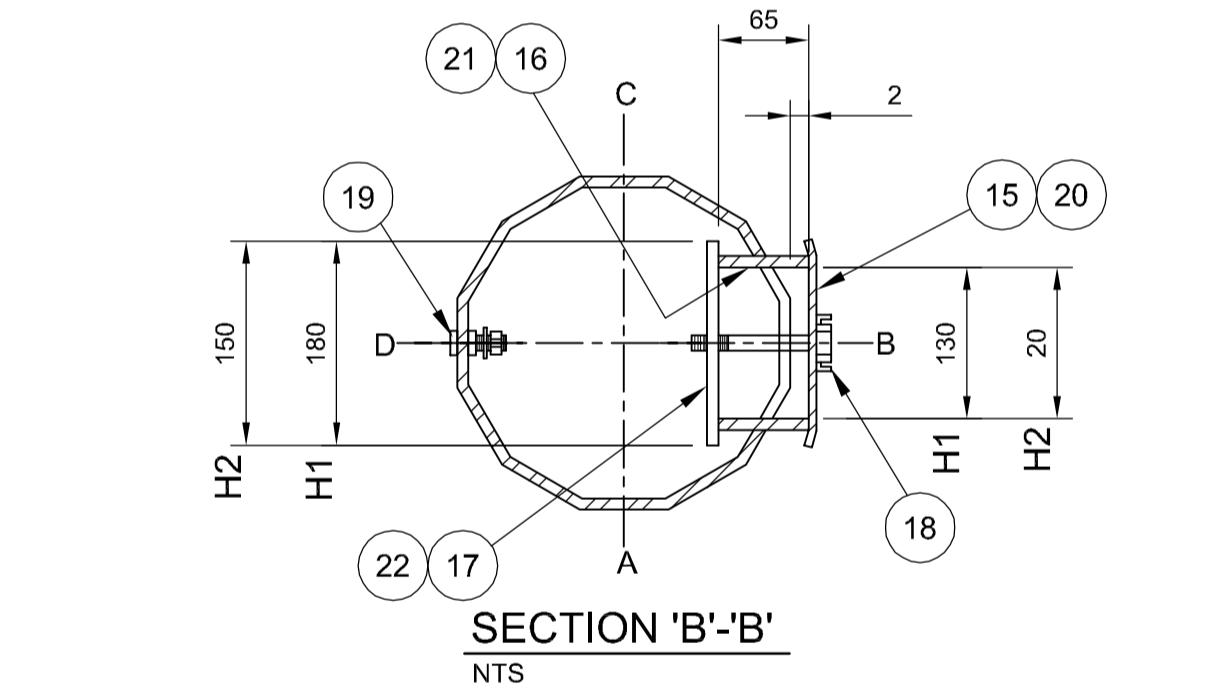
SECTION
NTS



FRONT ELEVATION
NTS



SECTION 'A'-A'
NTS

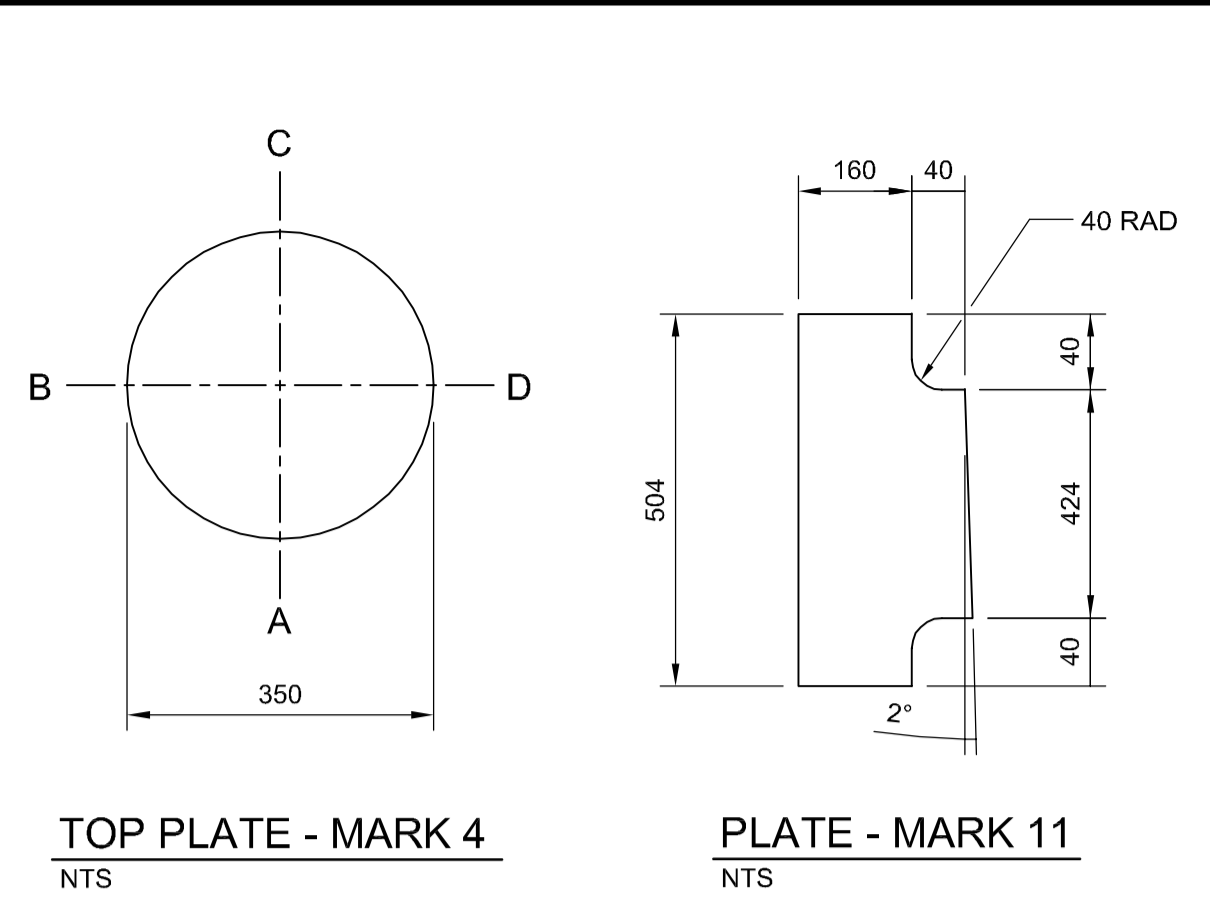


SECTION 'B'-B'
NTS

HANDHOLE - MARK H1 & H2
NTS

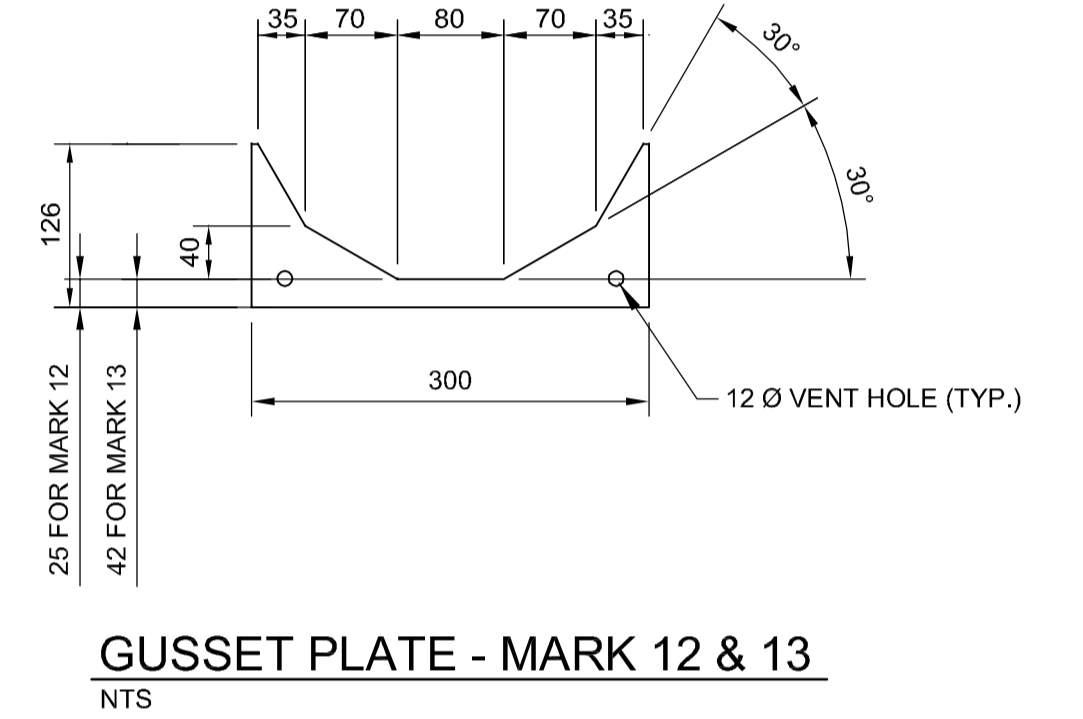
S770-V

STRUCTURE IDENTIFICATION NUMBER SIZE
NTS

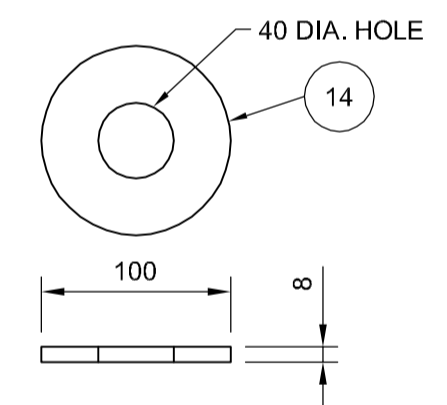


TOP PLATE - MARK 4
NTS

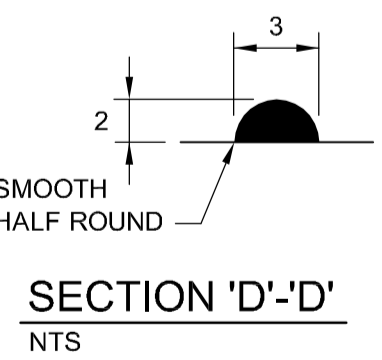
PLATE - MARK 11
NTS



GUSSET PLATE - MARK 12 & 13
NTS



WASHER DETAIL
NTS



SECTION 'D'-D'
NTS

BILL OF MATERIALS		
MK.	QTY.	DESCRIPTION
1	1	DODECAGONAL SHAFT 300 A/F x 4.763 THICK PLATE
2	1	BACK-UP STRIP 38 x 4.763
3	1	BASE PLATE 600 DIA. x 38 THICK
4	1	TOP PLATE 12 THICK
5	2	DODECAGONAL GUSSET PLATE 8 THICK
6	1	DODECAGONAL ARM 300 A/F TO 125 A/F x 4.763 THICK PLATE
7	1	DODECAGONAL END PLATE 125 A/F x 4.763 THICK
8	1	BACK-UP STRIP 38 x 4.763
9	2	FLANGE PLATE 32 THICK
10	12	25 DIA. BOLTS C/W NUT & 2 WASHERS (ASTM A325)
11	2	SIDE GUSSET PLATE 20 THICK
12	1	GUSSET PLATE 12 THICK
13	1	GUSSET PLATE 12 THICK
14	6	PLATE WASHER 8 THICK
HANDHOLE MARK H1		
15	1	COVER PLATE 11 GA. x 180x 340 (ASTM A569)
16	1	REINFORCING RING 8 x 65 x 830
* 17	2	CLAMP BAR 6 x 40 x 180
* 18	2	10 DIA. x 140 BOLT S/S (TYPE 316)
* 19	1	GROUND STUD ASSEMBLY 10 DIA. x 40
HANDHOLE MARK H2		
20	1	COVER PLATE 11 GA. x 130 x 220 (ASTM A569)
21	1	REINFORCING RING 8 x 65 x 555
* 22	1	CLAMP BAR 6 x 40 x 150
* 18	1	10 DIA. x 140 BOLT S/S (TYPE 316)
* 19	1	GROUND STUD ASSEMBLY 10 DIA. x 40

- * NOTES:**
- MARK NO. 17 & 22 C/W 8-DIA. PUNCHED 10 N.C. TAPPED AT THE CENTER OF PLATE.
 - MARK NO. 18 C/W CUP WASHER.
 - MARK NO. 19 C/W 2-10 DIA. HEX NUT, 2-TERMINAL WASHER, & 1-LOCKWASHER

GENERAL NOTES

- DESIGN DATA**
AASHTO STANDARD SPECIFICATIONS FOR STRUCTURAL SUPPORTS FOR HIGHWAY SIGNS, LUMINAIRES, AND TRAFFIC SIGNALS, 5TH EDITION, 2009, PLUS INTERIMS.
DESIGN WIND LOAD = 1.5 kPa
DESIGN ICE LOAD = 0.15 kPa
FATIGUE CATEGORY II CONSIDERING NATURAL WIND GUSTS, TRUCK INDUCED GUSTS, AND GALLOPING.
- ALL PLATE MATERIALS SHALL BE CSA G40.21 - 300W STRUCTURAL STEEL.
- ALL MATERIALS EXCEPT STAINLESS STEEL AND ALUMINUM SHALL BE HOT-DIP GALVANIZED IN ACCORDANCE WITH ASTM A123 TO A MIN. NET RETENTION OF 610 g/m²
- ALL AREAS OF DAMAGED GALVANIZING SHALL BE REPAIRED WITH SPRAY-ON COATING CALLED "ZINGA".
- SIGNS**
2 SIGN PLATES, MAXIMUM SIZE 900 x 900 mm EACH. SUPPLIED AND INSTALLED BY THE CITY OF WINNIPEG TRAFFIC SERVICES BRANCH.
- INSTALL HOLES IN THE GUSSET PLATES FOR DRAINAGE DURING CONSTRUCTION.
- PROVIDE "RAISED" IDENTIFICATION NO. WITH WELDING ELECTRODE FOR THE SIGN STRUCTURE.
- GRIND ALL SHARP POINTS AND EDGES.
- EXTERIOR WELD JOINING SHAFT TO TRANSVERSE PLATE SHALL BE AN UNEQUAL LEG COMPLETE PENETRATION WELD WITH THE LONG LEG OF THE WELD ALONG THE SHAFT TERMINATING AT 30° FROM THE SHAFT SURFACE.



METRIC

WHOLE NUMBERS INDICATE MILLIMETRES
DECIMALIZED NUMBERS INDICATE METRES

WARNING

- IF POWER EQUIPMENT OR EXPLOSIVES ARE TO BE USED FOR EXCAVATION ON THIS PROJECT THE CONTRACTOR MUST:
- NOTIFY THE GAS COMPANY OF THE PROPOSED LOCATION OF EXCAVATION.
 - TAKE PRECAUTION TO AVOID DAMAGE TO GAS COMPANY INSTALLATIONS SEE PROVINCIAL REGULATION 210/72 FOR DETAILS.
 - OBTAIN EXCAVATION PERMITS PRIOR TO CONSTRUCTION.

150 WM	WATERMAIN	150 WM	MTS	M.T.S.	150 mm W.M.	WATERMAIN	150 mm W.M.
⊕	HYDRANT VALVE	⊕		CONCRETE ASPHALT	⊕	HYDRANT VALVE	⊕
300 LDS	LAND DRAINAGE SEWER	300 LDS		PLANNING	300 mm L.D.S.	LAND DRAINAGE SEWER	300 mm L.D.S.
250 WWS	WASTE WATER SEWER	250 WWS		SIDEWALK	250 mm W.W.S.	WASTE WATER SEWER	250 mm W.W.S.
○	MANHOLE	●		PAVING STONES	— · — · —	□ PROFILE	— · — · —
○	CATCH BASIN	■		PROPERTY LINE	— · — · —	NORTH/WEST GUTTER	— · — · —
▽	CURB INLET	▽		SURVEY BAR	— · — · —	SOUTH/EAST GUTTER	— · — · —
●	TEST HOLES	●		CURB RAMP	— · — · —	NORTH/WEST T/LANE	— · — · —
— · — · —	CULVERT	— · — · —		DITCH	— · — · —	SOUTH/EAST T/LANE	— · — · —
100 GAS	GAS	100 GAS		SWALE	— · — · —		

<p>UNDERGROUND STRUCTURES</p> <p>SUPPLY U/G STRUCTURES COMMITTEE DATE</p> <p>NOTE: LOCATION OF UNDERGROUND STRUCTURES AS SHOWN ARE BASED ON THE BEST INFORMATION AVAILABLE, BUT NO GUARANTEE IS GIVEN THAT ALL EXISTING UTILITIES ARE SHOWN OR THAT THE GIVEN LOCATIONS ARE EXACT. CONFIRMATION OF EXISTENCE AND EXACT LOCATION OF ALL SERVICES MUST BE OBTAINED FROM THE INDIVIDUAL UTILITIES BEFORE PROCEEDING WITH CONSTRUCTION.</p>	<p>B.M. 654008 N: 5515764.610 E: 633359.697 ELEV. 232.463 m</p>	<p>DESIGNED BY: CDW</p> <p>DRAWN BY: JD</p> <p>CHECKED BY: SSR</p> <p>APPROVED BY: DPK</p> <p>HOR. SCALE: AS NOTED</p> <p>VERTICAL: AS NOTED</p> <p>2013-04-05</p>	<p>DESIGN TEAM</p> <p>DILLON CONSULTING</p>	<p>ENGINEER'S SEAL</p> <p>PROVINCE OF MANITOBA ORIGINAL STAMPED BY S.S. RIHAL 2013-04-05 REGISTERED PROFESSIONAL ENGINEER</p> <p>CONSULTANT PROJECT NUMBER: 12-6606</p>	<p>THE CITY OF WINNIPEG PUBLIC WORKS DEPARTMENT</p> <p>WWARP III - KENASTON BLVD EXTENSION CONTRACT 3</p> <p>S770 - FABRICATION DETAILS</p>	<p>CITY DRAWING NUMBER: S770-2013-02</p> <p>SHEET: 23 OF 23</p> <p>CONSULTANT DRAWING NUMBER</p>
---	---	--	--	---	--	--

G:\CAD\126606\Contract\126606-09-STR-CON.dwg