

WEST MULTI-USE PATH SOUTH OF WAVERLEY CONTROL LINE		
Station	Elevation (m)	Grade Out (%)
6+000.000	232.600	0.00%
6+300.000	232.600	-0.20%
6+350.000	232.500	0.00%
6+380.000	232.500	0.20%
6+430.000	232.600	0.00%
6+540.200	232.600	0.32%
6+600.000	232.790	-0.16%
6+640.000	232.726	0.70%
6+660.000	232.866	0.83%
6+712.500	233.300	0.00%
6+733.204	233.300	

EAST MULTI-USE PATH SOUTH OF WAVERLEY CONTROL LINE		
Station	Elevation (m)	Grade Out (%)
4+000.000	232.600	0.00%
4+300.000	232.600	-0.20%
4+350.000	232.500	0.00%
4+380.000	232.500	0.20%
4+430.000	232.600	0.00%
4+563.100	232.600	0.44%
4+620.000	232.850	-0.18%
4+660.000	232.778	0.61%
4+680.000	232.900	0.57%
4+701.923	233.025	1.01%
4+743.846	233.450	

CATCH BASIN, CATCH PIT STRUCTURE AND LOCATION SCHEDULE					
ID	STA	O/S NB KENASTON CONTROL LINE	RIM ELEV	BTM ELEV	INV ELEV
CP2	1+940	9.9 L	232.490	231.580	231.590
CB1	1+807	39.0 L	231.300	229.200	229.800
CB2	1+818	39.0 L	231.300	229.200	229.800
CB3	1+807	20.5 R	231.300	229.200	229.800
CB4	1+818	20.5 R	231.300	229.200	229.800
CB5	1+818	9.3 L	232.139	230.039	230.639
MH1	1+816	48.0 L	232.450	-	-
MH2	1+816	29.6 L	232.450	-	-

DITCH CB - SD-025  
MH - SD-011



**METRIC**  
WHOLE NUMBERS INDICATE MILLIMETRES  
DECIMALIZED NUMBERS INDICATE METRES

**WARNING**

- IF POWER EQUIPMENT OR EXPLOSIVES ARE TO BE USED FOR EXCAVATION ON THIS PROJECT THE CONTRACTOR MUST:
1. NOTIFY THE GAS COMPANY OF THE PROPOSED LOCATION OF EXCAVATION.
  2. TAKE PRECAUTION TO AVOID DAMAGE TO GAS COMPANY INSTALLATIONS SEE PROVINCIAL REGULATION 210/72 FOR DETAILS.
  3. OBTAIN EXCAVATION PERMITS PRIOR TO CONSTRUCTION.

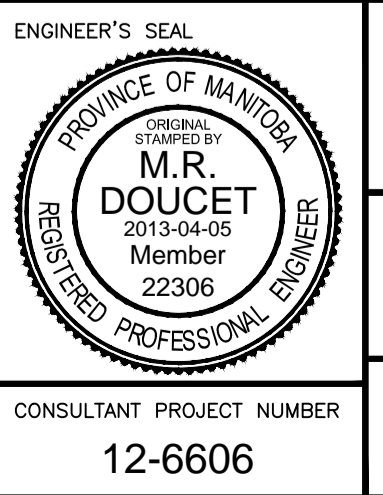
150 W.M.	WATERMAIN	150 W.M.	MTS	M.T.S.	MTS	150 mm W.M.	WATERMAIN	150 mm W.M.
	HYDRANT VALVE			CONCRETE			HYDRANT VALVE	
	LAND DRAINAGE SEWER			ASPHALT			LAND DRAINAGE SEWER	
	WASTE WATER SEWER			PLANING			WASTE WATER SEWER	
	MANHOLE			PAVING STONES			MANHOLE	
	CATCH BASIN			PROPERTY LINE			NORTH/WEST GUTTER	
	CURB INLET			SURVEY BAR			SOUTH/EAST GUTTER	
	TEST HOLES			CURB RAMP			NORTH/WEST T/LANE	
	CULVERT			DITCH			SOUTH/EAST T/LANE	
	GAS			SWALE				
	EXISTING		PROPOSED	EXISTING			LEGEND-PROFILE	
	LEGEND-PLAN		PROPOSED	EXISTING			LEGEND-PROFILE	

UNDERGROUND STRUCTURES	
SUPPLY U/G STRUCTURES COMMITTEE	DATE

B.M. 654008 N: 5515764.610 E: 633359.697 ELEV. 232.463 m	

DESIGNED BY	MRD
DRAWN BY	PMW
CHECKED BY	DBW
APPROVED BY	DPK

DESIGN TEAM	



**THE CITY OF WINNIPEG**  
PUBLIC WORKS DEPARTMENT

WWARP PART 3 - CONTRACT 3  
STA: 1+450 TO STA: 2+922.4

PLAN PROFILE KENASTON  
STA: 1+770 TO 2+100

CITY DRAWING NUMBER: P-3344-6  
SHEET: 6 OF 23  
CONSULTANT DRAWING NUMBER: 12-6606

G:\CAD\126606\Contract\3\Current\Plan\_Profile.dwg