

WEST MULTI-USE PATH SOUTH OF WAVERLEY CONTROL LINE

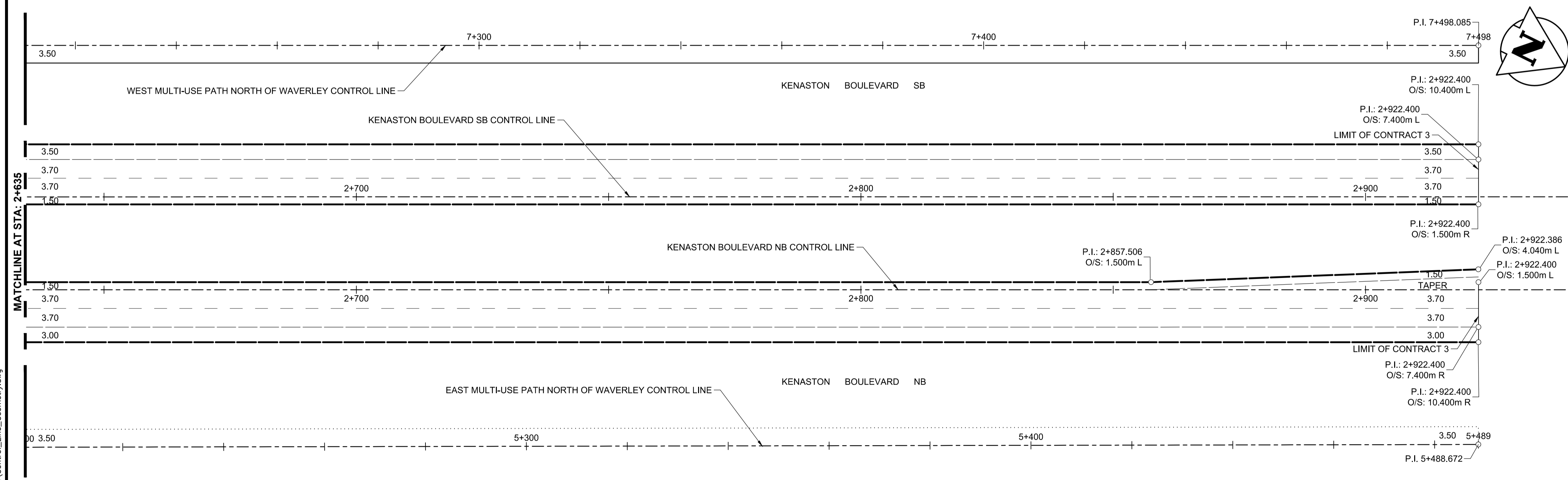
CONTROL POINT	STATION	COORDINATES		CURVE TABLE ALIGNMENTS					
		NORTHING	EASTING	CURVE #	RADIUS	DELTA	Tc	L	LC
P.I.	6+000	5514912.248	630647.842	15	20	24°59'15"	4.4316	8.722	8.653
T.C.	6+348.315	5515234.313	630515.187	16	15	49°59'27"	6.9931	13.088	12.676
C.T.	6+357.037	5515241.412	630510.239	18	55	21°45'29"	10.5705	20.886	20.761
T.C.	6+359.720	5515243.229	630508.264	19	60	29°28'08"	15.7793	30.860	30.521
C.T.	6+372.808	5515254.951	630503.438	20	60	19°27'03"	10.2834	20.369	20.271
T.C.	6+375.488	5515257.628	630503.561	21	15	44°22'21"	6.1172	11.617	11.329
C.T.	6+384.216	5515266.158	630502.074	ALL COORDINATES BASED ON A LOCAL SYSTEM					
T.C.	6+544.938	5515414.769	630440.865						
C.T.	6+565.824	5515432.128	630429.477						
T.C.	6+578.517	5515441.237	630420.637						
C.T.	6+609.377	5515467.824	630406.650						
T.C.	6+649.475	5515506.614	630395.492						
C.T.	6+669.844	5515525.075	630387.118						
T.C.	6+713.658	5515561.345	630362.538						
C.T.	6+725.275	5515572.428	630360.194						
P.I.	6+734.446	5515581.453	630361.825						

EAST MULTI-USE PATH SOUTH OF WAVERLEY CONTROL LINE

CONTROL POINT	STATION	COORDINATES		CURVE TABLE ALIGNMENTS					
		NORTHING	EASTING	CURVE #	RADIUS	DELTA	Tc	L	LC
P.I.	4+000	5514942.218	630720.723	23	15	50°00'00"	6.9946	13.090	12.679
T.C.	4+348.361	5515264.359	630588.130	24	20	25°00'00"	4.4339	8.727	8.658
C.T.	4+357.079	5515272.880	630586.645	25	60	21°44'46"	11.5249	22.773	22.636
T.C.	4+359.767	5515275.564	630586.767	26	60	29°28'08"	15.7793	30.860	30.521
C.T.	4+372.857	5515287.286	630581.936	27	60	12°07'29"	6.3723	12.697	12.673
T.C.	4+373.176	5515287.502	630581.701	28	15	74°23'15"	11.3830	19.475	18.135
C.T.	4+381.902	5515294.603	630576.748	ALL COORDINATES BASED ON A LOCAL SYSTEM					
T.C.	4+563.108	5515462.139	630507.703						
C.T.	4+585.881	5515484.319	630503.180						
T.C.	4+600.165	5515498.602	630503.018						
C.T.	4+631.025	5515528.029	630494.920						
T.C.	4+672.593	5515563.985	630474.060						
C.T.	4+685.290	5515575.557	630468.894						
T.C.	4+728.955	5515615.183	630456.022						
C.T.	4+746.429	5515625.536	630441.132						
P.I.	4+750.213	5515625.379	630437.351						

EAST MULTI-USE PATH NORTH OF WAVERLEY CONTROL LINE

CONTROL POINT	STATION	COORDINATES		CURVE TABLE ALIGNMENTS					
		NORTHING	EASTING	CURVE #	RADIUS	DELTA	Tc	L	LC
P.I.	4+810	5515683.156	630427.182	C33	30	46°28'32"	12.8815	24.335	23.673
T.C.	4+811.356	5515684.489	630427.432	C34	60	19°01'26"	10.0535	19.922	19.830
C.T.	4+835.691	5515707.589	630422.257	C35	60	16°14'50"	8.5645	17.014	16.957
T.C.	4+868.157	5515733.900	630403.236	C36	60	10°34'56"	5.5567	11.082	11.066
C.T.	4+888.078	5515751.669	630394.434	ALL COORDINATES BASED ON A LOCAL SYSTEM					
T.C.	4+920.461	5515782.663	630385.052						
C.T.	4+937.475	5515798.036	630377.896						
T.C.	4+974.315	5515828.902	630357.783						
C.T.	4+985.397	5515838.691	630352.623						
P.I.	5+488.672	5516303.637	630159.983						



EAST MULTI-USE PATH NORTH OF WAVERLEY CONTROL LINE

CONTROL POINT	STATION	COORDINATES		CURVE TABLE ALIGNMENTS					
		NORTHING	EASTING	CURVE #	RADIUS	DELTA	Tc	L	LC
P.I.	7+498.085	5515922.400	630427.182	C33	30	46°28'32"	12.8815	24.335	23.673
T.C.	7+499.441	5515922.400	630427.432	C34	60	19°01'26"	10.0535	19.922	19.830
C.T.	7+500.797	5515922.400	630422.257	C35	60	16°14'50"	8.5645	17.014	16.957
T.C.	7+502.153	5515922.400	630403.236	C36	60	10°34'56"	5.5567	11.082	11.066
C.T.	7+503.509	5515922.400	630394.434	ALL COORDINATES BASED ON A LOCAL SYSTEM					
T.C.	7+504.865	5515922.400	630385.052						
C.T.	7+506.221	5515922.400	630377.896						
T.C.	7+507.577	5515922.400	630357.783						
C.T.	7+508.933	5515922.400	630352.623						
P.I.	7+510.289	5515922.400	630159.983						



METRIC
WHOLE NUMBERS INDICATE MILLIMETRES
DECIMALIZED NUMBERS INDICATE METRES

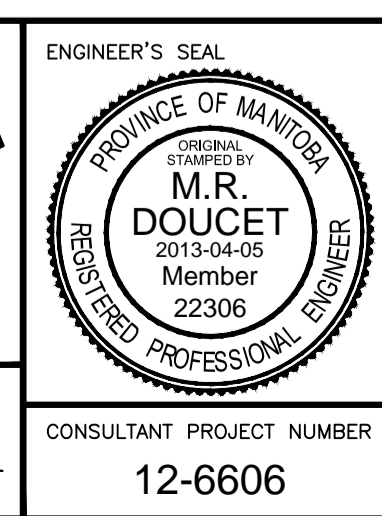
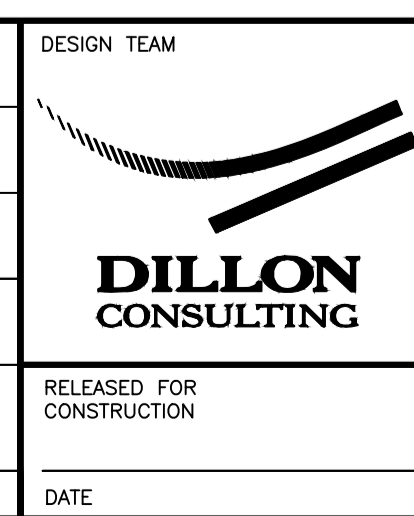
- WARNING**
- IF POWER EQUIPMENT OR EXPLOSIVES ARE TO BE USED FOR EXCAVATION ON THIS PROJECT THE CONTRACTOR MUST:
- NOTIFY THE GAS COMPANY OF THE PROPOSED LOCATION OF EXCAVATION.
 - TAKE PRECAUTION TO AVOID DAMAGE TO GAS COMPANY INSTALLATIONS SEE PROVINCIAL REGULATION 210/72 FOR DETAILS.
 - OBTAIN EXCAVATION PERMITS PRIOR TO CONSTRUCTION.

150 W.M.	WATERMAIN	150 W.M.	MTS	M.T.S.	MTS	150 mm W.M.	WATERMAIN	150 mm W.M.
⊕	HYDRANT VALVE	⊕	MTS	CONCRETE ASPHALT PLANING	MTS	⊕	HYDRANT VALVE	⊕
300 LDS	LAND DRAINAGE SEWER	300 LDS	MTS	PAVING STONES	300 mm L.D.S.	300 LDS	LAND DRAINAGE SEWER	300 mm L.D.S.
250 WWS	WASTE WATER SEWER	250 WWS	MTS	PROPERTY LINE	250 mm W.W.S.	250 WWS	WASTE WATER SEWER	250 mm W.W.S.
○	MANHOLE	●	MTS	SURVEY BAR	---	○	MANHOLE	●
□	CATCH BASIN	■	MTS	CURB RAMP	---	□	CATCH BASIN	■
▽	CURB INLET	▼	MTS	DITCH	---	▽	CURB INLET	▼
⊙	TEST HOLES	⊙	MTS	SWALE	---	⊙	TEST HOLES	⊙
⊘	CULVERT	⊘	MTS	EXISTING	---	⊘	CULVERT	⊘
100 GAS	GAS	100 GAS	MTS	PROPOSED	---	100 GAS	GAS	100 GAS
---	EXISTING	---	MTS	LEGEND-PLAN	---	---	EXISTING	---
---	LEGEND-PLAN	---	MTS	PROPOSED	---	---	LEGEND-PROFILE	---
---	PROPOSED	---	MTS	EXISTING	---	---	PROPOSED	---
---	EXISTING	---	MTS	LEGEND-PLAN	---	---	LEGEND-PROFILE	---
---	LEGEND-PLAN	---	MTS	PROPOSED	---	---	PROPOSED	---

UNDERGROUND STRUCTURES	DATE
SUPP. U/G STRUCTURES COMMITTEE	
NOTE:	
LOCATION OF UNDERGROUND STRUCTURES AS SHOWN ARE BASED ON THE BEST INFORMATION AVAILABLE, BUT NO GUARANTEE IS GIVEN THAT ALL EXISTING UTILITIES ARE SHOWN OR THAT THE GIVEN LOCATIONS ARE EXACT. CONFIRMATION OF EXISTENCE AND EXACT LOCATION OF ALL SERVICES MUST BE OBTAINED FROM THE INDIVIDUAL UTILITIES BEFORE PROCEEDING WITH CONSTRUCTION.	

B.M.	654008 N: 5515764.610 E: 633359.697
ELEV.	232.463 m
DESIGNED BY	MRD
DRAWN BY	PMW
CHECKED BY	DBW
APPROVED BY	DPK
HOR. SCALE	1:500
VERTICAL	
RELEASED FOR CONSTRUCTION	
DATE	2013-04-05

NO.	REVISIONS	DATE	BY
1	ISSUED FOR TENDER	13-04-05	MRD
0	ISSUED FOR 90% REVIEW	13-02-22	MRD



THE CITY OF WINNIPEG PUBLIC WORKS DEPARTMENT	
WWARP PART 3 - CONTRACT 3 STA: 1+450 TO STA: 2+922.4	CITY DRAWING NUMBER P-3344-4
HORIZONTAL GEOMETRY STA: 2+360 TO 2+922.4	SHEET 4 OF 23 CONSULTANT DRAWING NUMBER
CONSULTANT PROJECT NUMBER 12-6606	

G:\CAD\126606\Contract\Control_3\Current\Control_Line_Geometry.dwg