

MATCHLINE AT STA: 1+795

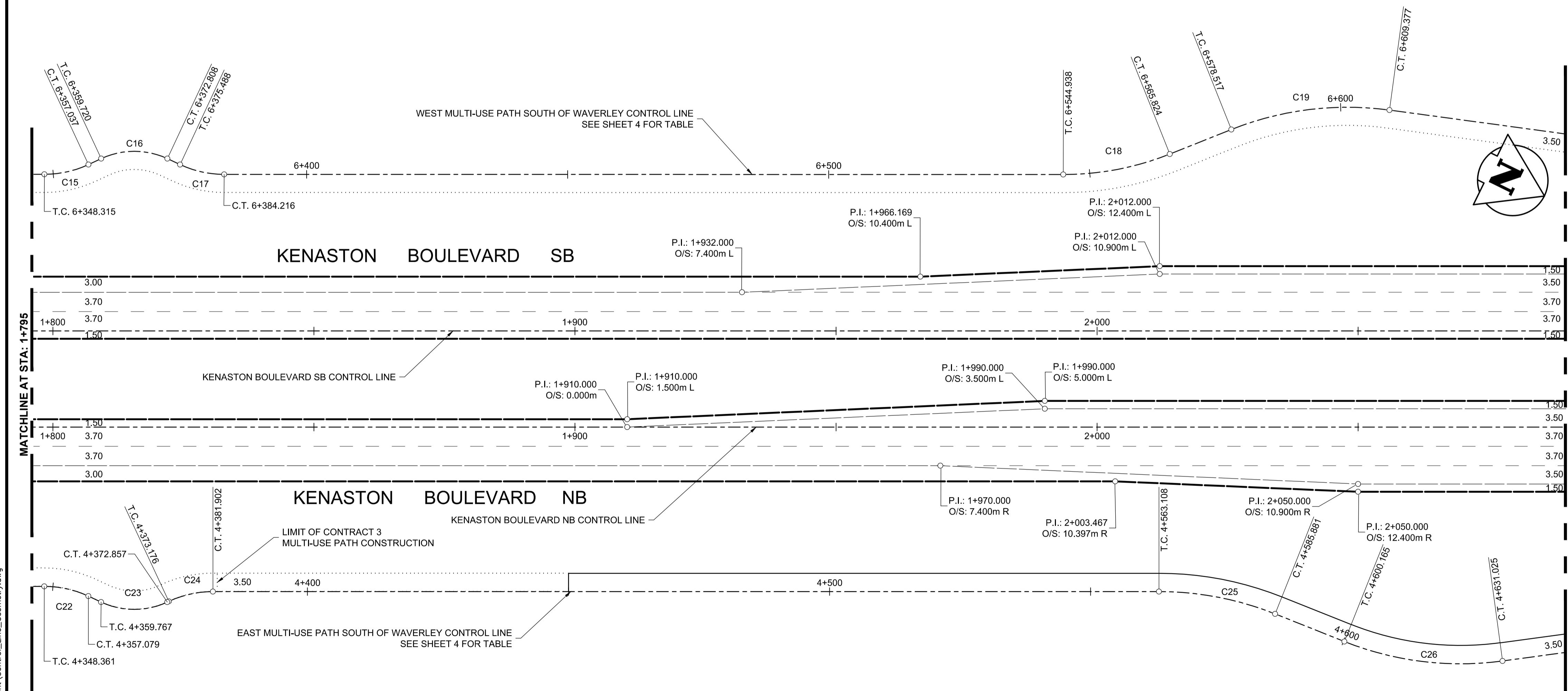
KENASTON BOULEVARD SB CONTROL LINE			
CONTROL POINT	STATION	COORDINATES	
		NORTHING	EASTING
P.I.	1+450	5514923.645	630675.657
P.I.	2+922.4	5516284.970	630114.624

ALL COORDINATES BASED ON A LOCAL SYSTEM

KENASTON BOULEVARD NB CONTROL LINE			
CONTROL POINT	STATION	COORDINATES	
		NORTHING	EASTING
P.I.	1+450	5514930.656	630692.669
P.I.	2+922.4	5516291.981	630131.636

ALL COORDINATES BASED ON A LOCAL SYSTEM

CONTROL POINT	UTM COORDINATES		LOCAL COORDINATES		ELEVATION
	NORTHING	EASTING	NORTHING	EASTING	
1	5517670.277	628208.314	5517670.018	628207.658	232.322
2	5514440.199	628638.914	5514439.252	628638.423	233.541
3	5514974.765	631479.207	5514973.800	631479.256	232.406
4	5519555.808	631072.871	5519555.923	631072.872	231.600



MATCHLINE AT STA: 1+795

MATCHLINE AT STA: 2+095



METRIC
WHOLE NUMBERS INDICATE MILLIMETRES
DECIMALIZED NUMBERS INDICATE METRES

- WARNING**
- IF POWER EQUIPMENT OR EXPLOSIVES ARE TO BE USED FOR EXCAVATION ON THIS PROJECT THE CONTRACTOR MUST:
- NOTIFY THE GAS COMPANY OF THE PROPOSED LOCATION OF EXCAVATION.
 - TAKE PRECAUTION TO AVOID DAMAGE TO GAS COMPANY INSTALLATIONS SEE PROVINCIAL REGULATION 210/72 FOR DETAILS.
 - OBTAIN EXCAVATION PERMITS PRIOR TO CONSTRUCTION.

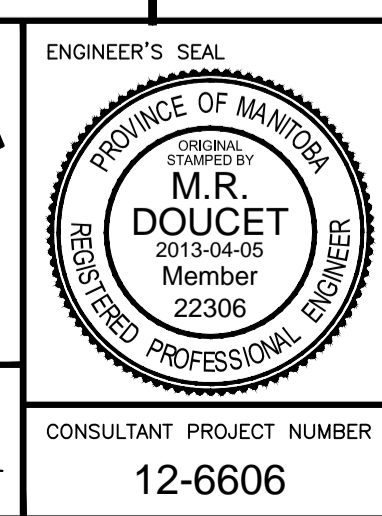
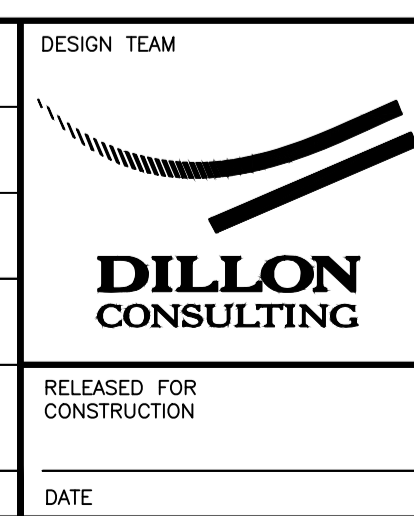
150 WM	WATERMAIN	150 WM	MTS	M.T.S.	150 mm W.M.	WATERMAIN	150 mm W.M.
HYDRANT VALVE	HYDRANT VALVE	CONCRETE ASPHALT	CONCRETE ASPHALT	CONCRETE ASPHALT	HYDRANT VALVE	HYDRANT VALVE	HYDRANT VALVE
300 LDS LAND DRAINAGE SEWER	300 LDS LAND DRAINAGE SEWER	PLANNING	PLANNING	PLANNING	300 mm L.D.S. LAND DRAINAGE SEWER	300 mm L.D.S. LAND DRAINAGE SEWER	300 mm L.D.S. LAND DRAINAGE SEWER
250 WWS WASTE WATER SEWER	250 WWS WASTE WATER SEWER	SIDEWALK	SIDEWALK	SIDEWALK	250 mm W.W.S. WASTE WATER SEWER	250 mm W.W.S. WASTE WATER SEWER	250 mm W.W.S. WASTE WATER SEWER
MANHOLE	MANHOLE	PAVING STONES	PAVING STONES	PAVING STONES	PROPERTY LINE	PROPERTY LINE	PROPERTY LINE
CATCH BASIN	CATCH BASIN	SURVEY BAR	SURVEY BAR	SURVEY BAR	NORTH/WEST GUTTER	NORTH/WEST GUTTER	NORTH/WEST T/LANE
CURB INLET	CURB INLET	CURB RAMP	CURB RAMP	CURB RAMP	SOUTH/EAST GUTTER	SOUTH/EAST GUTTER	NORTH/WEST T/LANE
TEST HOLES	TEST HOLES	DITCH	DITCH	DITCH	SOUTH/EAST T/LANE	SOUTH/EAST T/LANE	SOUTH/EAST T/LANE
CULVERT	CULVERT	SWALE	SWALE	SWALE	EXISTING	EXISTING	EXISTING
100 GAS	100 GAS	LEGEND-PLAN	LEGEND-PLAN	LEGEND-PLAN	PROPOSED	PROPOSED	PROPOSED

UNDERGROUND STRUCTURES	DATE
SUPPL. U/G STRUCTURES COMMITTEE	

NOTE:
LOCATION OF UNDERGROUND STRUCTURES AS SHOWN ARE BASED ON THE BEST INFORMATION AVAILABLE. BUT NO GUARANTEE IS GIVEN THAT ALL EXISTING UTILITIES ARE SHOWN OR THAT THE GIVEN LOCATIONS ARE EXACT. CONFIRMATION OF EXISTENCE AND EXACT LOCATION OF ALL SERVICES MUST BE OBTAINED FROM THE INDIVIDUAL UTILITIES BEFORE PROCEEDING WITH CONSTRUCTION.

B.M. 654008 N: 5515764.610 E: 633359.697	ELEV. 232.463 m
DESIGNED BY	MRD
DRAWN BY	PMW
CHECKED BY	DBW
APPROVED BY	DPK
HOR. SCALE	1:500
RELEASED FOR CONSTRUCTION	DATE

DESIGNED BY	MRD	DATE	2013-04-05
DRAWN BY	PMW	DATE	2013-04-05
CHECKED BY	DBW	DATE	2013-04-05
APPROVED BY	DPK	DATE	2013-04-05



		CITY DRAWING NUMBER P-3344- 2
WWARP PART 3 - CONTRACT 3 STA: 1+450 TO STA: 2+922.4		SHEET 2 OF 23
HORIZONTAL GEOMETRY STA: 1+450 TO 2+095		CONSULTANT DRAWING NUMBER 12-6606