



Canada



THE CITY OF WINNIPEG

PUBLIC WORKS DEPARTMENT
ENGINEERING DIVISION

WAVERLEY WEST ARTERIAL ROADS PROJECT (WWARP) - PART 3 - CONTRACT 3

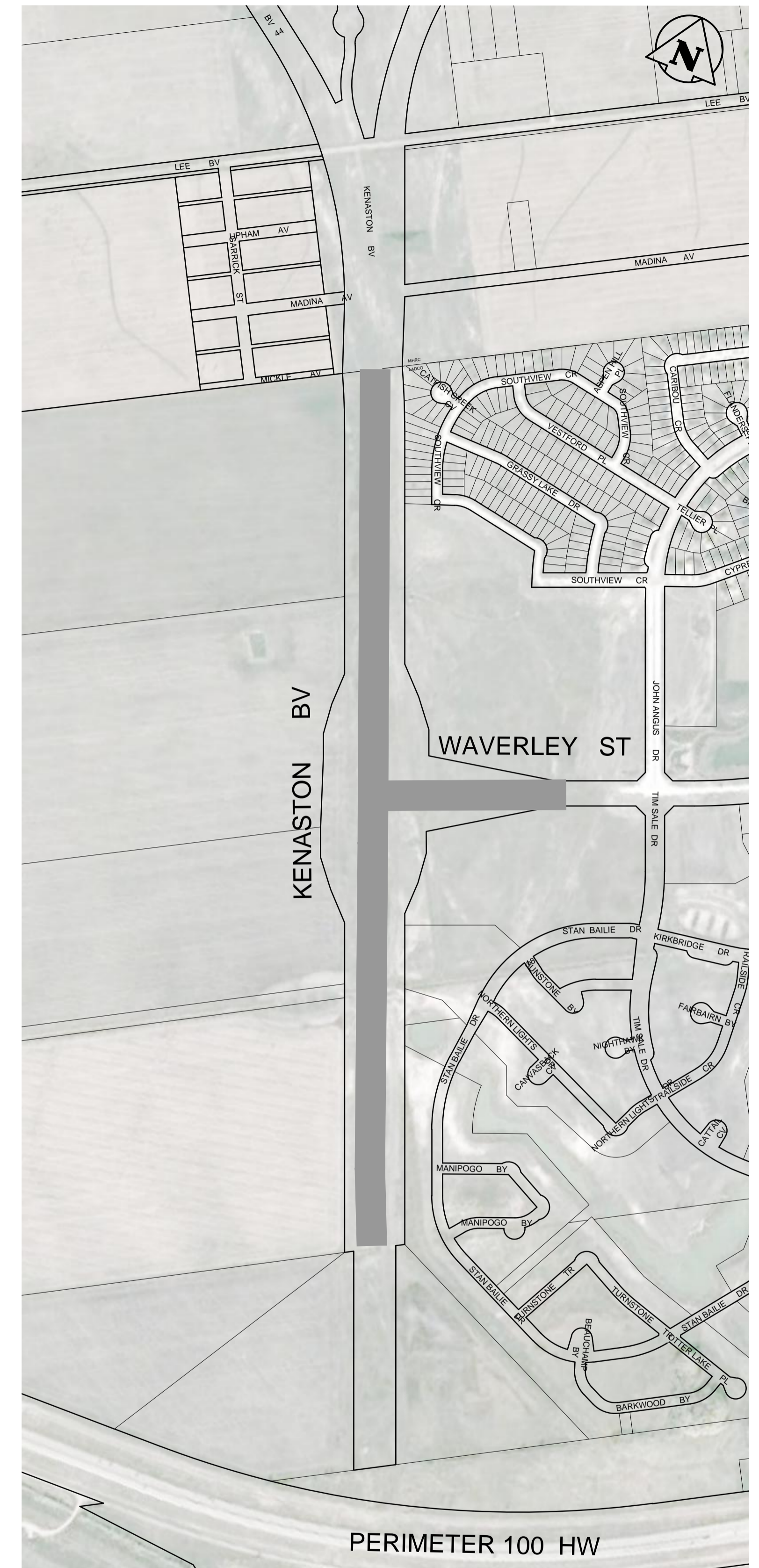
STA. 1+450 - STA. 2+922.4

KENASTON BOULEVARD EXTENSION AND WAVERLEY STREET EXTENSION
NEW ROAD CONSTRUCTION AND ASSOCIATED WORKS

BID OPPORTUNITY 231-2013

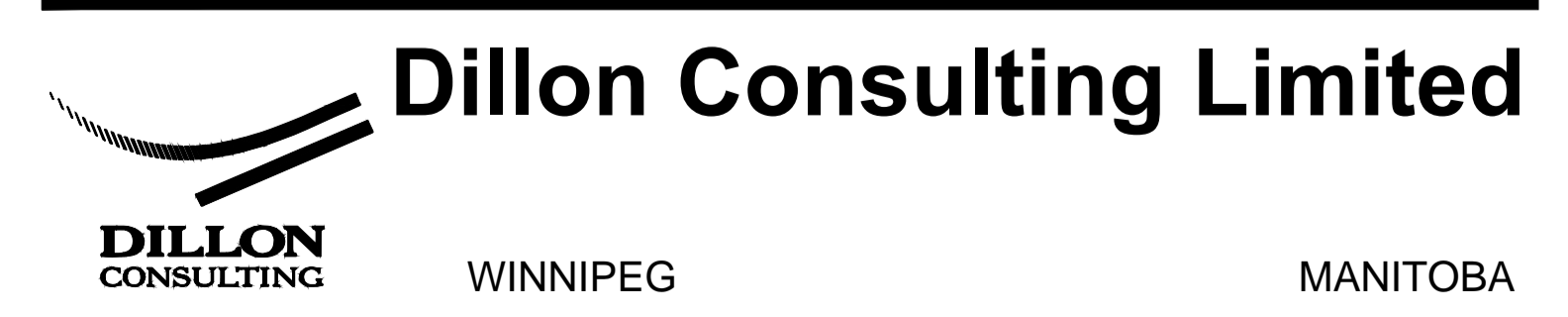
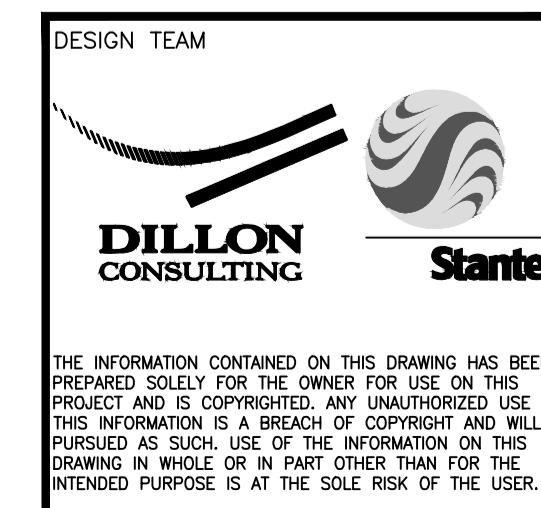
DRAWING INDEX WWARP - PART 3 - CONTRACT3

SHEET No.	SHEET TITLE	CITY DWG. No.
0	COVER SHEET	P-3344-0
1	GENERAL ARRANGEMENT	P-3344-1
2	HORIZONTAL GEOMETRY STA: 1+450 TO 2+095	P-3344-2
3	HORIZONTAL GEOMETRY WAVERLEY INTERSECTION	P-3344-3
4	HORIZONTAL GEOMETRY STA: 2+360 TO 2+922.4	P-3344-4
5	PLAN PROFILE KENASTON STA: 1+450 TO 1+770	P-3344-5
6	PLAN PROFILE KENASTON STA: 1+770 TO 2+100	P-3344-6
7	PLAN PROFILE KENASTON STA: 2+100 TO 2+430	P-3344-7
8	PLAN PROFILE KENASTON STA: 2+430 TO 2+690	P-3344-8
9	PLAN PROFILE KENASTON STA: 2+690 TO 2+922.4	P-3344-9
10	PLAN PROFILE WAVERLEY STA: 0+436 TO 0+818	P-3344-10
11	WAVERLEY INTERSECTION RIGHT TURN PLAN & PROFILES	P-3344-11
12	WAVERLEY INTERSECTION GRADING PLAN	P-3344-12
13	CROSS SECTIONS	P-3344-13
14	CROSS SECTIONS	P-3344-14
15	DETAILS	P-3344-15
16	DETAILS	P-3344-16
17	S769 - OHSS AND GUARDRAIL LOCATION	S769-2013-01
18	S769 - ELEVATION AND PILE DETAILS	S769-2013-02
19	S769 - FABRICATION DETAILS	S769-2013-03
20	S769 - GUARDRAIL DETAILS	S769-2013-04
21	FLEAT 350 DETAILS	S769-2013-05
22	S770 - LOCATION AND DETAILS	S770-2013-01
23	S770 - FABRICATION DETAILS	S770-2013-02



RELEASED FOR CONSTRUCTION BY:

MICHELLE HARMS, P.ENG. DATE:



CONSULTANT DRAWING No. CITY DRAWING No. SHEET OF SHEET
P-3344-00 0 23