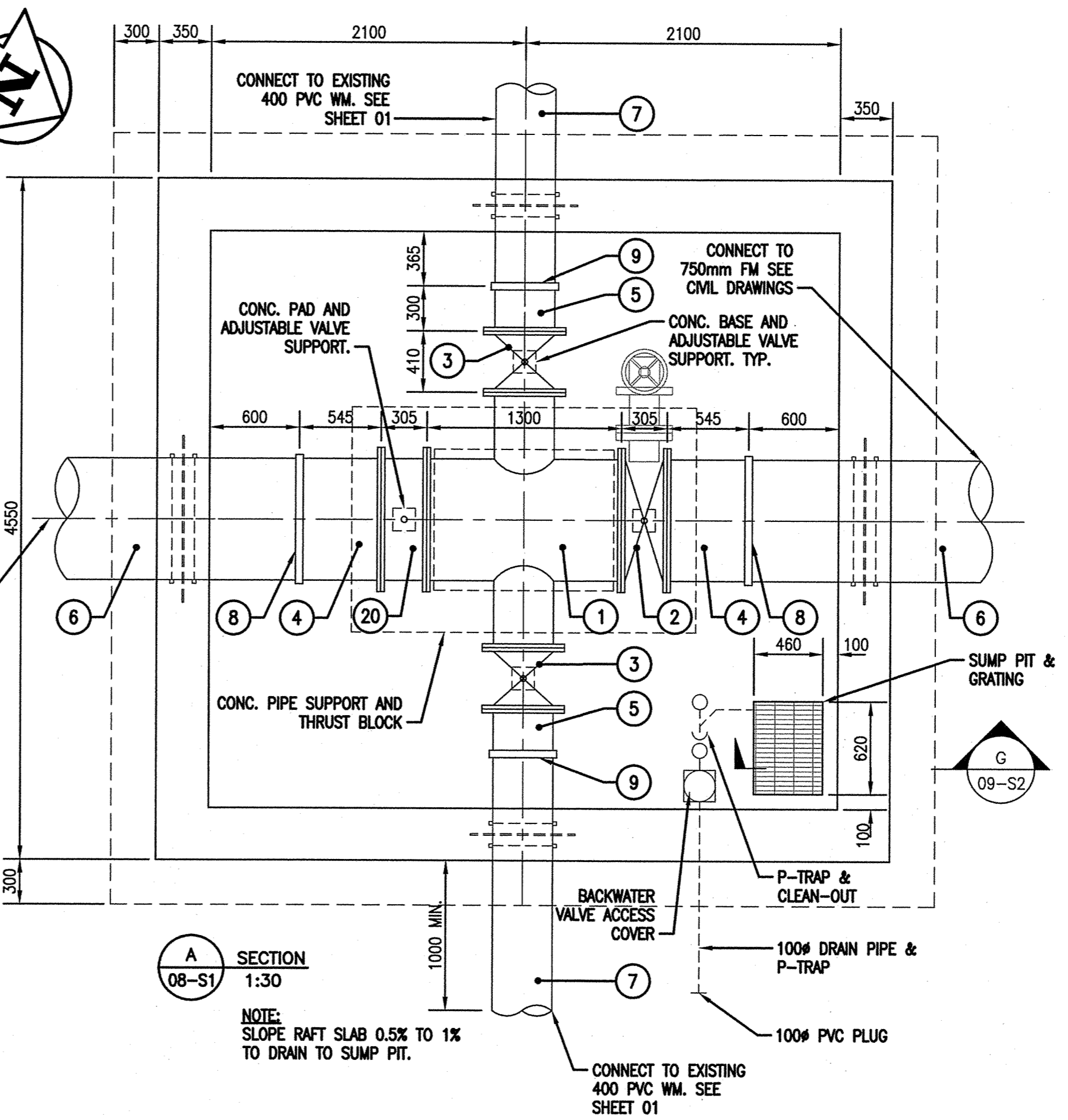
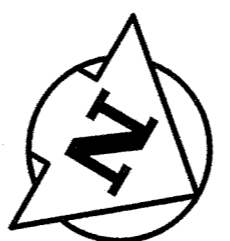


PIPE CROSS BENCHING LAYOUT
1:30

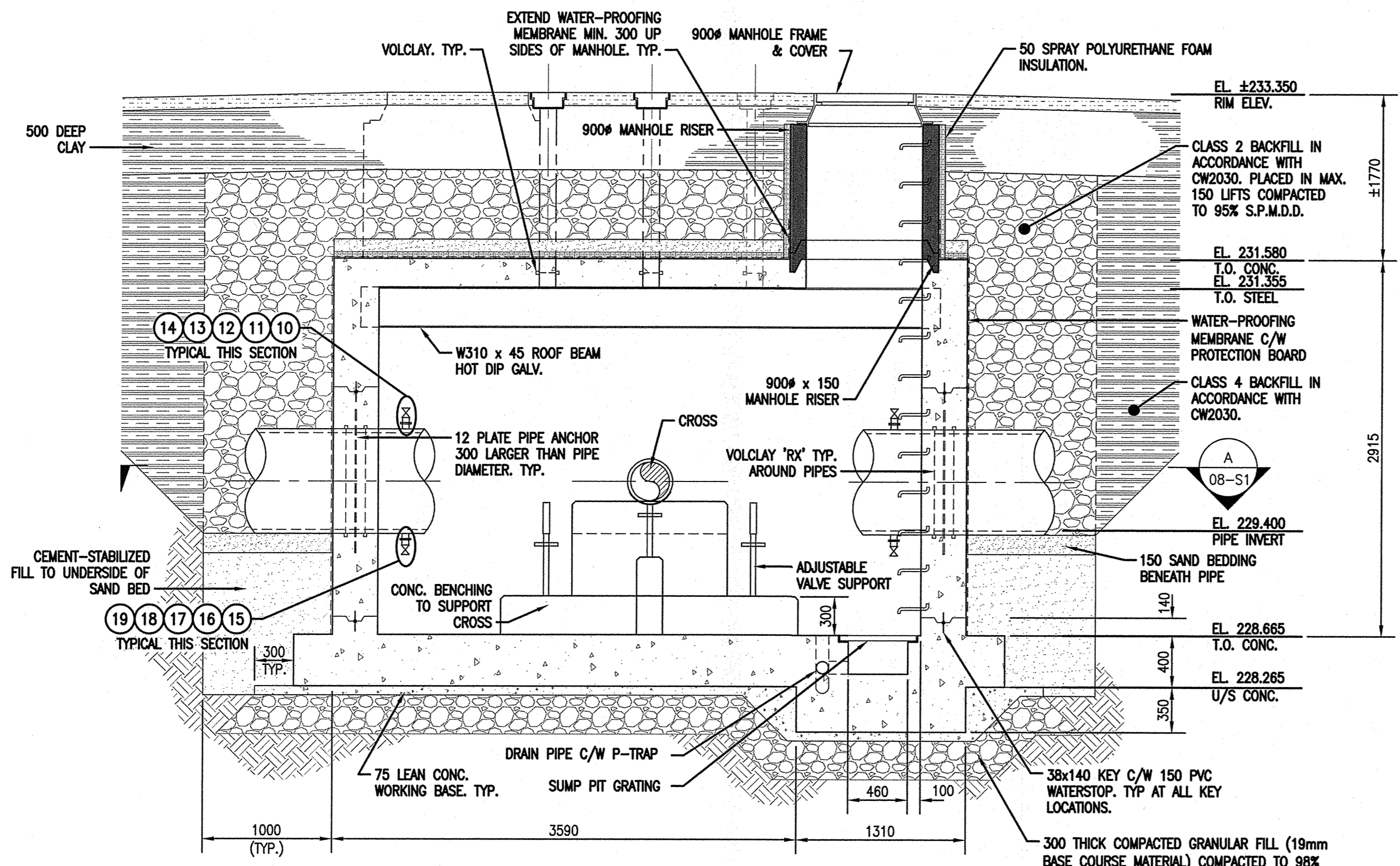


SECTION A
08-S1
1:30

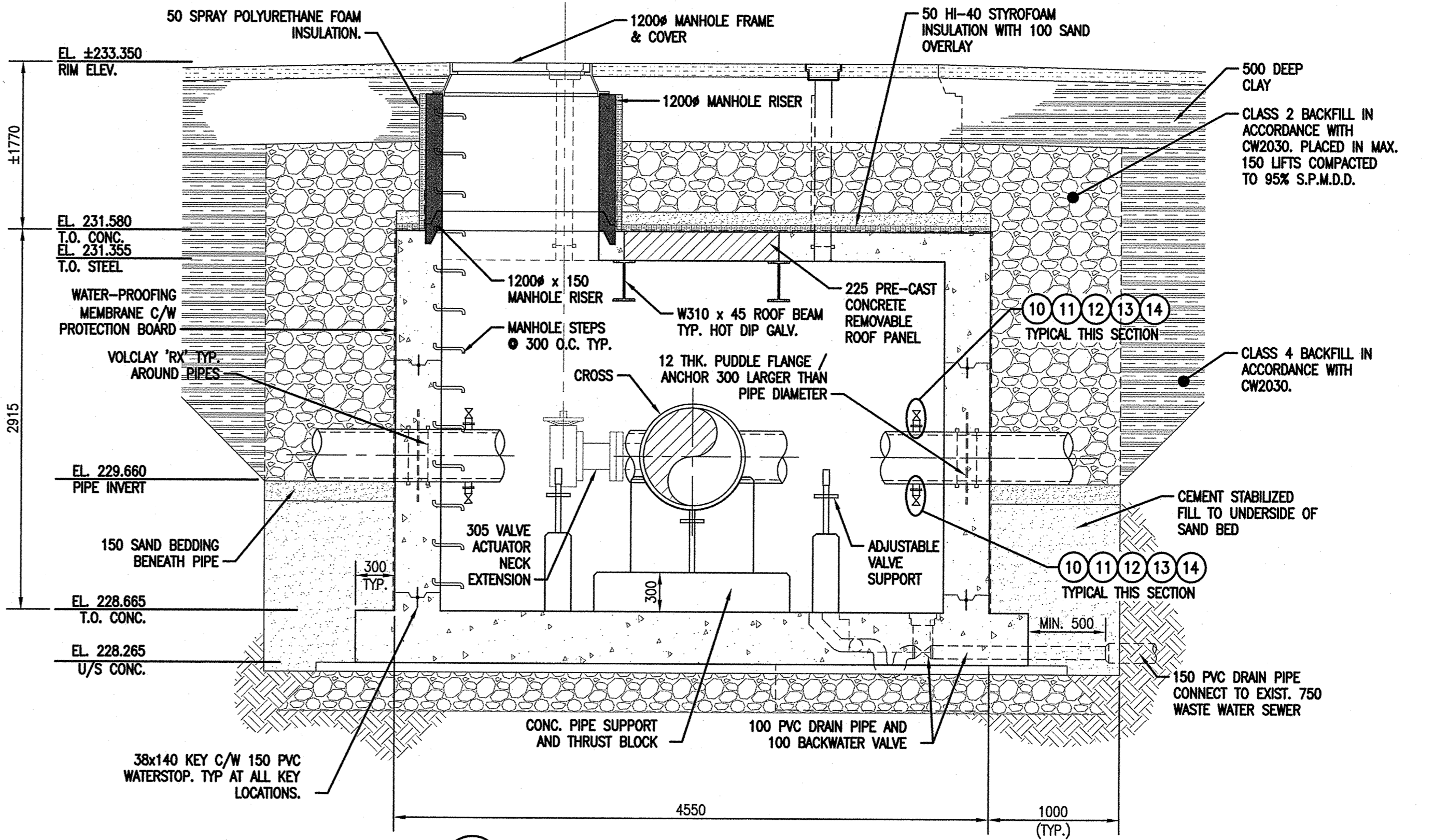
NOTE:
SLOPE RAFT SLAB 0.5% TO 1%
TO DRAIN TO SUMP PIT.

MATERIAL LIST			
ITEM	DESCRIPTION	QUANTITY	SIZE
1.	750 x 750 x 400 x 400 CROSS (FLANGED)	1	1300
2.	750mm AWWA C504 BUTTERFLY VALVE (FL x FL) c/w MANUAL ACTUATOR & 305 ACTUATOR NECK EXTENSION *	1	305
3.	400mm AWWA C509 GATE VALVE (FL x FL)	2	410
4.	750 SPOOL PIECE (FL x VIC-44)	2	TO SUIT
5.	400 SPOOL PIECE (FL x VIC-44)	2	TO SUIT
6.	750 WALL PIECE (VIC-44 x MAINLINE PIPE CONNECTION) c/w THRUST FLANGE AND 50 NPT OUTLET TOP AND 75 NPT OUTLET BOTTOM	2	TO SUIT
7.	400 WALL PIECE (VIC-44 x PE) c/w THRUST FLANGE AND 50 NPT OUTLET (TOP AND BOTTOM)	2	TO SUIT
8.	750 VICTAULIC STYLE 44 COUPLING	2	
9.	400 VICTAULIC STYLE 44 COUPLING	2	
10.	50 SCHEDULE 80 STEEL NIPPLE (THREADED)	6	
11.	50 STEEL FLANGE CLASS 125 (THREADED) c/w ISOLATION KIT	6	
12.	50 CAST BRONZE OR BRASS FLANGE (THREADED)	6	
13.	50 CAST BRONZE OR BRASS NIPPLE (THREADED)	6	
14.	50 BRONZE GATE VALVE (THREADED)	6	
15.	75 SCHEDULE 80 STEEL NIPPLE (THREADED)	2	
16.	75 STEEL FLANGE CL 125 (THREADED) c/w ISOLATION KIT	2	
17.	75 CAST BRONZE OR BRASS FLANGE (THREADED)	2	
18.	75 CAST BRONZE OR BRASS NIPPLE (THREADED)	2	
19.	75 BRONZE GATE VALVE (THREADED)	2	
20.	750 SPOOL PIECE (FLxFL)	1	305

* ITEMS SUPPLIED BY CITY.
NOTES:
1. CHAMBER FITTINGS TO BE AWWA C110 DUCTILE IRON OR STEEL.
2. CHAMBER PIPING TO BE AWWA C151 CLASS 54 D1, AWWA C200 STEEL OR AWWA C301 PCCP



SECTION B
08-S1
1:30



SECTION C
08-S1
1:30

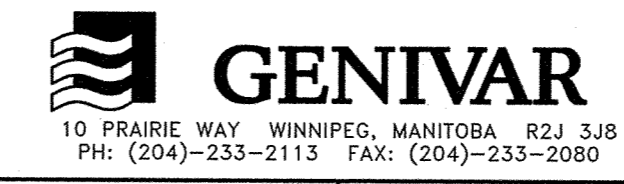
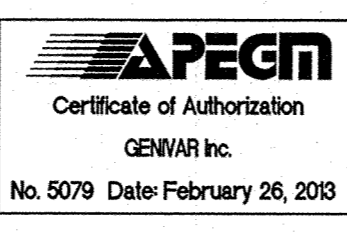
300 THICK COMPACTED GRANULAR FILL (19mm BASE COURSE MATERIAL) COMPACTED TO 98% STD. PROCTOR DENSITY ON TOP OF COMPACTED SUBGRADE. PREPARE SUBGRADE AS PER GEOTECH. REPORT. TYP.

38x140 KEY C/W 150 PVC WATERSTOP. TYP AT ALL KEY LOCATIONS.

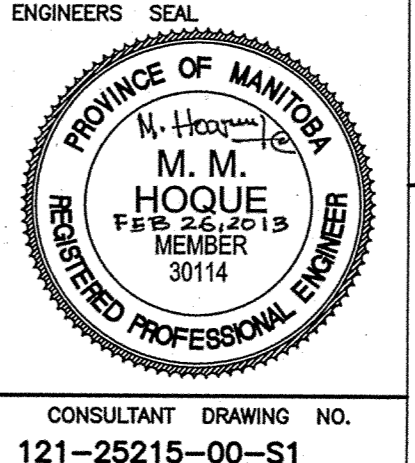
LOCATION APPROVED
UNDERGROUND STRUCTURES

SUPV. U/G STRUCTURES DATE COMMITTEE

NOTE:
LOCATION OF UNDERGROUND STRUCTURES AS SHOWN ARE BASED ON THE BEST INFORMATION AVAILABLE BUT NO GUARANTEE IS GIVEN THAT ALL EXISTING UTILITIES ARE SHOWN OR THAT THE GIVEN LOCATIONS ARE EXACT. CONFIRMATION OF EXISTENCE AND EXACT LOCATION OF ALL SERVICES MUST BE OBTAINED FROM THE INDIVIDUAL UTILITIES BEFORE PROCEEDING WITH CONSTRUCTION.



DESIGNED BY	MMH	CHECKED BY	BM
DRAWN BY	ADK	APPROVED BY	BE
HOR. SCALE:	-	RELEASED FOR CONSTRUCTION	
VERT. SCALE:	-	DATE	2013/02/01
DATE	2013/02/01	DATE	2012/02/27



ENGINEERS SEAL

THE CITY OF WINNIPEG
WATER AND WASTE DEPARTMENT

2013 FEEDERMAIN INSTALLATION AND ASSOCIATED WORKS
KENASTON BOULEVARD
OFFTAKE VALVE CHAMBER
CONCRETE DETAILS 1 OF 2

SHEET 8 OF 10
CITY DRAWING NO. D-13154

CONSULTANT DRAWING NO. 121-25215-00-S1
BID OPPORTUNITY: 181-2013