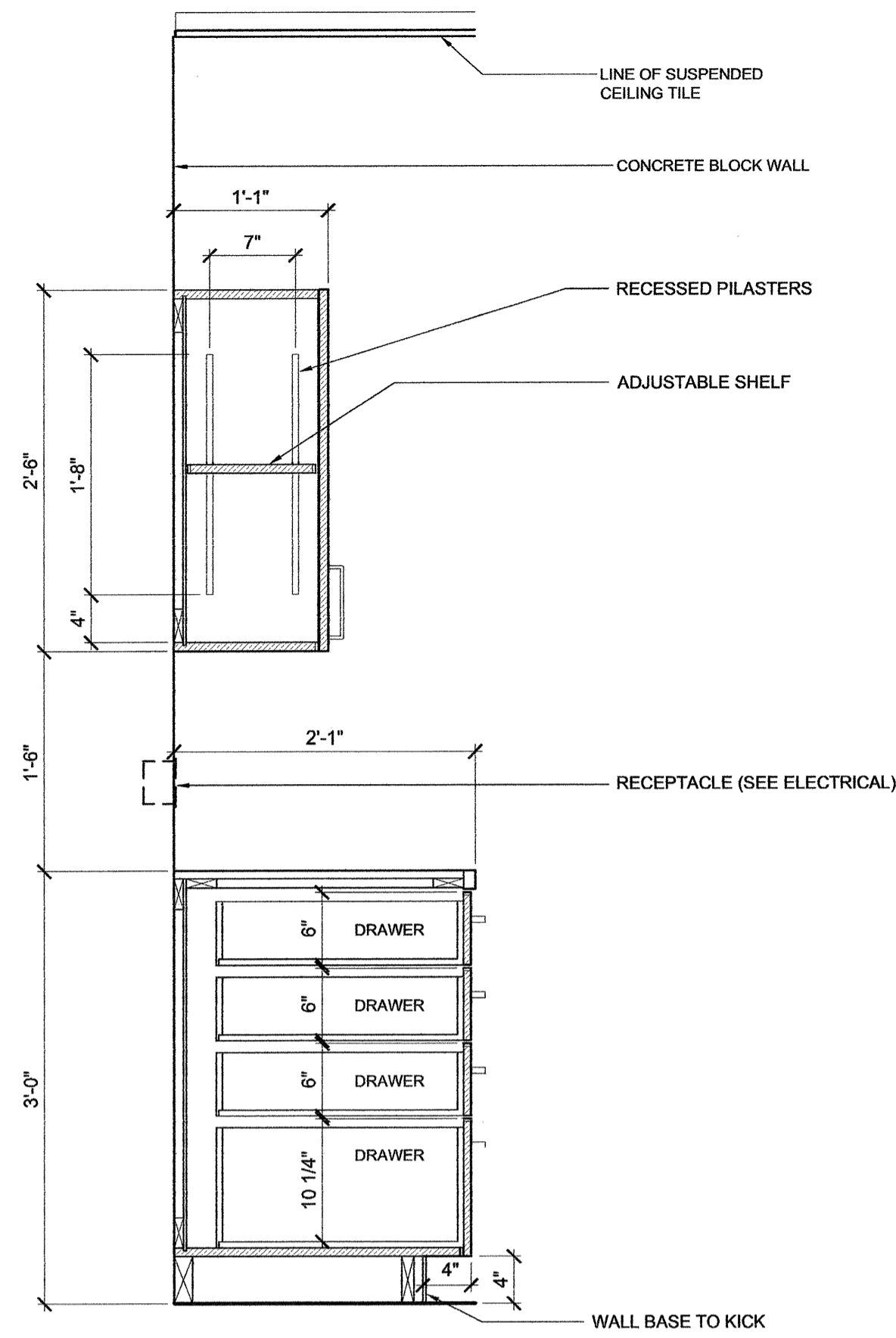
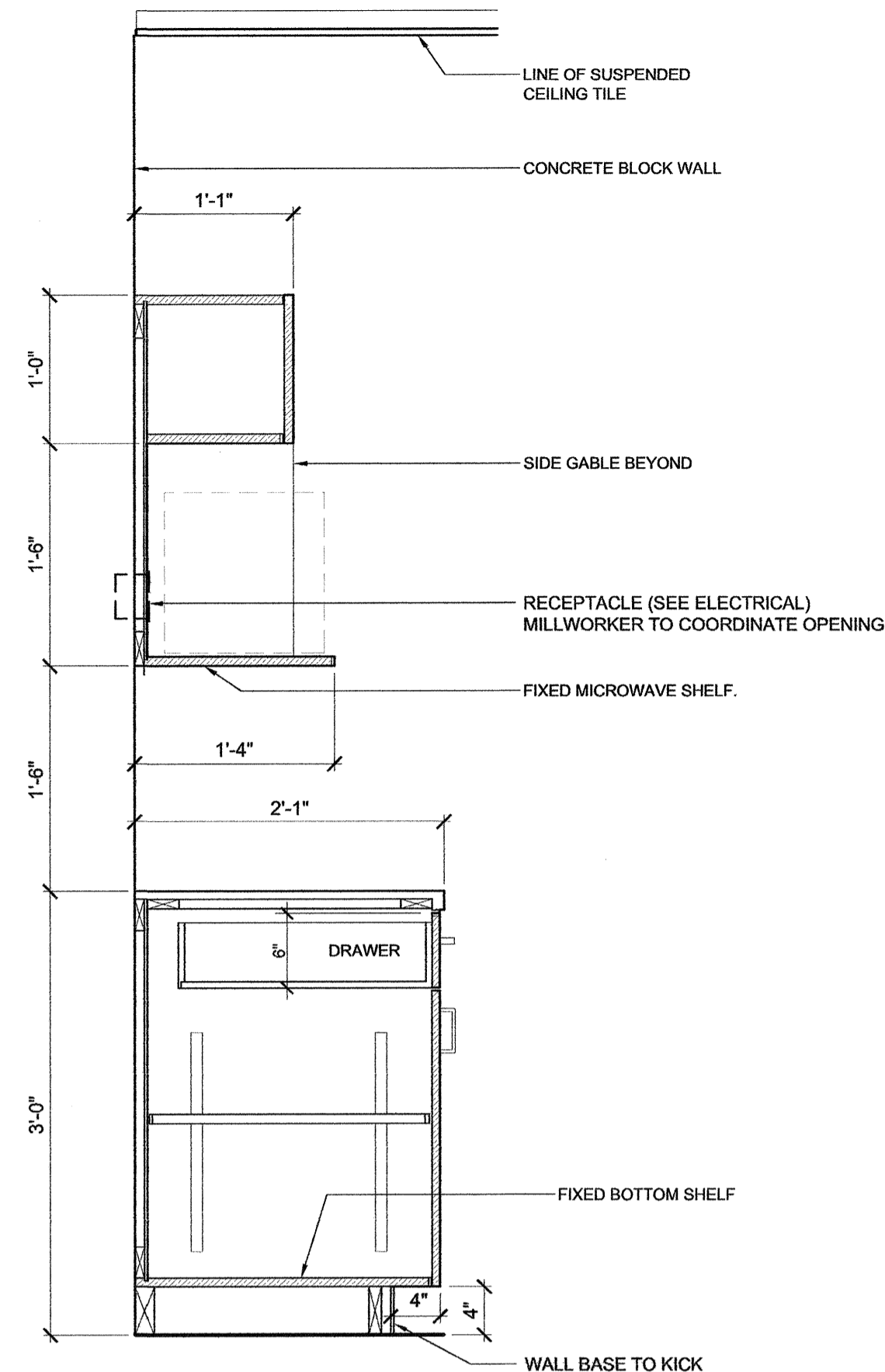


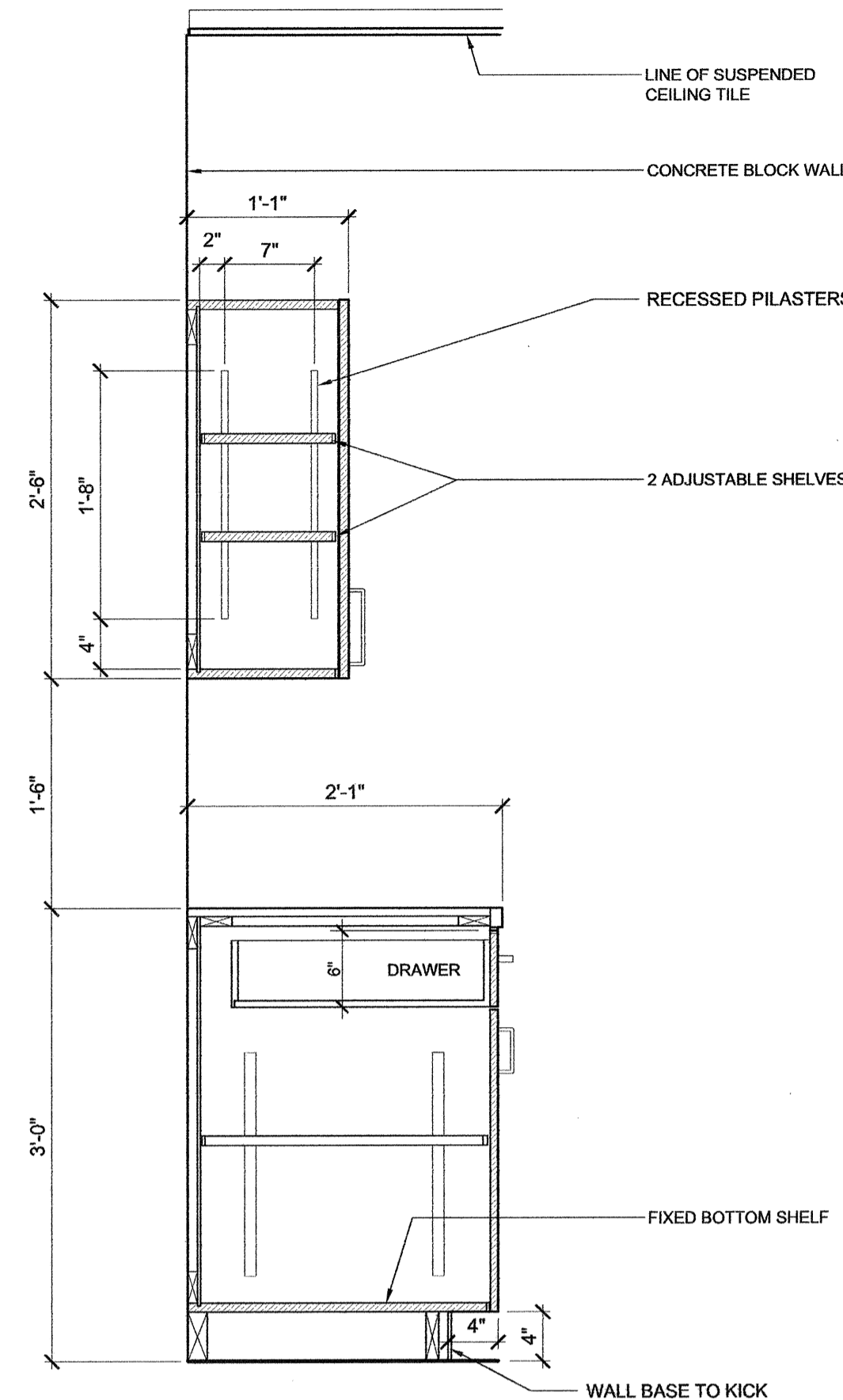
This drawing shall not be scaled. Follow given dimensions only.



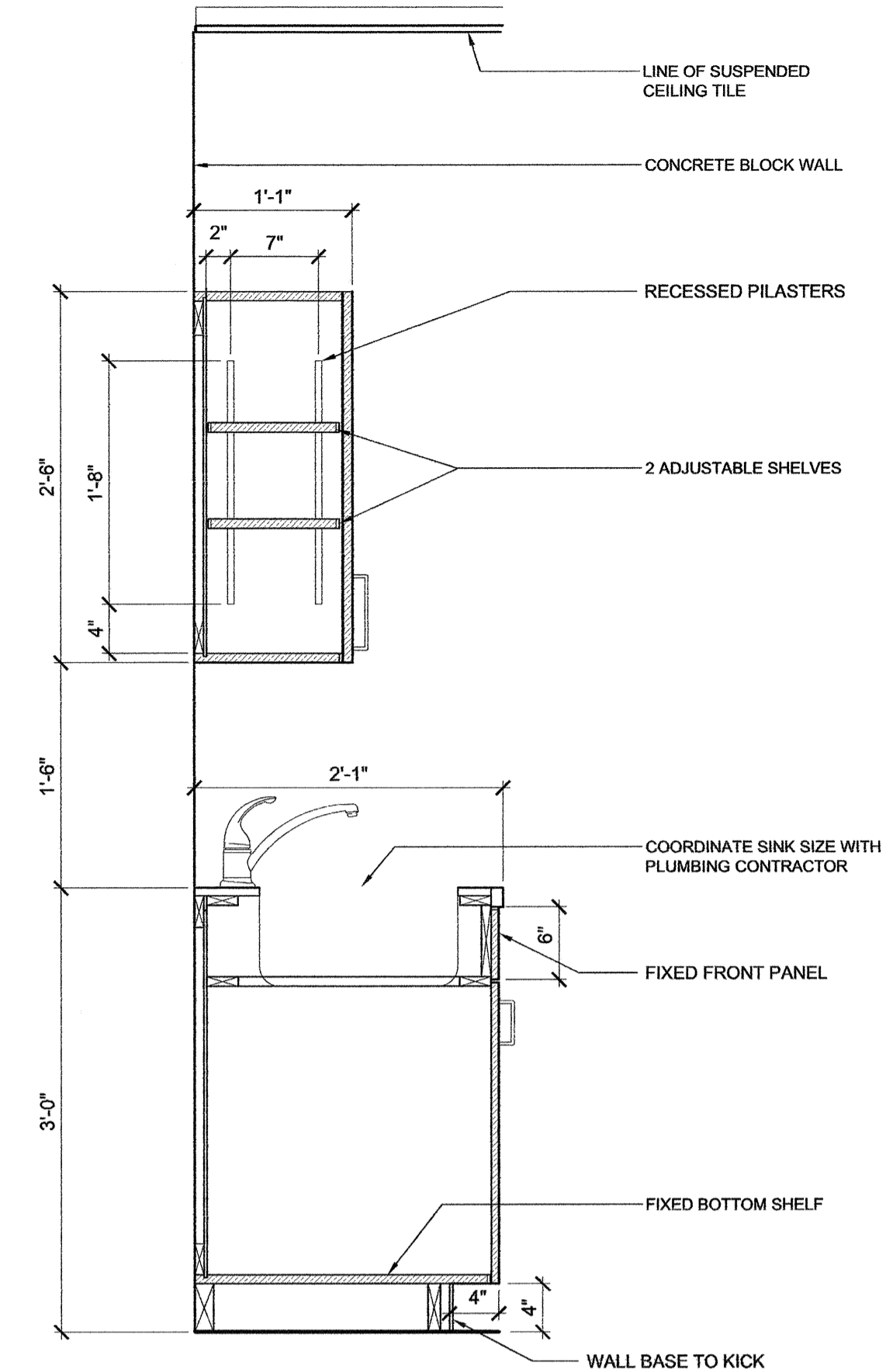
1 KITCHEN MILLWORK
 A-503 Scale 1" = 1'-0"



2 KITCHEN MILLWORK
 A-503 Scale 1" = 1'-0"

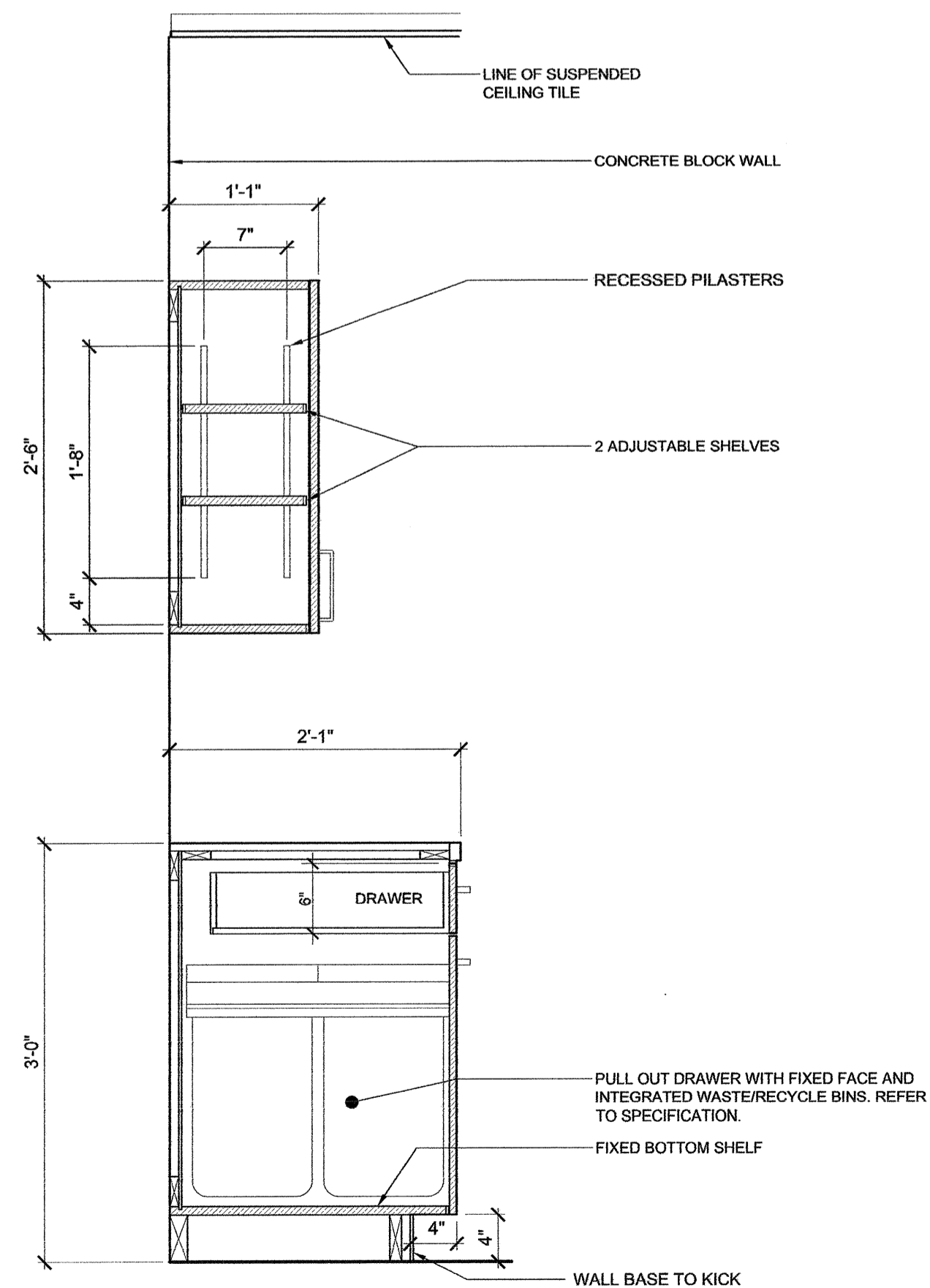


3 KITCHEN MILLWORK
 A-503 Scale 1" = 1'-0"

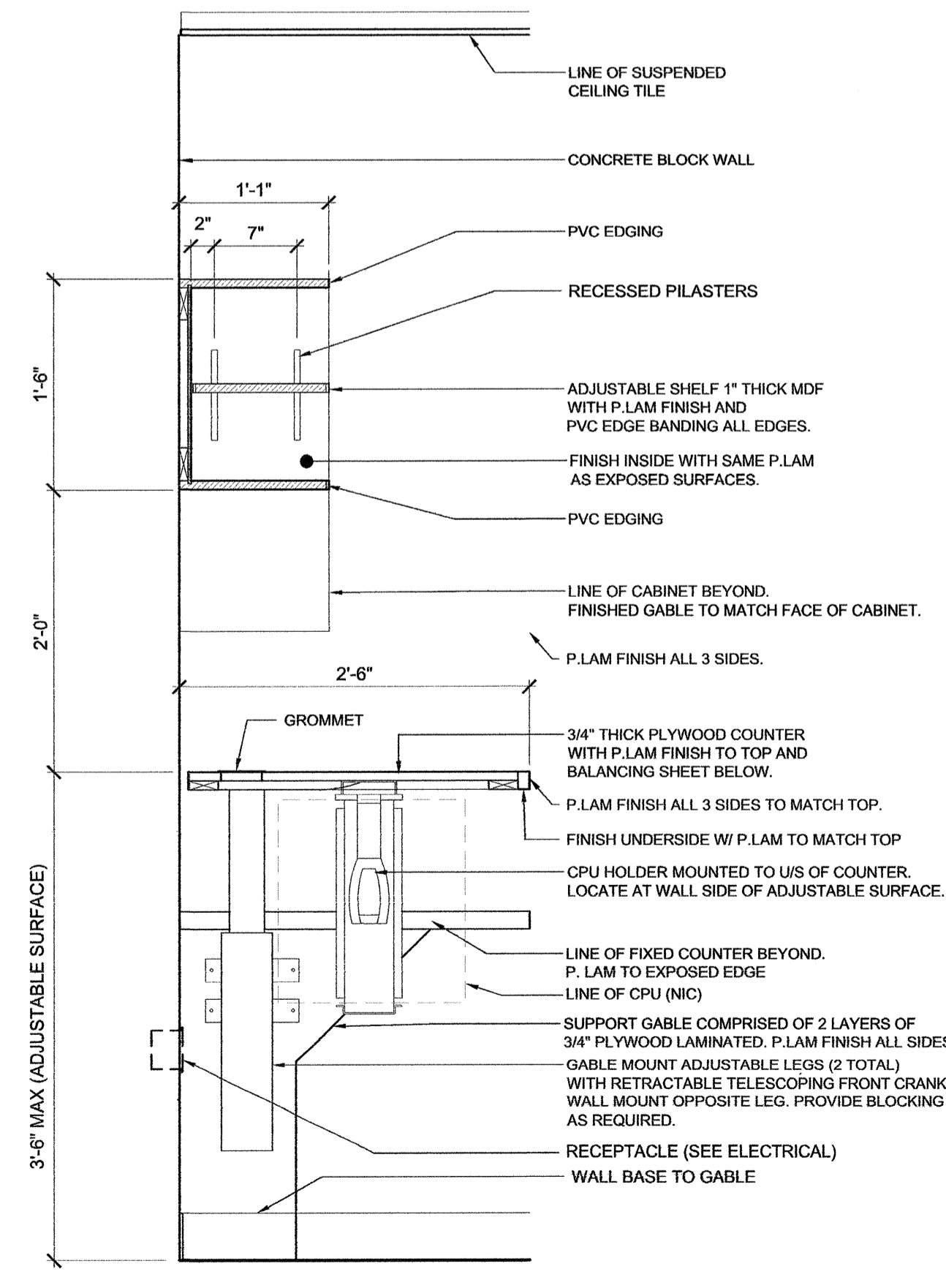


4 KITCHEN MILLWORK
 A-503 Scale 1" = 1'-0"

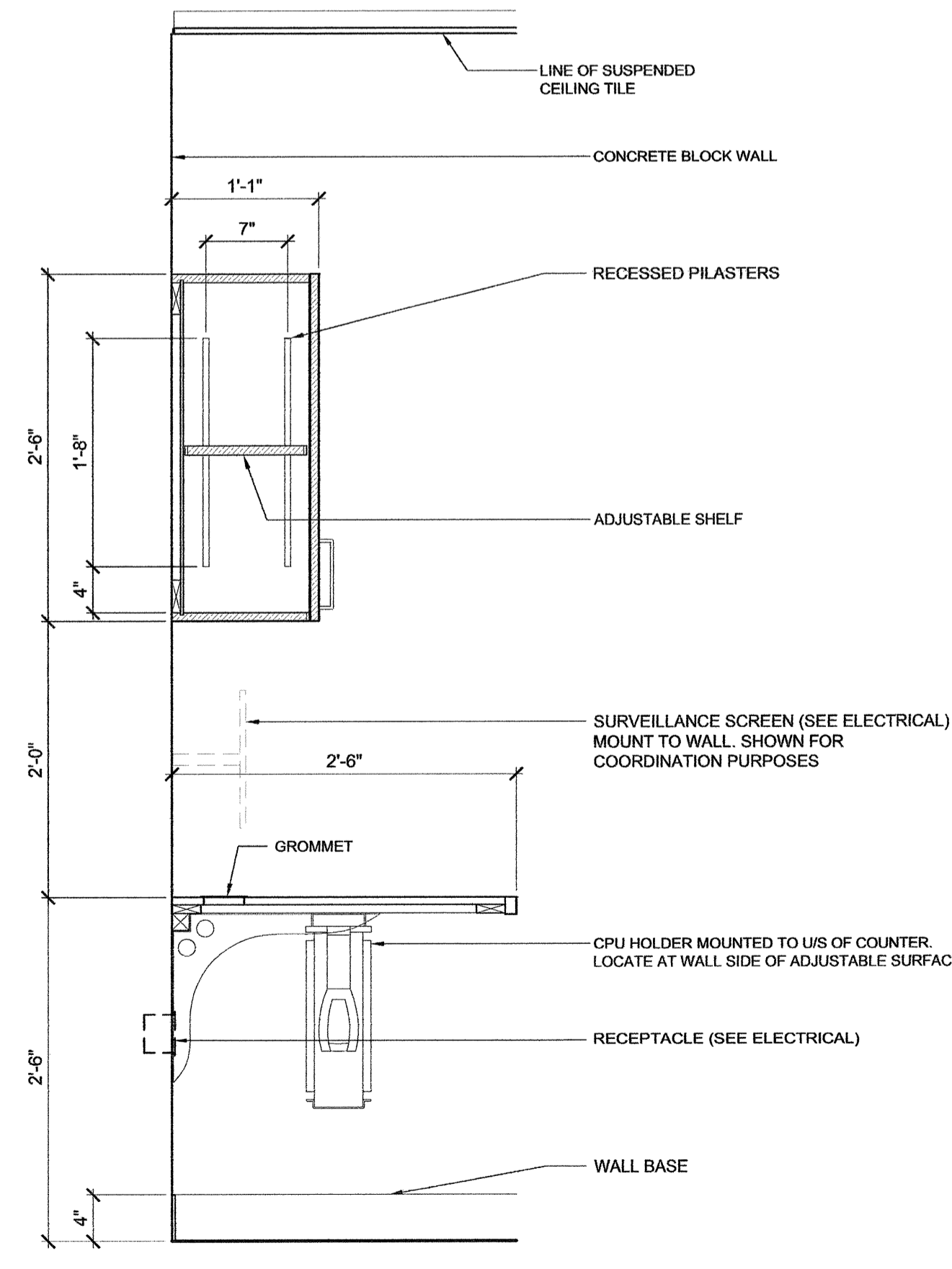
NOTE
 REFER TO SPECIFICATIONS FOR TYPICAL CONSTRUCTION. INTERIOR OF CABINETS TO BE WHITE UNLESS NOTED OTHERWISE.



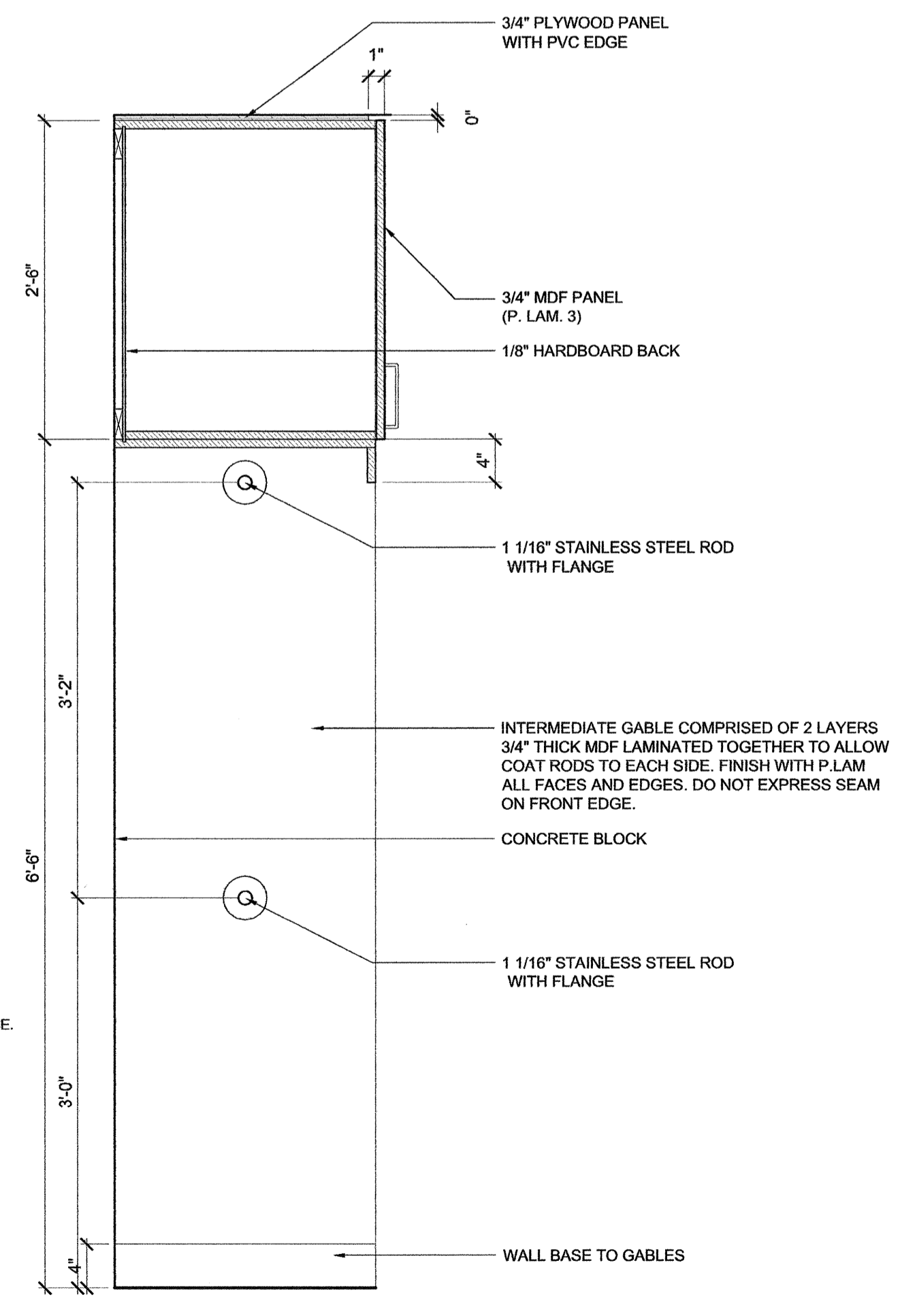
5 PULL OUT WASTE RECEPTACLE CABINET & UPPER
 A-503 Scale 1" = 1'-0"



6 OFFICE MILLWORK
 A-503 Scale 1" = 1'-0"



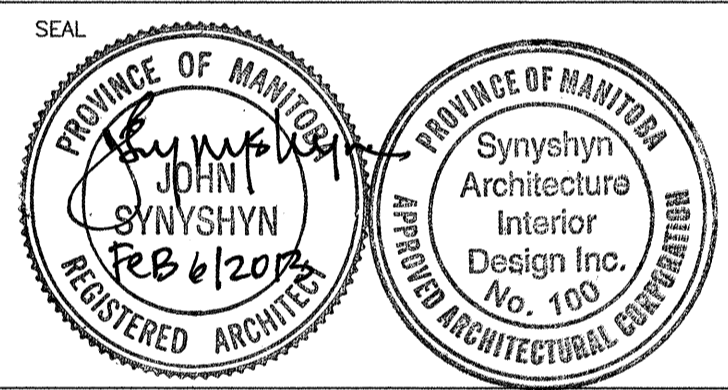
7 OFFICE MILLWORK
 A-503 Scale 1" = 1'-0"



8 COAT HOOK
 A-503 Scale 1" = 1'-0"

ISSUED FOR

0 TENDER



ARCHITECT / PRIME CONSULTANT
SYNYSHYN ARCHITECTURE + INTERIOR DESIGN INC.
 MANITOBA • ALBERTA
 T: 204.947.1100
 F: 204.956.5742
 603-43 Albert Street
 Winnipeg, Manitoba
 R3B 1G4 Canada
 info@synyshyn.com
 www.synyshyn.com

ENGINEERING CONSULTANT
KGS GROUP
 865 Waverley Street
 R3T 5P4
 T: 204.896.1209
 F: 204.896.0754
 Winnipeg, Manitoba
 Canada

ENGINEERING CONSULTANT
CROSIER KILGOUR & PARTNERS Ltd.
 300-275 Carlton Street
 R3C 5R6
 T: 204.943.7501
 F: 204.943.7507
 Winnipeg, Manitoba
 Canada

OWNER
CITY OF WINNIPEG
 Planning, Property and Development Department
 Municipal Accommodations Division
 300-65 Garry Street
 R3C 4K4
 Winnipeg, Manitoba
 Canada

PROJECT TITLE
MARGARET GRANT POOL INTERIOR RENOVATIONS
BID OPPORTUNITY NO.12-2013

685 DALHOUSIE DRIVE

DRAWING TITLE
MILLWORK DETAILS

DESIGNED BY JS DRAWN BY LB

ISSUE DATE 01.31.2013 REVISION No.

PROJECT No. 12904 DRAWING No. **A-503**