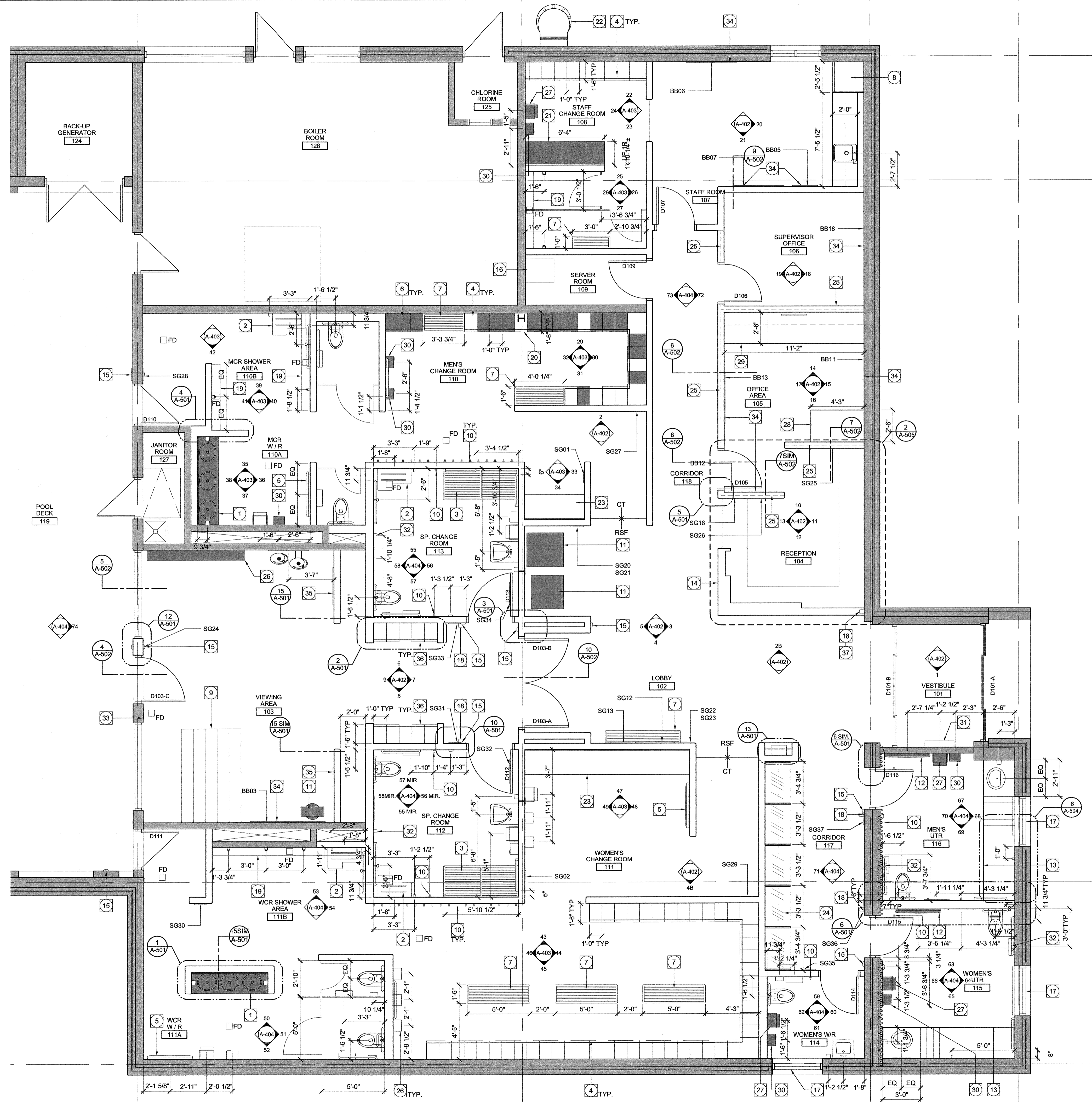


ENLARGED FLOOR PLAN RENOVATION NOTES:

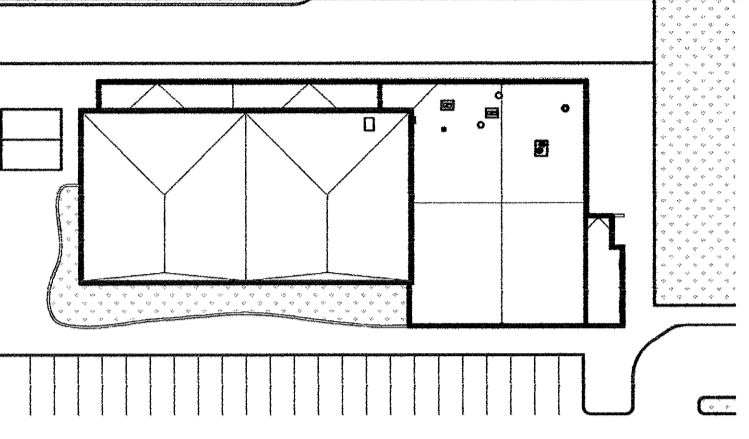
- 1 RELOCATED STAINLESS STEEL COUNTER, SINKS, AND ELECTRIC FAUCETS. CONTRACTOR TO VERIFY DIMENSIONS PRIOR TO CONSTRUCTION OF ADJACENT CONCRETE BLOCK WALL. COORDINATE ELECTRICAL FOR FAUCETS.
- 2 FOLD DOWN SHOWER BENCH.
- 3 FIXED 30"x 72" TRANSFER BENCH.
- 4 DOUBLE TIER COIN OPERATED LOCKERS ON A PLYWOOD BASE WITH STAINLESS STEEL FINISH.
- 5 BABY CHANGE STATION.
- 6 RELOCATED EXISTING STAINLESS STEEL COIN OPERATED LOCKERS ON BASE AS NOTED IN NOTE 4.
- 7 BENCH. REFER TO A-504 FOR DETAILS.
- 8 RELOCATED REFRIGERATOR(28Wx30Dx62 1/4"H). REVERSE HINGES.
- 9 RELOCATED BLEACHER.
- 10 RELOCATED EXISTING AND NEW COLLAPSIBLE COAT HOOKS.
- 11 RELOCATED VENDING MACHINE.
- 12 RELOCATED BABY CHANGE STATION.
- 13 COUNTER WITH INTEGRATED TRANSFER BENCH. REFER TO A-504 FOR PERFORMANCE DETAILS.
- 14 RECEPTION DESK. REFER TO A-505 FOR DETAILS.
- 15 AUTOMATIC DOOR OPENER - BOTH SIDES OF DOOR.
- 16 SERVER.
- 17 NEW ALUMINUM WINDOW WITH FROSTED GLAZING. REFER TO SPECIFICATION.
- 18 BLUE STROBE LIGHT
- 19 TRENCH FOR FLOOR DRAIN.
- 20 PROVIDE FAKE LOCKER WITH SLOPPED TOP IN FRONT OF STEEL COLUMN.
- 21 SALVAGED STAINLESS STEEL VANITY CUT DOWN TO LENGTH OF WALL. PLACE CUT EDGE AGAINST WALL. POLISH SMOOTH.
- 22 EXISTING ROOF ACCESS LADDER TO REMAIN.
- 23 NEW VANITY. REFER TO A-504 FOR DETAILS.
- 24 COAT RACK. REFER TO A-503 FOR DETAILS.
- 25 TRANSOM WINDOW ABOVE.
- 26 EXISTING ELECTRICAL PANEL CABINET TO RECEIVE PAINT FINISH.
- 27 RELOCATED EXISTING PAPER TOWEL DISPENSER.
- 28 MILLWORK COUNTERTOP C/W LOWERS. REFER TO A-505 FOR DETAILS.
- 29 WORK STATION C/W UPPIERS AND LOWERS. REFER TO A-504 FOR DETAILS.
- 30 RELOCATED HAND DRYER.
- 31 EXISTING HEATER TO RECEIVE PAINT FINISH
- 32 DISTRESS ALARM
- 33 EXISTING COMMEMORATIVE PLATE TO BE REINSTALLED
- 34 EXISTING BULLETIN BOARD TO BE REINSTALLED
- 35 PAMPHLETS HOLDER
- 36 DOUBLE TIER COIN OPERATED LOCKERS ON BASE AS NOTED IN NOTE 4.
- 37 SOUND ALARM



1 ENLARGED FLOOR PLAN
A-401 Scale 1/4" = 1'-0"

Ownership of Documents:
Drawings and specifications as instruments of service are and shall remain the property of the Architect whether the project for which they are made is executed or not. They are not to be used by the owner on other projects or extensions to this project except by agreement in writing and with appropriate compensation to the Architect.

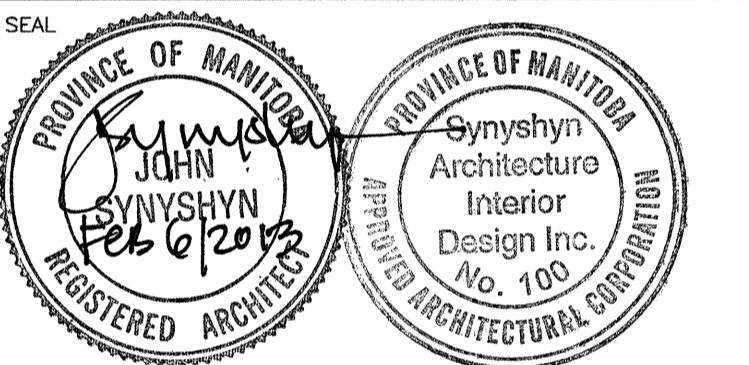
This drawing shall not be scaled. Follow given dimensions only.



KEY PLAN

ISSUED FOR

0 TENDER



ARCHITECT / PRIME CONSULTANT
SYNYSHYN
ARCHITECTURE + INTERIOR DESIGN INC.
MANITOBA • ALBERTA
T: 204.947-1100
F: 204.956-5742
603-63 Albert Street info@synyshyn.com
Winnipeg, Manitoba
R3B 1G4 Canada www.synyshyn.com

ENGINEERING CONSULTANT
KGS GROUP
865 Waverley Street Winnipeg, Manitoba
R3T 5H4 Canada
T: 204.886.1209
F: 204.886.0754

ENGINEERING CONSULTANT
CROSIER KILGOUR & PARTNERS Ltd.
300-275 Carlton Street Winnipeg, Manitoba
R3C 8R6 Canada
T: 204.943.7501
F: 204.943.7507

OWNER
CITY OF WINNIPEG
Planning, Property and Development Department
Municipal Accommodations Division
300-65 Garry Street Winnipeg, Manitoba
R3C 4K4

PROJECT TITLE
**MARGARET GRANT POOL
INTERIOR RENOVATIONS
BID OPPORTUNITY
NO.12-2013**

685 DALHOUSIE DRIVE
DRAWING TITLE

ENLARGED FLOOR PLANS

DESIGNED BY JS DRAWN BY LB

ISSUE DATE 02.06.2013 REVISION No.

PROJECT No. 12904 DRAWING No. **A-401**