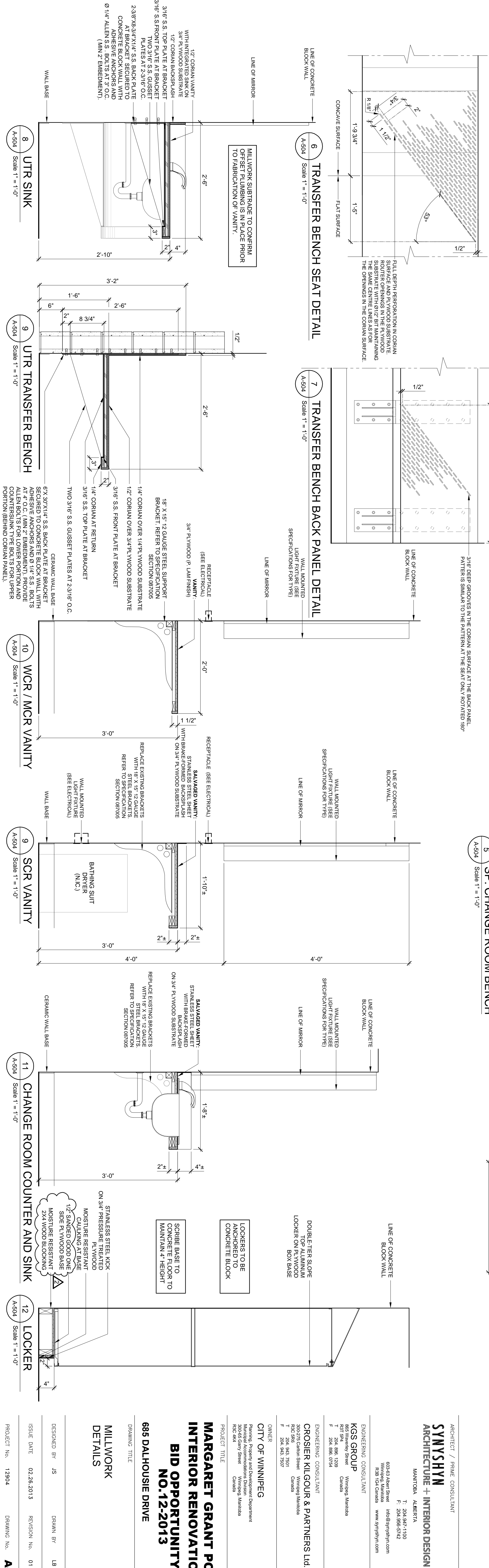
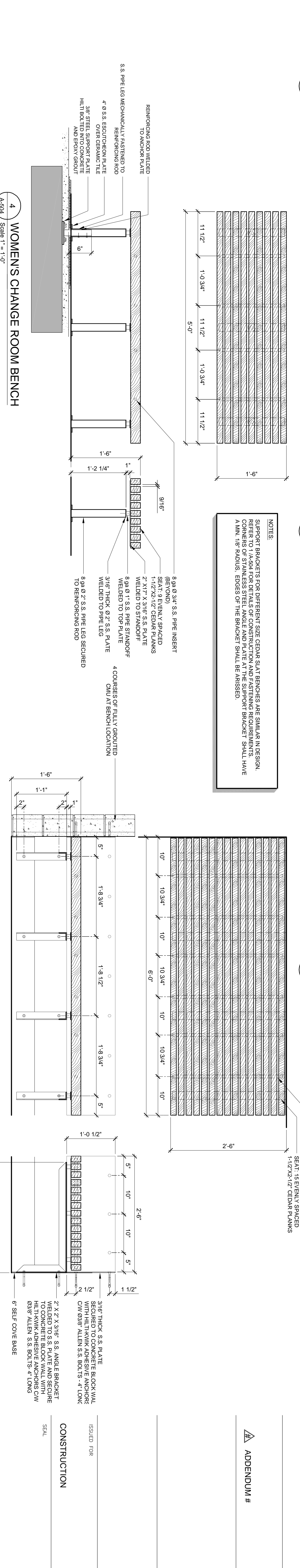


**NOTES:**  
SUPPORT BRACKETS FOR DIFFERENT SIZE CEDAR SLAT BRACKETS ARE SIMILAR IN DESIGN. REFER TO 1/4-5/8\"/>



**ADDENDUM #**

ISSUED FOR  
CONSTRUCTION  
SEAL

ARCHITECT / PRIME CONSULTANT  
**SYMSHYN ARCHITECTURE + INTERIOR DESIGN INC.**  
MANTOBA ALBERTA  
T: 204.947.1100  
403-43 Albert Street  
Winnipeg, Manitoba  
R2G 2A9, Canada  
www.symsbyn.com

ENGINEERING CONSULTANT  
**KGS GROUP**  
Winnipeg, Manitoba  
T: 204.886.7208  
863 Kennedy Street  
Winnipeg, Manitoba  
R2G 2A9, Canada  
www.kgsinc.com

ENGINEERING CONSULTANT  
**CROSIER KILGOU & PARTNERS Ltd.**  
Winnipeg, Manitoba  
R2G 2A9, Canada  
F: 204.943.7277  
300-275 Carlton Street  
Winnipeg, Manitoba  
R2G 2A9, Canada

OWNER  
**CITY OF WINNIPEG**  
Planning, Regrowth and Development Department  
300-655 Garry Street  
Winnipeg, Manitoba  
R2G 4K4

**MARGARET GRANT POOL INTERIOR RENOVATIONS BID OPPORTUNITY NO.12-2013**

688 DALHOUSIE DRIVE

DRAWING TITLE  
**MILLWORK DETAILS**  
DESIGNED BY: JS  
DRAWN BY: LB  
ISSUE DATE: 02.26.2013  
REVISION No. 01  
PROJECT No. 12904  
DRAWING No. **A-504**