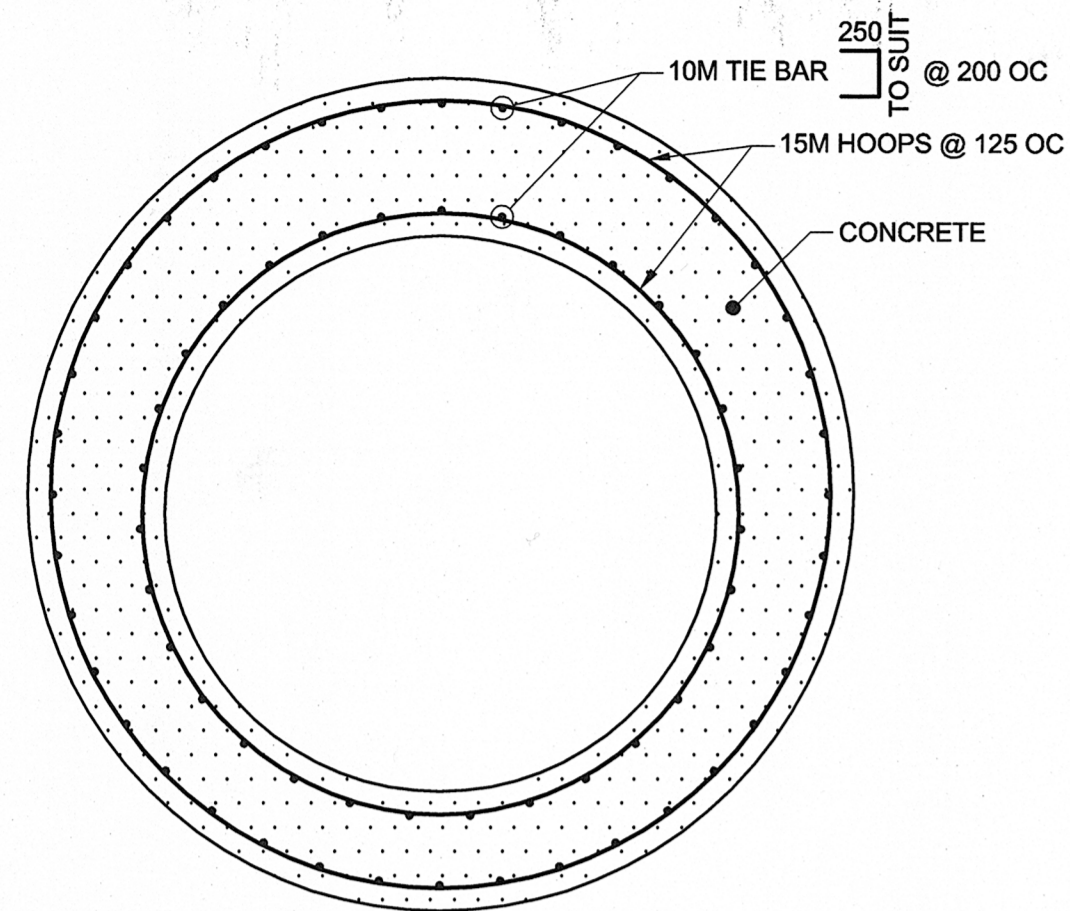
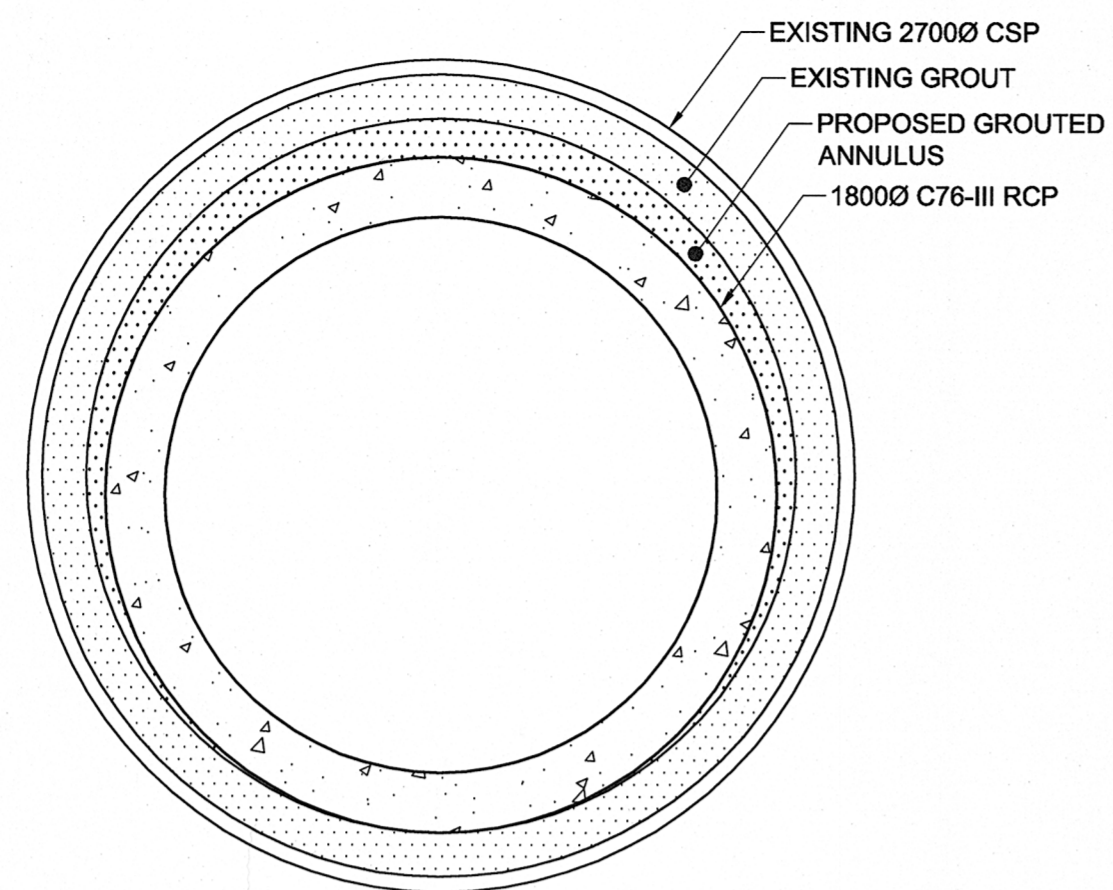


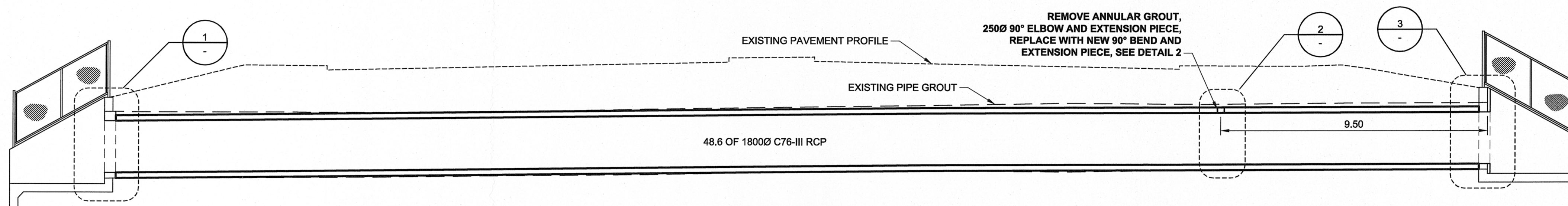
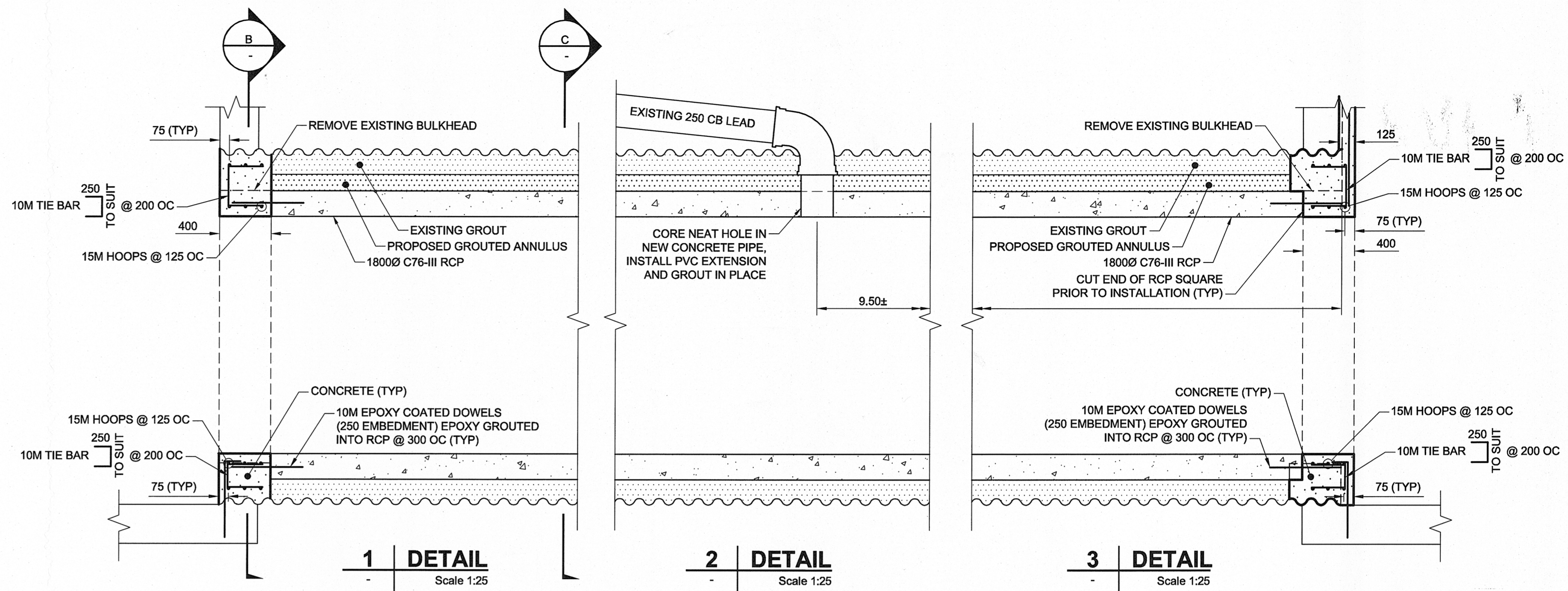
AL - BULKHEAD
2013-12-05
JACH-G-STANDARD CTB



B BULKHEAD CONNECTION
Scale 1:25



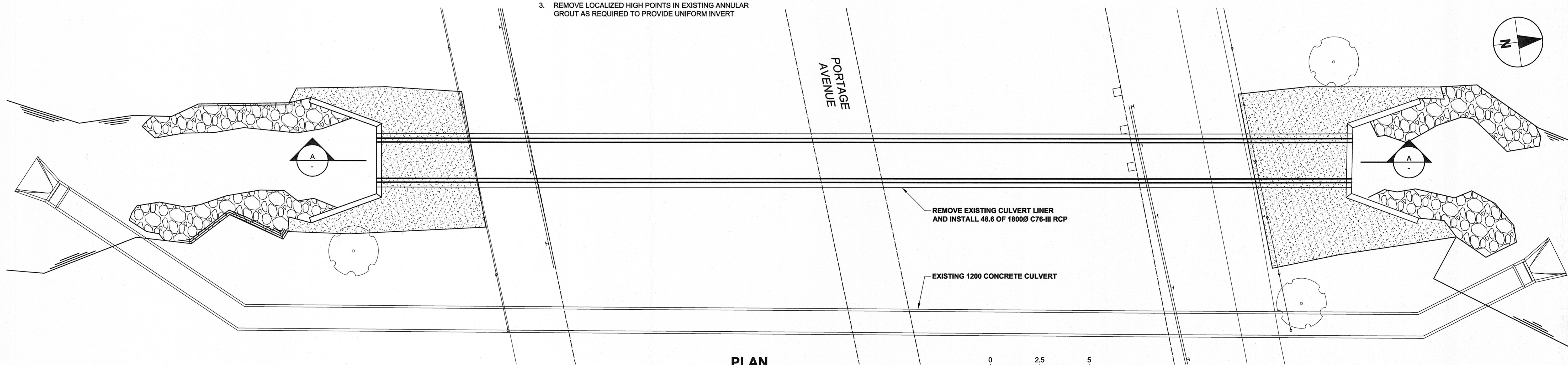
C TYPICAL PIPE CROSS SECTION
Scale 1:25



A SECTION
Scale 1:100

- NOTES:**
1. FINAL CULVERT PROFILE TO BE DETERMINED AFTER REMOVAL OF EXISTING HDPE LINER.
 2. INSTALL CONCRETE LEVELING COAT AS REQUIRED TO PROVIDE UNIFORM INVERT.
 3. REMOVE LOCALIZED HIGH POINTS IN EXISTING ANNULAR GROUT AS REQUIRED TO PROVIDE UNIFORM INVERT.

NOTE:
SEE DRAWINGS CS-002 AND CS-003 FOR HEADCELL PLAN AND DETAILS.



PLAN
Scale 1:100



LOCATION APPROVED UNDERGROUND STRUCTURES		B.M. ELEV.
SUPV. U/G STRUCTURES COMMITTEE	DATE	
NOTE: LOCATION OF UNDERGROUND STRUCTURES AS SHOWN ARE BASED ON THE BEST INFORMATION AVAILABLE. BUT NO GUARANTEE IS GIVEN THAT ALL EXISTING UTILITIES ARE SHOWN OR THAT THE GIVEN LOCATIONS ARE EXACT. CONFIRMATION OF EXISTENCE AND EXACT LOCATION OF ALL SERVICES MUST BE OBTAINED FROM THE INDIVIDUAL UTILITIES BEFORE PROCEEDING WITH CONSTRUCTION.		
NO.	ISSUED FOR TENDER	DATE
0	ISSUED FOR TENDER	2013/12/05
	REVISIONS	DATE BY

DESIGNED BY		CHECKED BY	
MG		SBB	
DRAWN BY		APPROVED BY	
KMB		SBB	
HOR. SCALE:		RELEASED FOR CONSTRUCTION BY:	
AS NOTED			
VERTICAL:		DATE	
AS NOTED		2013-11-29	

AECOM

DESIGNED BY: MG
CHECKED BY: SBB
DRAWN BY: KMB
APPROVED BY: SBB
HOR. SCALE: AS NOTED
VERTICAL: AS NOTED
RELEASED FOR CONSTRUCTION BY:
DATE: 2013-11-29

ENGINEER'S SEAL
PROVINCE OF MANITOBA
A.D. Dec 5/13
BRAUN
Member
24453
REGISTERED PROFESSIONAL ENGINEER
CONSULTANT DRAWING NO.
60311395-01-C-102

THE CITY OF WINNIPEG
PUBLIC WORKS DEPARTMENT

EMERGENCY WORKS AT PORTAGE AVENUE CULVERT (TRURO CREEK)

ALTERNATIVE 2 - PRECAST CONCRETE PIPE PLAN, SECTIONS AND DETAILS

CITY DRAWING NUMBER: C307-13-04
SHEET 4 OF 4
C-001

BID OPPORTUNITY NO. 1007-2013