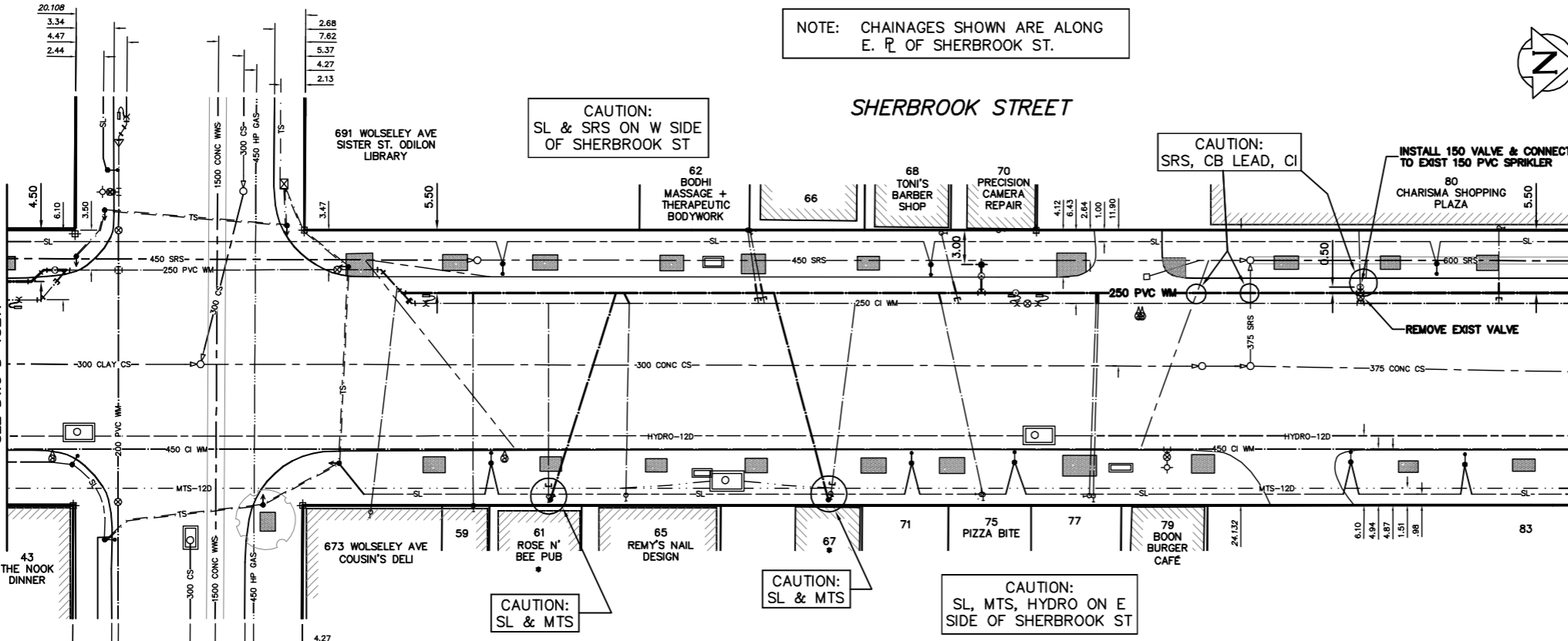
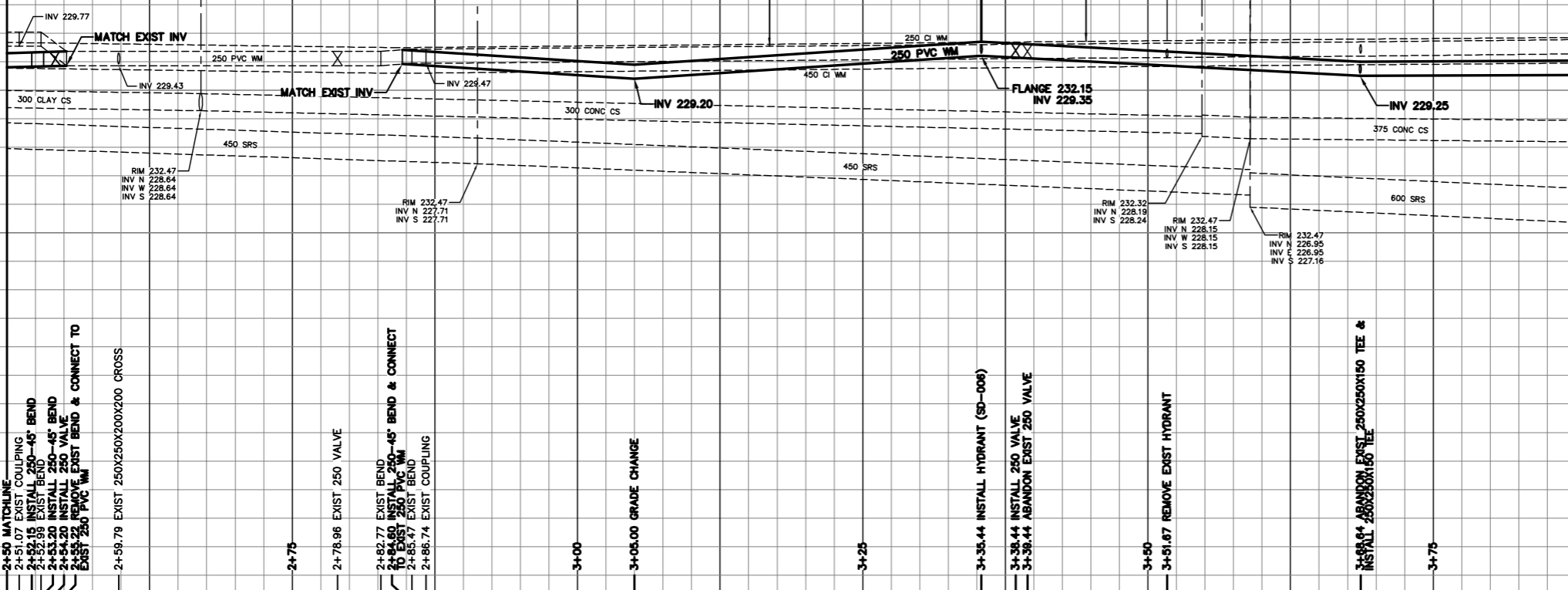


233.0
232.0
231.0
230.0
229.0
228.0
227.0
226.0
225.0

233.0
232.0
231.0
230.0
229.0
228.0
227.0
226.0
225.0



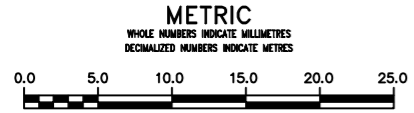
NOTE: CHAINAGES SHOWN ARE ALONG E. R. OF SHERBROOK ST.



WATER SERVICE INFORMATION					
ADDRESS	SIZE (mm)	SIZE (mm)	SHORT & LONG MEASUREMENT	CORP. LOCATION	REMARKS
43 SHERBROOK ST	25	25	10.95 EWL BLDG		SERV. OFF WOLSELEY
59 SHERBROOK ST	20	20	10.97 EEL SHERBROOK	0.2 W OF S/C	
61 SHERBROOK ST	20	20	14.96>NNL WOLSELEY		OPP S/C
62 SHERBROOK ST	20	20	21.53>NNL WOLSELEY		OPP S/C
65 SHERBROOK ST	20	20	2.27>NNL BLDG		RENEW TO E W/ 25 COPPER
66 SHERBROOK ST	20	20	28.38>NNL WOLSELEY	1.0 N OF S/C	
67 SHERBROOK ST	20	20	38.78>NNL WOLSELEY	0.3 N OF S/C	
68 SHERBROOK ST	20	20	0.75>NNL BLDG		RENEW TO E W/ 25 COPPER
69 SHERBROOK ST	20	20	39.10>NNL WOLSELEY	1.4 N OF S/C	
70 SHERBROOK ST	20	20	2.43>NNL HSE		RENEW TO E W/ 25 COPPER
71 SHERBROOK ST	20	20	46.25>NNL WOLSELEY	2.2 N OF S/C	
75 SHERBROOK ST	20	20	0.50>NNL BLDG		RENEW TO E W/ 25 COPPER
77 SHERBROOK ST	20	20	55.79>NNL WOLSELEY	1.6 N OF S/C	
79 SHERBROOK ST	20	20	2.80>NNL BLDG		
80 SHERBROOK ST	20	20	60.73>NNL WOLSELEY		
83 SHERBROOK ST	20	20	3.01>NNL HSE		RENEW TO E W/ 25 COPPER
88 SHERBROOK ST	20	20	59.33>NNL WOLSELEY	3.4 S OF S/C	WY'D W/ #75
89 SHERBROOK ST	20	20	2.75>NNL HSE		WY'D W/ #71
90 SHERBROOK ST	20	20	59.81>NNL WOLSELEY	3.5 S OF S/C	
91 SHERBROOK ST	20	20	4.74>NNL HSE		
92 SHERBROOK ST	20	20	68.91>NNL WOLSELEY	0.6 N OF S/C	
93 SHERBROOK ST	20	20	3.00>NNL HSE		
95 SHERBROOK ST	20	20	69.36>NNL WOLSELEY	0.4 N OF S/C	
96 SHERBROOK ST	20	20	13.42>NNL BLDG		
97 SHERBROOK ST	20	20	57.44>NNL WESTMINSTER		OPP VALVE
98 SHERBROOK ST	20	20	25.28>NNL BLDG		OPP S/C
99 SHERBROOK ST	20	20	45.29>NNL WESTMINSTER		OPP S/C
100 SHERBROOK ST	20	20	9.92>NNL BLDG		RENEW TO E W/ 25 COPPER
101 SHERBROOK ST	20	20	22.78>NNL WESTMINSTER	1.9 S OF S/C	
102 SHERBROOK ST	20	20	17.37>NNL BLDG		OPP S/C
103 SHERBROOK ST	20	20	32.94>NNL WESTMINSTER		OPP S/C
104 SHERBROOK ST	20	20	7.49>NNL BLDG		RENEW TO E W/ 25 COPPER
105 SHERBROOK ST	20	20	19.50>NNL SHERBROOK		RENEW TO E W/ 25 COPPER
106 SHERBROOK ST	20	20	5.97>NNL BLDG		OPP VALVE
107 SHERBROOK ST	20	20	34.16>NNL WESTMINSTER		OPP VALVE
108 SHERBROOK ST	20	20	4.91>NNL BLDG		OPP VALVE
109 SHERBROOK ST	20	20	3.00>NNL HSE		
110 SHERBROOK ST	20	20	3.75>NNL BLDG		RENEW TO E W/ 25 COPPER
111 SHERBROOK ST	20	20	17.28>NNL WESTMINSTER		OPP S/C
112 SHERBROOK ST	20	20	10.68>NNL BLDG		RENEW TO E W/ 25 COPPER
113 SHERBROOK ST	20	20	52.09>NNL WESTMINSTER		OPP S/C
114 SHERBROOK ST	20	20	10.13>NNL BLDG		RENEW TO E W/ 25 COPPER
115 SHERBROOK ST	20	20	37.44>NNL WESTMINSTER		RENEW TO E W/ 25 COPPER
116 SHERBROOK ST	20	20	3.07>NNL BLDG		RENEW TO E W/ 25 COPPER
117 SHERBROOK ST	20	20	52.13>NNL WESTMINSTER		RENEW TO E W/ 25 COPPER
118 SHERBROOK ST	20	20	2.82>NNL BLDG		RENEW TO E W/ 25 COPPER
119 SHERBROOK ST	20	20	67.43>NNL WESTMINSTER	1.4 S OF S/C	
120 SHERBROOK ST	20	20	3.45>NNL HSE		RENEW TO E W/ 25 COPPER
121 SHERBROOK ST	20	20	66.72>NNL WESTMINSTER		RENEW TO E W/ 25 COPPER
122 SHERBROOK ST	20	20	1.29>NNL BLDG		RENEW TO E W/ 25 COPPER
123 SHERBROOK ST	20	20	97.92>NNL WESTMINSTER	0.5 N OF S/C	
124 SHERBROOK ST	20	20	1.02>NNL HSE		RENEW TO E W/ 25 COPPER
125 SHERBROOK ST	20	20	83.70>NNL WESTMINSTER	1.2 S OF S/C	
126 SHERBROOK ST	20	20	3.82>NNL HSE		RENEW TO E W/ 25 COPPER
127 SHERBROOK ST	20	20	94.16>NNL WESTMINSTER	1.9 N OF S/C	
128 SHERBROOK ST	20	20	0.72>NNL BLDG		RENEW TO E W/ 25 COPPER
129 SHERBROOK ST	20	20	100.52>NNL WESTMINSTER	0.5 N OF S/C	
130 SHERBROOK ST	20	20	3.49>NNL HSE		RENEW TO E W/ 25 COPPER
131 SHERBROOK ST	20	20	108.21>NNL WESTMINSTER	0.1 S OF S/C	
132 SHERBROOK ST	20	20	0.53>NNL HSE		RENEW TO E W/ 20 COPPER
133 SHERBROOK ST	20	20	111.92>NNL WESTMINSTER	0.7 N OF S/C	
134 SHERBROOK ST	20	20	1.86>NNL BLDG		SERV. OFF SHERBROOK
135 SHERBROOK ST	20	20	5.93>NNL WOLSELEY	2.4 N OF S/C	
136 SHERBROOK ST	20	20	6.41>NNL BLDG		SERV. OFF WOLSELEY
137 SHERBROOK ST	20	20	16.08>NNL SHERBROOK	1.5 E OF S/C	
138 SHERBROOK ST	20	20	12.61>NNL BLDG		SERV. OFF WESTMINSTER
139 SHERBROOK ST	20	20	12.79>NNL SHERBROOK	0.3 W OF S/C	
140 SHERBROOK ST	20	20	14.22>NNL BLDG		SERV. OFF WESTMINSTER
141 SHERBROOK ST	20	20	14.41>NNL SHERBROOK	0.3 W OF S/C	

* SERVICES TO BE RENEWED TO E. ALL OTHERS TO BE RECONNECTED

WOLSELEY AVE



WARNING
IF POWER EQUIPMENT OR EXPLOSIVES ARE TO BE USED FOR EXCAVATION ON THIS PROJECT THE CONTRACTOR MUST:
1) NOTIFY THE GAS COMPANY OF THE PROPOSED LOCATION OF EXCAVATION.
2) TAKE PRECAUTION TO AVOID DAMAGE TO GAS COMPANY INSTALLATIONS.
SEE PROVINCIAL REGULATION 210/72 FOR DETAILS

LOCATION APPROVED UNDERGROUND STRUCTURES
SUPV. U/G STRUCTURES COMMITTEE DATE
NOTE: LOCATION OF UNDERGROUND STRUCTURES AS SHOWN ARE BASED ON THE BEST INFORMATION AVAILABLE BUT NO GUARANTEE IS GIVEN THAT ALL EXISTING UTILITIES ARE SHOWN OR THAT THE GIVEN LOCATIONS ARE EXACT. CONFIRMATION OF EXISTENCE AND EXACT LOCATION OF ALL UTILITIES MUST BE OBTAINED FROM THE INDIVIDUAL UTILITIES BEFORE PROCEEDING WITH CONSTRUCTION.

B.M. ELEV.	
CONSTRUCTION COMPLETION DATE: YYYY MM DD	
DESIGNED BY	SC
CHECKED BY	SC
DRAWN BY	CJH
APPROVED BY	KZ
SCALE:	
HORIZONTAL	1:250
VERTICAL	1:50
RELEASED FOR CONSTRUCTION	K.R. ZUREK
DATE	2013 05 06
DATE	13-05-06
NO.	REVISIONS
DATE	BY
DATE	2013 05 06
DATE	2013 05 06

ENGINEER'S SEAL
ORIGINAL SIGNED BY S.R.J. COURNOYER 13-05-06
CONSULTANT DRAWING NUMBER

THE CITY OF WINNIPEG
WATER AND WASTE DEPARTMENT
ENGINEERING DIVISION
2013 WATER RENEWALS
SHERBROOK STREET
125 N OF CORNISH AVENUE TO
112 N OF WOLSELEY AVENUE
SHEET 6 OF 9
CITY DRAWING NUMBER D-13218