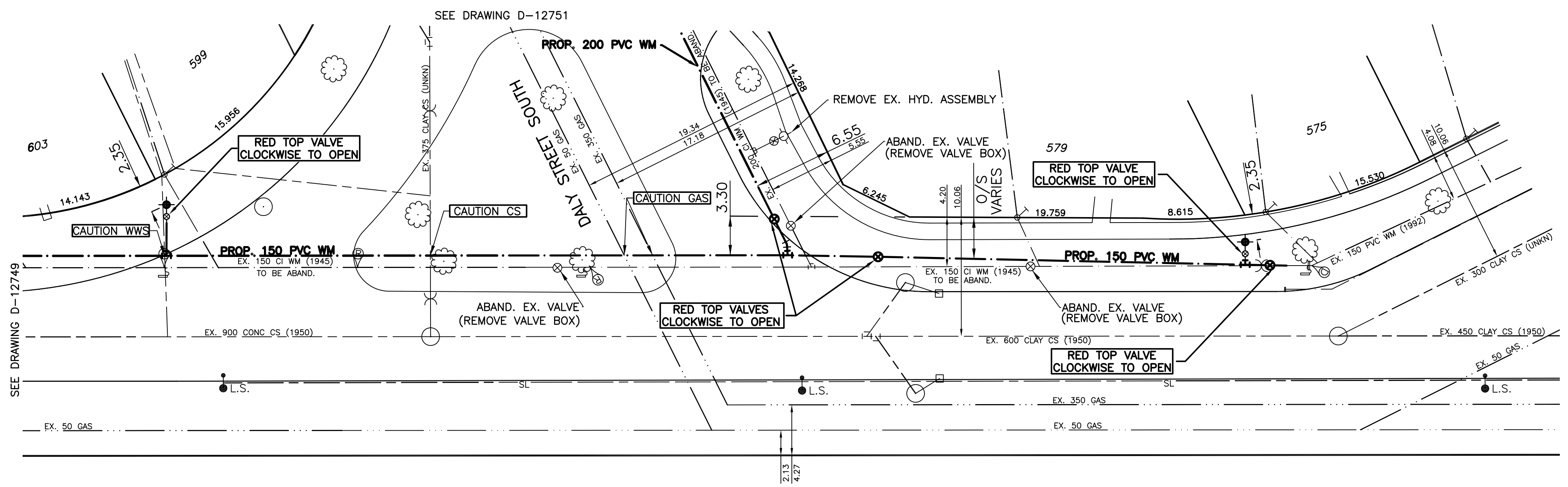
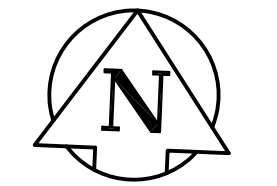


HOUSE WATER SERVICE INFORMATION				
ADDRESS & NATURE OF SERVICE	SIZE (mm) & TYPE	SHORT & LONG MEASUREMENT	CORP LOCATION	REMARKS
603 CHURCHILL DR	20 Copper	0.9 WWL HSE UNKNOWN	0.6 E S/C	
599 CHURCHILL DR	20 Copper	0.8 WWL HSE 30.5 E 1ST HYD W DALY	0.6 E S/C	
579 MONTAGUE AVE	20 Copper	2.0 EWL HSE 24.2 E HYD #2809	OPP S/C	
575 MONTAGUE AVE	20 Copper	W/HL 59.4 W OF HYDRANT	2.1 E OF SC	

CHAINAGE ALONG NORTH R OF
CHURCHILL DRIVE



- NOTES:**
1. ALL GATE VALVES ARE CLOCKWISE TO OPEN WITH A RED OPERATING NUT UNLESS NOTED OTHERWISE.
 2. WATERMAIN TO BE INSTALLED BY TRENCHLESS METHODS.
 3. BACKFILL IS CLASS 5 WITHIN BOULEVARD AND CLASS 3 WHEN WITHIN PAVEMENT/SIDEWALK OR WHEN WITHIN 1.0m OF PAVEMENT OR SIDEWALK.
 4. WATER SERVICES ARE 19mm UNLESS OTHERWISE NOTED.
 5. MINIMUM COVER TO TOP OF WATERMAIN SHALL BE 2.4m.
 6. LOCATION OF ALL SERVICES TO BE CONFIRMED IN THE FIELD.
 7. EXPOSE EXISTING WATERMAIN TO CONFIRM DEPTH PRIOR TO CONSTRUCTION.
 8. ALL LEAD SERVICES TO BE RENEWED TO PROPERTY LINE.
 9. SERVICES TO BE RENEWED SHALL BE REPLACED FROM WATERMAIN TO PROPERTY LINE. ALL OTHERS TO BE RECONNECTED.



"Description of property limits, and existing and/or proposed features relative to these limits as shown on this drawing do not represent a Legal Survey. GENIVAR makes no representation or guarantee that the property limit information is accurate. GENIVAR accepts no responsibility for damages, if any, suffered by any third party as a result of decisions made or actions based on this drawing."

METRIC
WHOLE NUMBERS INDICATE MILLIMETERS
DECIMALIZED NUMBERS INDICATE METERS

EXISTING	LEGEND - PLAN	PROPOSED	EXISTING	LEGEND - PLAN	PROPOSED	EXISTING	LEGEND - PROFILE	PROPOSED
	WATERMAIN			HYDRANT			VALVE	
	CURB STOP			WASTE WATER SEWER			LAND DRAINAGE SEWER	
	MANHOLE			C.B. LEAD			GAS	
	CATCH BASIN			HYDRO			M.T.S.	
	TEE			TRAFFIC SIGNAL			CONCRETE/ASPHALT	
	BEND			SIDEWALK			ANODE	
	HYDRANT			REDUCER			PLUG	
	CURB STOP			TREE			LAMP STANDARD	
	WASTE WATER SEWER			GAS			HYDRO	
	LAND DRAINAGE SEWER			M.T.S.			TRAFFIC SIGNAL	
	C.B. LEAD			CONCRETE/ASPHALT			SIDEWALK	
	MANHOLE			ANODE			WATERMAIN	
	CATCH BASIN			VALVE			LAND DRAINAGE SEWER	
	TEE			WASTE WATER SEWER			CENTERLINE	
	BEND			WATERMAIN			WATERMAIN	
	HYDRANT			VALVE			LAND DRAINAGE SEWER	
	CURB STOP			WASTE WATER SEWER			CENTERLINE	

LOCATION APPROVED
UNDERGROUND STRUCTURES

SUPV. U/G STRUCTURES DATE COMMITTEE

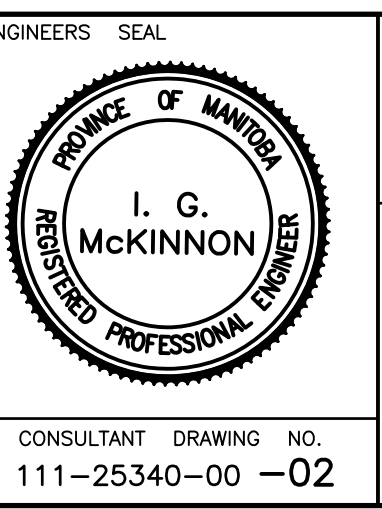
NOTE:
LOCATION OF UNDERGROUND STRUCTURES AS SHOWN ARE BASED ON THE BEST INFORMATION AVAILABLE BUT NO GUARANTEE IS GIVEN THAT ALL EXISTING UTILITIES ARE SHOWN OR THAT THE GIVEN LOCATIONS ARE EXACT. CONFIRMATION OF EXISTENCE AND EXACT LOCATION OF ALL SERVICES MUST BE OBTAINED FROM THE INDIVIDUAL UTILITIES BEFORE PROCEEDING WITH CONSTRUCTION.

NO.	REVISIONS	DATE	BY
3	BID OPPORTUNITY 90-2012	MAR/12	P.R.
2	REVISED DESIGN	MAR/12	P.R.
1	ISSUED FOR REVIEW	FEB/12	P.R.

GENIVAR
10 PRAIRIE WAY WINNIPEG, MANITOBA R2J 3J8
PH: (204)-233-2113 FAX: (204)-233-2080

DESIGNED BY: A.B. CHECKED BY: P.R.
DRAWN BY: A.B. APPROVED BY: I.McK.
HOR. SCALE: 1:250
VERT. SCALE: 1:50
DATE: MARCH 2012

RELEASED FOR CONSTRUCTION
ORIGINALLY SIGNED BY
S. COURNOYER P. ENG
DATE: MARCH 15, 2012



THE CITY OF WINNIPEG
WATER AND WASTE DEPARTMENT

Winnipeg

2012 CAPITAL WORKS
WATERMAIN RENEWALS
CHURCHILL DRIVE

60M WEST OF DALY STREET SOUTH TO
47M EAST OF DALY STREET SOUTH

SHEET 2 OF 5
CITY DRAWING NO.
D-12750

CONSULTANT DRAWING NO.
111-25340-00-02