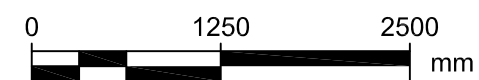
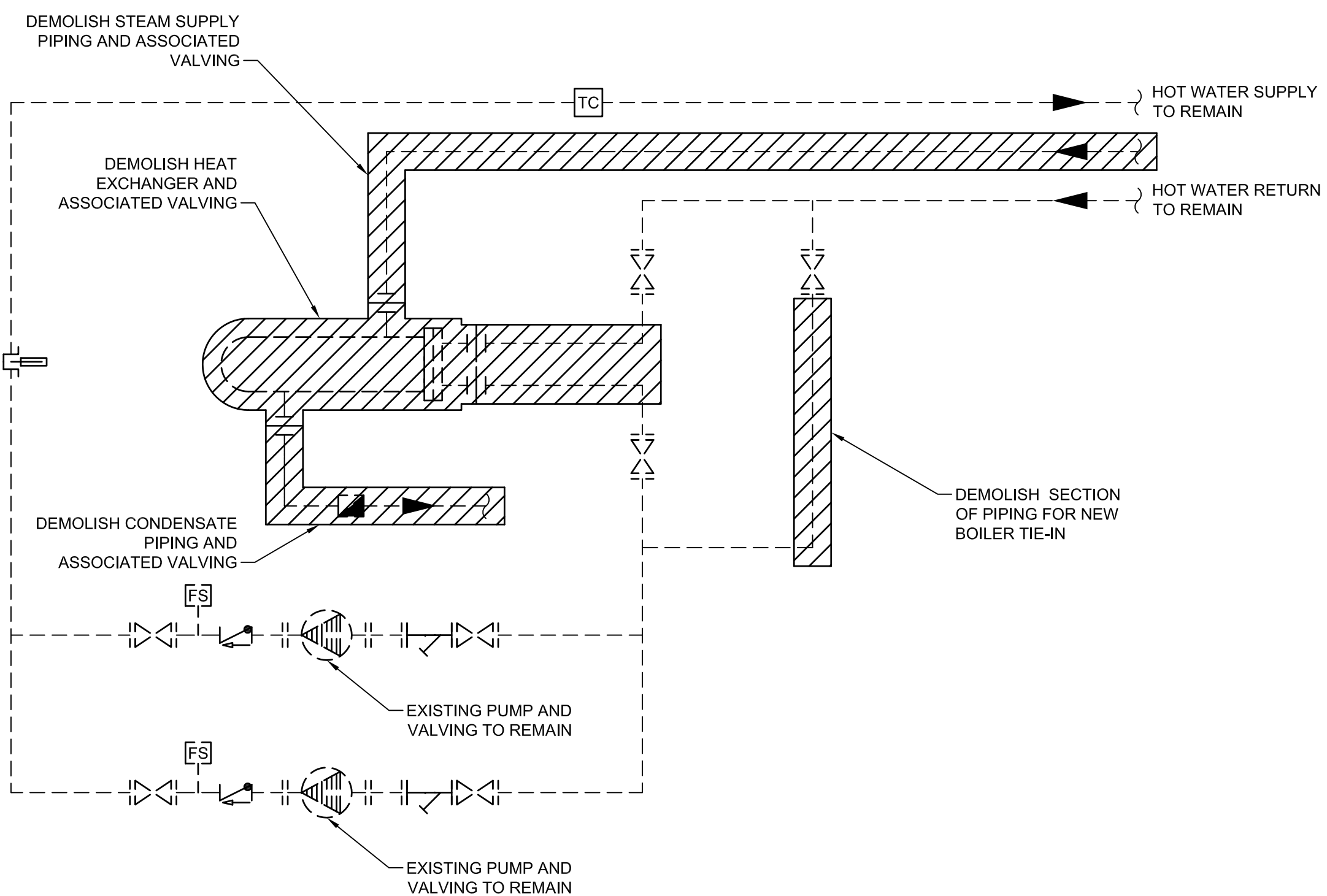


PARTIAL BASEMENT FLOOR PLAN - DEMOLITION



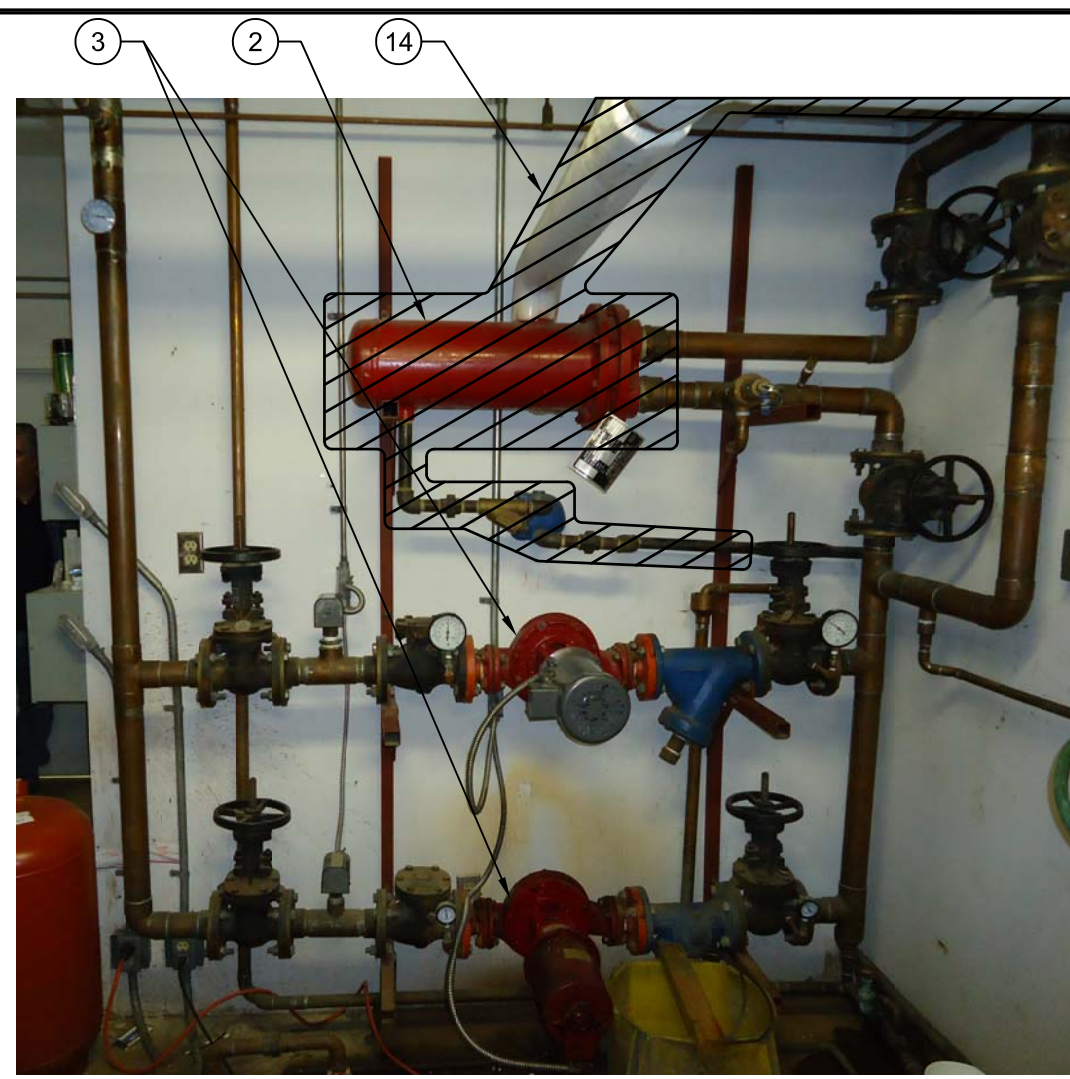
Scale 1:50



5 HYDRONIC HEATING SCHEMATIC - DEMOLITION

M-102

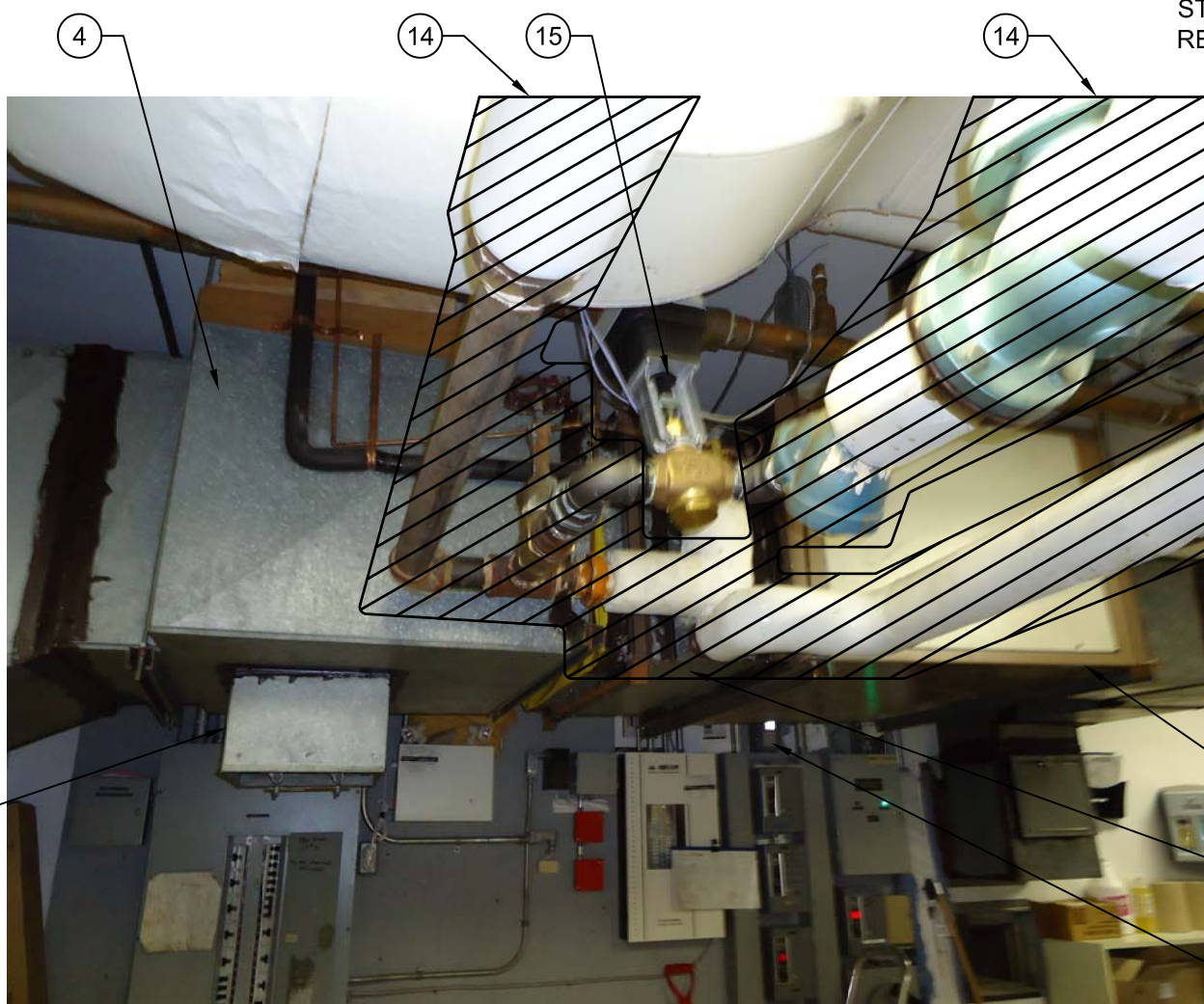
NTS



1 HEAT EXCHANGER AND PUMPS

M-102

Scale NTS



2 FAN COIL SYSTEM

M-102

Scale NTS



3 RETURN AIR OPENING

M-102

Scale NTS

DEMOLITION NOTES

- 1 EXISTING ELEVATOR ROOM EXHAUST FAN AND ASSOCIATED DUCTWORK AND CONTROLS TO REMAIN.
- 2 EXISTING HEAT EXCHANGER AND ASSOCIATED CONDENSATE PIPING AND VALVING TO BE DEMOLISHED.
- 3 EXISTING CIRCULATION PUMPS TO REMAIN. PUMPS SHOWN AWAY FROM WALL FOR CLARITY.
- 4 DUCTWORK AND INSULATION TO REMAIN.
- 5 CAP (c/w WELDED FLANGE, BLANKING PLATE AND GASKET) EXISTING 125mm STEAM SUPPLY AND CONDENSATE LINES AT WALL. CAP STEAM LINES AT 212 RUE DUMOULIN AS WELL.
- 6 EXISTING ELECTRICAL PANEL TO REMAIN.
- 7 EXISTING SUMP FEED LINE TO REMAIN.
- 8 COOLING TOWER AND ALL ASSOCIATED PIPING AND CONTROLS TO REMAIN.
- 9 OUTDOOR CONDENSING UNIT AND ALL ASSOCIATED REFRIGERANT PIPING AND CONTROLS TO REMAIN.
- 10 ELECTRIC BASEBOARD HEATER TO REMAIN.
- 11 STEAM HEATING COIL AND 25mm DEEP FILTER BANK TO BE DEMOLISHED.
- 12 HONEYWELL CONTROLLER SERVING EXISTING STEAM HEATING COIL CONTROL VALVE TO BE REMOVED. TURN OVER TO CITY.
- 13 MAKE-UP AIR UNIT AND ALL ASSOCIATED DUCTWORK AND CONTROLS TO REMAIN.
- 14 STEAM SUPPLY, CONDENSATE LINES, INSULATION AND JACKETING TO BE DEMOLISHED WITHIN MECHANICAL ROOM IN THEIR ENTIRETY. ALL ASSOCIATED CONTROLS AND VALVING TO BE DEMOLISHED UNLESS OTHERWISE NOTED.
- 15 ACTUATOR SERVING EXISTING STEAM HEATING COIL AND HEAT EXCHANGER TO BE REMOVED. TURN OVER VALVE AND ACTUATOR TO CITY.
- 16 SUMP TANK AND ASSOCIATED PUMP AND CONTROLS TO REMAIN.
- 17 SUMP PIT AND ASSOCIATED PUMP AND CONTROLS TO REMAIN.
- 18 EXPANSION TANK TO REMAIN.
- 19 EXISTING MOP SINK TO REMAIN.
- 20 EXISTING DOMESTIC HOT WATER HEATER TO REMAIN.
- 21 EXISTING RETURN AIR OPENING TO BE CLOSED OFF AND SEALED. MAINTAIN 2 HR. FIRE RATING.
- 22 EXISTING Ø100 SANITARY STACK TO REMAIN.
- 23 EXISTING RETURN AIR DAMPER AND ACTUATOR REMOVED FOR RELOCATION. PATCH AND SEAL DUCT OPENING.
- 24 EXISTING METASYS PANELS TO REMAIN.

NOTES:

GENERAL NOTES

- 1. COORDINATE WITH OTHER TRADES SO AS TO PREVENT CONFLICTS. DEMOLITION OF EXISTING STEAM LINES AND HEAT EXCHANGER SHALL ONLY BE DONE WHEN NEW BOILER SYSTEM IS COMMISSIONED AND READY TO BE TIED INTO BUILDING HEAT PUMP LOOP TO MINIMIZE INTERRUPTION TO BUILDING HEAT PUMPS.
- 2. ASBESTOS WARNING - DUE TO THE AGE OF THE EXISTING PLANT, ASBESTOS MAY BE PRESENT IN THE CONSTRUCTION (E.G. ON THE STEAM PIPE, BOILER). PRIOR TO DEMOLITION CONFIRM WITH THE OWNER THAT ALL ASBESTOS HAS BEEN REMOVED, AND IDENTIFY ANY AREAS OF CONCERN.
- 3. DO NOT START DEMOLITION UNTIL PRE-CONSTRUCTION TESTING OF EXISTING EQUIPMENT HAS BEEN COMPLETED. SEE SPECIFICATIONS SECTION 23 05 93.
- 4. DO NOT START DEMOLITION UNTIL NEW SYSTEMS ARE READY TO BE TIED INTO EXISTING.



This drawing has been prepared for the use of AECOM's client and may not be used, reproduced or relied upon by third parties, except as agreed by AECOM and its client, as required by law or for use by governmental reviewing agencies. AECOM accepts no responsibility, and denies any liability whatsoever, to any party that modifies this drawing without AECOM's express written consent. Do not scale this document. All measurements must be obtained from stated dimensions.

No.	REVISION/DESCRIPTION	BY	DATE
0	ISSUED FOR TENDER	DL	2012.12.14

SEAL

DRAWN	DL	CHECKED	PVL	DESIGNED	DC	APPROVED
DATE	2012.11.02	USER	APPROVAL			

THE CITY OF WINNIPEG
PLANNING, PROPERTY AND
DEVELOPMENT DEPARTMENT
MUNICIPAL ACCOMMODATIONS DIVISION
3-65 GARRY STREET, R3C 4K4

PROJECT
CIVIC OFFICES
NEW BOILER INSTALLATION
CITY BID OPP. NO: 886-2012
219 PROVENCHEUR BOULEVARD, WINNIPEG, MANITOBA

SHEET TITLE
MECHANICAL
PARTIAL BASEMENT FLOOR PLAN
DEMOLITION, SCHEMATIC, NOTES

SCALE	PROJECT No:	SHEET No:
AS SHOWN	60280355	M-102