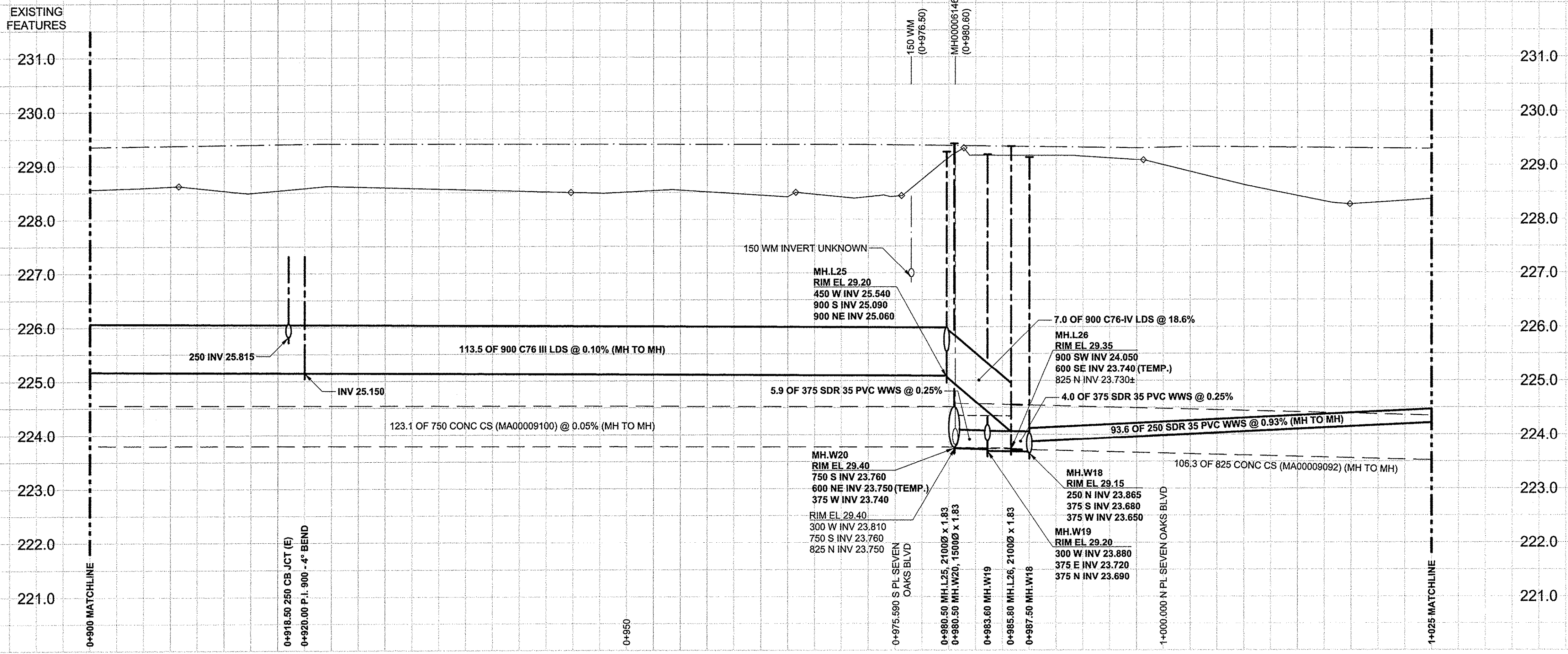


D SIZE 22" x 34" (559mm x 864mm)

PLOT: 11/7/2012 1:34:34 PM

AECOM REVIEW DRFT CHK

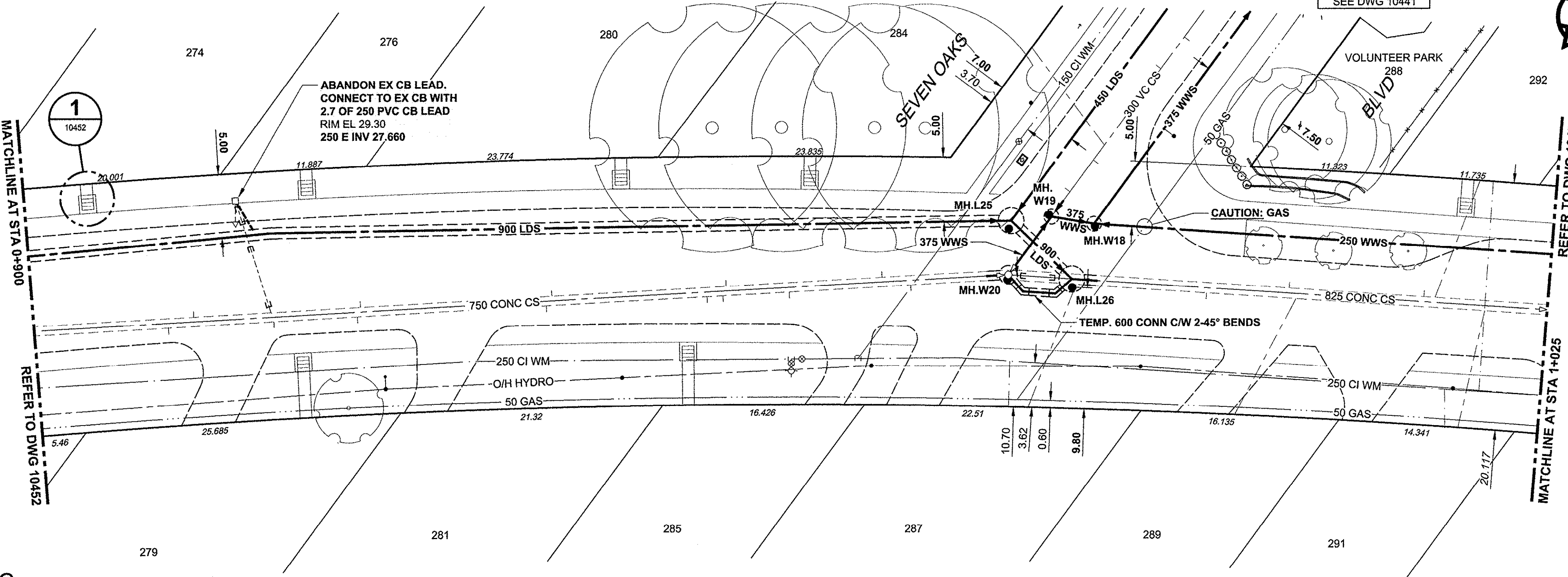


231.0
230.0
229.0
228.0
227.0
226.0
225.0
224.0
223.0
222.0
221.0

CHAINAGE ALONG N PL

SCOTIA STREET

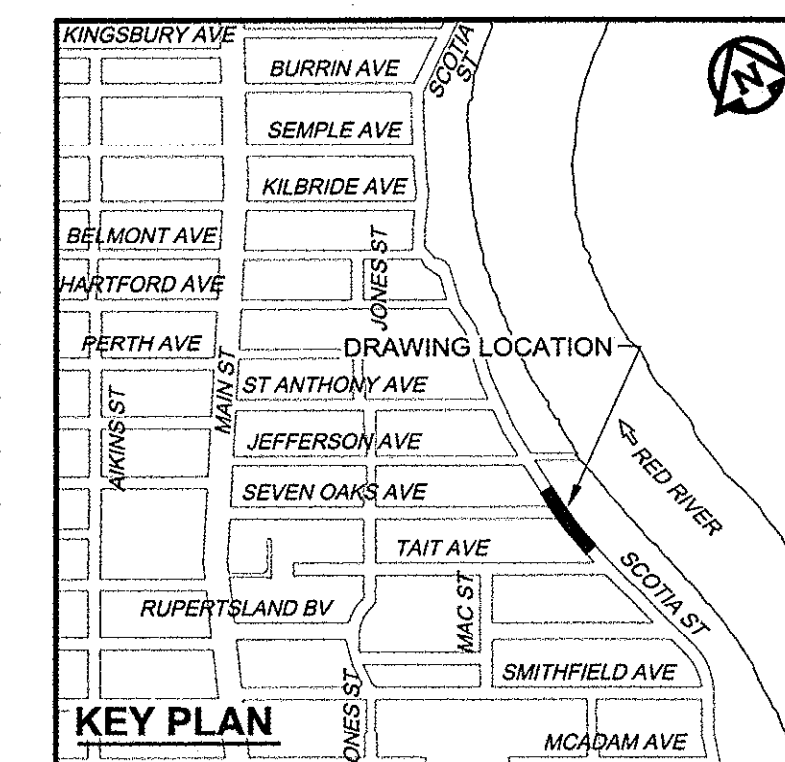
FOR FURTHER INFO SEE DWG 10441



ADDRESS	PL TIE (SHORT/LONG)	JUNCTION TIE	REMARKS
275 SCOTIA			NO INFO
280 SCOTIA			NO INFO
281 SCOTIA		37.8m S MH SEVEN OAKS	APPROXIMATE.
284 SCOTIA			NO INFO
285 SCOTIA		23.2m S MH SEVEN OAKS	IN THE FIELD.
287 SCOTIA		100.3m S MH JEFFERSON	
288 SCOTIA			NO INFO
289 SCOTIA		82.9m S MH JEFFERSON	
291 SCOTIA		67.7m S MH JEFFERSON	
292 SCOTIA		71.9m S MH JEFFERSON	

- CONSTRUCTION NOTES:**
- FOR DETAILED TEST HOLE INFORMATION, SEE SPECIFICATION.
 - LOCATION OF SERVICES SHOWN ON DRAWINGS ARE APPROXIMATE.
 - CONFIRM LOCATION OF ALL WATER & WASTEWATER SERVICES IN THE FIELD.
 - INSTALL NEW SEWERS, CATCHBASIN LEADS AND WATERMANS BY TRENCHLESS METHODS.
 - ALL SHAFTS SHALL HAVE CLASS 3 BACKFILL.
 - RENEW SEWER SERVICES TO PROPERTY LINE AND PLUG EXISTING SERVICE AS PER SD-021 (SEVEN OAKS TO JEFFERSON)

ADDRESS	DISTANCE	PROPERTY	SIZE (mm)	SHORT & LONG MEASUREMENT	CORPORATION LOCATION	REMARKS
275 SCOTIA	10.00		16	4m NSL OF HOUSE		0.46m S OF S/C
280 SCOTIA		HOUSE 9/0	20	39.7m S HYD S SEVEN OAKS		
281 SCOTIA	10.30		20	3.5m S N B/C		
284 SCOTIA			20	4.7m S N L/L		OPP S/C
285 SCOTIA	10.80		20	23.7m S HYD S SEVEN OAKS		0.15m N OF S/C
287 SCOTIA	10.00		20	9.9m S HYD S SEVEN OAKS		0.15m N OF S/C
288 SCOTIA			20	7.9m NSL OF HOUSE		
289 SCOTIA			20	17.6m N HYD S SEVEN OAKS		
291 SCOTIA	9.20		16	5.9m NSL OF HOUSE		OPP S/C
292 SCOTIA	0.50		16	53.1m N HYD S SEVEN OAKS		OPP S/C
			16	2m SNL OF HOUSE		OPP S/C
			16	19.8m NNL OF SEVEN OAKS		



WARNING
IF POWER EQUIPMENT OR EXPLOSIVES ARE TO BE USED FOR EXCAVATION ON THIS PROJECT, THE CONTRACTOR MUST:
1) NOTIFY THE GAS COMPANY OF THE PROPOSED LOCATION OF EXCAVATION.
2) TAKE PRECAUTION TO AVOID DAMAGE TO GAS COMPANY INSTALLATIONS.
SEE PROVINCIAL REGULATION 140/92 FOR DETAILS

150 WM	WATERMAIN	150 WM	EXISTING	CURB STOP	NEW	150 WM	WATERMAIN	150 WM	EXISTING	WATERMAIN	150 WM	EXISTING
+	HYDRANT	+	+	REDUCER	+	+	HYDRANT	+	+	HYDRANT	+	+
+	VALVE	+	+	COUPLING	+	+	VALVE	+	+	VALVE	+	+
+	LAND DRAINAGE SEWER	+	+	ANODE	+	+	LAND DRAINAGE SEWER	+	+	LAND DRAINAGE SEWER	+	+
+	WASTE WATER SEWER	+	+	HYDRO	+	+	WASTE WATER SEWER	+	+	WASTE WATER SEWER	+	+
○	MANHOLE	○	○	MTS	○	○	MANHOLE	○	○	MANHOLE	○	○
□	CATCH BASIN	□	□	GAS	□	□	CATCH BASIN	□	□	CATCH BASIN	□	□
△	CURB INLET	△	△	TESTHOLE	△	△	CURB INLET	△	△	CURB INLET	△	△
▭	CULVERT	▭	▭	LAMP STANDARD	▭	▭	CULVERT	▭	▭	CULVERT	▭	▭
+	PIPE ABANDONMENTS	+	+	TREE	+	+	PIPE ABANDONMENTS	+	+	PIPE ABANDONMENTS	+	+
+	SURVEY BAR	+	+		+	+	SURVEY BAR	+	+	SURVEY BAR	+	+
+	EXISTING	+	+		+	+	EXISTING	+	+	EXISTING	+	+

LOCATION APPROVED
UNDERGROUND STRUCTURES

DATE COMMITTEE

NOTE:
LOCATION OF UNDERGROUND STRUCTURES AS SHOWN ARE BASED ON THE BEST INFORMATION AVAILABLE. BUT NO GUARANTEE IS GIVEN THAT ALL EXISTING UTILITIES ARE SHOWN OR THAT THE GIVEN LOCATIONS ARE EXACT. CONFIRMATION OF EXISTENCE AND EXACT LOCATION OF ALL SERVICES MUST BE OBTAINED FROM THE INDIVIDUAL UTILITIES BEFORE PROCEEDING WITH CONSTRUCTION.

NO.	ISSUED FOR CONSTRUCTION	DATE	BY
0	ISSUED FOR CONSTRUCTION	12/11/13	ADL
NO.	REVISIONS	YY/MM/DD	BY

METRIC
WHOLE NUMBERS INDICATE MILLIMETRES
DECIMALIZED NUMBERS INDICATE METRES

AECOM

DESIGNED BY: FMI
DRAWN BY: ADL
CHECKED BY: EOT
APPROVED BY: [Signature]
HOR. SCALE: 1:250
VERT. SCALE: 1:50
DATE: Nov 13, 2012

APEGM
Certificate of Authorization
AECOM Canada Ltd.
No. 4671 Date: Nov 13, 2012

PROFESSIONAL'S SEAL
TOUPIN
Member
23484
REGISTERED PROFESSIONAL ENGINEER
CONSULTANT DRAWING NO.
60219315-SHT-30-Ph02 C-0018

THE CITY OF WINNIPEG
WATER AND WASTE DEPARTMENT

JEFFERSON EAST
COMBINED SEWER RELIEF
CONTRACT 2
SCOTIA STREET
20m NORTH OF TAIT AVENUE TO
55m SOUTH OF JEFFERSON AVENUE

SHEET 18 OF 19
CITY DRAWING NUMBER
10453
REV 0

BID OPPORTUNITY NO. 863-2012