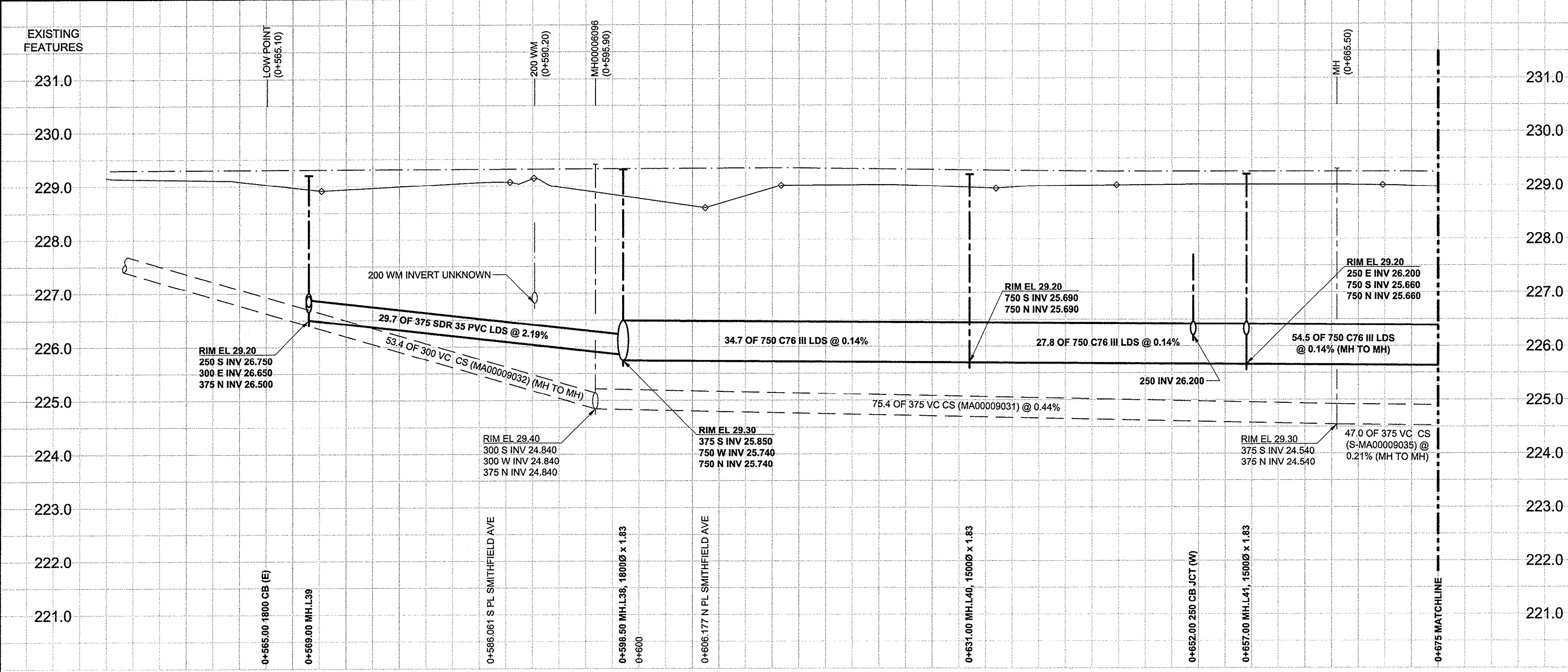


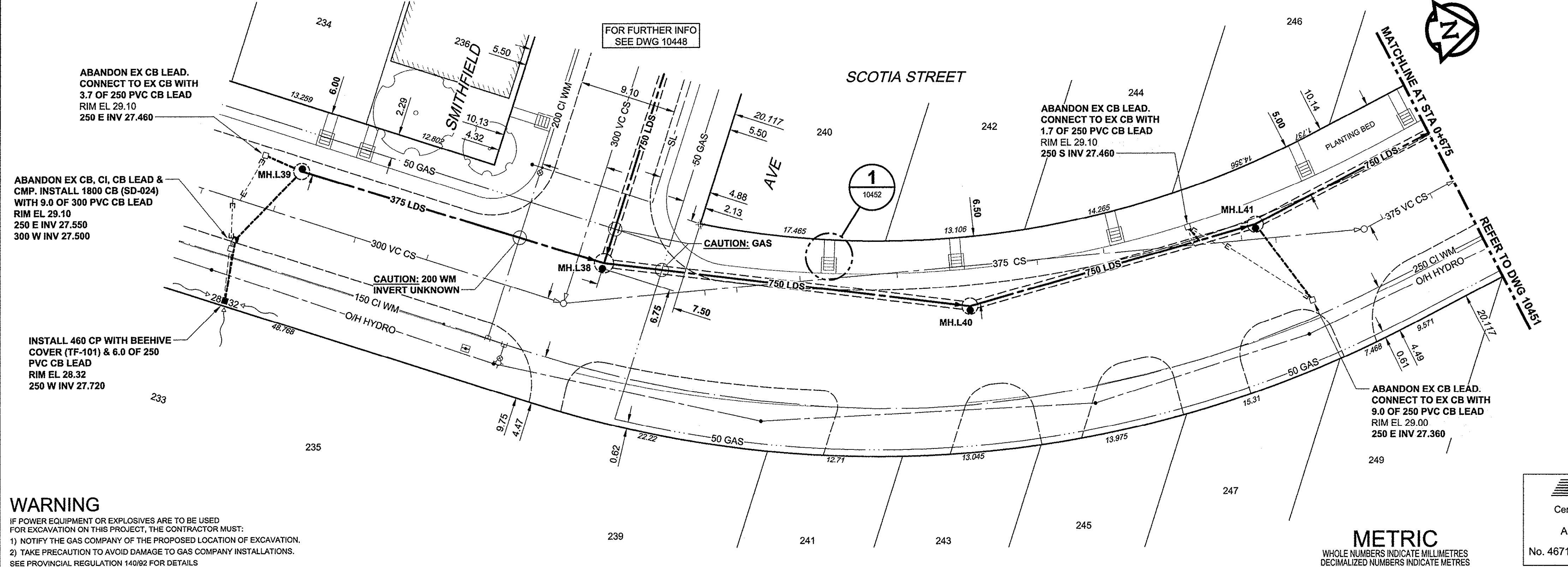
D SIZE 22" x 34" (569mm x 864mm)

PLOT: 11/13/2012 8:57:36 AM

AECOM REVIEW DRFT CHK

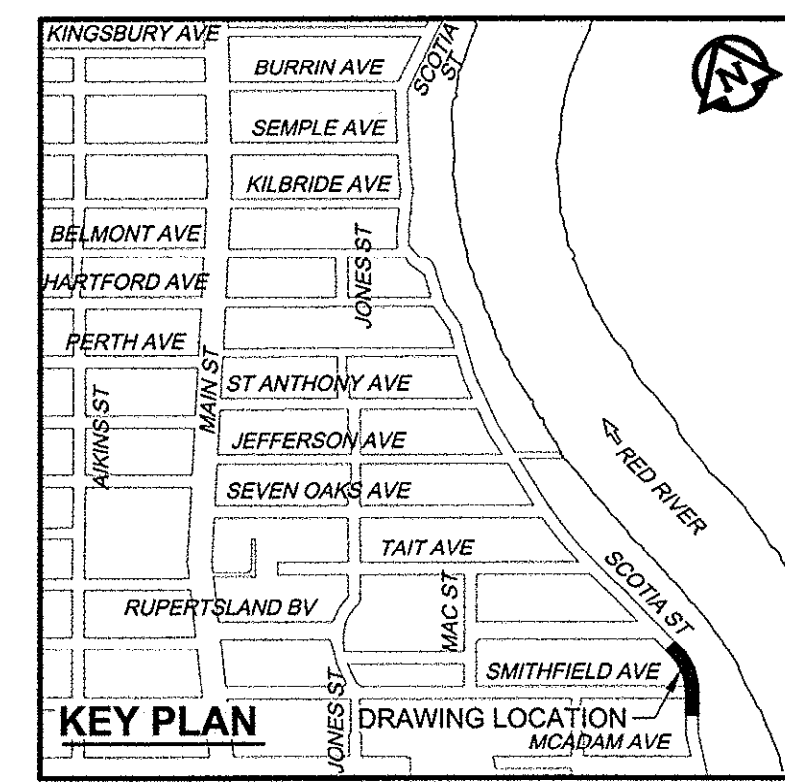


CHAINAGE ALONG N PL



**WARNING**  
IF POWER EQUIPMENT OR EXPLOSIVES ARE TO BE USED FOR EXCAVATION ON THIS PROJECT, THE CONTRACTOR MUST:  
1) NOTIFY THE GAS COMPANY OF THE PROPOSED LOCATION OF EXCAVATION.  
2) TAKE PRECAUTION TO AVOID DAMAGE TO GAS COMPANY INSTALLATIONS.  
SEE PROVINCIAL REGULATION 140/92 FOR DETAILS

- CONSTRUCTION NOTES:**
- FOR DETAILED TEST HOLE INFORMATION, SEE SPECIFICATION.
  - LOCATION OF SERVICES SHOWN ON DRAWINGS ARE APPROXIMATE.
  - CONFIRM LOCATION OF ALL WATER & WASTEWATER SERVICES IN THE FIELD.
  - INSTALL NEW SEWERS, CATCHBASIN LEADS AND WATERMANS BY TRENCHLESS METHODS.
  - ALL SHAFTS SHALL HAVE CLASS 3 BACKFILL.



**AECOM**  
Certificate of Authorization  
AECOM Canada Ltd.  
No. 4671 Date: Nov 13, 2012

**METRIC**  
WHOLE NUMBERS INDICATE MILLIMETRES  
DECIMALIZED NUMBERS INDICATE METRES

150 WM	WATERMAIN	150 WM	150 WM	150 WM	WATERMAIN	150 WM	150 WM	150 WM
○	HYDRANT	○	○	○	HYDRANT	+	+	+
○	VALVE	○	○	○	VALVE	+	+	+
○	LAND DRAINAGE SEWER	○	○	○	LAND DRAINAGE SEWER	+	+	+
○	WASTE WATER SEWER	○	○	○	WASTE WATER SEWER	+	+	+
○	MANHOLE	○	○	○	MANHOLE	○	○	○
○	CATCH BASIN	○	○	○	CATCH BASIN	○	○	○
○	CURB INLET	○	○	○	CURB INLET	○	○	○
○	CULVERT	○	○	○	CULVERT	○	○	○
○	PIPE ABANDONMENTS	○	○	○	PIPE ABANDONMENTS	○	○	○
○	SURVEY BAR	○	○	○	SURVEY BAR	○	○	○
○	EXISTING	○	○	○	NEW	○	○	○
○	LEGEND - PLAN	○	○	○	EXISTING	○	○	○
○	LEGEND - PLAN	○	○	○	NEW	○	○	○
○	LEGEND - PROFILE	○	○	○	EXISTING	○	○	○
○	LEGEND - PROFILE	○	○	○	NEW	○	○	○

**LOCATION APPROVED**  
UNDERGROUND STRUCTURES

SUPR. U/G STRUCTURES DATE COMMITTEE

NOTE: LOCATION OF UNDERGROUND STRUCTURES AS SHOWN ARE BASED ON THE BEST INFORMATION AVAILABLE. BUT NO GUARANTEE IS GIVEN THAT ALL EXISTING UTILITIES ARE SHOWN OR THAT THE GIVEN LOCATIONS ARE EXACT. CONFIRMATION OF EXISTENCE AND EXACT LOCATION OF ALL SERVICES MUST BE OBTAINED FROM THE INDIVIDUAL UTILITIES BEFORE PROCEEDING WITH CONSTRUCTION.

NO.	REVISIONS	DATE	BY
0	ISSUED FOR CONSTRUCTION	12/11/13	ADL
		YYMMDD	

**AECOM**

DESIGNED BY: FMI  
DRAWN BY: ADL  
CHECKED BY: EOT  
APPROVED BY: [Signature]  
HOR. SCALE: 1:250  
VERT. SCALE: 1:50  
DATE: Nov 13, 2012

PROFESSIONAL'S SEAL  
E.D.J. TOUPIN  
Member  
23484  
Nov 13, 2012  
CONSULTANT DRAWING NO.  
60219315-SHT-30-Ph02-C-0015

**THE CITY OF WINNIPEG**  
WATER AND WASTE DEPARTMENT

JEFFERSON EAST  
COMBINED SEWER RELIEF  
CONTRACT 2  
SCOTIA STREET

SMITHFIELD AVENUE TO  
25m SOUTH OF RUPERTSLAND BOULEVARD

SHEET 15 OF 19  
CITY DRAWING NUMBER  
10450  
REV 0

BID OPPORTUNITY NO. 863-2012