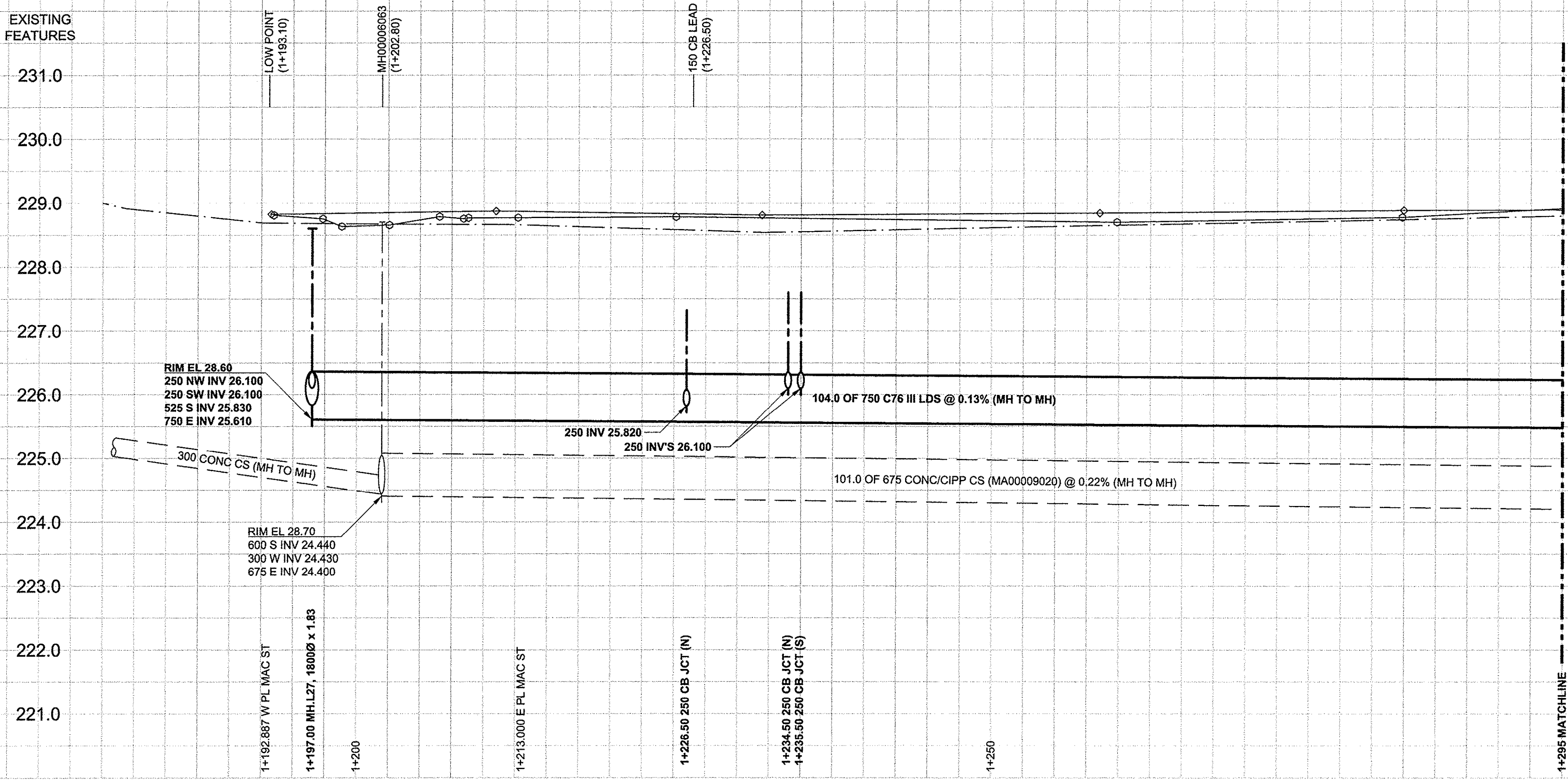


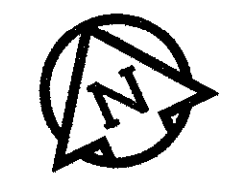
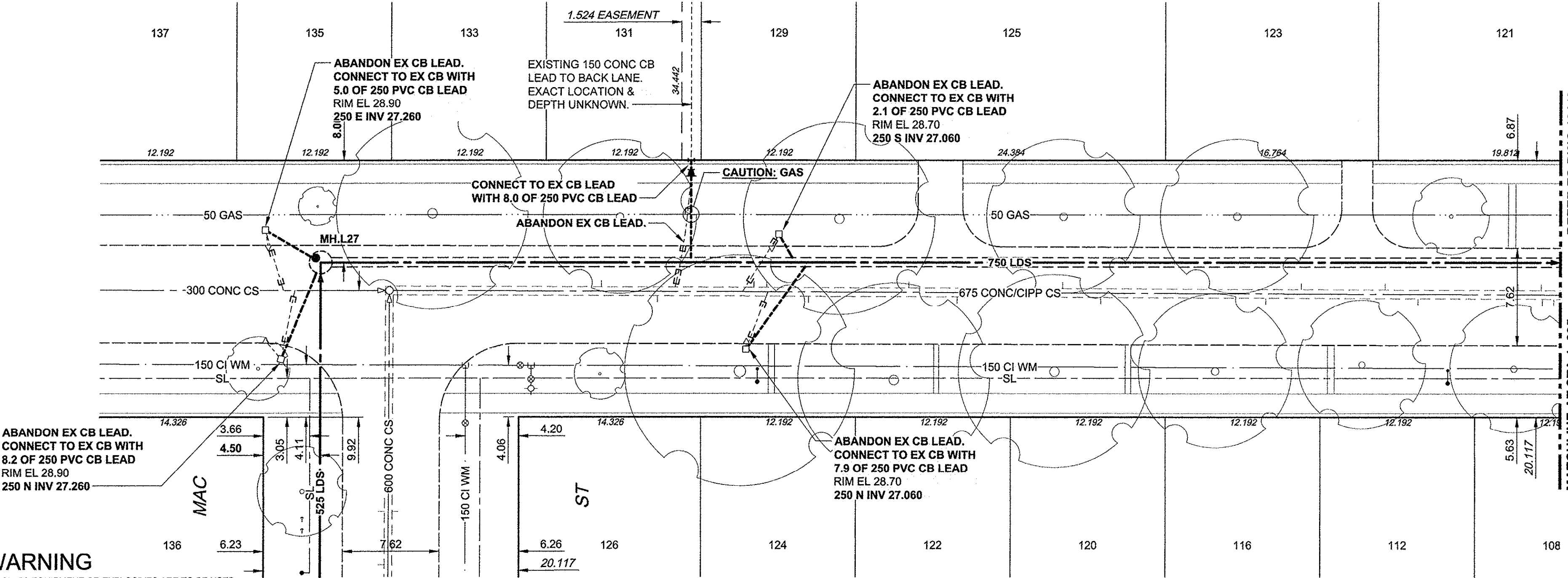
D SIZE 22" x 34" (559mm x 864mm)

PLOT: 11/8/2012 6:45:23 AM

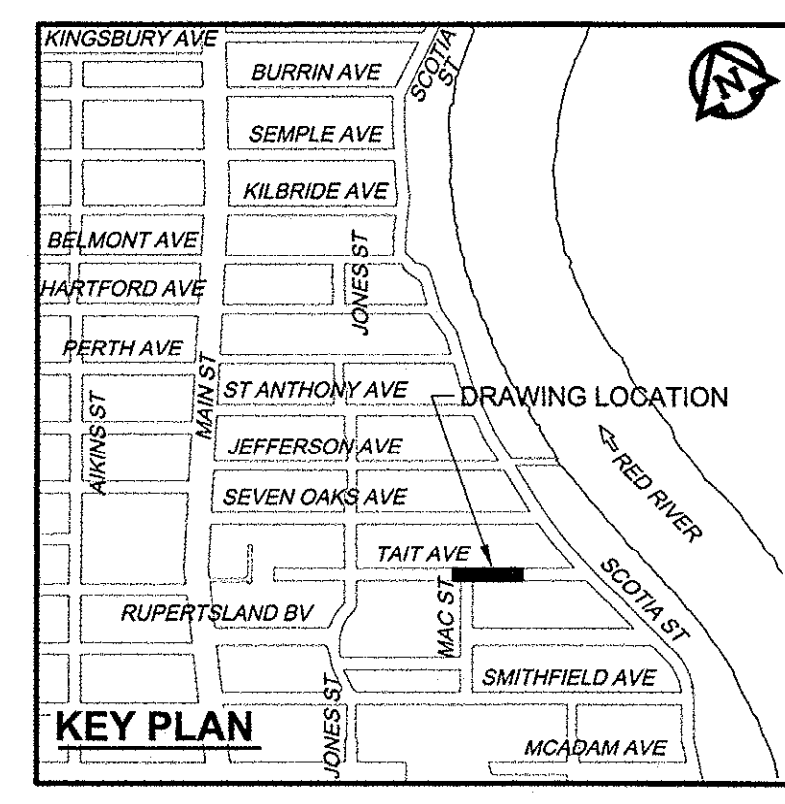
AECOM FILE NAME: 60219315-SHT-30-Ph02 C-0007.dwg Saved By: [Signature]



TAIT AVENUE



- CONSTRUCTION NOTES:**
- FOR DETAILED TEST HOLE INFORMATION, SEE SPECIFICATION.
 - LOCATION OF SERVICES SHOWN ON DRAWINGS ARE APPROXIMATE.
 - CONFIRM LOCATION OF ALL WATER & WASTEWATER SERVICES IN THE FIELD.
 - INSTALL NEW SEWERS, CATCHBASIN LEADS AND WATERMANS BY TRENCHLESS METHODS.
 - ALL SHAFTS SHALL HAVE CLASS 3 BACKFILL.



WARNING
 IF POWER EQUIPMENT OR EXPLOSIVES ARE TO BE USED FOR EXCAVATION ON THIS PROJECT, THE CONTRACTOR MUST:
 1) NOTIFY THE GAS COMPANY OF THE PROPOSED LOCATION OF EXCAVATION.
 2) TAKE PRECAUTION TO AVOID DAMAGE TO GAS COMPANY INSTALLATIONS.
 SEE PROVINCIAL REGULATION 140/92 FOR DETAILS

FOR FURTHER INFO SEE DWG 10449

APECM
 Certificate of Authorization
 AECOM Canada Ltd.
 No. 4671 Date: Nov 13, 2012

METRIC
 WHOLE NUMBERS INDICATE MILLIMETRES
 DECIMALIZED NUMBERS INDICATE METRES

LEGEND - PLAN	LEGEND - PROFILE	LEGEND - PLAN	LEGEND - PROFILE
150 WM	150 WM	150 WM	150 WM
HYDRANT	HYDRANT	HYDRANT	HYDRANT
VALVE	VALVE	VALVE	VALVE
300 LDS	300 LDS	300 LDS	300 LDS
LAND DRAINAGE SEWER	LAND DRAINAGE SEWER	LAND DRAINAGE SEWER	LAND DRAINAGE SEWER
WASTE WATER SEWER	WASTE WATER SEWER	WASTE WATER SEWER	WASTE WATER SEWER
MANHOLE	MANHOLE	MANHOLE	MANHOLE
CATCH BASIN	CATCH BASIN	CATCH BASIN	CATCH BASIN
CURB INLET	CURB INLET	CURB INLET	CURB INLET
CULVERT	CULVERT	CULVERT	CULVERT
PIPE ABANDONMENTS	PIPE ABANDONMENTS	PIPE ABANDONMENTS	PIPE ABANDONMENTS
SURVEY BAR	SURVEY BAR	SURVEY BAR	SURVEY BAR
EXISTING	EXISTING	NEW	NEW

LOCATION APPROVED
 UNDERGROUND STRUCTURES

DATE: _____

NOTE: LOCATION OF UNDERGROUND STRUCTURES AS SHOWN ARE BASED ON THE BEST INFORMATION AVAILABLE. BUT NO GUARANTEE IS GIVEN THAT ALL EXISTING UTILITIES ARE SHOWN OR THAT THE GIVEN LOCATIONS ARE EXACT. CONFIRMATION OF EXISTENCE AND EXACT LOCATION OF ALL SERVICES MUST BE OBTAINED FROM THE INDIVIDUAL UTILITIES BEFORE PROCEEDING WITH CONSTRUCTION.

NO.	REVISIONS	DATE	BY
0	ISSUED FOR CONSTRUCTION	12/11/13	ADL
		YYMMDD	

AECOM

DESIGNED BY: FMI
 DRAWN BY: ADL
 CHECKED BY: EDT
 APPROVED BY: [Signature]
 HOR. SCALE: 1:250
 VERT. SCALE: 1:50
 DATE: Nov 13, 2012

PROFESSIONAL'S SEAL
E.D.J. TOUPIN
 Member
 23484
 Registered Professional Engineer
 CONSULTANT DRAWING NO. 60219315-SHT-30-Ph02 C-0007

THE CITY OF WINNIPEG
 WATER AND WASTE DEPARTMENT

JEFFERSON EAST
COMBINED SEWER RELIEF
CONTRACT 2
TAIT AVENUE

150m EAST OF JONES STREET TO
 105m WEST OF SCOTIA STREET

SHEET 07 OF 19
 CITY DRAWING NUMBER
10442
 REV 0

BID OPPORTUNITY NO. 863-2012