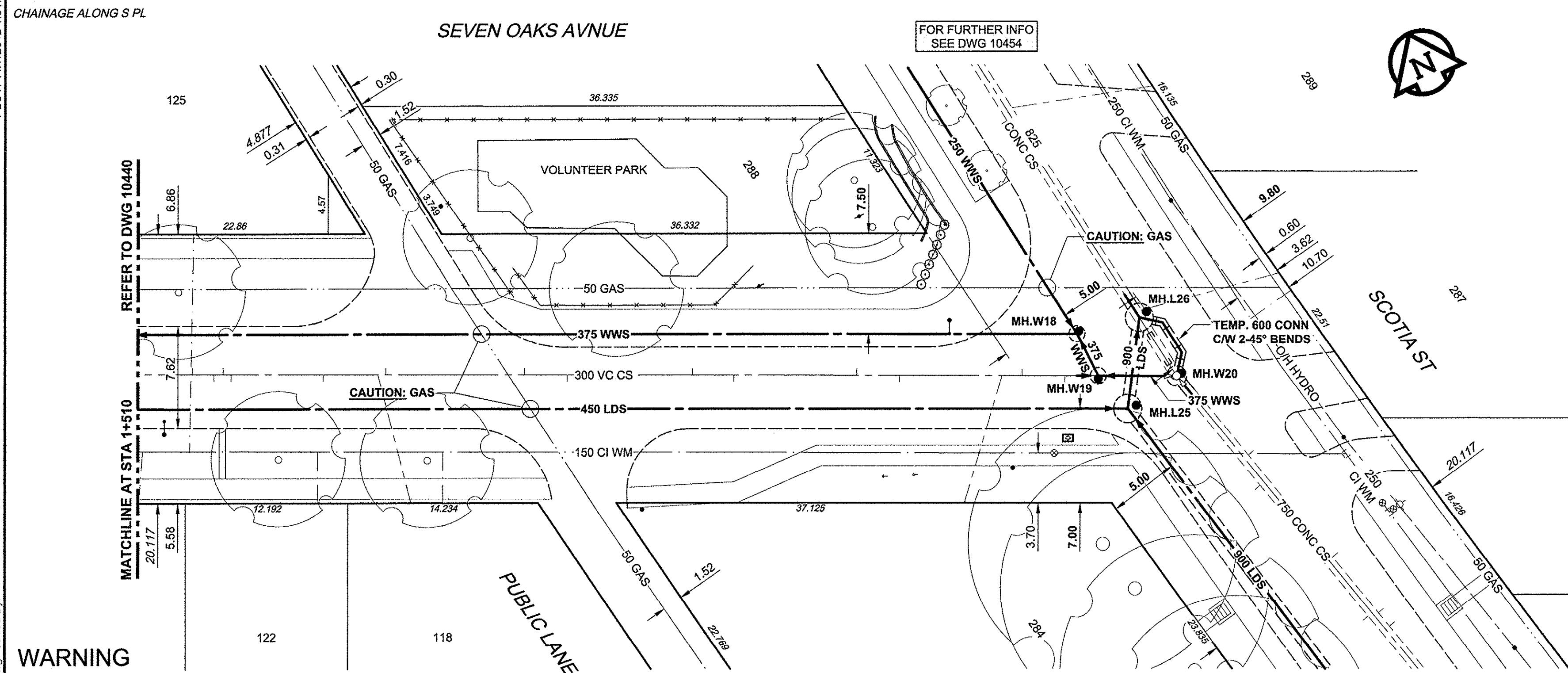
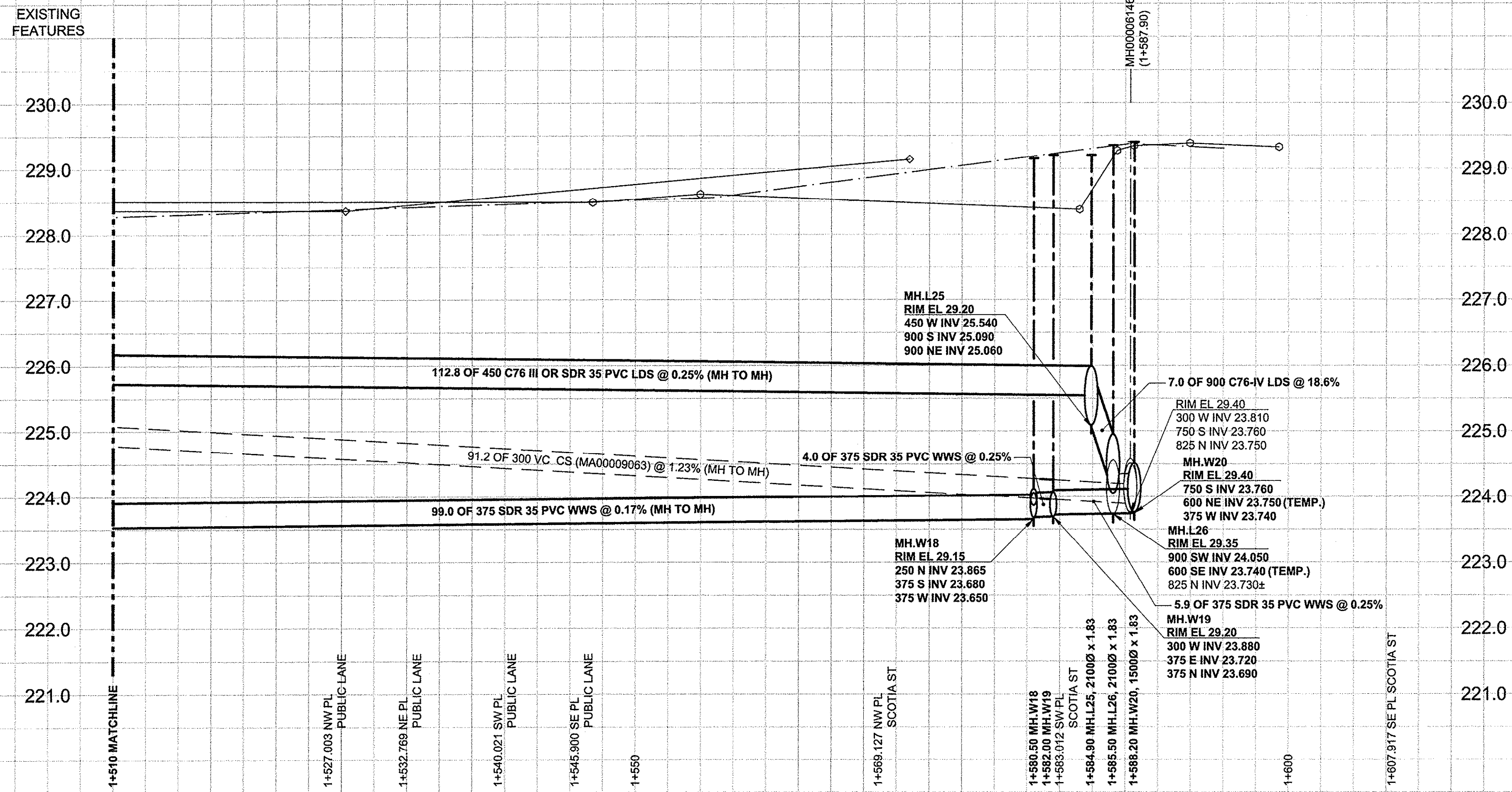


D SIZE 22" x 34" (558mm x 864mm)

PLOT: 11/17/2012 1:31:33 PM

AECOM REVIEW DRAFT CHK

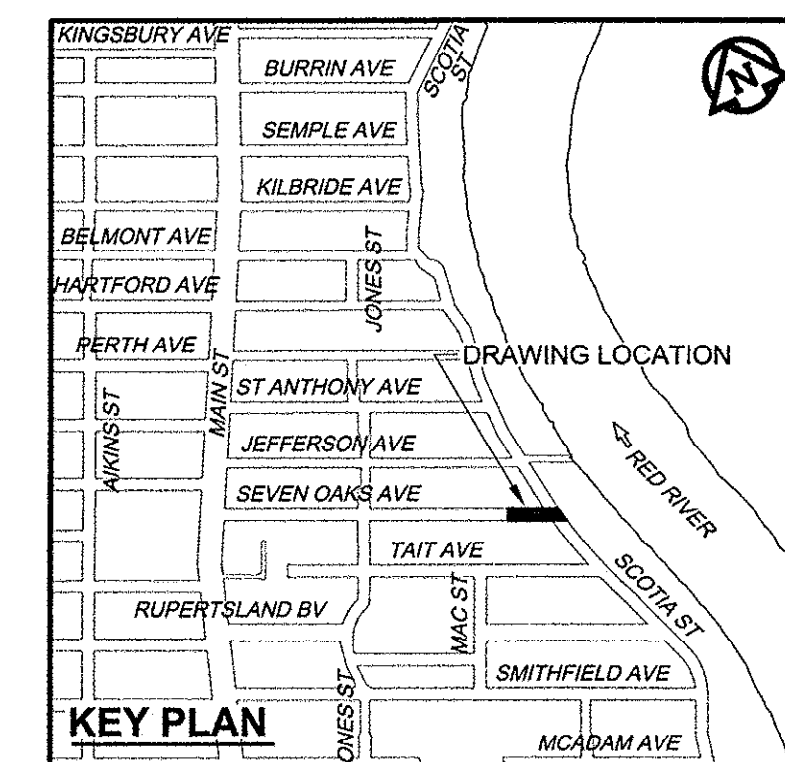


WARNING
 IF POWER EQUIPMENT OR EXPLOSIVES ARE TO BE USED FOR EXCAVATION ON THIS PROJECT, THE CONTRACTOR MUST:
 1) NOTIFY THE GAS COMPANY OF THE PROPOSED LOCATION OF EXCAVATION.
 2) TAKE PRECAUTION TO AVOID DAMAGE TO GAS COMPANY INSTALLATIONS.
 SEE PROVINCIAL REGULATION 140/92 FOR DETAILS

FOR FURTHER INFO SEE DWG 10454

FOR FURTHER INFO SEE DWG 10453

- CONSTRUCTION NOTES:**
- FOR DETAILED TEST HOLE INFORMATION, SEE SPECIFICATION.
 - LOCATION OF SERVICES SHOWN ON DRAWINGS ARE APPROXIMATE.
 - CONFIRM LOCATION OF ALL WATER & WASTEWATER SERVICES IN THE FIELD.
 - INSTALL NEW SEWERS, CATCHBASIN LEADS AND WATERMANS BY TRENCHLESS METHODS.
 - ALL SHAFTS SHALL HAVE CLASS 3 BACKFILL.



AECOM
 Certificate of Authorization
 AECOM Canada Ltd.
 No. 4671 Date: Nov 13, 2012

METRIC
 WHOLE NUMBERS INDICATE MILLIMETRES
 DECIMALIZED NUMBERS INDICATE METRES

BID OPPORTUNITY NO. 863-2012

EXISTING	LEGEND - PLAN	NEW	EXISTING	LEGEND - PLAN	NEW	EXISTING	LEGEND - PROFILE	NEW
150 WM	WATERMAIN	150 WM	150 WM	CURB STOP	150 WM	150 WM	WATERMAIN	150 WM
300 LDS	LAND DRAINAGE SEWER	300 LDS	300 LDS	HYDRANT	300 LDS	300 LDS	HYDRANT	300 LDS
250 WWS	WASTE WATER SEWER	250 WWS	250 WWS	REDUCER	250 WWS	250 WWS	VALVE	250 WWS
○	MANHOLE	●	○	COUPLING	○	○	ANODE	○
□	CATCH BASIN	■	□	HYDRO	□	□	MTS	□
△	CURB INLET	▲	△	GAS	△	△	TESTHOLE	△
▽	CULVERT	▼	▽	LAMP STANDARD	▽	▽	TREE	▽
—	PIPE ABANDONMENTS	—	—					
+	SURVEY BAR	+	+					

LOCATION APPROVED
 UNDERGROUND STRUCTURES

DATE: _____

NOTE:
 LOCATION OF UNDERGROUND STRUCTURES AS SHOWN ARE BASED ON THE BEST INFORMATION AVAILABLE. BUT NO GUARANTEE IS GIVEN THAT ALL EXISTING UTILITIES ARE SHOWN OR THAT THE GIVEN LOCATIONS ARE EXACT. CONFIRMATION OF EXISTENCE AND EXACT LOCATION OF ALL SERVICES MUST BE OBTAINED FROM THE INDIVIDUAL UTILITIES BEFORE PROCEEDING WITH CONSTRUCTION.

NO.	ISSUED FOR CONSTRUCTION	DATE	BY
0	ISSUED FOR CONSTRUCTION	12/11/13	ADL
NO.	REVISIONS	YYMMDD	BY

AECOM

DESIGNED BY: FMI
 CHECKED BY: EDI
 DRAWN BY: ADL
 APPROVED BY: [Signature]
 HOR. SCALE: 1:250
 VERT. SCALE: 1:50
 DATE: Nov 13, 2012

PROFESSIONAL'S SEAL
TOUPIN
 Member
 23484
 REGISTERED PROFESSIONAL ENGINEER
 CONSULTANT DRAWING NO.
 60219315-SHT-30-Ph02-C-0006

THE CITY OF WINNIPEG
 WATER AND WASTE DEPARTMENT

JEFFERSON EAST
COMBINED SEWER RELIEF
CONTRACT 2
SEVEN OAKS AVENUE
 230m EAST OF JONES STREET TO SCOTIA STREET

SHEET 06 OF 19
 CITY DRAWING NUMBER
10441
 REV 0