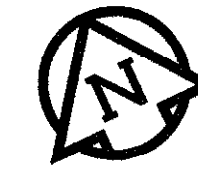
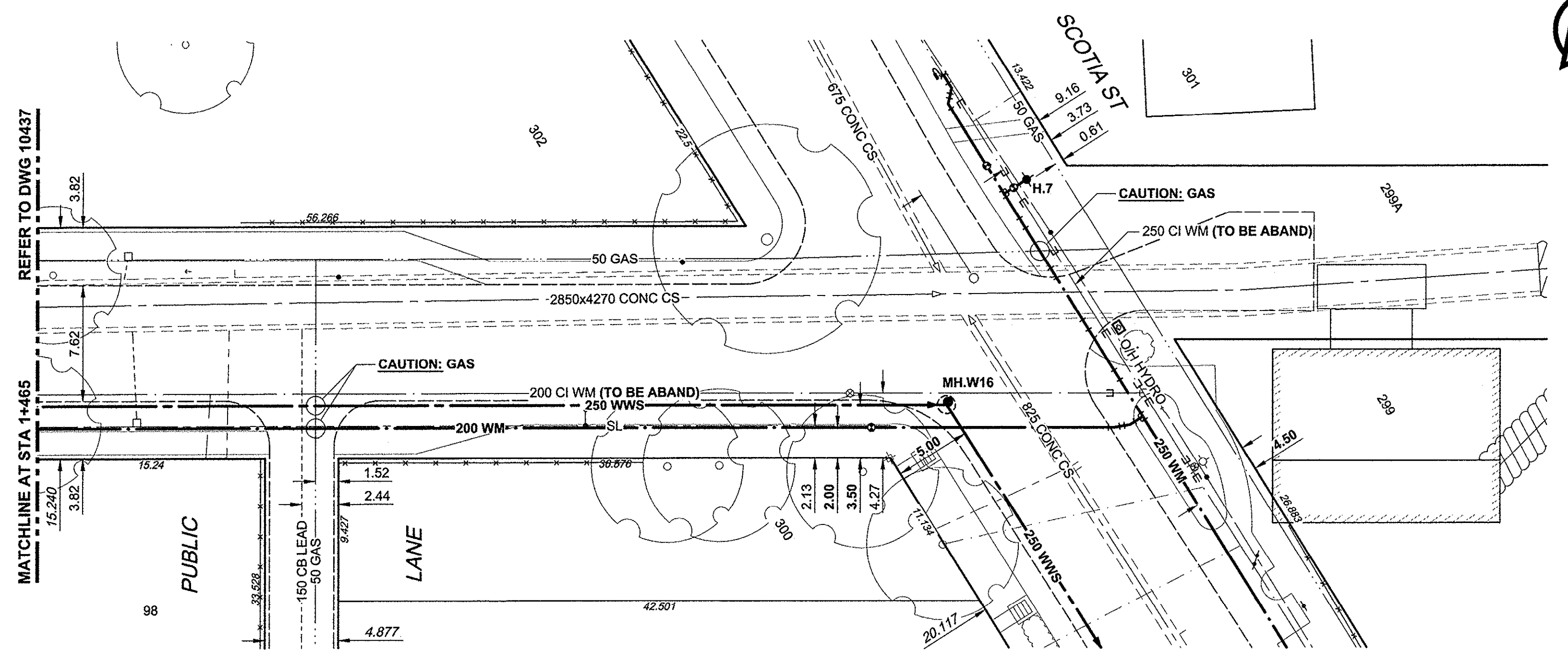


CHAINAGE ALONG S PL

JEFFERSON AVENUE



WATER SERVICE INFORMATION

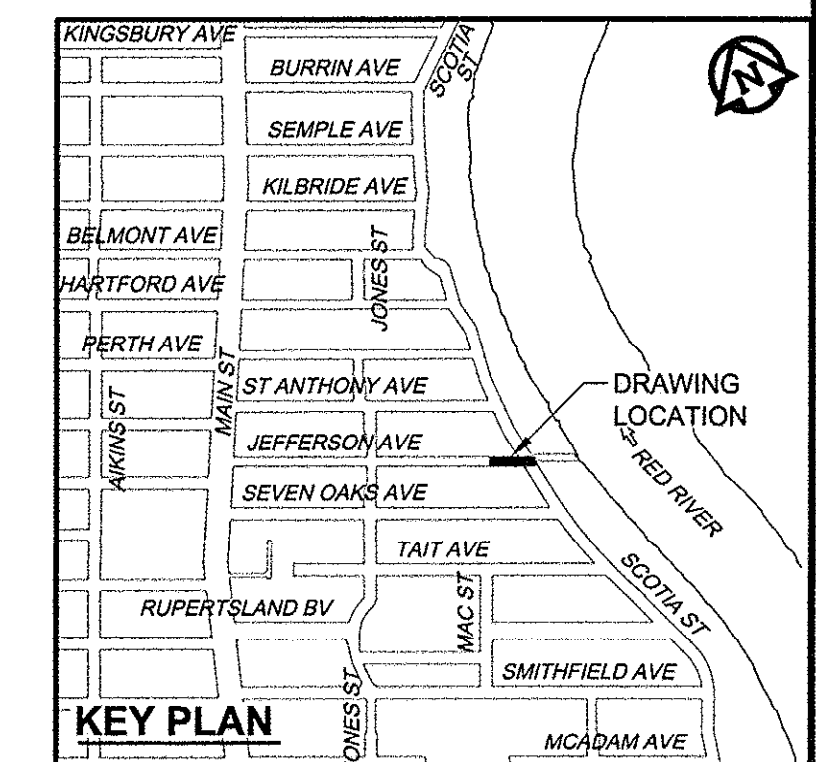
ADDRESS	DISTANCE PROPERTY	SIZE(mm) & TYPE	SHORT & LONG MEASUREMENT	CORPORATION LOCATION	REMARKS
98 JEFFERSON	0.30	20 COPPER	1.9m WEL OF HOUSE 70.5m E 1ST HYD W SCOTIA	0.3m E OF S/C	

SEWER SERVICE INFORMATION

ADDRESS	PL TIE (SHORT/LONG)	JUNCTION TIE	REMARKS
98 JEFFERSON		48.1m W OF MH AT SCOTIA	

CONSTRUCTION NOTES:

- FOR DETAILED TEST HOLE INFORMATION, SEE SPECIFICATION.
- LOCATION OF SERVICES SHOWN ON DRAWINGS ARE APPROXIMATE.
- CONFIRM LOCATION OF ALL WATER & WASTEWATER SERVICES IN THE FIELD.
- NOTIFY ALL AFFECTED RESIDENTS AND BUSINESSES 24 HOURS IN ADVANCE OF ANY SHUT DOWN OR DISRUPTION OF SERVICE.
- INSTALL NEW SEWERS, CATCHBASIN LEADS AND WATERMANS BY TRENCHLESS METHODS.
- ALL SHAFTS SHALL HAVE CLASS 3 BACKFILL.
- MINIMUM COVER TO TOP OF PROPOSED WATERMAIN SHALL BE 2.5m FROM STREET CENTERLINE.
- INSTALL ALL HYDRANTS WITH FLANGE ELEVATION 50mm TO 150mm ABOVE FINISHED GRADE.
- HYDRANT ASSEMBLIES & VERTICAL/HORIZONTAL BENDS SHALL BE FULLY MECHANICALLY RESTRAINED.
- REPLACE ALL EXISTING LEAD SERVICES FROM PROPOSED WATERMAIN TO PROPERTY LINE.
- PROVIDE TRENCH INSULATION WHERE 2.1m OF COVER CANNOT BE PROVIDED FOR WATER SERVICES AS PER SD-018.
- RENEW SEWER SERVICES TO PROPERTY LINE AND PLUG EXISTING SERVICE AS PER SD-021.
- TEMPORARY OVERHEAD STREET LIGHTING AND PERMANENT STREET LIGHTING RESTORATIONS BY OTHERS.



WARNING
 IF POWER EQUIPMENT OR EXPLOSIVES ARE TO BE USED FOR EXCAVATION ON THIS PROJECT, THE CONTRACTOR MUST:
 1) NOTIFY THE GAS COMPANY OF THE PROPOSED LOCATION OF EXCAVATION.
 2) TAKE PRECAUTION TO AVOID DAMAGE TO GAS COMPANY INSTALLATIONS.
 SEE PROVINCIAL REGULATION 140/92 FOR DETAILS

FOR FURTHER INFO SEE DWG 10454

LEGEND - PLAN	NEW	EXISTING	LEGEND - PROFILE	NEW	EXISTING
150 WM	WATERMAIN	150 WM	150 WM	WATERMAIN	150 WM
Hydrant symbol	HYDRANT	Hydrant symbol	Hydrant symbol	HYDRANT	Hydrant symbol
Valve symbol	VALVE	Valve symbol	Valve symbol	VALVE	Valve symbol
300 LDS	LAND DRAINAGE SEWER	300 LDS	300 LDS	LAND DRAINAGE SEWER	300 LDS
250 WWS	WASTE WATER SEWER	250 WWS	250 WWS	WASTE WATER SEWER	250 WWS
Manhole symbol	MANHOLE	Manhole symbol	Manhole symbol	MANHOLE	Manhole symbol
Catch basin symbol	CATCH BASIN	Catch basin symbol	Catch basin symbol	CATCH BASIN	Catch basin symbol
Curb inlet symbol	CURB INLET	Curb inlet symbol	Curb inlet symbol	CURB INLET	Curb inlet symbol
Culvert symbol	CULVERT	Culvert symbol	Culvert symbol	CULVERT	Culvert symbol
Pipe abandonment symbol	PIPE ABANDONMENTS	Pipe abandonment symbol	Pipe abandonment symbol	PIPE ABANDONMENTS	Pipe abandonment symbol
Survey bar symbol	SURVEY BAR	Survey bar symbol	Survey bar symbol	SURVEY BAR	Survey bar symbol
Existing symbol	EXISTING	Existing symbol	Existing symbol	EXISTING	Existing symbol
Legend - Plan	LEGEND - PLAN	Legend - Plan	Legend - Profile	LEGEND - PROFILE	Legend - Profile

LOCATION APPROVED
 UNDERGROUND STRUCTURES
 SUPR. U/G STRUCTURES DATE COMMITTEE
 NOTE: LOCATION OF UNDERGROUND STRUCTURES AS SHOWN ARE BASED ON THE BEST INFORMATION AVAILABLE. BUT NO GUARANTEE IS GIVEN THAT ALL EXISTING UTILITIES ARE SHOWN OR THAT THE GIVEN LOCATIONS ARE EXACT. CONFIRMATION OF EXISTENCE AND EXACT LOCATION OF ALL SERVICES MUST BE OBTAINED FROM THE INDIVIDUAL UTILITIES BEFORE PROCEEDING WITH CONSTRUCTION.

BM 13-009	N.E. Cor. Jefferson Ave. & Main St., Tblt. in S. Conc. foundation of Lift Station, 0.5m W. & 0.1m below brick of S.E. Cor. of Bldg.
ELEV 230.692m	
NO. REVISIONS	DATE
0	12/11/13 ADL

AECOM
 Certificate of Authorization
 AECOM Canada Ltd.
 No. 4671 Date: Nov 13, 2012

DESIGNED BY: FMI
 CHECKED BY: EDT
 DRAWN BY: ADL
 APPROVED BY: [Signature]
 HOR. SCALE: 1:250
 VERT. SCALE: 1:50
 RELEASSED FOR CONSTRUCTION: [Signature]
 DATE: Nov 13, 2012

PROFESSIONAL'S SEAL
 PROVINCE OF MANITOBA
 REGISTERED PROFESSIONAL ENGINEER
 G. M. TOUPIN
 Member 23484
 Nov 13, 2012
 CONSULTANT DRAWING NO. 60219315-SHT-30-Ph02 C-0003

THE CITY OF WINNIPEG
 WATER AND WASTE DEPARTMENT

JEFFERSON EAST
 COMBINED SEWER RELIEF
 CONTRACT 2
 JEFFERSON AVENUE
 190m EAST OF JONES STREET TO SCOTIA STREET

SHEET 03 OF 19
 CITY DRAWING NUMBER 10438
 REV 0

BID OPPORTUNITY NO. 863-2012