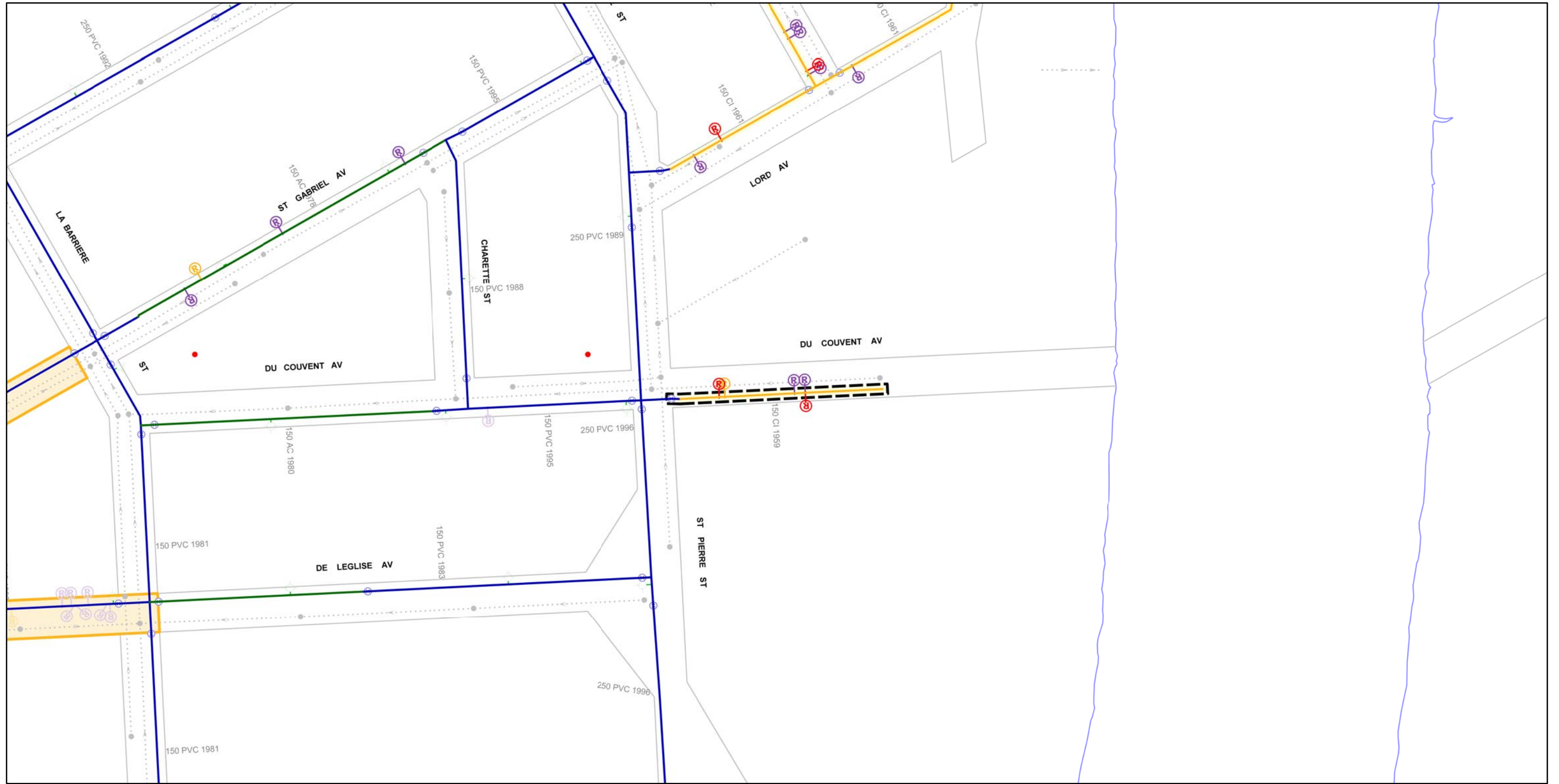


APPENDIX B – WATERMAIN RENEWAL LOCATIONS SKETCHES

Sketches for Du Couvent Av, St. Mary's Rd (Worthington to Marlbo),Rue Des Meurons (Hamel to Bertrand), St. Annes Rd (Clayton Dr. to Fermor Ave.) St. Mary's Rd (North of Consiton to Caton St.)Government Ave.,



CI WM	REPAIRS: <5 YRS	REPAIRS: >15 YRS - ABANDON	FROZEN SERVICES	2013 PWD PROJECT - LOCAL STREET
PVC WM	REPAIRS: <5 YRS - ABANDON	HYDRANT	MANHOLE	2013 PWD PROJECT - REGIONAL
AC WM	REPAIRS: 5 - 15 YRS	HYDRANT BRANCH	SEWER	2014 PWD PROJECT - REGIONAL
UNKNOWN WM MATERIAL	REPAIRS: 5 - 15 YRS - ABANDON	AQUEDUCT	2013 WMR PROJECTS	CATHODIC PROTECTION
VALVES	REPAIRS: >15 YRS	FEEDERMAIN	HISTORICAL PROJECTS	FIRE PROTECTION UPGRADE

Additional Notes:

FROZEN SERVICE
150 ok. Hydrant required at termination of dead end



Printed: 10/19/2012



**CITY OF WINNIPEG
WATER AND WASTE DEPARTMENT
2013 WATERMAIN RENEWAL PROGRAM**

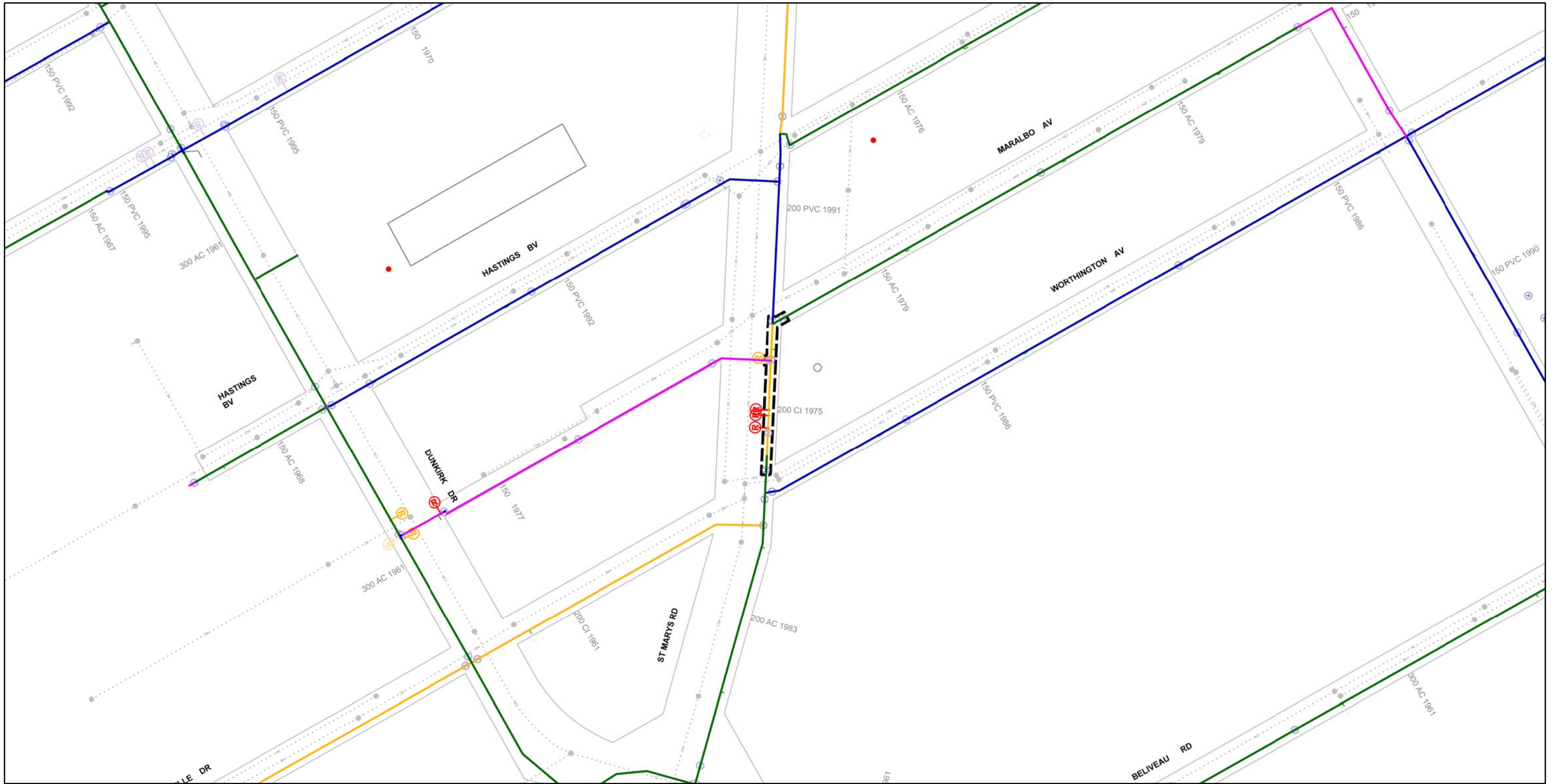
Location ID: 7

Street: DU COUVENT AV

Location Description: ST PIERRE ST EAST

Scale: 1:2000

Renewal Type: REPAIR COUNT



CI WM	REPAIRS: <5 YRS	REPAIRS: >15 YRS - ABANDON	FROZEN SERVICES	2013 PWD PROJECT - LOCAL STREET
PVC WM	REPAIRS: <5 YRS - ABANDON	HYDRANT	MANHOLE	2013 PWD PROJECT - REGIONAL
AC WM	REPAIRS: 5 - 15 YRS	HYDRANT BRANCH	SEWER	2014 PWD PROJECT - REGIONAL
UNKNOWN WM MATERIAL	REPAIRS: 5 - 15 YRS - ABANDON	AQUEDUCT	2013 WMR PROJECTS	CATHODIC PROTECTION
VALVES	REPAIRS: >15 YRS	FEEDERMAIN	HISTORICAL PROJECTS	FIRE PROTECTION UPGRADE

Additional Notes:

Existing sizes ok.

Printed: 10/19/2012



**CITY OF WINNIPEG
WATER AND WASTE DEPARTMENT
2013 WATERMAIN RENEWAL PROGRAM**

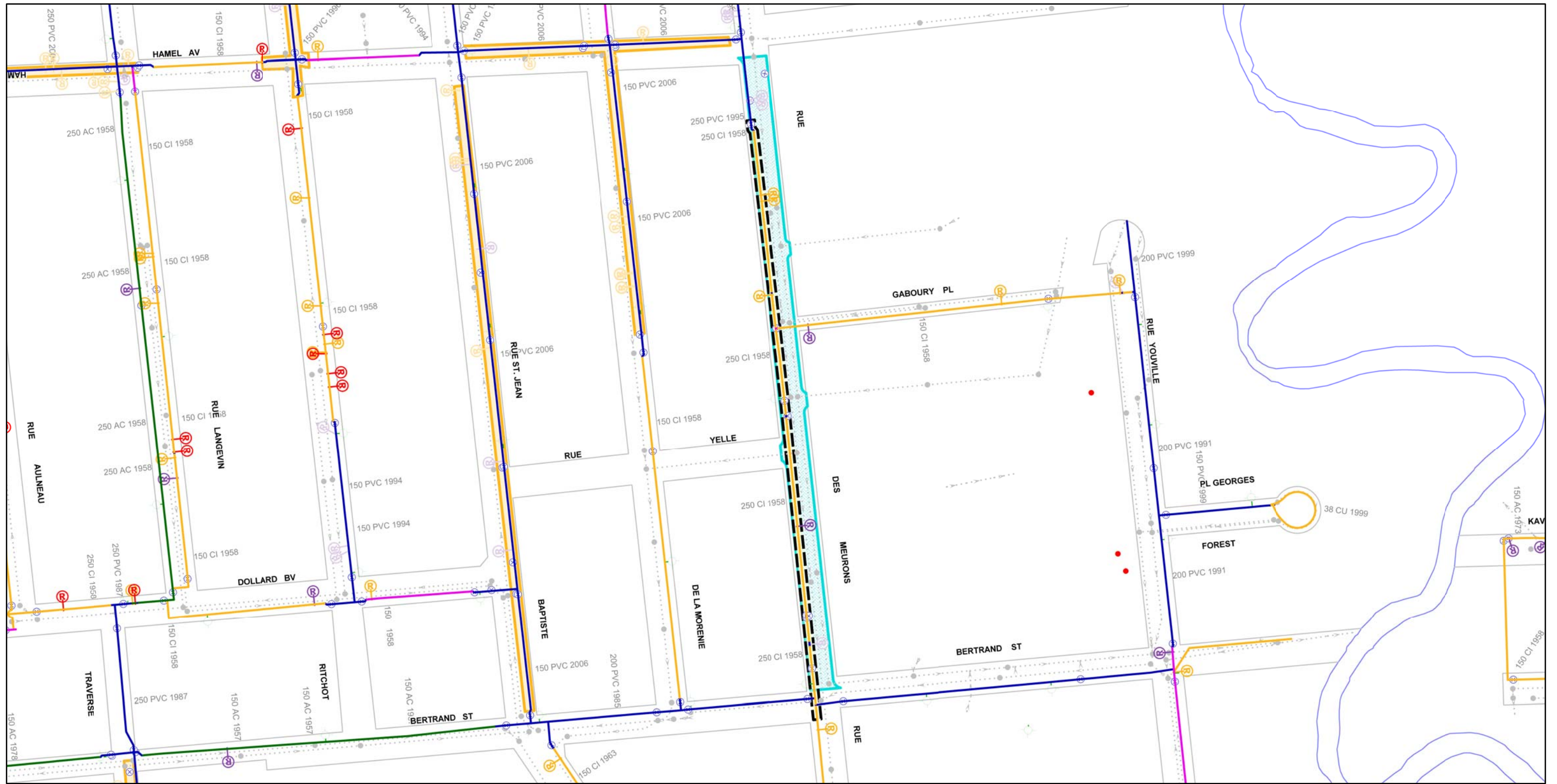
Location ID: 28

Street: ST MARY'S RD

Location Description: WORTHINGTON AV TO MARALBO AV

Scale: 1:2000

Renewal Type: LEAK FREQUENCY



— CI WM	Ⓡ REPAIRS: <5 YRS	Ⓡ REPAIRS: >15 YRS - ABANDON	● FROZEN SERVICES	▨ 2013 PWD PROJECT - LOCAL STREET
— PVC WM	Ⓡ REPAIRS: <5 YRS - ABANDON	Ⓡ HYDRANT	● MANHOLE	▨ 2013 PWD PROJECT - REGIONAL
— AC WM	Ⓡ REPAIRS: 5 - 15 YRS	— HYDRANT BRANCH	— SEWER	▨ 2014 PWD PROJECT - REGIONAL
— UNKNOWN WM MATERIAL	Ⓡ REPAIRS: 5 - 15 YRS - ABANDON	— AQUEDUCT	▨ 2013 WMR PROJECTS	▨ CATHODIC PROTECTION
⊗ VALVES	Ⓡ REPAIRS: >15 YRS	— FEEDERMAIN	▨ HISTORICAL PROJECTS	▨ FIRE PROTECTION UPGRADE

Additional Notes:

250 ok. Hyd spacing to be improved.

Printed: 10/19/2012



**CITY OF WINNIPEG
WATER AND WASTE DEPARTMENT
2013 WATERMAIN RENEWAL PROGRAM**

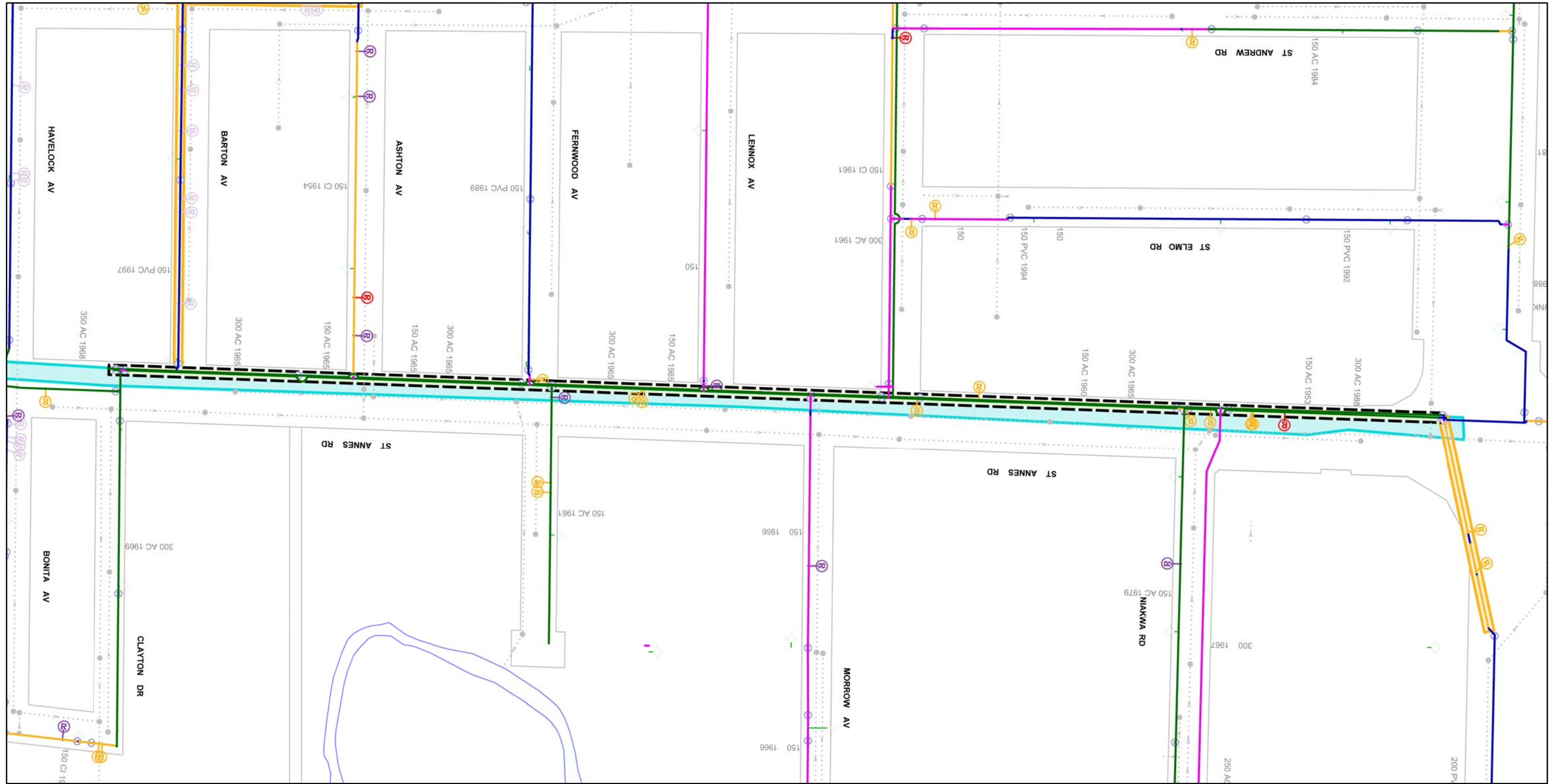
Location ID: 38

Street: RUE DES MEURONS

Location Description: HAMEL AV TO BERTRAND ST

Scale: 1:2000

Renewal Type: PWD-LOCAL



CI WM	REPAIRS: <5 YRS	REPAIRS: >15 YRS - ABANDON	FROZEN SERVICES	2013 PWD PROJECT - LOCAL STREET
PVC WM	REPAIRS: <5 YRS - ABANDON	HYDRANT	MANHOLE	2013 PWD PROJECT - REGIONAL
AC WM	REPAIRS: 5 - 15 YRS	HYDRANT BRANCH	SEWER	2014 PWD PROJECT - REGIONAL
UNKNOWN WM MATERIAL	REPAIRS: 5 - 15 YRS - ABANDON	AQUEDUCT	2013 WMR PROJECTS	CATHODIC PROTECTION
VALVES	REPAIRS: >15 YRS	FEEDERMAIN	HISTORICAL PROJECTS	FIRE PROTECTION UPGRADE

Additional Notes:

ABANDON DUAL INFRASTRUCTURE IN COORDINATION WITH PWD REGIONAL WORK

Connections required at Niakwa, Hull, Morrow, Lennox, Fernwood (2), Ashton

Printed: 10/19/2012



**CITY OF WINNIPEG
WATER AND WASTE DEPARTMENT
2013 WATERMAIN RENEWAL PROGRAM**

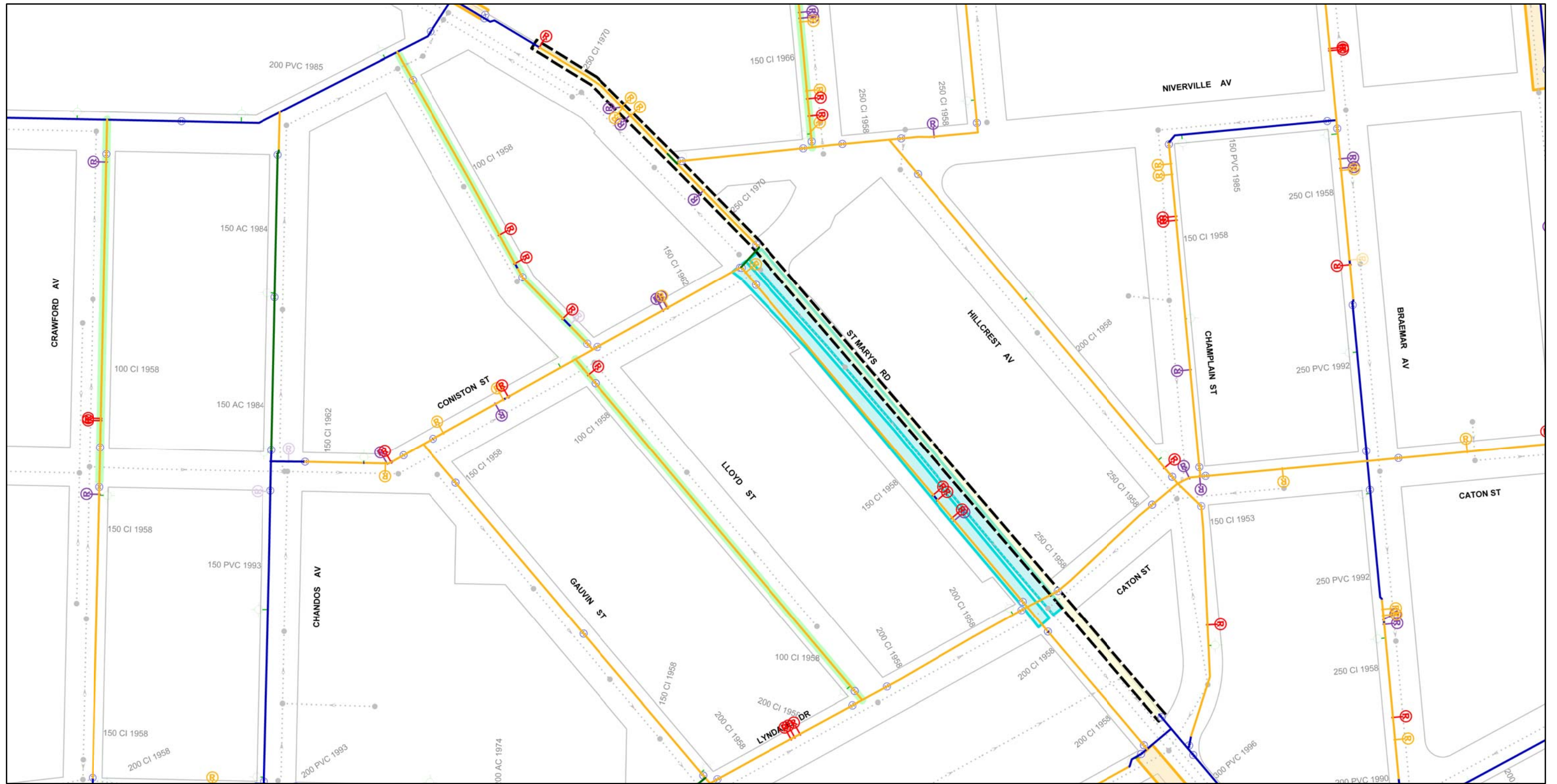
Location ID: 41

Street: ST ANNES RD

Location Description: FERMOR AV TO CLAYTON DR

Scale: 1:2000

Renewal Type: PWD-REGIONAL



CI WM	REPAIRS: <5 YRS	REPAIRS: >15 YRS - ABANDON	FROZEN SERVICES	2013 PWD PROJECT - LOCAL STREET
PVC WM	REPAIRS: <5 YRS - ABANDON	HYDRANT	MANHOLE	2013 PWD PROJECT - REGIONAL
AC WM	REPAIRS: 5 - 15 YRS	HYDRANT BRANCH	SEWER	2014 PWD PROJECT - REGIONAL
UNKNOWN WM MATERIAL	REPAIRS: 5 - 15 YRS - ABANDON	AQUEDUCT	2013 WMR PROJECTS	CATHODIC PROTECTION
VALVES	REPAIRS: >15 YRS	FEEDERMAIN	HISTORICAL PROJECTS	FIRE PROTECTION UPGRADE


Additional Notes:

ABANDONMENT IN COORDINATION WITH WMR AND PWD REGIONAL WORK

Upsize to 300 from Metcalfe to Caton, the rest to 250. Additional hydrants required for spacing. Niverville to be 250.

Printed: 10/19/2012





**CITY OF WINNIPEG
WATER AND WASTE DEPARTMENT
2013 WATERMAIN RENEWAL PROGRAM**

Location ID: 42	Street: ST MARY'S RD
Location Description: METCALF AV TO MID BLOCK N OF CONISTON ST	
Scale: 1:2000	Renewal Type: PWD-REGIONAL AND ABANDON