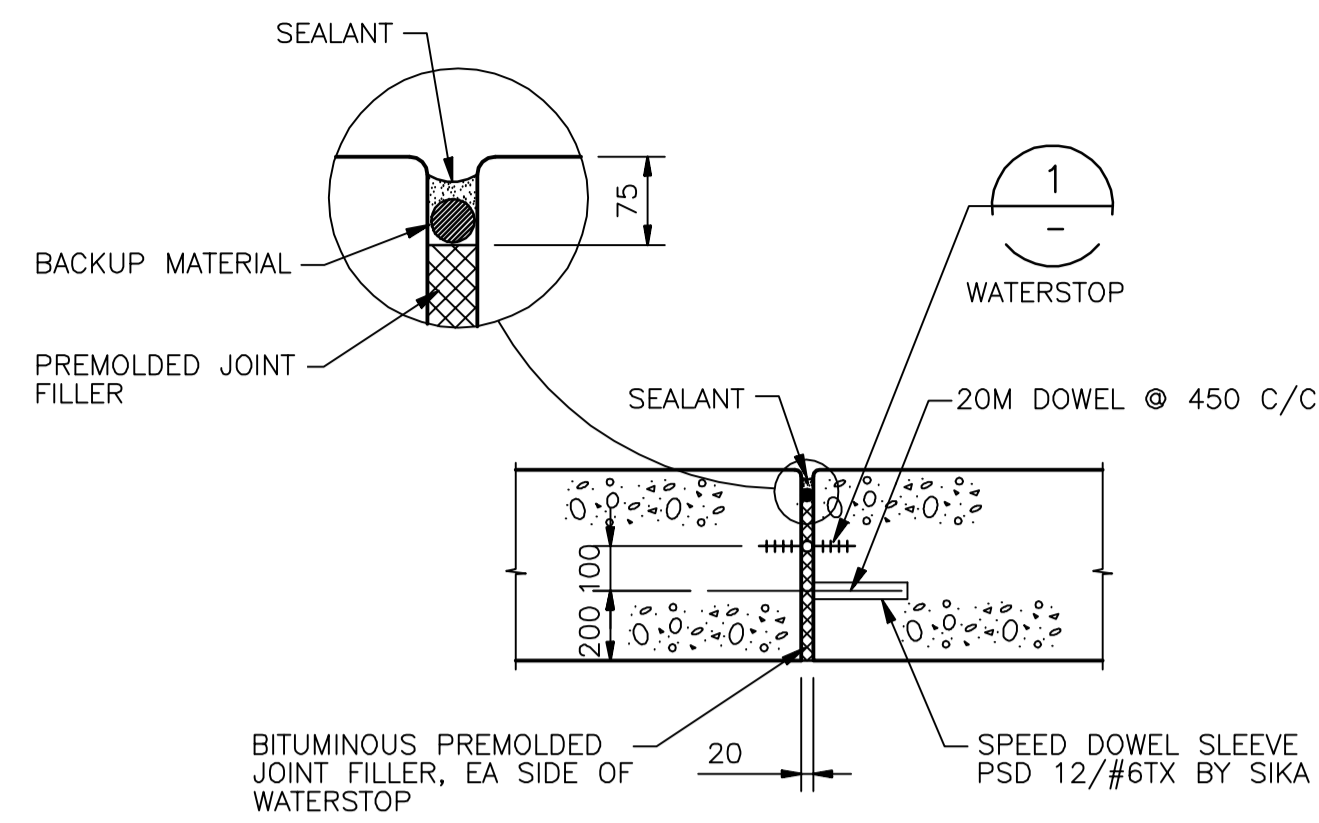


SIZE	"A"	"B"	"C"	"D"	"E"	"F"
150mmx10mm	150mm	10mm	10mm	22mm	6mm	6
225mmx10mm	225mm	10mm	10mm	25mm	6mm	8

NOTES:

- NON-ROUND CENTER BULBS SHALL HAVE A MINIMUM OUTSIDE DIMENSION OF 'D'.
- BULB TYPE WATERSTOP SHOWN IS REQUIRED FOR EXPANSION JOINTS
- USE 150mm WATERSTOPS IN ALL CONSTRUCTION JOINTS UNLESS SPECIFICALLY SHOWN OTHERWISE.

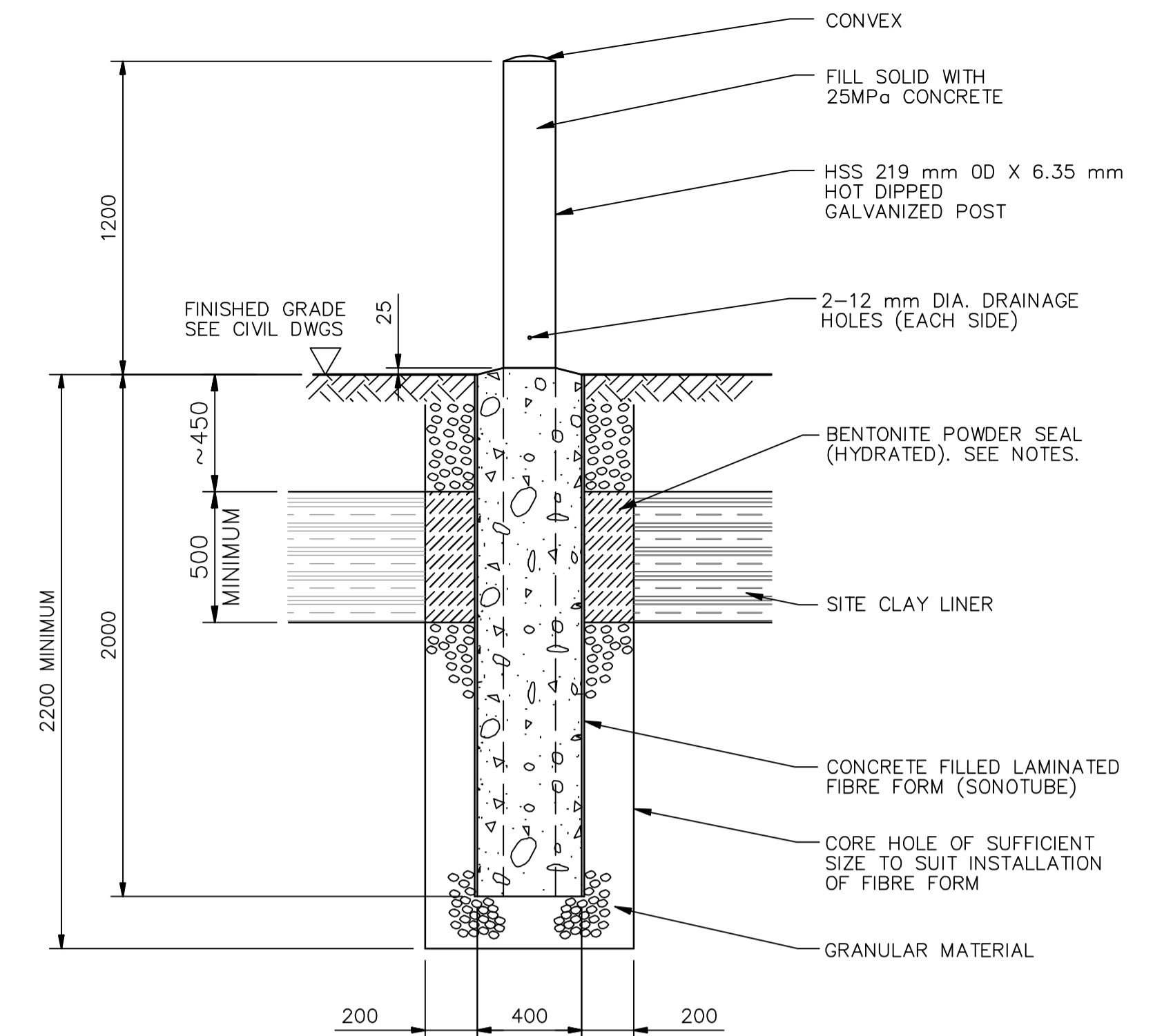
1 PLASTIC WATERSTOP
NTS



NOTES:

- ATTACH PREMOLDED JOINT FILLER WITH 65mm GALVANIZED NAILS @ 300mm SPACING EMBEDDED IN FIRST SLAB POUR.

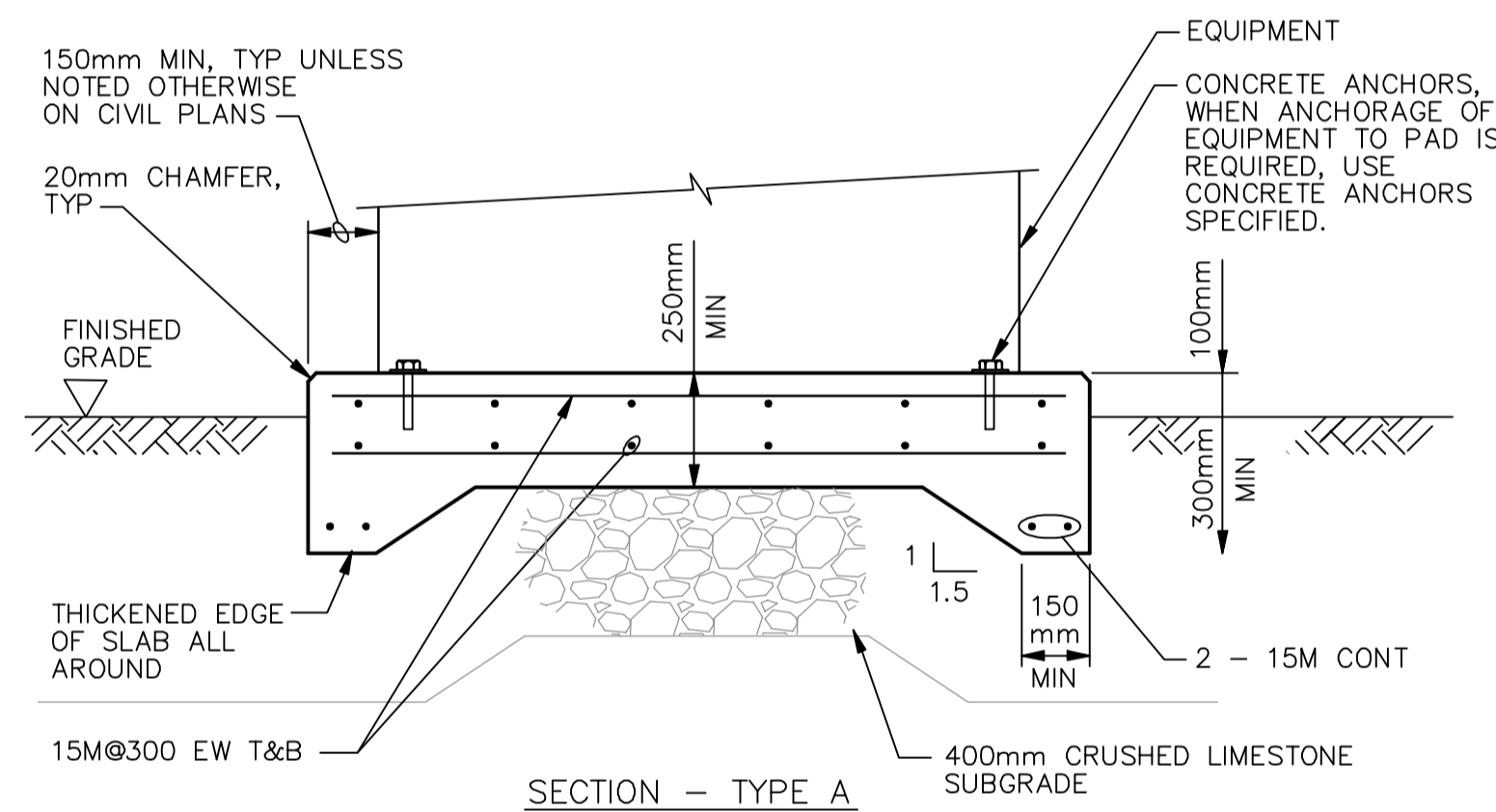
2 SLAB EXPANSION JOINT TREATMENT (EXP JT)
NTS



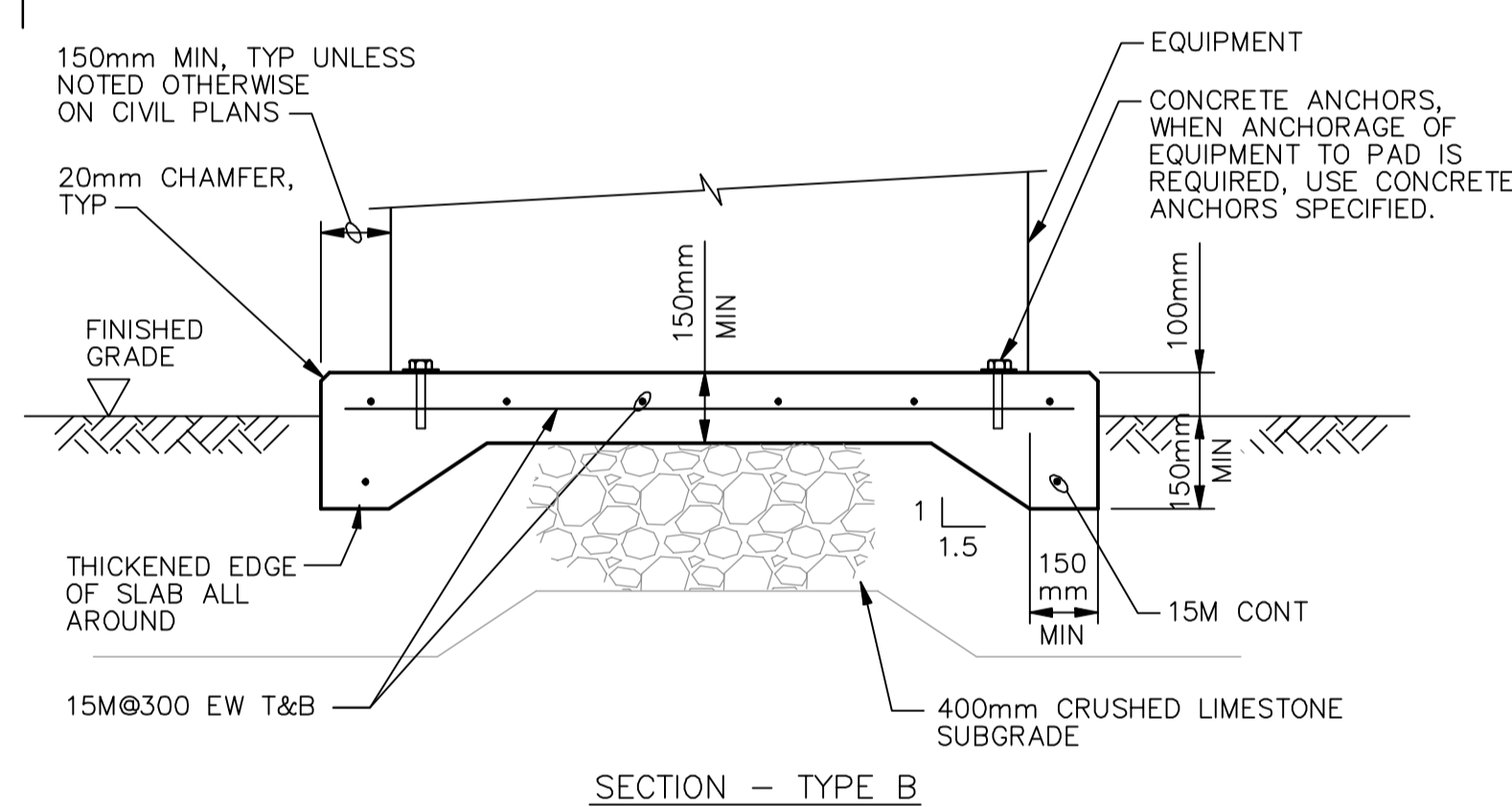
NOTES:

- BENTONITE POWDER SEAL TO BE LOCATED AT THE SAME ELEVATION AS THE CLAY LINER. DEPTH, THICKNESS AND ELEVATIONS SHOWN ARE APPROXIMATE.

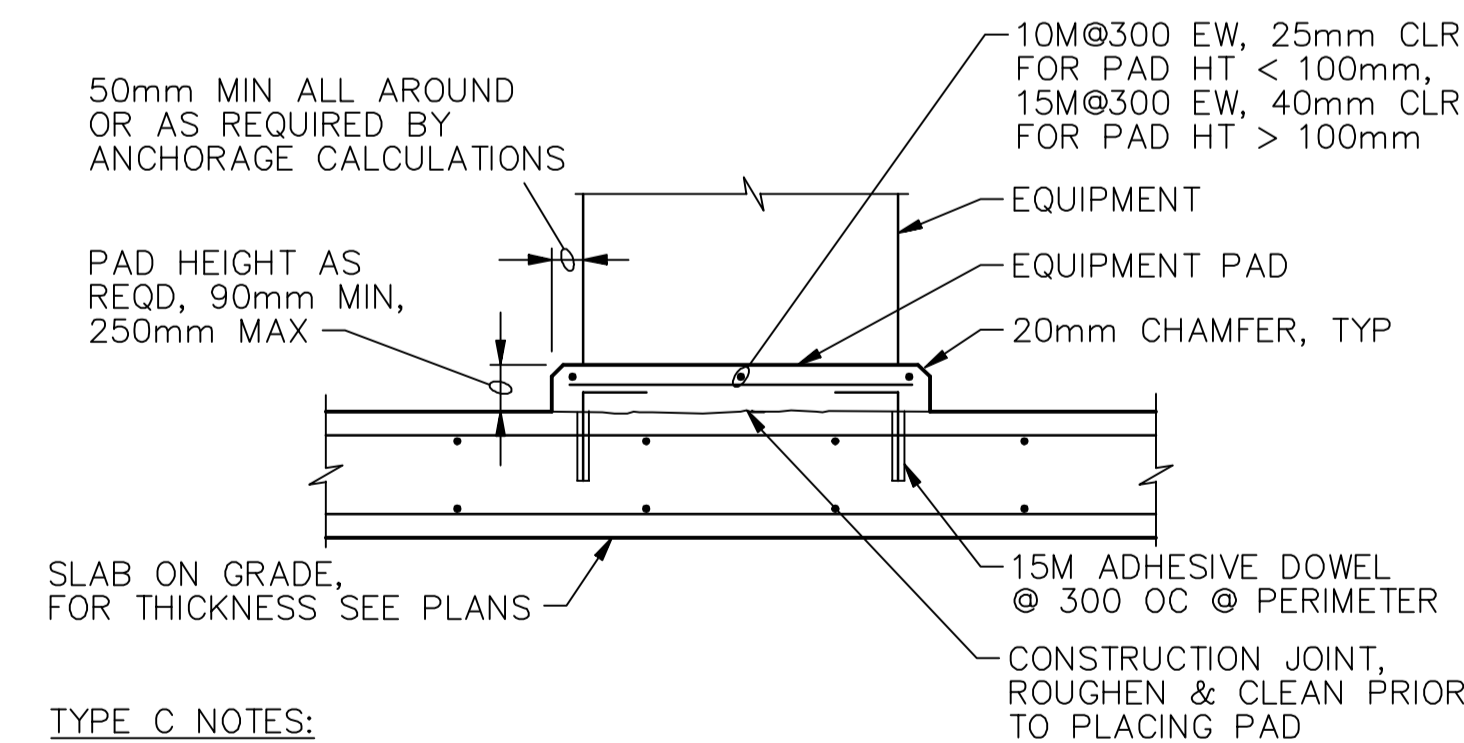
3 BOLLARD SET IN GROUND
NTS



SECTION - TYPE A



SECTION - TYPE B



SECTION - TYPE C

TYPE C NOTES:

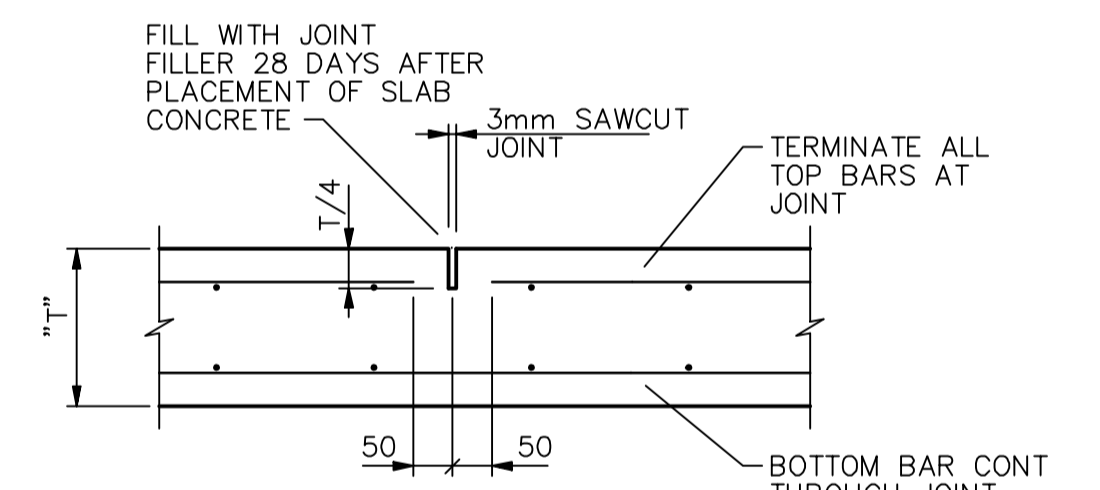
- WHEN ANCHORAGE OF EQUIPMENT TO PAD IS REQUIRED, USE CONCRETE ANCHORS SPECIFIED.
- CONCRETE PADS FOR ELECTRICAL EQUIPMENT SHALL BE 90mm HIGH, UNLESS NOTED OTHERWISE.

PAD GENERAL NOTES:

- PAD SIZE SHALL BE MINIMUM INDICATED OR AS SHOWN ON DRAWING S-231 OR AS INDICATED BY THE MANUFACTURER AND APPROVED BY THE CONTRACT ADMINISTRATOR.
- THE SIZE, NUMBER, TYPE, LOCATION, AND THREAD PROJECTION OF THE ANCHOR BOLTS SHALL BE DETERMINED BY THE EQUIPMENT MANUFACTURER AND AS APPROVED BY THE CONTRACT ADMINISTRATOR. ANCHOR BOLTS SHALL BE HELD IN POSITION WITH A TEMPLATE OR OTHER ACCEPTABLE MEANS, MATCHING THE BASE PLATE, WHILE PAD IS BEING PLACED.
- ANCHOR BOLT SLEEVES SHALL BE USED TO PROVIDE MINIMUM ANCHOR BOLT MOVEMENT OF 13mm IN ALL HORIZONTAL DIRECTIONS. THE MINIMUM SLEEVE LENGTH SHALL BE 8 TIMES THE BOLT DIAMETER.
- ANCHOR BOLT SLEEVES SHALL HAVE A MINIMUM INTERNAL DIAMETER 25mm GREATER THAN BOLT DIAMETER AND A MAXIMUM INTERNAL DIAMETER 75mm GREATER THAN ANCHOR BOLT DIAMETER. SLEEVES SHALL BE FILLED WITH NON-SHRINK GROUT AFTER BOLTS ARE ALIGNED.
- EQUIPMENT BASES SHALL BE INSTALLED LEVEL UNLESS INDICATED OTHERWISE.
- WEDGES, SHIMS, OR LEVELING NUTS SHALL BE USED TO SUPPORT THE BASE WHILE THE NON-SHRINK GROUT IS PLACED. WEDGES OR SHIMS THAT ARE LEFT IN PLACE SHALL NOT BE EXPOSED TO VIEW.
- HEIGHT OF PADS SHALL BE MINIMUM REQUIRED FOR ANCHOR BOLT CLEARANCE TO KEEP ANCHOR BOLT ABOVE SUPPORTING SLAB (SEE TABLE BELOW).
- AT CONTRACTOR'S OPTION, CONCRETE ANCHORS MAY BE USED IN LIEU OF CAST-IN-PLACE ANCHOR BOLTS FOR EQUIPMENT ANCHOR BOLTS LESS THAN 20mm DIAMETER WHEN APPROVED BY THE EQUIPMENT MANUFACTURER AND APPROVED BY THE CONTRACT ADMINISTRATOR. ANCHORS SHALL BE INSTALLED WITH 100mm MINIMUM EDGE DISTANCE IN EACH DIRECTION.

AB DIA (mm)	12	16	20	22	25	33	35	38	44	50
MIN PAD HT (mm)	250	250	250	275	320	380	420	450	535	600

4 CONCRETE EQUIPMENT PAD AND NOTES
NTS



DOUBLE REINFORCING MAT

NOTE:

- CONTRACTOR SHALL USE STRING LINE OR OTHER POSITIVE MEANS TO PLACE REINFORCING AND LOCATE SAWCUT.

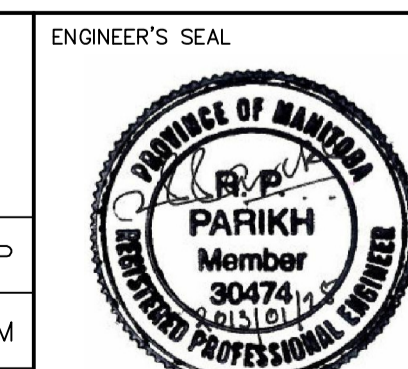
5 BUILDING SLAB ON GRADE SAWN CONTROL JOINT (SCJ)
NTS



B.M. ELEV.			
CONSTRUCTION COMPLETION DATE: YYYY MM DD			
NO.	REVISIONS	DATE	BY
0	ISSUED FOR CONSTRUCTION	13/01/25	JK



DESIGNED BY	KS	CHECKED BY	RP
DRAWN BY	JK	APPROVED BY	BM
SCALE:	AS SHOWN		
HORIZONTAL	AS SHOWN		
VERTICAL	AS SHOWN		
DATE	2013 01 25	RELEASED FOR CONSTRUCTION	DATE



CONSULTANT DRAWING NUMBER
S-501

THE CITY OF WINNIPEG
WATER AND WASTE DEPARTMENT
ENGINEERING DIVISION

BRADY ROAD RESOURCE MANAGEMENT FACILITY
LEAF AND YARD WASTE AND
PILOT BIOSOLIDS COMPOSTING

STRUCTURAL
STANDARD DETAILS SHEET 1 OF 2

SHEET 24 OF 45

CITY DRAWING NUMBER

1-0400B-S0009-001-00