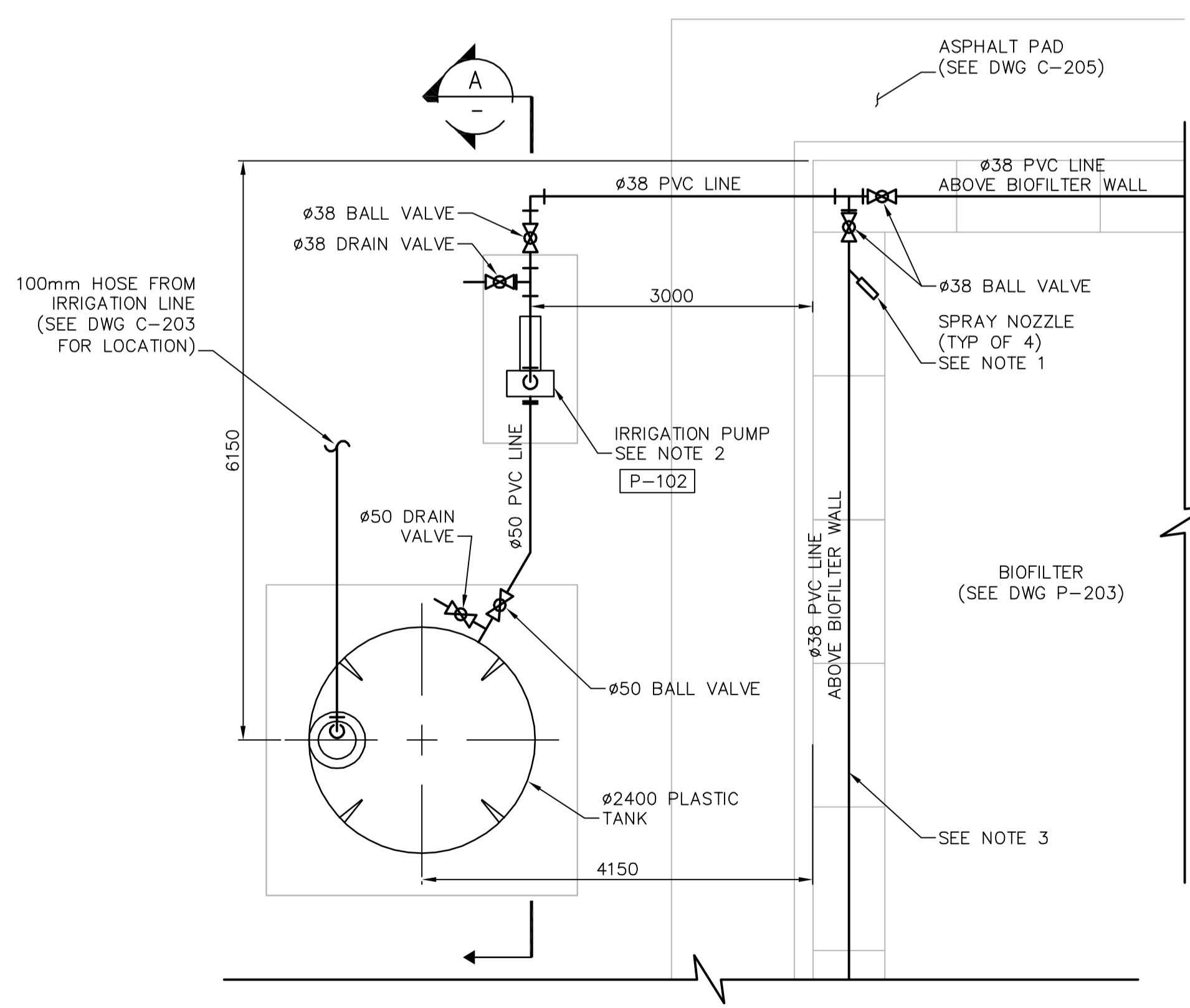
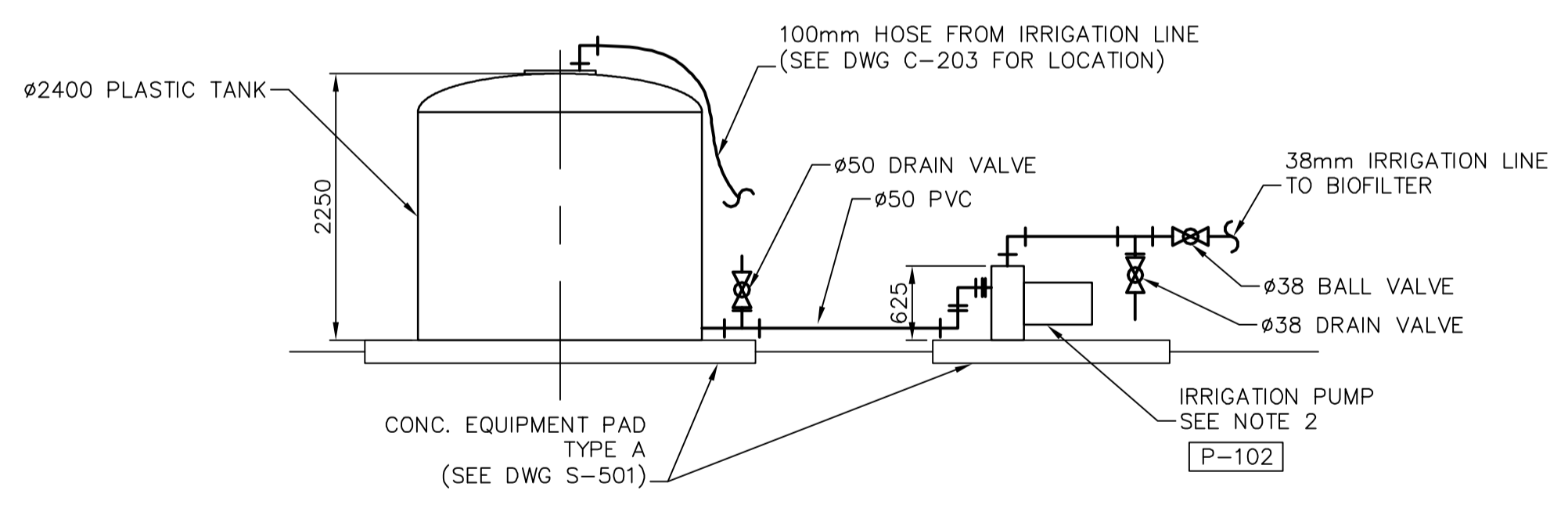


1 OVERALL FACILITIES PLAN
1:200



- NOTES:
1. SPRAY NOZZLES 1-4, 16000 RADIUS. RAINBIRD MODEL F4-PC-SS-NP-12.
 2. MODULAR PUMP STATION. RAINBIRD MODEL LC 2000.
 3. ANCHOR PVC PIPE AND NOZZLES WITH S.S. HARDWARE.

2 IRRIGATION PLAN
1:50



A IRRIGATION SECTION
1:50



B.M. ELEV.			
CONSTRUCTION COMPLETION DATE: YYYY MM DD			
DESIGNED BY	TW	CHECKED BY	SG
DRAWN BY	JBC	APPROVED BY	BM
SCALE: HORIZONTAL VERTICAL	AS SHOWN -	RELEASED FOR CONSTRUCTION	
ISSUED FOR CONSTRUCTION	13/01/25	JBC	
NO. REVISIONS	DATE	BY	
0			
DATE	2013 01 25		
PLOT DATE:	2013 02 04		

CH2MHILL

ENGINEER'S SEAL

PROVINCE OF MANITOBA
S.E. [Signature]
REGISTERED PROFESSIONAL ENGINEER

CONSULTANT DRAWING NUMBER
P-201

THE CITY OF WINNIPEG
WATER AND WASTE DEPARTMENT
ENGINEERING DIVISION

Winnipeg

BRADY ROAD RESOURCE MANAGEMENT FACILITY
LEAF AND YARD WASTE AND
PILOT BIOSOLIDS COMPOSTING
PROCESS - OVERALL PLAN

SHEET 29 OF 45
CITY DRAWING NUMBER
1-0400B-P0001-001-00