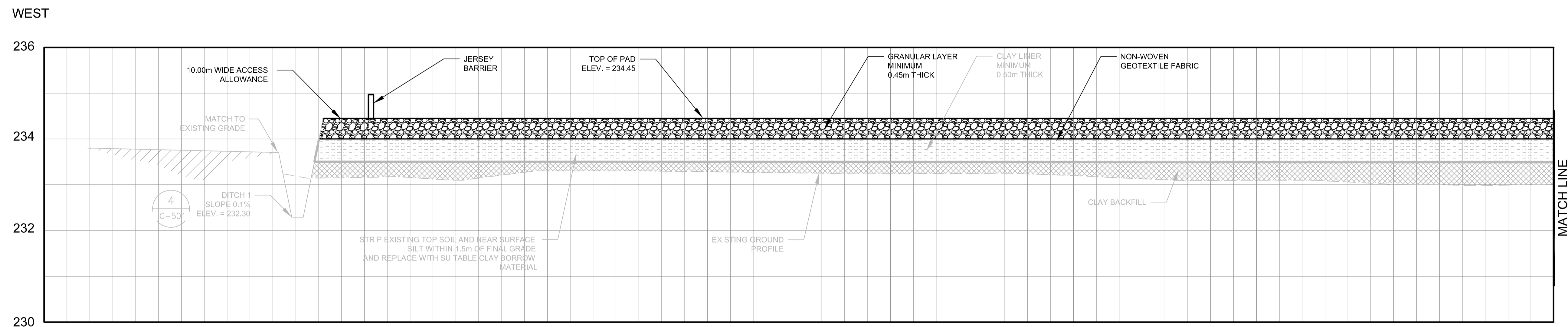
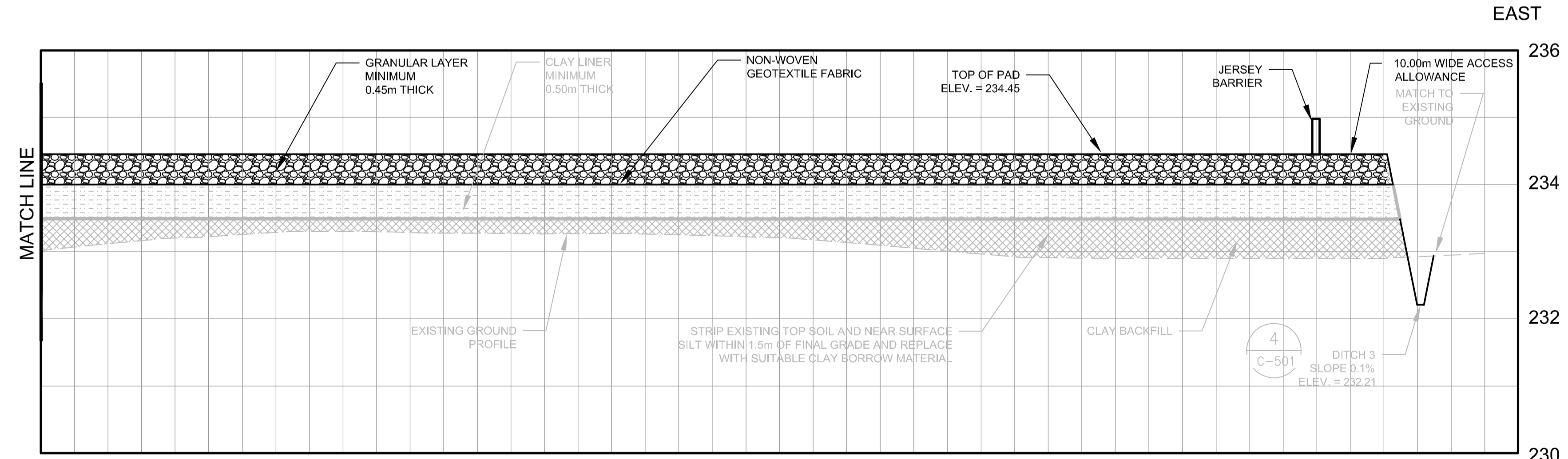


- NOTES:
1. CLAY LINER TO BE CONSTRUCTED IN ACCORDANCE WITH SPECIFICATION SECTION 02260.
 2. GRANULAR LAYER TO BE CRUSHED LIMESTONE AND CONSTRUCTED IN ACCORDANCE WITH SPECIFICATION SECTION CW 3110.
 3. GEOTEXTILE TO BE INSTALLED IN ACCORDANCE WITH SPECIFICATION SECTION CW 3130.
 4. TOPSOIL STRIPPING, SUBGRADE FILL AND CLAY LINER PLACEMENT AND COMPACTION BY OTHERS.

A SECTION
C-202 H: 1:500 V: 1:50



B SECTION
C-202 H: 1:500 V: 1:50



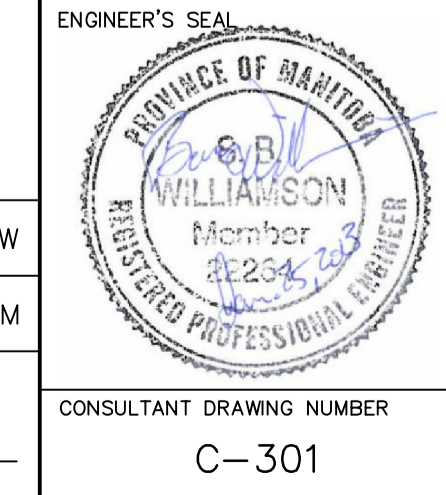
SECTION B (CONT'D)
H: 1:500 V: 1:50

APEGM
Certificate of Authorization
CH2M HILL Canada Ltd.
No. 1441 Date: January 25, 2013

B.M. ELEV.			
CONSTRUCTION COMPLETION DATE: YYYY MM DD			
NO.	ISSUED FOR CONSTRUCTION	DATE	BY
0	ISSUED FOR CONSTRUCTION	13/01/25	GMH
	REVISIONS	DATE	BY

CH2MHILL

DESIGNED BY	BW	CHECKED BY	BW
DRAWN BY	GH	APPROVED BY	BM
SCALE:		RELEASED FOR CONSTRUCTION	
HORIZONTAL	1:500	DATE	2013 01 25
VERTICAL	1:50	DATE	



THE CITY OF WINNIPEG
WATER AND WASTE DEPARTMENT
ENGINEERING DIVISION

Winnipeg

BRADY ROAD RESOURCE MANAGEMENT FACILITY
LEAF AND YARD WASTE AND
PILOT BIOSOLIDS COMPOSTING
CIVIL
L&YW PAD CROSS SECTIONS SHEET 1 OF 2

SHEET 10 OF 45
CITY DRAWING NUMBER
1-0400B-C0008-001-00

BID OPPORTUNITY: 839-2012

FILE PATH: C:\pwworkdir\ch2mhill_wbg\jortez1\d0198664\ C-301.dwg